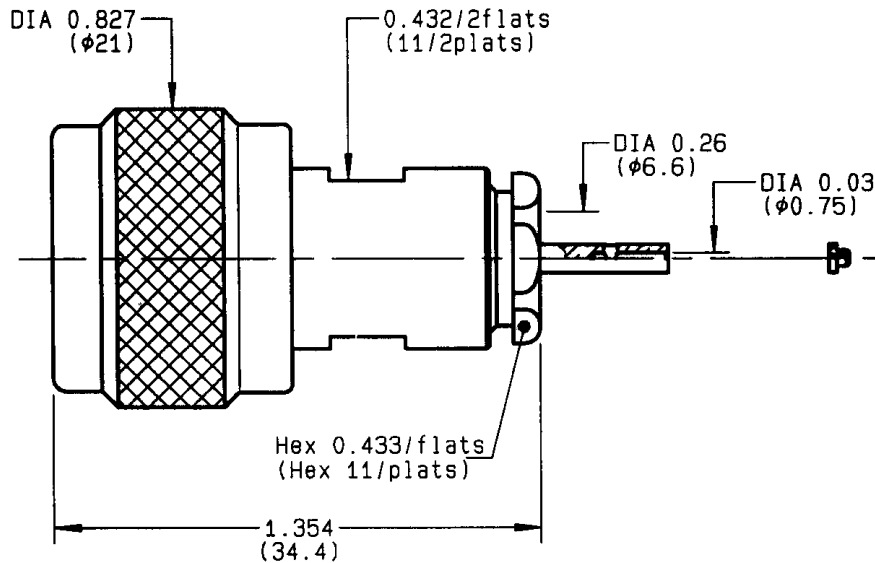


STRAIGHT PLUG CLAMP TYPE
CABLE 6/75+93

R162.012.000
SERIES N 75



| | |
|---------------------------------|----------------------------------|
| NOMINAL IMPEDANCE | 75 Ω |
| FREQUENCY RANGE | 0-1.5 GHz |
| TEMPERATURE RATING | -55/+155 °C |
| V.S.W.R | 1.06 + x F(GHz)Maxi |
| RF INSERTION LOSS | 0.15 √F(GHz) dB Maxi |
| VOLTAGE RATING | 850 Veff Maxi |
| DIELECTRIC WITHSTANDING VOLTAGE | 1500 Veff Mini |
| INSULATION RESISTANCE | 5000 M ΩMini |
| HERMETIC SEAL | NA Atm.cm ³ /s |
| LEAKAGE (pressurized only) | NA |
| MECHANICAL DURABILITY | 500 Cycles |
| WEIGHT | 31.8 gr |
| SPECIFICATION | |

CABLES : **KX 6A**
RG 59
RG 62

OTHERS CHARACTERISTICS

| | |
|----------------------------|---------------------|
| CABLE RETENTION | 200 N Mini |
| CENTER CONTACT RETENTION | |
| Axial force - mating end | NA N Mini |
| Axial force - opposite end | NA N Mini |
| Torque | NA cm.N Mini |
| RECOMMENDED TORQUES | |
| Mating | 130 cm.N |
| Panel nut | NA cm.N |
| Clamp nut | 450 cm.N |

| CONNECTOR PARTS | MATERIALS | FINISH | (all values are given in micrometers) |
|-----------------|-----------------|------------------------|---------------------------------------|
| BODY | BRASS | BBR 2 | |
| OUTER CONTACT | BRASS | BBR 2 | |
| CENTER CONTACT | BRASS | GOLD 0.5 OVER NICKEL 2 | |
| INSULATOR | PTFE | - | |
| GASKET | SILICONE RUBBER | - | |
| OTHERS PIECES | BRASS | BBR 2 | |

| | | |
|----------------|------------------|------------------|
| ISSUE | CREATION DATE | FILE PART-NUMBER |
| 9813J01 | 26-OCT-93 | EPC 96-07 |



BOND

The information given here is subject to change without notice. Design changes may be in order to improve the product.

Connect to the future

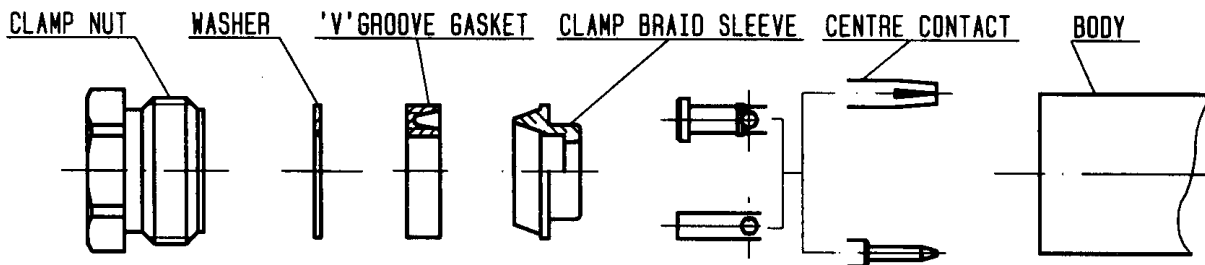


RADIALL®

R162.012.000

ISSUE 9813J01

SERIES N 75



①

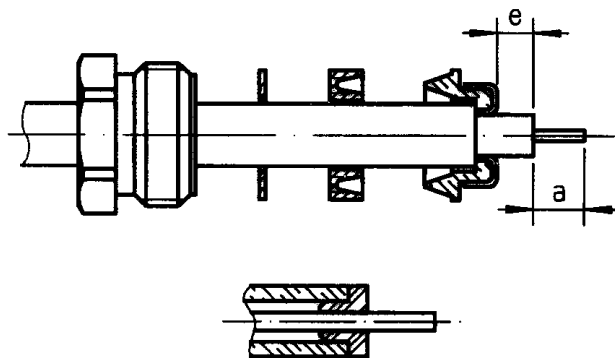
Strip the cable .



| Stripping | a | b | c | d | e |
|-----------|-------|-------|---|---|-------|
| inch | 0.157 | 0.315 | 0 | 0 | 0.079 |
| mm | 4 | 8 | | | 2 |

②

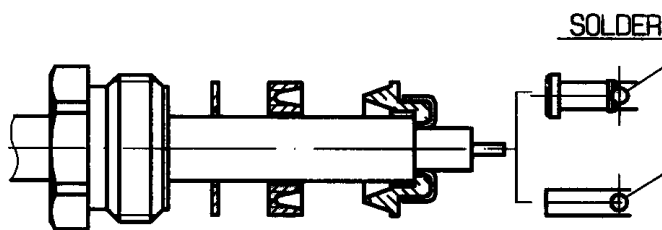
Slide the clamp nut , the washer and the 'V'groove gasket onto the cable .
 Slide clamp braid sleeve over braid .
 Fold back braid and trim off surplus braid .
 Trim back dielectric as shown .



NOTA:For air-space PE cables , "e" =0.039
 Introduce insulator onto dielectric cable .

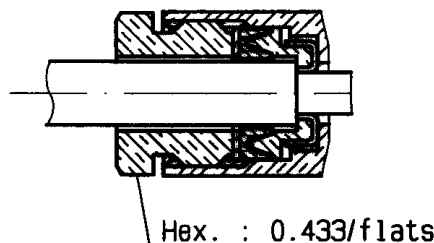
③

Solder the cable inner conductor into centre contact .



④

Screw sub-assembly into the connector body .
 (recommended coupling torque 39.82 in.lb)



Mouser Electronics

Authorized Distributor

Click to View Pricing, Inventory, Delivery & Lifecycle Information:

Radial:

[R162012000](#) [R162012000W](#)