

PLEASE CHECK WWW.MOLEX.COM FOR LATEST PART INFORMATION

Part Number: [0622018672](#)
Status: **Active**
Overview: [Application Tooling](#)
Description: Vertical Receptacle Press-In Tool

Documents:
[RoHS Certificate of Compliance \(PDF\)](#)

General

Product Family	Application Tooling
Series	207122
Comments	See Tooling Specification (PDF) Above, Press-In Tool
Function	Insertion
Geographic Area	Global
Level of Automation	Manual
More Detailed Tech Information	applicationtooling@molex.com
Overview	Application Tooling
Product Name	PremiumGrade
Tool Type	Press-Fit Insertion Tool
UPC	883906174828
Warranty Disclaimer	CAUTION: Molex tooling crimp specifications are valid only when used with Molex terminals and tooling manufactured by Molex and sold by Molex or authorized distributors ("Molex Tooling"). When using tooling other than Molex Tooling with Molex specific connector systems listed in our ATS documents, the Molex tooling qualification does not apply and the responsibility for full qualification of the connector system is that of the customer. Molex accepts no liability for connector performance or tooling support where tooling other than Molex Tooling is used or where Molex Tooling is modified.

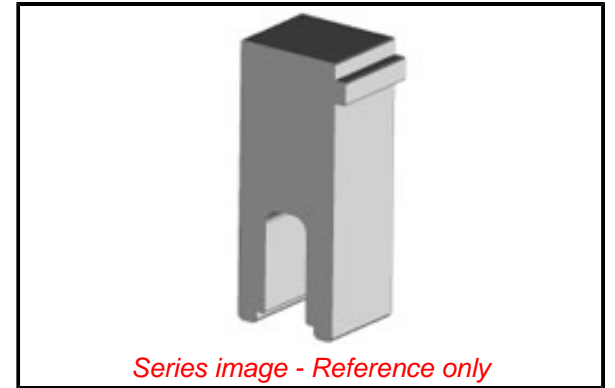
Physical

Net Weight 38.900/g

Material Info

Reference - Drawing Numbers

Application Tooling Documents [ATS-622018672-001](#)



EU ELV

Not Relevant

EU RoHS

Not Reviewed

REACH SVHC

Not Reviewed

Halogen-Free

Status

Not Relevant

For more information, please visit [Contact US](#)

China ROHS

Not Relevant

ELV

Not Relevant

RoHS Phthalates

Not Reviewed

Search Parts in this Series

[207122 Series](#)

Use With

LPH Vertical Receptacle [46114 Series](#)

Application Tooling | [FAQ](#)

Description	Product #
-------------	-----------

1.27mm, 12.00mm Pitch, EXTreme LPHPower Receptacle Header, Vertical, 10 Power Contacts, 12 Signal Contacts, Select Gold (Au) Plating, with BMI Guides	461141012
---	---------------------------

1.27mm, 12.00mm Pitch, EXTreme LPHPower Receptacle Header, Vertical, 10 Power Contacts, 12 Signal Contacts, Select Gold (Au) Plating, without BMI Guides	461141013
--	---------------------------

1.27mm, 12.00mm Pitch, EXTreme LPHPower Receptacle Header, Vertical, 10 Power Contacts, 16 Signal Contacts, Select Gold (Au) Plating, with BMI Guides	<u>461141016</u>
1.27mm, 12.00mm Pitch, EXTreme LPHPower Receptacle Header, Vertical, 10 Power Contacts, 16 Signal Contacts, Select Gold (Au) Plating, without BMI Guides	<u>461141017</u>
1.27mm, 12.00mm Pitch, EXTreme LPHPower Receptacle Header, Vertical, 10 Power Contacts, 32 Signal Contacts, Select Gold (Au) Plating, with BMI Guides	<u>461141032</u>
1.27mm, 12.00mm Pitch, EXTreme LPHPower Receptacle Header, Vertical, 10 Power Contacts, 32 Signal Contacts, Select Gold (Au) Plating, without BMI Guides	<u>461141033</u>
1.27mm, 12.00mm Pitch, EXTreme LPHPower Receptacle Header, Vertical, 10 Power Contacts, 36 Signal Contacts, Select Gold (Au) Plating, with BMI Guides	<u>461141036</u>
1.27mm, 12.00mm Pitch, EXTreme LPHPower Receptacle Header, Vertical, 10 Power Contacts, 36 Signal Contacts, Select Gold (Au) Plating, without BMI Guides	<u>461141037</u>
1.27mm, 12.00mm Pitch, EXTreme LPHPower Receptacle Header, Vertical, Compliant Pin, 12 Power Contacts, 12 Signal Contacts, Select Gold (Au) Plating, with BMI Guides	<u>461141212</u>

1.27mm, 12.00mm [461141213](#)
Pitch, EXTreme
LPHPower
Receptacle Header,
Vertical, Compliant
Pin, 12 Power
Contacts, 12 Signal
Contacts, Select
Gold (Au) Plating,
without BMI Guides

1.27mm, 12.00mm [461141216](#)
Pitch, EXTreme
LPHPower
Receptacle Header,
Vertical, Compliant
Pin, 12 Power
Contacts, 16 Signal
Contacts, Select
Gold (Au) Plating,
with BMI Guides

1.27mm, 12.00mm [461141217](#)
Pitch, EXTreme
LPHPower
Receptacle Header,
Vertical, Compliant
Pin, 12 Power
Contacts, 16 Signal
Contacts, Select
Gold (Au) Plating,
without BMI Guides

1.27mm, 12.00mm [461141232](#)
Pitch, EXTreme
LPHPower
Receptacle Header,
Vertical, Compliant
Pin, 12 Power
Contacts, 32 Signal
Contacts, Select
Gold (Au) Plating,
with BMI Guides

1.27mm, 12.00mm [461141233](#)
Pitch, EXTreme
LPHPower
Receptacle Header,
Vertical, Compliant
Pin, 12 Power
Contacts, 32 Signal
Contacts, Select
Gold (Au) Plating,
without BMI Guides

1.27mm, 12.00mm [461141236](#)
Pitch, EXTreme
LPHPower
Receptacle Header,
Vertical, Compliant
Pin, 12 Power
Contacts, 36 Signal
Contacts, Select
Gold (Au) Plating,
with BMI Guides

1.27mm, 12.00mm [461141237](#)
Pitch, EXTreme
LPHPower
Receptacle Header,
Vertical, Compliant

Pin, 12 Power
Contacts, 36 Signal
Contacts, Select
Gold (Au) Plating,
without BMI Guides
1.27mm, 12.00mm 461141412
Pitch, EXTreme
LPHPower
Receptacle Header,
Vertical, Compliant
Pin, 14 Power
Contacts, 12 Signal
Contacts, Select
Gold (Au) Plating,
with BMI Guides
1.27mm, 12.00mm 461141413
Pitch, EXTreme
LPHPower
Receptacle Header,
Vertical, Compliant
Pin, 14 Power
Contacts, 12 Signal
Contacts, Select
Gold (Au) Plating,
without BMI Guides
1.27mm, 12.00mm 461141416
Pitch, EXTreme
LPHPower
Receptacle Header,
Vertical, Compliant
Pin, 14 Power
Contacts, 16 Signal
Contacts, Select
Gold (Au) Plating,
with BMI Guides
1.27mm, 12.00mm 461141417
Pitch, EXTreme
LPHPower
Receptacle Header,
Vertical, Compliant
Pin, 14 Power
Contacts, 16 Signal
Contacts, Select
Gold (Au) Plating,
without BMI Guides
1.27mm, 12.00mm 461141432
Pitch, EXTreme
LPHPower
Receptacle Header,
Vertical, Compliant
Pin, 14 Power
Contacts, 32 Signal
Contacts, Select
Gold (Au) Plating,
with BMI Guides
1.27mm, 12.00mm 461141433
Pitch, EXTreme
LPHPower
Receptacle Header,
Vertical, Compliant
Pin, 14 Power
Contacts, 32 Signal
Contacts, Select
Gold (Au) Plating,
without BMI Guides

1.27mm, 12.00mm 461141436
Pitch, EXTreme
LPHPower
Receptacle Header,
Vertical, Compliant
Pin, 14 Power
Contacts, 36 Signal
Contacts, Select
Gold (Au) Plating,
with BMI Guides

1.27mm, 12.00mm 461141437
Pitch, EXTreme
LPHPower
Receptacle Header,
Vertical, Compliant
Pin, 14 Power
Contacts, 36 Signal
Contacts, Select
Gold (Au) Plating,
without BMI Guides

1.27mm, 12.00mm 461142120
Pitch, EXTreme
LPHPower
Receptacle Header,
Vertical, 2 Power
Contacts, 12 Signal
Contacts, Select
Gold (Au) Plating,
with BMI Guides

1.27mm, 12.00mm 461142121
Pitch, EXTreme
LPHPower
Receptacle Header,
Vertical, 2 Power
Contacts, 12 Signal
Contacts, Select
Gold (Au) Plating,
without BMI Guides

1.27mm, 12.00mm 461142160
Pitch, EXTreme
LPHPower
Receptacle Header,
Vertical, 2 Power
Contacts, 16 Signal
Contacts, Select
Gold (Au) Plating,
with BMI Guides

1.27mm, 12.00mm 461142161
Pitch, EXTreme
LPHPower
Receptacle Header,
Vertical, 2 Power
Contacts, 16 Signal
Contacts, Select
Gold (Au) Plating,
without BMI Guides

1.27mm, 12.00mm 461142320
Pitch, EXTreme
LPHPower
Receptacle Header,
Vertical, 2 Power
Contacts, 32 Signal
Contacts, Select
Gold (Au) Plating,
with BMI Guides

1.27mm, 12.00mm 461142321
Pitch, EXTreme
LPHPower
Receptacle Header,
Vertical, 2 Power
Contacts, 32 Signal
Contacts, Select
Gold (Au) Plating,
without BMI Guides

1.27mm, 12.00mm 461142360
Pitch, EXTreme
LPHPower
Receptacle Header,
Vertical, 2 Power
Contacts, 36 Signal
Contacts, Select
Gold (Au) Plating,
with BMI Guides

1.27mm, 12.00mm 461142361
Pitch, EXTreme
LPHPower
Receptacle Header,
Vertical, 2 Power
Contacts, 36 Signal
Contacts, Select
Gold (Au) Plating,
without BMI Guides

1.27mm, 12.00mm 461144120
Pitch, EXTreme
LPHPower
Receptacle Header,
Vertical, 4 Power
Contacts, 12 Signal
Contacts, Select
Gold (Au) Plating,
with BMI Guides

1.27mm, 12.00mm 461144121
Pitch, EXTreme
LPHPower
Receptacle Header,
Vertical, 4 Power
Contacts, 12 Signal
Contacts, Select
Gold (Au) Plating,
without BMI Guides

1.27mm, 12.00mm 461144160
Pitch, EXTreme
LPHPower
Receptacle Header,
Vertical, 4 Power
Contacts, 16 Signal
Contacts, Select
Gold (Au) Plating,
with BMI Guides

1.27mm, 12.00mm 461144161
Pitch, EXTreme
LPHPower
Receptacle Header,
Vertical, 4 Power
Contacts, 16 Signal
Contacts, Select
Gold (Au) Plating,
without BMI Guides

1.27mm, 12.00mm 461144320
Pitch, EXTreme

LPHPower
Receptacle Header,
Vertical, 4 Power
Contacts, 32 Signal
Contacts, Select
Gold (Au) Plating,
with BMI Guides
1.27mm, 12.00mm 461144321
Pitch, EXTreme

LPHPower
Receptacle Header,
Vertical, 4 Power
Contacts, 32 Signal
Contacts, Select
Gold (Au) Plating,
without BMI Guides
1.27mm, 12.00mm 461144360
Pitch, EXTreme

LPHPower
Receptacle Header,
Vertical, 4 Power
Contacts, 36 Signal
Contacts, Select
Gold (Au) Plating,
with BMI Guides
1.27mm, 12.00mm 461144361
Pitch, EXTreme

LPHPower
Receptacle Header,
Vertical, 4 Power
Contacts, 36 Signal
Contacts, Select
Gold (Au) Plating,
without BMI Guides
1.27mm, 12.00mm 461146120
Pitch, EXTreme

LPHPower
Receptacle Header,
Vertical, 6 Power
Contacts, 12 Signal
Contacts, Select
Gold (Au) Plating,
with BMI Guides
1.27mm, 12.00mm 461146121
Pitch, EXTreme

LPHPower
Receptacle Header,
Vertical, 6 Power
Contacts, 12 Signal
Contacts, Select
Gold (Au) Plating,
without BMI Guides
1.27mm, 12.00mm 461146160
Pitch, EXTreme

LPHPower
Receptacle Header,
Vertical, 6 Power
Contacts, 16 Signal
Contacts, Select
Gold (Au) Plating,
with BMI Guides
1.27mm, 12.00mm 461146161
Pitch, EXTreme

LPHPower
Receptacle Header,

Vertical, 6 Power
Contacts, 16 Signal
Contacts, Select
Gold (Au) Plating,
without BMI Guides
1.27mm, 12.00mm 461146320
Pitch, EXTreme
LPHPower
Receptacle Header,
Vertical, 6 Power
Contacts, 32 Signal
Contacts, Select
Gold (Au) Plating,
with BMI Guides
1.27mm, 12.00mm 461146321
Pitch, EXTreme
LPHPower
Receptacle Header,
Vertical, 6 Power
Contacts, 32 Signal
Contacts, Select
Gold (Au) Plating,
without BMI Guides
1.27mm, 12.00mm 461146360
Pitch, EXTreme
LPHPower
Receptacle Header,
Vertical, 6 Power
Contacts, 36 Signal
Contacts, Select
Gold (Au) Plating,
with BMI Guides
1.27mm, 12.00mm 461146361
Pitch, EXTreme
LPHPower
Receptacle Header,
Vertical, 6 Power
Contacts, 36 Signal
Contacts, Select
Gold (Au) Plating,
without BMI Guides
1.27mm, 12.00mm 461148120
Pitch, EXTreme
LPHPower
Receptacle Header,
Vertical, Compliant
Pin, 8 Power
Contacts, 12 Signal
Contacts, Select
Gold (Au) Plating,
with BMI Guides
1.27mm, 12.00mm 461148121
Pitch, EXTreme
LPHPower
Receptacle Header,
Vertical, Compliant
Pin, 8 Power
Contacts, 12 Signal
Contacts, Select
Gold (Au) Plating,
without BMI Guides
1.27mm, 12.00mm 461148160
Pitch, EXTreme
LPHPower
Receptacle Header,

Vertical, Compliant Pin, 8 Power Contacts, 16 Signal Contacts, Select Gold (Au) Plating, with BMI Guides 1.27mm, 12.00mm Pitch, EXTreme LPHPower	<u>461148161</u>
Receptacle Header, Vertical, Compliant Pin, 8 Power Contacts, 16 Signal Contacts, Select Gold (Au) Plating, without BMI Guides 1.27mm, 12.00mm Pitch, EXTreme LPHPower	<u>461148320</u>
Receptacle Header, Vertical, Compliant Pin, 8 Power Contacts, 32 Signal Contacts, Select Gold (Au) Plating, with BMI Guides 1.27mm, 12.00mm Pitch, EXTreme LPHPower	<u>461148321</u>
Receptacle Header, Vertical, Compliant Pin, 8 Power Contacts, 32 Signal Contacts, Select Gold (Au) Plating, without BMI Guides 1.27mm, 12.00mm Pitch, EXTreme LPHPower	<u>461148360</u>
Receptacle Header, Vertical, Compliant Pin, 8 Power Contacts, 36 Signal Contacts, Select Gold (Au) Plating, with BMI Guides 1.27mm, 12.00mm Pitch, EXTreme LPHPower	<u>461148361</u>
Receptacle Header, Vertical, Compliant Pin, 8 Power Contacts, 36 Signal Contacts, Select Gold (Au) Plating, without BMI Guides	

This document was generated on 07/31/2021

PLEASE CHECK WWW.MOLEX.COM FOR LATEST PART INFORMATION