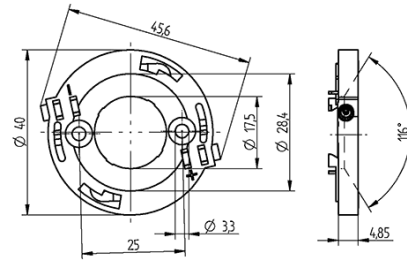
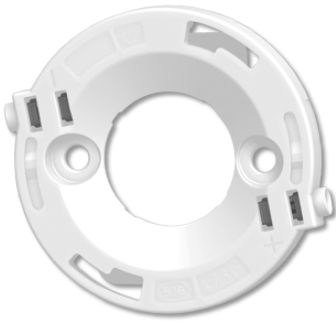


COB connector Ø 40 mm for LED array 19 x 19 mm 47.319.6024.50



0.25-0.5 mm²



0,5 mm²

COB connector Ø 40 mm for LED array 19 x 19 mm 47.319.6024.50



DESCRIPTION

With integrated reflector interface
Screw mounting: for screws M3 and locking washer
Max. torque for screw fixing 0.5 Nm*
Strip length: 7-1 mm
Polarity of LED must be observed
Specifications of LED manufacturer must be observed
cURus: For limited applications
VDE-Reg. No. E289
*Please note the max torque of the COB manufacturer

Product name:	COB connector Ø 40 mm for LED array 19 x 19 mm
Mounting method 1:	Screw mount
Mounting method 2:	P2F fixing with 28.902.-102
Prefixation of COB:	Yes
Material:	Housing: PBT Contacts: CuSn
LED manufacturer:	LEDtech, Xicato, Vossloh-Schwabe, Tridonic, Sunpu, Seoul Semiconductor, OSRAM Opto Semiconductors, Luminus, Liteon, Lextar, Prolight Opto, Edison, Itswell, Citizen, Bridgelux, Everlight
LED Typ:	LP30N3-84N-B131299, SLE G6/G7 LES 15, G17, ZC12/18, V13 - Gen. 7, PACB 032/PACF 57, M045, Opto 30W, PB26H01, Xuan1919, Soleriq S13 - 19x19 mm, SLE G6 LES 17, PB19H01, DMC 114/118/125/128, SAWS1564A / 1566A, COB-N series, CIM-14 / CLM-14 / CXM-14, Soleriq S15, CHM-9 / CHM-11, CVM-14, LES 14.5 (19 x 19 x 0.9 mm), PB16H01, CLU03X / 712 / 72X
Conductor cross-section:	0.5 mm ²
Approval:	cURus
cULus file no.:	E-345385
Rating:	3A / 150 VDC
Weight:	3
Pkg.:	420

Suitable for the following LED models:

LED Manufacturer	LED Type	More Information
Bridgelux	V13 - Gen. 7	http://www.bridgelux.com
Lextar	PB26H01	http://www.lextar.com
Lextar	PB16H01	http://www.lextar.com
Lextar	PB19H01	http://www.lextar.com
OSRAM Opto Semiconductors	Soleriq S13 - 19x19 mm	http://www.osram-os.com
Liteon	M045	http://optoelectronics.liteon.com
Itswell	COB-N series	http://www.itswell.com
Tridonic	SLE G6/G7 LES 15	http://www.tridonic.com
Luminus	CIM-14 / CLM-14 / CXM-14	http://www.luminus.com
Edison	Opto 30W	http://www.edison-opto.com.tw
Prolight Opto	PACB 032/PACF 57	http://www.prolightopto.com

COB connector Ø 40 mm for LED array 19 x 19 mm 47.319.6024.50



Seoul Semiconductor	ZC12/18	http://www.seoulsemicon.com
Everlight	Xuan1919	http://www.everlight.com
LEDtech	LP30N3-84N-B131299	http://www.ledtech.com.tw
Vossloh-Schwabe	DMC 114/118/125/128	http://www.vossloh-schwabe.com
Sunpu	G17	http://www.sunpuled.com
Tridonic	SLE G6 LES 17	http://www.tridonic.com
Citizen	CLU03X / 712 / 72X	http://ce.citizen.co.jp
Seoul Semiconductor	SAWS1564A / 1566A	http://www.seoulsemicon.com
OSRAM Opto Semiconductors	Soleriq S15	http://www.osram-os.com
Luminus	CHM-9 / CHM-11	http://www.luminus.com
Luminus	CVM-14	http://www.luminus.com
Xicato	LES 14.5 (19 x 19 x 0.9 mm)	https://www.xicato.com/