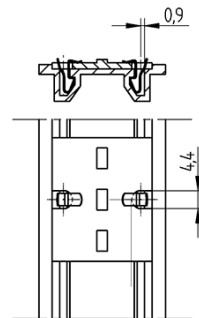
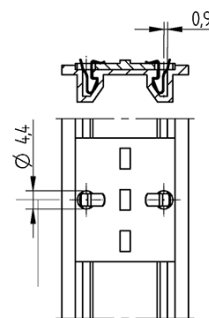
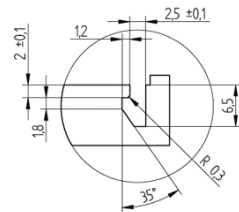
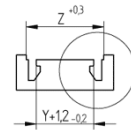
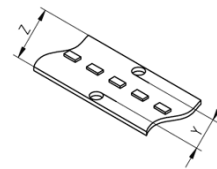
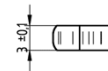
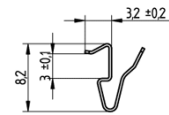


# P2F - Push to Fix - Fixing element for PCBs

## 28.903.-101.10



T 130

Tm 110

U out  
500 V



# P2F - Push to Fix - Fixing element for PCBs

28.903.-101.10

---



18 AWG 0,5 - 1,0  
mm<sup>2</sup>



0,4 - 2,0



# P2F - Push to Fix - Fixing element for PCBs

## 28.903.-101.10



### DESCRIPTION

Quick, secure assembly using (manual) setting devices with magnet  
No shadowing of the LED, lowest possible design above the LED module while fulfilling attachment and contact pressure functions  
Coordinated system guarantees permanent contact pressure for the module by means of very strong but elastic metal spring  
After installation a permanent contact force of 10N is guaranteed  
Form-fitting snap-in connection  
Shock and vibration resistant  
Floating connection compensates tolerances and thermal length variations  
A defined clamping range 3,5mm +/-0,2 (package thickness), made up of LED module and profile step)  
Lower insertion force compared to the axial force required for the screw-fixing processr

Country of origin:	DE
Product name:	P2F - Push to Fix - Fixing element for PCBs
Packaging type:	Bag
Packaging quantity:	4000.000
Mounting method 1:	Push-in fixing for mounting PCBs
Total thickness (X):	Thickness of LED module and aluminium profile: 3.5 ±0.2 mm
Material:	CrNi
Weight:	2
Pkg.:	4000