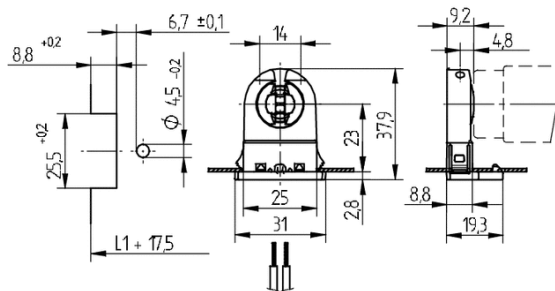


Fluorescent lampholder G13

26.292.6211.51



T 130

Tm110

U out
500 V



18 AWG 0,5 - 1,0
mm²

0,4 - 2,0

Fluorescent lampholder G13

26.292.6211.51



DESCRIPTION

Lamp center: 23 mm
Push through mount

Housing: PC

Rotor: PBT

cULus file no.: E-92235

- For cut-outs open at the rear or enclosed cut-outs with 4.5 mm dia. locating hole

- A pair of lampholders provides a lamp length tolerance compensation of 3 mm

- Instantstart version for USA and Canada: with integrated short circuiting bridge

Product name:	Fluorescent lampholder G13
Mounting method 1:	Push through mount
Lamp center:	23
Material:	Housing: PC Rotor: PBT
T-Marking:	130
Locating pin:	yes
Approval:	cULus
cULus file no.:	E-92235
Material thickness:	0.4 - 2.0
Color:	white
Weight:	6
Pkg.:	5000