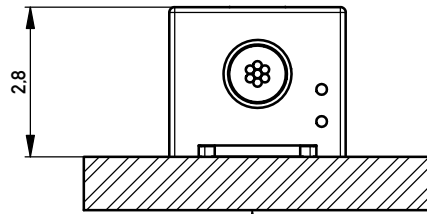
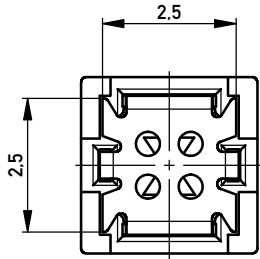
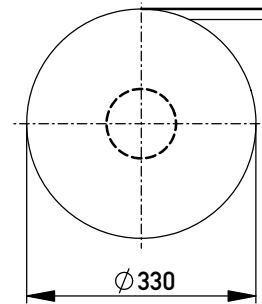


Terminal verpresst
Terminal pressed

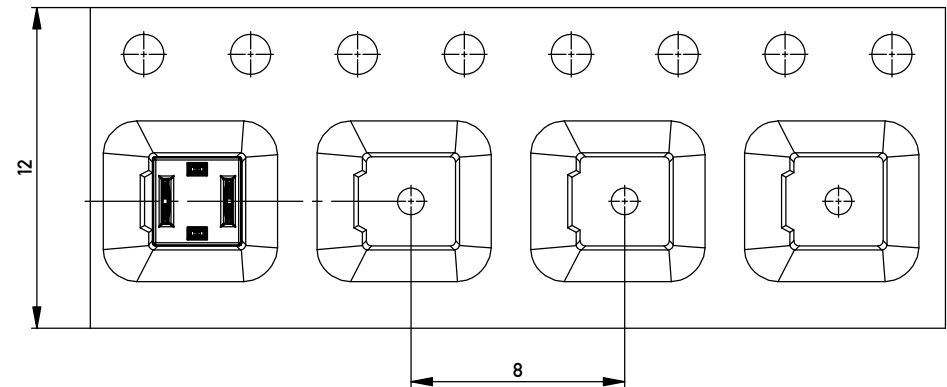
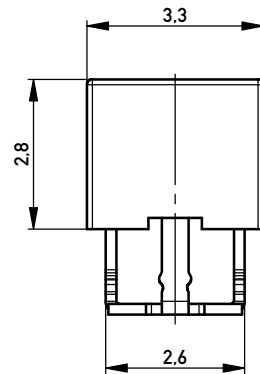
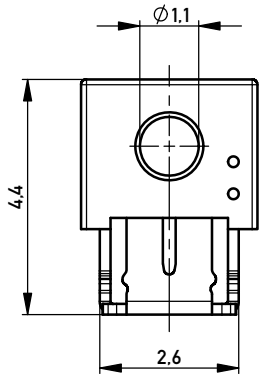
Verpackt im Gurt nach DIN IEC 60286-3
Tape on Reel Packaging according to DIN IEC 60286-3
Verpackungseinheit: 2000 Stück
Packaging unit: 2000 pcs



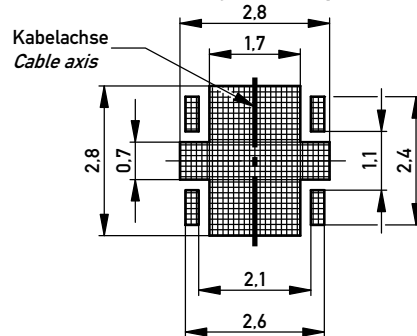
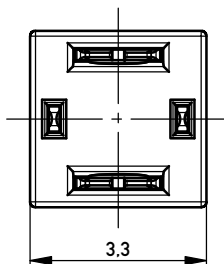
Leiterplatte
PCB



Abspulrichtung - Reel off Direction



Leiterplatten-Layout Vorschlag
PCB-Layout Proposal



*AWG 24/7 - 26/7 D 1,1 ohne Kabelanschlag
*AWG 24/7 - 26/7 D 1,1 without cable stop

| | | | | |
|----------------------------------------------------------------------------------|-----------------------------------------------------------------------------------------------------------------------------------------------------------------------------|-----------------------------|----------------------------------------------------------------------|------|
| Information: Farbe: schwarz color: black | Tolerances | All Dimensions in mm | Scale | 10:1 |
| | All rights reserved. Only for Information. To ensure that this is the latest version of this drawing, please contact one of the ERNI companies before using. | | Designation Schneidklemmterminal * <i>IDC-Terminal*</i> | |
| Subject to modification without prior notice. Drawing will not be updated. | | www.ERNI.com | 474337 | |
| a | 19.03.2015 | | Class IDC-TERM | |
| Index | Date | I A3 | | |

Copyright by ERNI GmbH.
 Proprietary notice pursuant to ISO 9006 to be observed.

Mouser Electronics

Authorized Distributor

Click to View Pricing, Inventory, Delivery & Lifecycle Information:

[TE Connectivity:](#)

[474337](#) [474337-E](#)