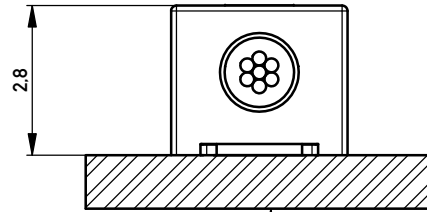
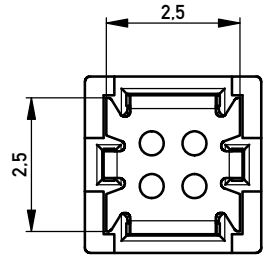
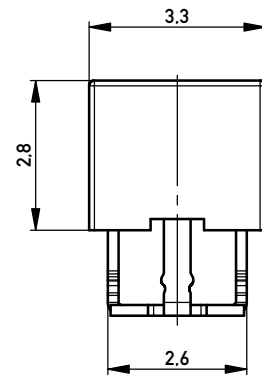
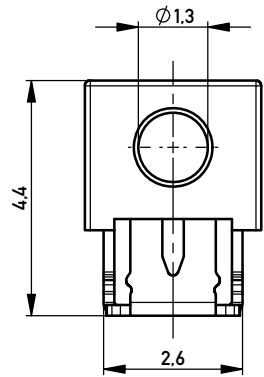
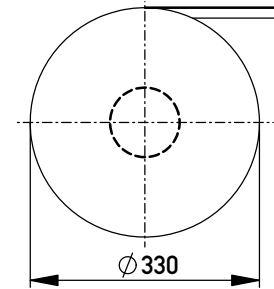


Terminal verpresst  
Terminal pressed

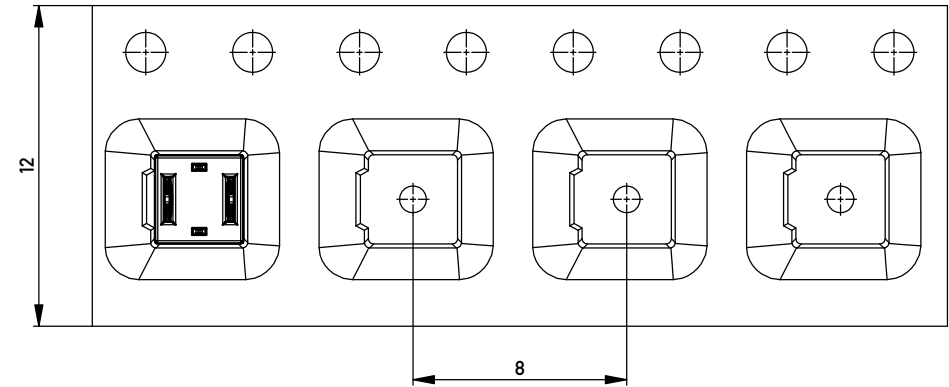


Leiterplatte  
PCB

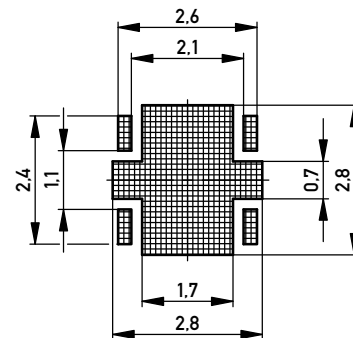
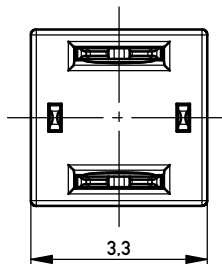
Verpackt in Gurtverpackung  
Tape on Reel Packaging  
Verpackungseinheit: 2000 Stück  
Packaging unit: 2000 pcs



Abspulrichtung - Reel off Direction



Leiterplatten-Layout Vorschlag  
PCB-Layout Proposal



\*AWG 22/7 D 1,3 ohne Kabelanschlag  
\*AWG 22/7 D 1,3 without cable stop

Information:		Tolerances		Scale	10:1
All rights reserved. Only for Information. To ensure that this is the latest version of this drawing, please contact one of the ERNI companies before using.		Subject to modification without prior notice. Drawing will not be updated.		Designation	
ERNI		www.ERNI.com		Schneidklemmterminal * IDC-Terminal*	
a		05.12.2012		454302	
Index		Date		Class IDC-TERM	
				I A3	

Copyright by ERNI GmbH  
Proprietary notice pursuant to ISO 9006 to be observed.

# Mouser Electronics

Authorized Distributor

Click to View Pricing, Inventory, Delivery & Lifecycle Information:

[TE Connectivity:](#)

[454302](#) [454302-E](#)