



Quick Start Guide

TSL2540 EVM

TSL2540 ALS, Light-to-Digital Sensor Evaluation Kit

Version 1.0

Contents

1	Out of the Box	3
2	Software Installation	3
3	Connect Hardware	5
4	Start the Application	5
5	Uninstall Application	6
6	Contact and Support	6

1 Out of the Box

Each TSL2540 Evaluation Kit comes with the following components:

No.	Item	Description
1	TSL2540 Daughter Card	PCB with TSL2540 sensor installed
2	EVM Controller Board V2.2	Used to communicate USB to I2C
3	USB Cable (A to Mini-B)	Connects EVM controller to PC
4	Flash Drive	Include application installer and documents

Figure 1. Evaluation Kit Contents



2 Software Installation

1. Plug in the ams flash drive into an unused USB port.
2. Double-click the **Setup.exe** file on the flash drive, or click Start > Run and type E:setup.exe and press Enter. **IMPORTANT:** Use the appropriate drive letter in the above command to install the software. Flash Drive will commonly be assigned the next available drive letter for example C: hard drive D: CD-ROM E: flash drive
3. The Setup Wizard will open and guide you through the installation of the TSL2540 host software, (Figure 2 through 8).
4. At the end of the installation, click Finish to exit the setup.

Figure 2. Welcome Screen

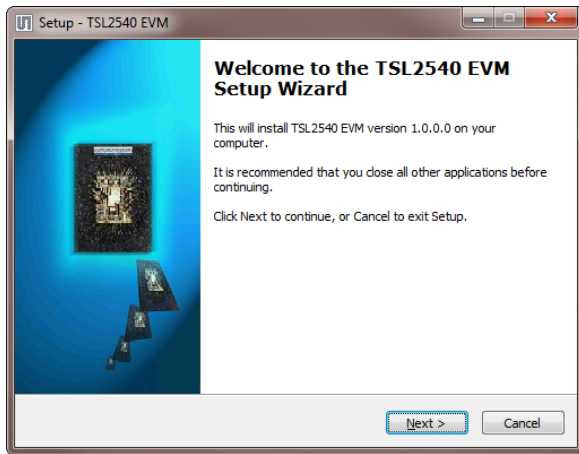


Figure 3. Liability Disclaimer

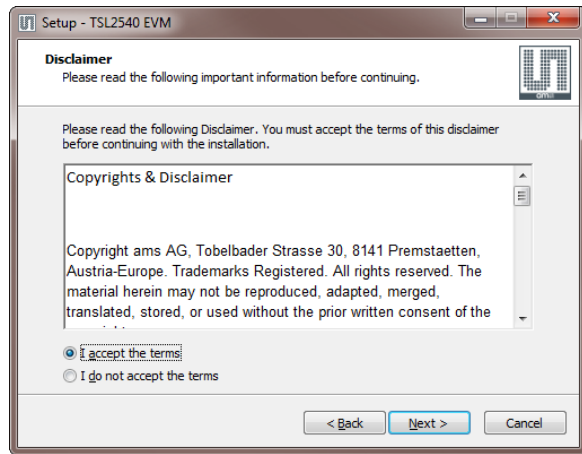


Figure 4. Select Installation Folder

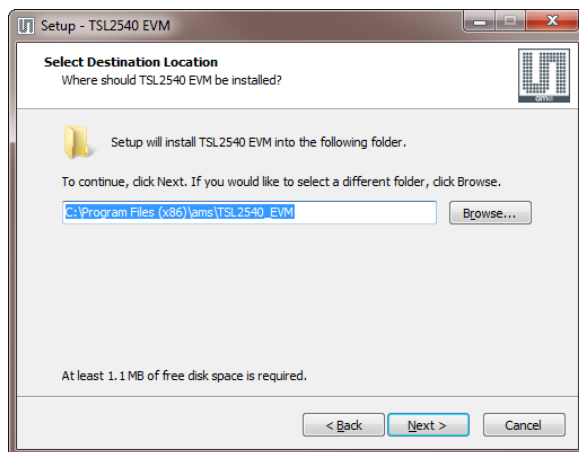


Figure 5. Select Start Menu Folder

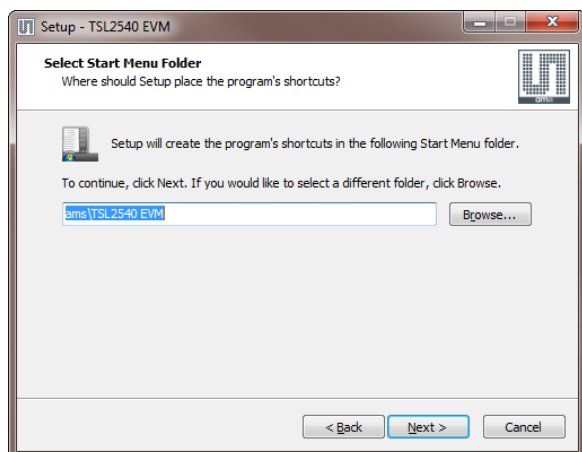


Figure 6. Installation in Progress

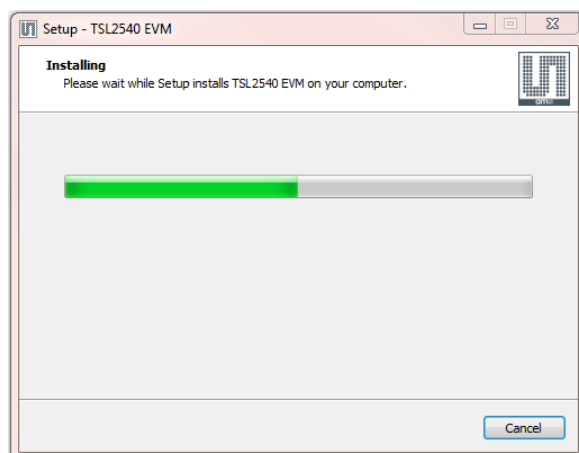


Figure 7. Information Screen

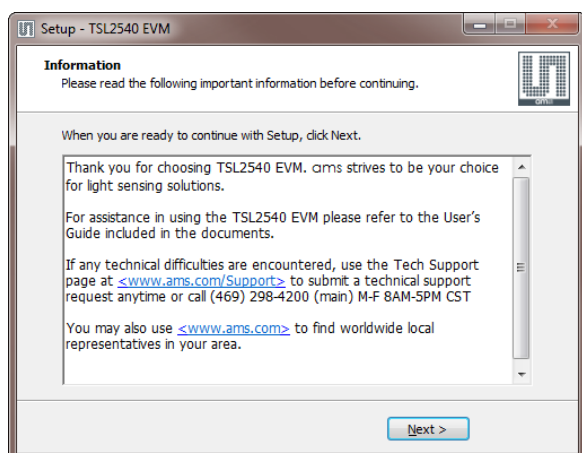
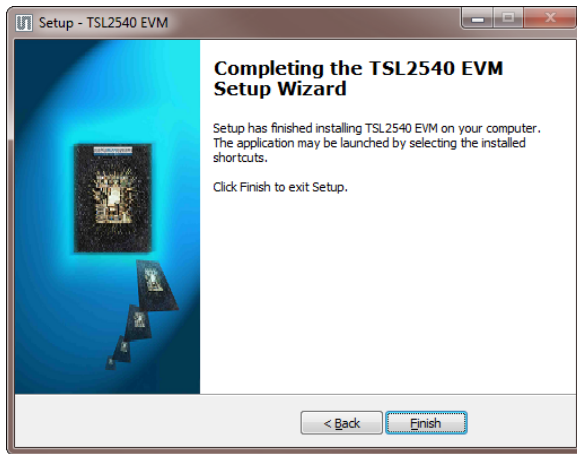


Figure 8. Installation Completed Successfully

3 Connect Hardware

Plug the TSL2540 Daughterboard into the Controller board. (Figure 1) Always use ESD procedures when handling the EVM.

Using the enclosed USB cable, plug the mini-B connector into the EVM module. Using the other end of the cable, plug the USB A-connector into a USB port on the computer.

When the USB cable is connected, the green LED should flash on power up to indicating that power is being received via the USB interface, and the controller board processor is running. If the green LED does not flash, check the USB cable connections; unplug the USB cable and try again. If the green LED still does not flash, check the PC for USB error messages.

4 Start the Application

To start the application select `ams > TSL2540 EVM > TSL2540 EVM` on the All Programs menu. The default installation directory depending on the device and the operating system you are using is:

`C:\Program Files\ams\TSL2540_EVM Windows 32 bit operating systems`

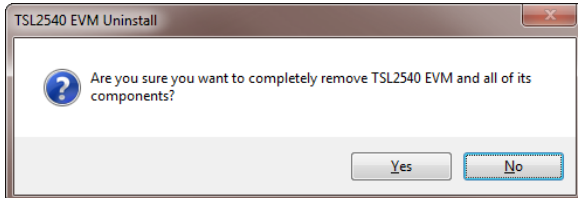
`C:\Program Files (x86)\ams\TSL2540_EVM Windows 64 bit operating systems`

A different install path may be selected by the user during the install (Figure 4). When started, the TSL2540 window will open on the PC and automatically connect to the hardware.

5 Uninstall Application

To remove the software from your computer (Figure 9), select `ams > TSL2540 EVM > Uninstall TSL2540 EVM` or use the Windows Control Panel.

Figure 9. Remove Installation



6 Contact and Support

For detail in using the TSL2540 EVM please refer to the User's Guide included in the documents.

If any technical difficulties are encountered, use the Tech Support page at www.ams.com/Support to submit a technical support request anytime or call (469) 298-4200 (main) M-F 8AM-5PM CST

You may also use www.ams.com to find worldwide local representatives in your area.