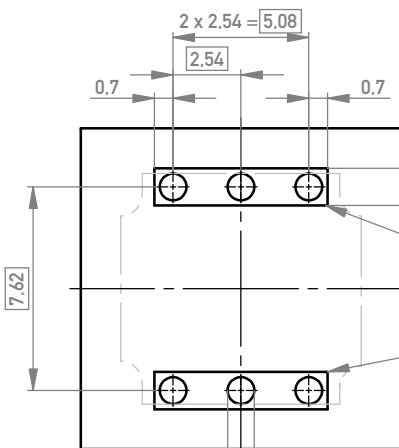


M 2:1

Leiterplattenbohrbild
PCB drillhole pattern



Dieser Bereich muß gleiches Potential auf der LP-Oberfläche haben
This area must have same electrical potential on surface of PCB

$\phi 0.05$

alle Löcher/
all holes

214788	M4
214801	M3
214802	6-32UNC
214803	8-32UNC
Id.-Nr.: Part No.	Gewinde Thread

Information:	Tolerances	Scale 5:1	Designation SVA 6-polig TL Power Bug 6 pin TL
	All rights reserved. Only for Information. To ensure that this is the latest version of this drawing, please contact one of the ERNI companies before using.		
Copyright by ERNI GmbH Proprietary notice pursuant to ISO 9006 to be observed.	ERNI www.ERNI.com	204821	I A3
d	23.11.2020	Class	EPSVA
Index	Date		

Mouser Electronics

Authorized Distributor

Click to View Pricing, Inventory, Delivery & Lifecycle Information:

[TE Connectivity:](#)

[214788](#) [214788-E](#)