

PRODUCT NUMBER  
76745-YXX-XXLF

RoHS COMPATIBLE, SEE NOTE 8  
TOTAL NB OF POS (04 TO 72 POS)  
OPTION LETTER, SEE NOTE 6  
PIN STYLE

PLATING  
1 = 0.76µm GOLD/GXT,  
3 = 2µm MIN MATTE TIN FULL PLATED  
5 / 8 = 0.38µm GOLD/GXT  
7 = GOLD FLASH FULL PLATED  
1.27µm Ni MIN UNDERPLATING

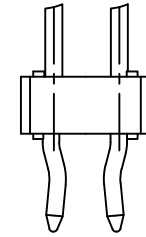
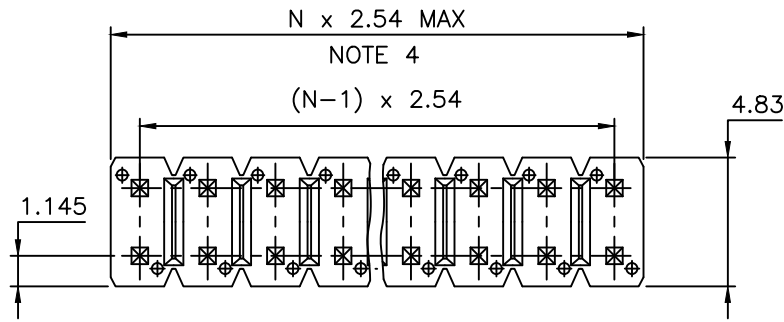
G = 0.76µm GOLD/GXT IN ZONE "A", 2µm MATTE TIN IN ZONE "B"  
ALL OVER 1.27µm Ni MIN

NOTES:

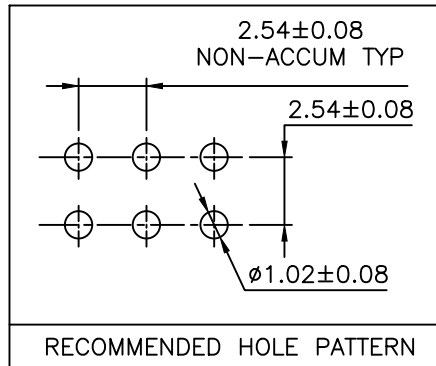
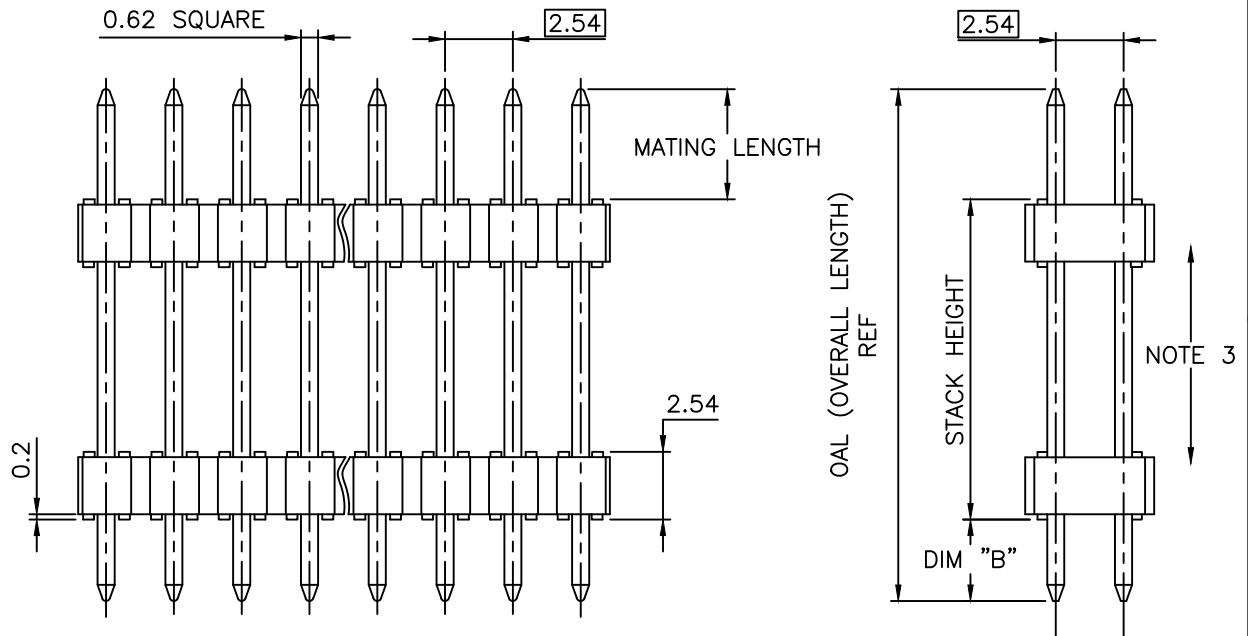
- HOUSING MAT'L : HIGH TEMPERATURE THERMOPLASTIC. UL94V-0 COLOR: BLACK.
- PIN MATERIAL : PHOSPHOR BRONZE.
- 12N MIN RETENTION IN EITHER DIRECTION.
- TO DETERMINE DIMENSIONS :  
N = NUMBER OF POSITIONS PER ROW  
EXAMPLE : 8 POS PER ROW, N x 2.54 = 20.32mm
- FOR STANDARD SELECTIVE GOLD PLATED PRODUCTS SEE DRAWINGS 54112 & 54122.
- OPTION LETTER :  
- = STANDARD PACKAGING IN POLYBAG  
V = POLYBAGS PACKAGING FOR CUSTOMER DEDICATED PART  
B = TUBE WITH PICK UP CAP AS AVAILABLE
- RETENTION IS APPLIED TO TWO ADJACENT PINS AT EACH END OF THE PRODUCT SEE SCHEMA 1  
OMIT FROM PRODUCT NUMBER IF THIS FEATURE IS NOT APPLICABLE

8. RoHS COMPATIBLE PRODUCT SPECIFICATIONS

- PLATING:**  
- "LF" MEANS THE PRODUCT IS LEAD-FREE, 2µm MINIMUM MATTE TIN OVER 1.27µm MINIMUM NICKEL UNDERPLATE.
- MANUFACTURING PROCESS COMPATIBILITY**  
- THE HOUSING WILL WITHSTAND EXPOSURE TO 260°C ±5°C SOLDER BATH TEMPERATURE FOR WITH A 1.6mm MIN THICK CIRCUIT BOARD.
- LABELING:**  
- MEETS PACKAGING SPECS AS PER GS-14-920
- LEGAL STATEMENT:** SEE GS-47-0004



SCHEMA 1  
TWO RETENTION PIN AT EACH END OF THE PRODUCT



mat'l. code		surface		tolerance		projection		product family	
SEE NOTES		ISO 1302 ✓		ISO 406 ISO 1101		mm		BERGSTIK	
ltr	ecn no	dr	date	tolerances unless otherwise specified		mm		title	
FP	F-45357	DDE	22.07.11	angles	x.x ±0.3	mm		HEADER STR,DR	
FR	F-47118	DDE	23.01.27	linear	x.xx ±0.13	scale 5:1		DOUBLE BODY	
FS	F-49242	DDE	23.09.12		x.xxx ±0.05			dwg no	
FT	F-50712	DDE	24.02.09	dr	NIZZI P	94.05.05		sheet 1 of 4	
				engr	COMPAGNON J	95.12.05		size	
				chr				76745	
FN	F-40885	DDE	21.05.11	appd	JMC	95.12.05		A3	
sheet	revision	FT	CK	F	A			type	
index	sheet	1	2	3	4			CUSTOMER Drawing	



APPLICATION SPECIFIC				
PIN STYLE	MATING LENGTH ±0.2	STACK HEIGHT ±0.25	"B" ±0.25	("OAL") REF
01	8.71	19.76	2.65	31.12
02	6.87	16.5	3.05	26.42
03	6.87	13.0	3.63	23.5
04	5.6	6.5	2.88	14.98
05	5.51	8.0	3.05	16.56
06	6.61	11.3	3.05	20.96
07	5.58	10.3	2.54	18.42
08	5.81	7.7	3.05	16.56
09	5.72	5.08	2.54	13.34
10	6.9	10.45	2.71	20.06
11	11.2	9.5	2.8	23.5
13	9.07	6.3	3.05	18.42
14	5.33	21.5	2.48	29.31
17	7.5	23.45	3.05	34.0
19	9.5	10.45	3.55	23.5
21	11.96	18.5	3.2	33.66
23	9.0	25.9	3.05	37.95
24	8.87	14.5	3.05	26.42
25	9.84	11.43	9.85	31.12
28	6.6	8.25	2.8	17.65
29	9.1	15.7	3.2	28.0
34	8.0	12.0	3.0	23.0
36	10.55	7.5	10.53	28.58
40	7.0	6.5	3.06	16.56
55	13.0	20.0	3.2	36.2
57	11.78	5.08	3.23	20.06
58	23.0	8.5	5.5	36.97
59	9.0	18.2	9.0	36.2
62	9.2	9.3	3.5	22.0
68	6.75	8.0	2.9	17.65
71	6.8	5.2	2.69	14.69
79	9.95	39.0	3.05	52.0
80	5.68	7.0	2.3	15.0
88	10.8	8.0	3.7	22.5
AN	10.0	29.0	3.0	42.0
BD	11.7	13.5	3.21	28.41
BM	11.5	11.5	3.04	26.04
BT	8.5	35.0	8.5	52.0
CB	9.0	30.0	3.0	42.0
CD	9.24	12.0	9.24	30.48

SEE SHEET 3

APPLICATION SPECIFIC				
PIN STYLE	MATING LENGTH ±0.2	STACK HEIGHT ±0.25	"B" ±0.25	("OAL") REF
CF	8.25	16.0	8.25	32.5
CG	6.0	40.0	6.0	52.0
CH	11.02	12.0	3.02	26.04
CN	7.08	5.60	7.08	19.77
CP	9.50	7.00	2.41	18.91
CT	11.0	6.0	11.0	28.0
CU	9.75	13.0	9.75	32.5
CV	9.44	13.00	3.60	26.04
CW	5.00	36.00	5.00	46.00
CX	10.00	26.00	6.00	42.00
CY	10.9	18.20	10.9	40.00
CZ	5.5	23.00	5.50	34.00
DA	13.00	14.50	6.50	34.00
DB	12.75	8.50	12.75	34.00
DC	SEE SHEET 3			
DE	6.00	34.00	6.00	46.00
DF	9.12	7.80	9.12	26.04
DG	3.50	43.00	3.50	50.00
DH	6.50	8.00	6.50	21.00
DJ	5.80	17.75	5.80	29.31
DK	5.40	9.00	2.90	17.30
DL	9.00	8.50	6.00	23.50
DM	7.40	23.70	3.30	34.40
DN	7.40	12.10	3.30	22.80
DP	8.00	16.80	5.40	30.20
DR	6.40	15.00	6.40	27.80
DS	7.00	29.00	7.00	43.00
DT	9.80	27.40	9.80	47.00
DU	9.50	36.50	9.50	55.50
DV	9.30	6.30	5.80	22.00
DW	5.30	40.40	3.30	49.00

SEE SHEET 3

SEE SHEET 3

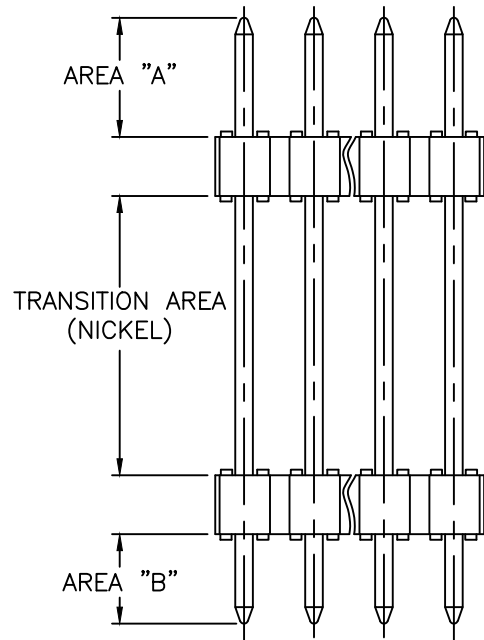
SEE SHEET 3

APPLICATION SPECIFIC				
PIN STYLE	MATING LENGTH ±0.2	STACK HEIGHT ±0.25	"B" ±0.25	("OAL") REF
DX	6.50	12.50	6.50	25.50
DY	6.50	9.50	6.50	22.50
EA	6.65	32.30	3.05	42.00
EB	2.66	15.00	5.84	23.50
EC	10.00	39.60	2.40	52.00
ED	5.40	57.20	2.40	65.00
EF	5.84	46.50	3.05	55.40
EG	5.60	20.00	5.64	31.24
EH	4.60	15.00	1.50	21.10
EJ	9.26	5.08	9.26	23.60
EK	6.00	7.50	6.00	19.50
EL	6.00	12.30	4.10	22.40
EM	9.00	9.30	6.21	24.51
EN	5.75	26.90	5.75	38.40
EP	6.50	36.40	6.50	49.40
ER	6.00	40.90	5.10	52.00
ES	5.50	16.50	3.50	25.50
ET	6.00	40.90	3.90	50.80
EU	6.50	30.00	3.50	40.00
EV	5.80	14.50	3.30	23.60
EW	14.68	33.02	6.35	54.05
EX	4.50	10.20	4.50	19.20
EY	7.75	31.50	4.80	44.05
FA	4.35	7.62	1.50	13.50
FB	5.80	43.50	4.10	53.40
FC	5.59	5.08	2.79	13.46
FD	7.24	8.00	2.91	19.15
FE	9.80	12.40	5.50	27.70
FF	5.75	29.00	5.75	40.50

mat'l. code		surface		tolerance		projection		product family	
		ISO 1302		ISO 406 ISO 1101				BERGSTIK	
ltr		ecn no		dr		date		title	
CJ		F-49242		DDE		23.09.12		HEADER STR,DR	
CK		F-50712		DDE		24.02.09		DOUBLE BODY	
				angles		linear		mm	
								scale	
CE		F-40441		DDE		21.03.19		COMPAGNON J	
CF		F-40885		DDE		21.05.11		enrg JMC	
CG		F-45357		DDE		22.07.11		chr	
CH		F-47118		DDE		23.01.27		appd JMC	
sheet		revision							
index		sheet							
								dwg no	
								sheet 2 of 4	
								size	
								A3	
								type	
								CUSTOMER	
								Drawing	



Copyright FCI



SPECIFICS PLATING AREA FOR PART NUMBERS :

- P/N 76745-1CH-10LF
- P/N 76745-1CH-18LF
- P/N 76745-579R24LF
- P/N 76745-579R30LF
- P/N 76745-1CU-20LF
- P/N 76745-1DF-26LF

AREA "A" & "B" : GOLD/GXT PLATING AREA

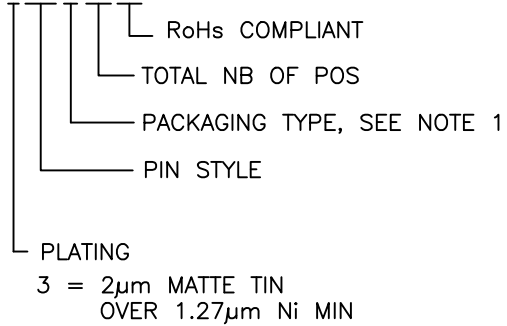
mat'l. code		surface		tolerance		projection		product family	
		ISO 1302 <input checked="" type="checkbox"/>		ISO 406 ISO 1101				BERGSTIK	
ltr	ecn no	dr	date	tolerances unless otherwise specified		mm		title	
A	F06-110	LMU	06.01.26	angles	linear			HEADER STR,DR	
B	F06-0196	LMU	06.06.20			scale		DOUBLE BODY	
C	F07-0266	J.CO	07.10.15					dwg no	
D	F12-0023	LMU	12.06.06	dr	L.MULIN	06.01.31			sheet 3 of 4
E	F12-0090	JFA	12.12.07	enrg	J.COMPAGNON	06.01.31	76745		size
F	B-16665	LMU	14..01.06	chr			type		A3
				appd	JMC	06.01.31	CUSTOMER		Drawing
sheet	revision								
index	sheet								



Copyright FCI

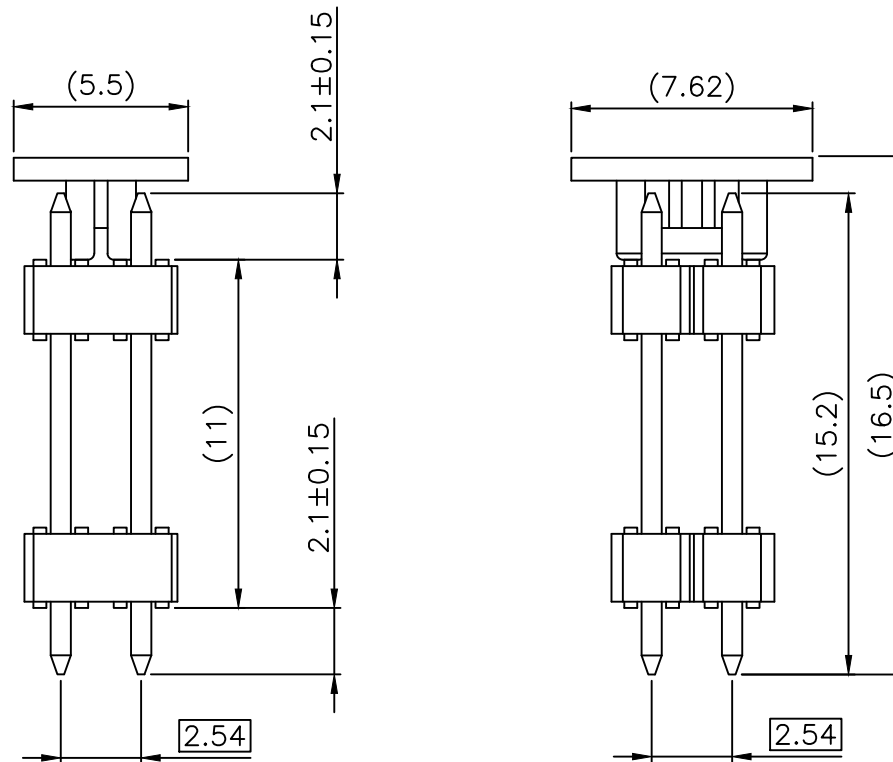
SPECIFIC PRODUCT NUMBER

76745-3DCA04LF



NOTES :

1. PACKAGING : A = TAPE & REEL PACKAGING WITH PICK UP CAP INSTALLED SEE TA 840
2. PRODUCT COMPATIBLE WITH REFLOW PROCESS. 255°C PEAK TEMPERATURE 10-40 SECONDES IN A CONVECTION, INFRA-RED OR VAPOR PHASE



mat'l. code		surface ISO 1302 <input checked="" type="checkbox"/> ISO 406 <input type="checkbox"/> ISO 1101 <input type="checkbox"/>		tolerance tolerances unless otherwise specified		projection 		product family BERGSTIK	
ltr	ecn no	dr	date	angles		mm		title HEADER STR,DR DOUBLE BODY	
A	B-16665	LMU	14.01.06	linear		scale		dwg no 76745	
		dr	L.MULIN	13.02.18			sheet 4 of 4		size A3
		enr	J.COMPAGNON	13.02.18			type CUSTOMER		Drawing
		chr							
		appd	JMC	13.02.18					
sheet index	revision sheet								

