

Euromas ABS / PC / F05

Enclosure, polycarbonate



M 252

Order no.: 02252000

* = Available on request.

Characteristics

Colour of enclosure group

Light grey

Protection class

IP 65

Enclosure Material

ABS, PC (UV stabilised) and selected sizes in PC UL 94 V0 (additional UL 94 V0 versions on request), seal made of CR;

V215: Vestamid, CR seal; for details see Technical Information

Scope of delivery

Lid and base, lid screws made of V2A, self-tapping screws for mounting bosses

Note

G = Design with crystal-clear lid.

IP = Ingress protection acc. to DIN EN 60529

Important!

To compensate for pressure when temperatures change and cause moisture in the enclosure, we recommend that you use a pressure compensation element.

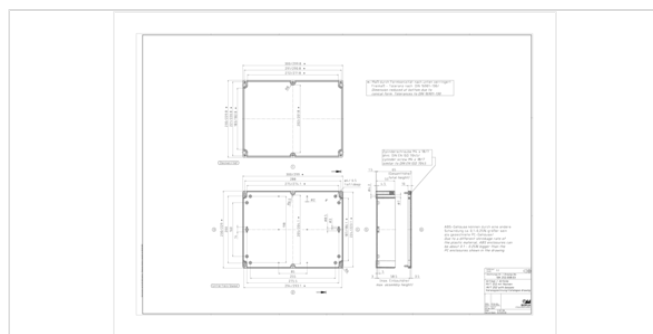
» Additional information

Dimensions

Dimensions

300 x 230 x 65 mm

Product drawing



Technical documentation / Downloads

Technical drawings

3D product data in STEP format: 02252000 M-252.stp (1.7 MB)
Drawing for mechanical processing: 02252000 M-252-G.dxf (1.0 MB)

Milling contours are shown here as a DXF file. (Sub D, USB, HDMI, cable glands, ...)

Product drawing in PDF format: 02252000 M-252.pdf (104.2 KB)
Product drawing in DXF format: 02252000 M-252.dxf (849.3 KB)

Works Test Certificates

670 WPZ-Euromas-PC DE.pdf (197.3 KB)
670 WPZ-Euromas-PC EN.pdf (191.1 KB)

Product information

Euromas ABS PC GB.pdf (337.6 KB)

Matching accessories



Mounting plates, laminated paper (Pertinax), galvanised steel for version 260

22001500 M For M/T 252-254



Rubber feet, plug-in

22003300 F For M/T 208-260



Wall brackets on rear, screw-on, polycarbonate

22004900 WL For M/T 210-243, M/T 246-253



DIN rails DIN EN 60715 TH 15, galvanised steel

22002920 TS 15 For M/T 252-254



DIN rails DIN EN 60715 G 32, galvanised steel

22002900 TS 32 For M/T 252-254



DIN rails DIN EN 60715 TH 35, galvanised steel

22002910 TS 35 For M/T 252, 253, 254



Screws (SHR) and distance bolts (DIBLZ) for mounting bosses in plastic enclosures

59006101 SHR Z B4,5x7,8 SD = 4.5 / ND = 4.0 / KD = 7.5



Threaded inserts, brass, for mounting bosses in plastic enclosures

59002810 DODGE M3x6,5 ND = 4.0 x 6.5

59002820 DODGE M4x9,5 ND = 5.4 x 9.5