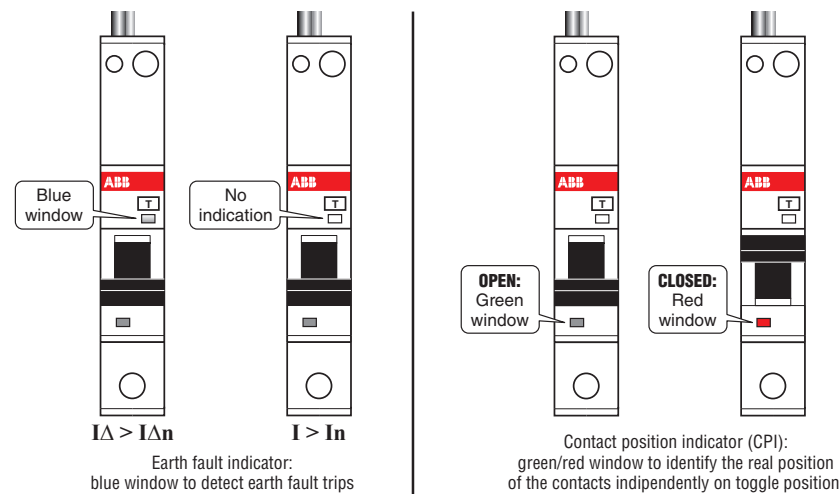
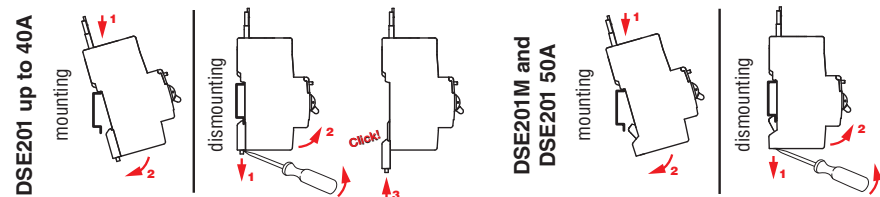
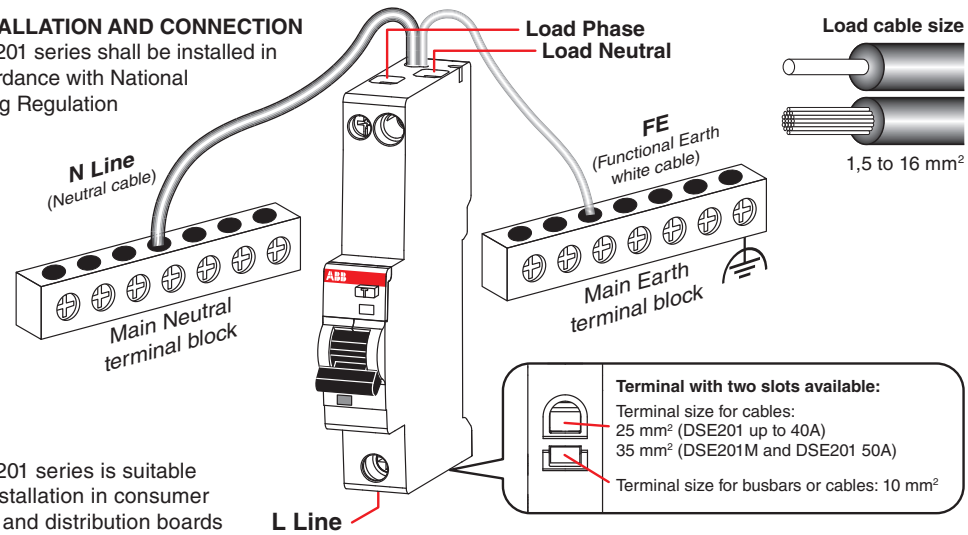


**Remove elastic band before installation**

**INSTALLATION AND CONNECTION**  
DSE201 series shall be installed in accordance with National Wiring Regulation



|                 | Height | Earth fault indicator | Contact position indicator | Height                  | Earth fault indicator | Contact position indicator |
|-----------------|--------|-----------------------|----------------------------|-------------------------|-----------------------|----------------------------|
| <b>DSE201 M</b> | 115 mm | yes (blue window)     | yes (green/red window)     | <b>DSE201 up to 40A</b> | no                    | yes (on toggle)            |
|                 |        |                       |                            | <b>DSE201 50A</b>       | no                    | yes (green/red window)     |

If DSE201 series trips there are three possibilities:  
1) overload  
2) short circuit  
3) earth leakage current  
In any case, check the installation before resetting the RCBO.

The proper IP safety level should be achieved during installation by employing appropriate enclosure meeting IEC 60364 standards.  
The RCBO can be cleaned with a damp, soapy cloth.  
No corrosive or similar solvent should be used.

