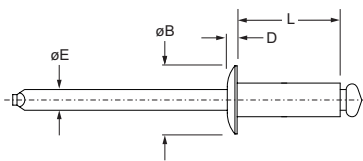

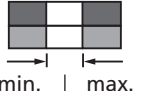
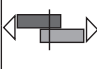





English	Français	Deutsch	Italiano	Español
Dome head	Tête plate	Flachrundkopf	Testa Tonda	Cabeza alomada
Body: Aluminium* Natural	Corps: Aluminium* Brut	Hülse: Aluminium* Unbehandelt	Corpo: Alluminio* Nessuna finitura	Cuerpo: Aluminio* Natural
Stem: Steel	Tige: Acier	Dorn: Stahl	Gambo: Acciaio	Vástago: Acero

\*: 3.5 % Magnesium Alloy



ø nom.					L ref.	øE ref.	øB max.	D max.	 kN <sup>1)</sup>	 kN <sup>1)</sup>	Part No.
	min.	max.	min.	max.							
2.4 (3/32")		0.8	2.5	2.6	3.5	1.42	5.0	0.9	0.40	0.50	TAPD 31 BS
	0.8	2.4			5.3						TAPD 33 BS
	2.4	4.8			7.6						TAPD 36 BS
3.0		2.0	3.1	3.2	5.2	1.83	6.3	1.1	0.80	1.00	SNAD 3050 BS
	2.0	3.5			6.5						SNAD 3065 BS
	3.5	5.0			8.2						SNAD 3080 BS
	5.0	7.0			10.0						SNAD 3100 BS
	7.0	9.0			12.2						SNAD 3120 BS
	9.0	12.0			15.2						SNAD 3150 BS
3.2 (1/8")		1.6	3.3	3.4	4.4	1.83	6.7	1.1	0.80	1.20	TAPD 42 BS
	1.6	3.2			6.0						TAPD 44 BS
	3.2	4.8			8.0						TAPD 46 BS
	4.8	6.4			9.7						TAPD 48 BS
	6.4	7.9			11.6						TAPD 410 BS
	7.9	9.5			13.4						TAPD 412 BS
	9.5	11.1			15.2						TAPD 414 BS
	11.1	12.7			17.0						TAPD 416 BS
	12.7	14.3			18.7						TAPD 418 BS
	14.3	16.7			20.3						TAPD 421 BS
	16.7	20.7			24.3						TAPD 425 BS

all dimensions in mm / en millimètre / alle Maße in mm / in millimetri / en milímetros

1) typical values / valeurs moyennes / typische Werte / Valori tipici / valores típicos