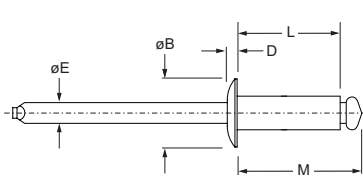


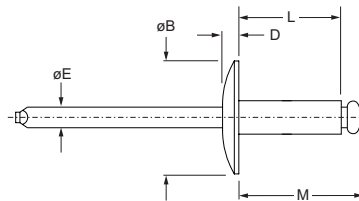


English	Français	Deutsch	Italiano	Español
Body: Aluminium* Natural	Corps: Aluminium* Brut	Hülse: Aluminium* Unbehandelt	Corpo: Alluminio* Nessuna finitura	Cuerpo: Aluminio* Natural
Body: Aluminium Natural	Corps: Aluminium Brut	Hülse: Aluminium Unbehandelt	Corpo: Alluminio Nessuna finitura	Cuerpo: Aluminio Natural



*: 5052



AD ■ ABS
Dome head
Tête bombée / Flachrundkopf /
Testa tonda / Cabeza alomada



AD ■ ABS LF
Large flange
Tête large / Flachrundkopf, extragroß /
Testa larga / Cabeza ala ancha

ø nom.					L ref.	M ref.	øE ref.	AD ■ ABS			AD ■ ABS LF			
	min.	max.	min.	max.				øB max.	D max.	Part No. ■	øB max.	D max.	Part No. ■	
2.4 (3/32")	0.8	3.2	2.46	2.54	5.7	8.3	1.5	5.1	0.9	32				
	3.2	6.4			8.9	11.4				34				
	6.4	9.5			12.1	14.6				36				
3.2 (1/8")	0.8	1.6	3.28	3.38	4.8	7.8	1.9	6.7	1.1	41	10.0	1.2		
	1.6	3.2			6.4	9.4				42				42
	3.2	4.8			8.0	11.0				43				43
	4.8	6.4			9.5	12.6				44				44
	6.4	7.9			11.1	14.2				45				
	7.9	9.5			12.7	15.7				46				46
	9.5	12.7			15.9	18.9				48				
	12.7	15.9			19.1	22.1				410				
4.0 (5/32")	1.6	3.2	4.06	4.17	7.0	10.5	2.4	8.4	1.2	52	12.4	1.9		
	3.2	4.8			8.6	12.1				53				
	4.8	6.4			10.2	13.7				54				54
	6.4	9.5			13.3	16.9				56				56
	9.5	12.7			16.5	20.1				58				58
4.8 (3/16")	1.6	3.2	4.88	4.98	7.6	11.7	2.9	10.0	1.4	62	16.6	2.2		
	3.2	6.4			10.8	14.9				64				64
	6.4	9.5			14.0	18.0				66				66
	9.5	12.7			17.1	21.2				68				68
	12.7	15.9			20.3	24.4				610				610
	15.9	19.1			23.5	27.6				612				612
	19.1	22.2			26.7	30.7				614				
	22.3	25.4			29.8	33.9				616				616

all dimensions in mm / en millimètre / alle Maße in mm / in millimetri / en milímetros