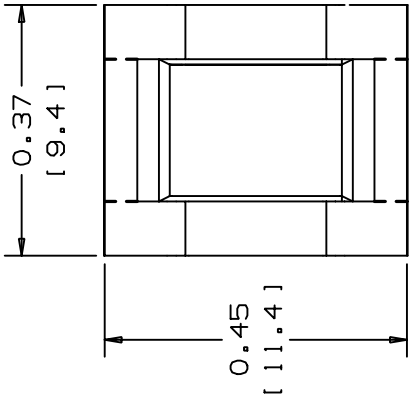
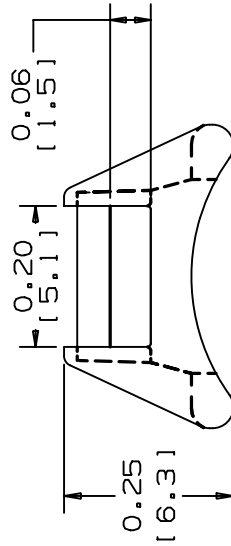


THIS COPY IS PROVIDED ON A RESTRICTED BASIS AND IS NOT TO BE USED IN ANY WAY DETRIMENTAL TO THE INTERESTS OF PANDUIT CORP.



PANDUIT PART NUMBER*	USE WITH ANY OF THESE CABLE TIE CROSS-SECTIONS	RECOMMENDED MAXIMUM BUNDLE DIA.	WEIGHT lbs/100 pcs (g)/100 pcs
CSCS	MINIATURE INTERMEDIATE STANDARD	0.625 (15.9)	0.05 (1.22)



NOTES:

\*1. SEE CURRENT PRICE SHEET FOR PART NUMBER SUFFIX DESIGNATION FOR PACKAGE SIZE.

DIMENSIONS IN BRACKETS ARE METRIC [ mm ]

CAD FILENAME/LAYERS G00239DH\_PB\_CSCS\_02

**PANDUIT** CORP. TINLEY PARK, ILLINOIS

CSCS  
CABLE SPACER CROSS STANDARD

UNLESS OTHERWISE SPECIFIED, DIMENSIONAL TOLERANCES ARE:  
(.X) ±0.05 (1.3) (.XXX) ±0.010 (0.25)  
(.XX) ±0.02 (0.5) ANGLES ±5.

UNLESS OTHERWISE SPECIFIED, ALL DIMENSIONS ARE GIVEN IN INCHES, THIRD ANGLE PROJECTION.

SCALE 4/1

DRAWN BY C.J.G. MAT'L:

DATE 6/13/96

NYLON 6/6

DRAWING NO.

GBO239DH

DWG  
A  
SIZE

REV	DATE	BY	CHK	DESCRIPTION	ECN	R	CUST	SUP
2	11-4-05	TMSA		REVISED LENGTH & WIDTH DIMENSIONS	GBO239DH	2		
1	6/18/01	LGG		UPDATED DRAWING FOR WEB	GBO239DH	1		
R	6/13/96	C.J.G.		INITIAL RELEASE	GBO239DH	R		