

Series 15

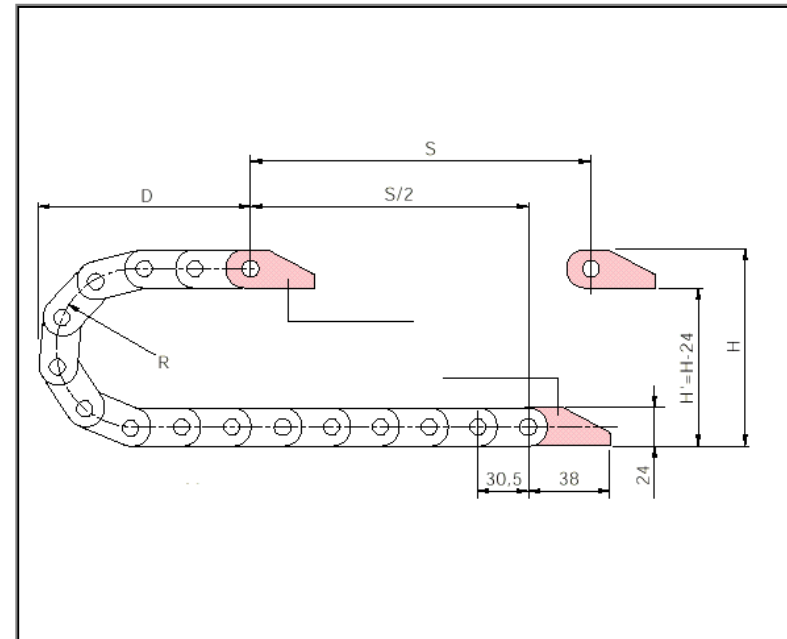


Installation dimensions

R	H*	D	K
038	100	090	185
048	120	120	215
075	175	145	300
100	225	155	375
110	245	170	410
125	275	190	455
145	315	225	520
180	385	a. A.	630

* The required installation clearance is $HF = H + 20 \text{ mm}$ (in the case of 1 kg/m additional load)
If extremely restricted space is available, please consult us.

Installation dimensions Series 15 'Zipper'



Pitch: 30,5 mm per link
Links per m: 33
Travel: S
Chain length = $S/2 + K$

Series 15

Overview

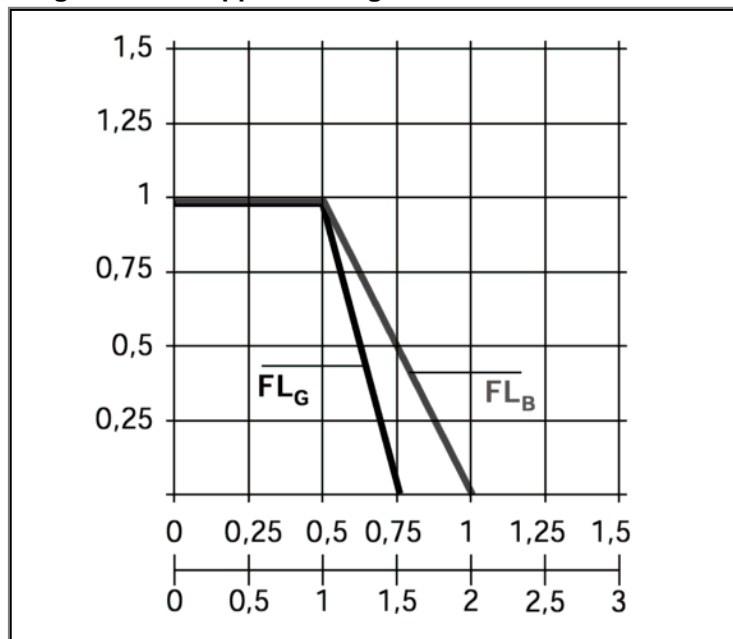


1. Small divisions for smooth operation (33 links/m)

Series 15



Diagram of unsupported length



Dependency of the unsupported length on the additional load

X axis: Unsupported length in m FLB/FLG

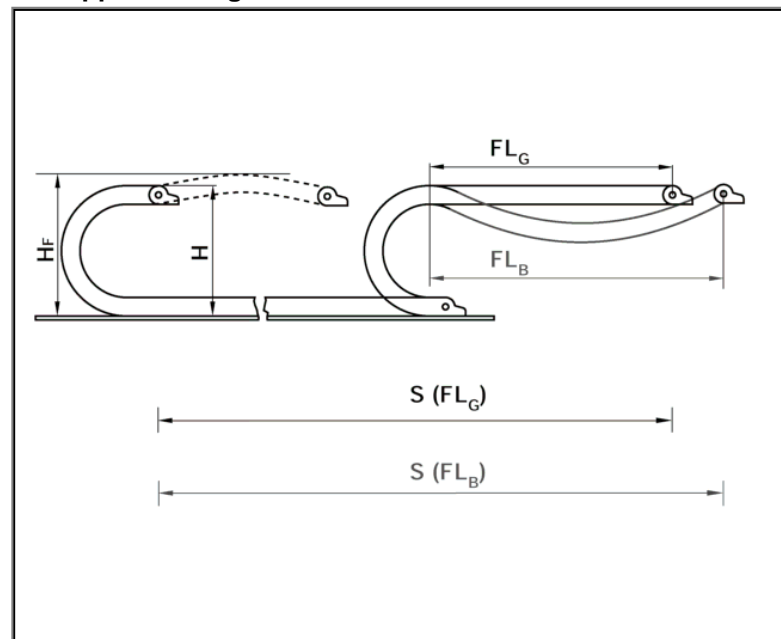
Y axis: Additional load in kg/m

Lower scale: Length of travel S in m

FLB = unsupported with permissible sag

FLG = unsupported with straight upper run

Unsupported length



FLB = unsupported with permissible sag

FLG = unsupported with straight upper run

S = travel

H = Nominal installation height

HF = required installation height (refer to 'Installation dimensions')

Series 15



Technical specifications

Chain type	Weight per link (g)	Weight per metre (kg)
15.1	~ 10	~0,35
15.2	~ 12	~0,40
15.3	~ 14	~0,46
15.4	~16	~0,52

Technical specifications

The following applies to all types listed here:

Material	igumid G
Perm. Temperature °C	-40/+130
Gliding speed max. m/s	3
Unsupported V max. m/s	10
Flammability class	VDE 0304 IIC UL94HB