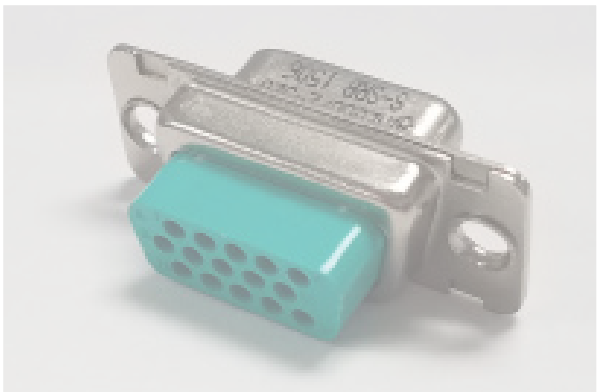
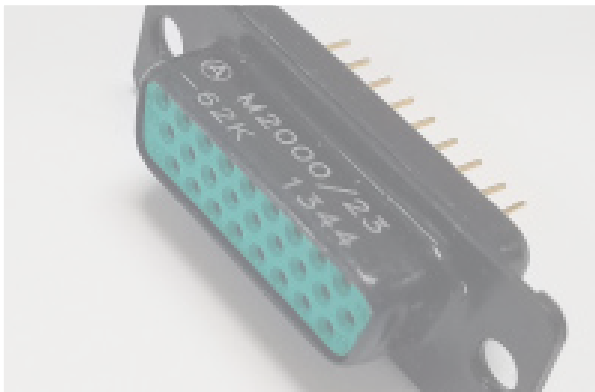
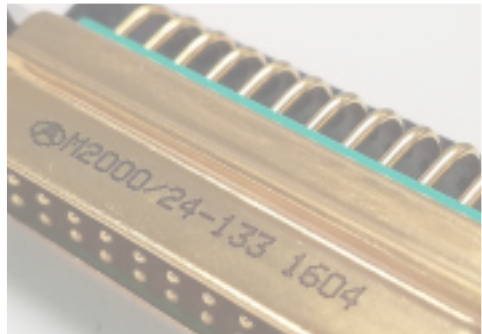


D-SUB CONNECTORS
GUIDE 2018



TECHNICAL SPECIFICATIONS

M2000-QPL-Crimp Version

	Characteristics	Standard	High Density
Material	Shell	Steel / Brass	Steel / Brass
	Insulator	Thermoset/Thermoplast	Thermoset/Thermoplast
	Contact	Copper Alloy	Copper Alloy
Finish	Shell	Cadmium, Nickel, Gold	Cadmium, Nickel, Gold
	Contact	Gold Over Nickel	Gold Over Nickel
Electrical	Contact Rating	7.5A Max	7.5A Max
	Test Voltage-Max	1000 Vrms	1000 Vrms
	Insulation Resistance	> 5000 m Ohm	> 5000 m Ohm
	Contact Resistance	7.3m Ohm	7.3m Ohm
Mechanical	Insertion/Removal Force	5N Max	5N Max
	Durability	500 Cycles	500 Cycles
	Wire Gauge	AWG 20 - 28	AWG 22 - 28
Environmental	Temperature	- 55 Deg C to + 125 Deg C	- 55 Deg C to + 125 Deg C
	Salt Spray	48 Hrs	48 Hrs
	Damp Heat	10 Days	10 Days

ORDERING INFORMATION

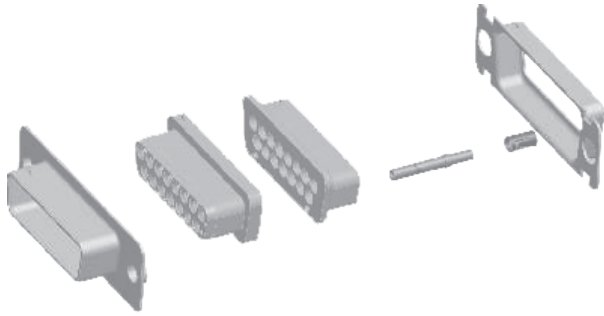
A	M	2000	/2	XXX
Manufacturers Logo	Military Designation	Specification Sheet Number (Class)	Connector Type	Connector Class

Connector Type

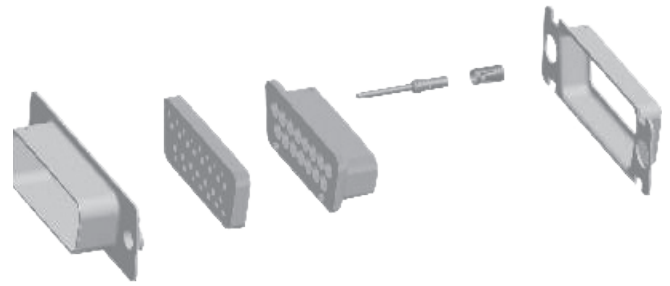
- 2: Receptacle Connector with Polarized Shell & Socket Crimp contact.
- 4: Plug Connector with Polarized Shell & Pin Crimp Contact.
- 6: Receptacle Connector with Polarized Shell with Socket Crimp Contact (Non-Magnetic)
- 8: Plug Connector with Polarized shell & Pin Crimp Contact (Non-Magnetic)

ASSEMBLIES & ARRANGEMENTS

Receptacle Assembly Exploded View

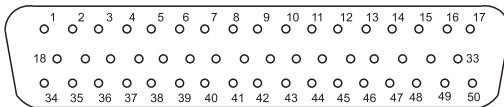
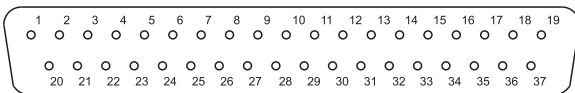
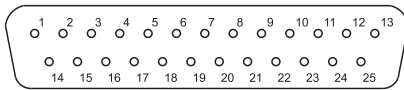
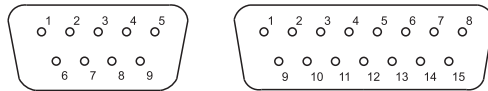


Plug Assembly Exploded View

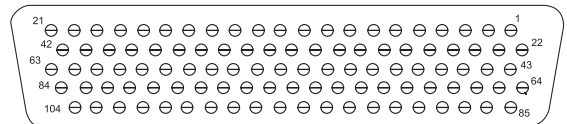
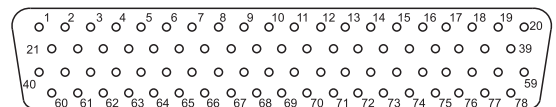
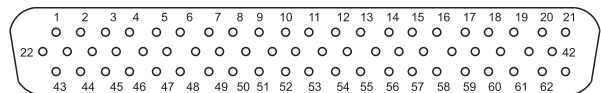
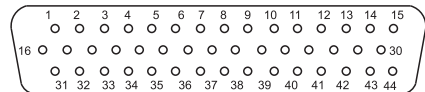
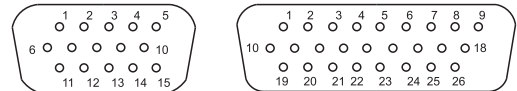


Insert Arrangement for Standard D Sub Connectors

Standard D Sub Connectors

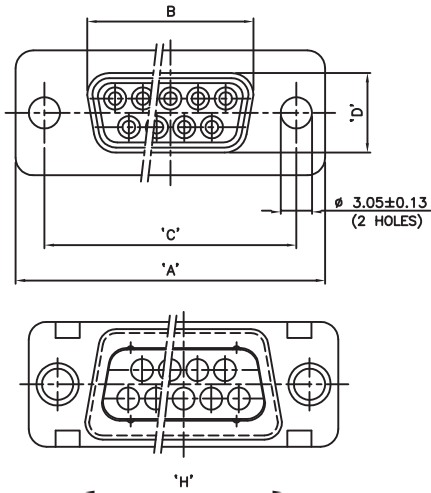


High Density D Sub Connectors

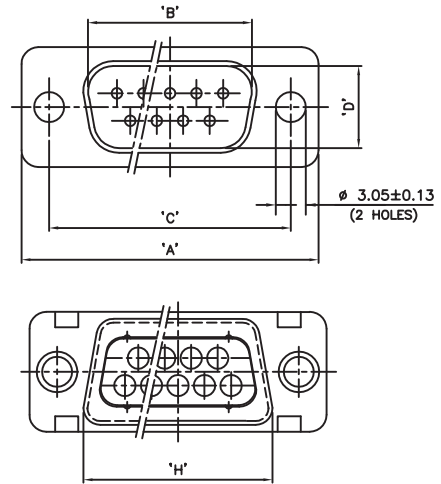


POLARIZED SHELL & SOCKET CRIMP CONTACT

Receptacle

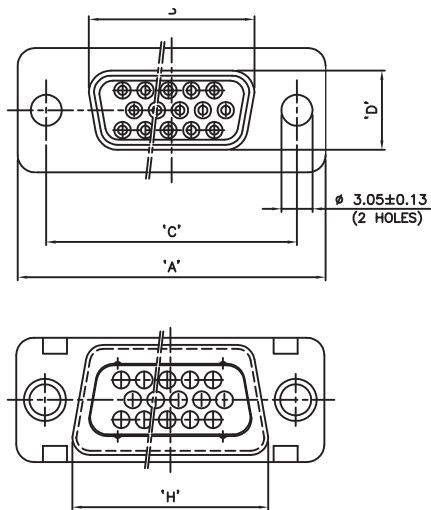


Plug

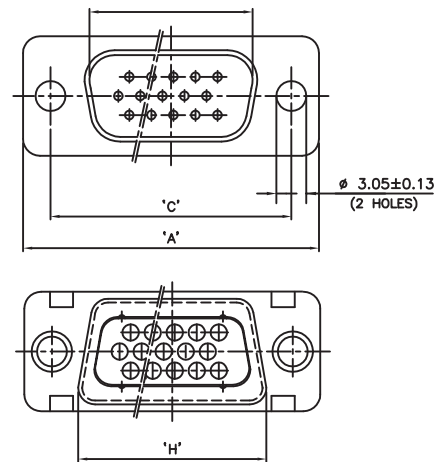


POLARIZED SHELL & PIN CRIMP CONTACT-HIGH DENSITY

Receptacle



Plug



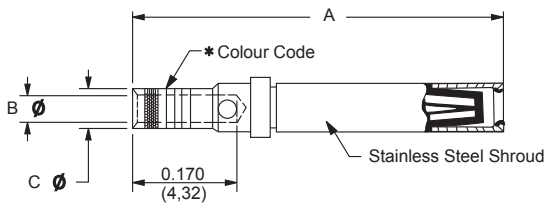
CONTACT INFORMATION

Standard D Sub

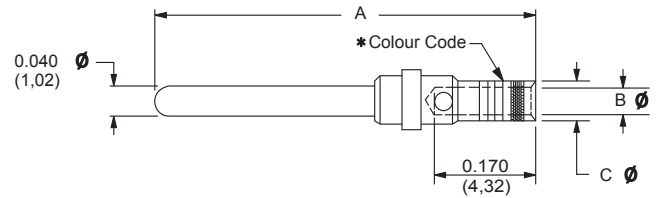
Crimp Contacts-Closed crimp barrel

	Female	Male
Material	Copper Alloy	Brass
Plating	Gold flash over nickel or 0.000050 inch (1,25) gold over copper for military specification contacts	
Color Code	Orange / Blue / Grey for military specification contacts	Orange / Blue / White for military specification contacts

Female Contact



Male Contact

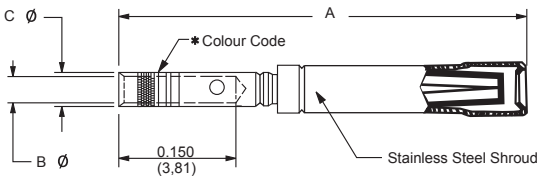


High Density D-Sub

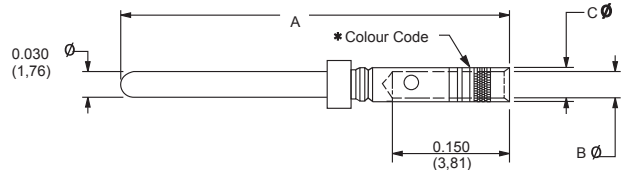
Crimp Contacts-Closed crimp barrel

	Female	Male
Material	Copper Alloy	Brass
Plating	Gold flash over nickel or 0.000050 inch (1,25) gold over copper for military specification contacts	
Color Code	Orange/Green/Yellow for military specification contacts	Orange / Blue / Black for military specification contacts

Female Contact



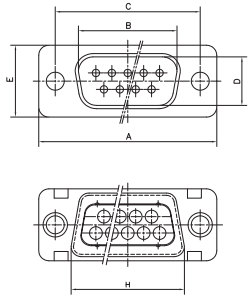
Male Contact



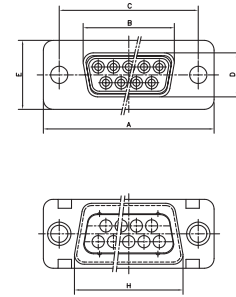
SPECIAL PRODUCTS

Solder Type Standard D-Sub Connector (Non Environmental)

M2000 /3
Plug w/ Solder Contact

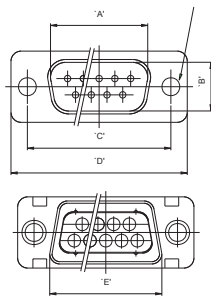


M2000 /1
Receptacles w/ Solder Contact

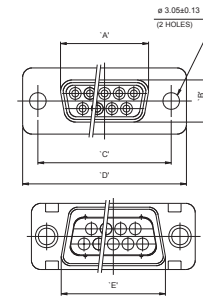


Standard D Sub Grommet Type Connector (Crimp Type Contact)

MM2000 /4
Plug w/ Pin Contact (w/ Grommet) - Rear Removable

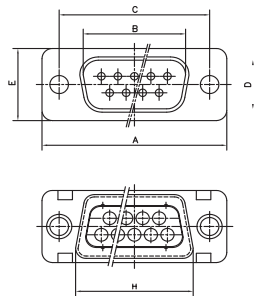


M2000 /2
Receptacle w/ Socket Contact (w/ Grommet)-Rear Removable

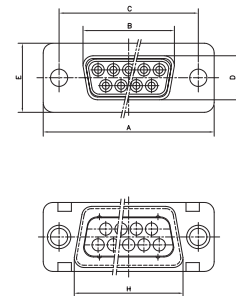


D Sub Connector (Straight PC Tail Type)

M2000 /24
Plug w/ Straight PC Tail Pin Contact

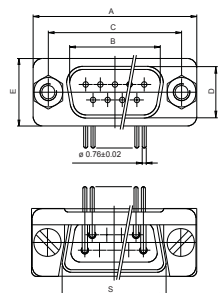


M2000 /23
Receptacle w/ Straight PC Tail Socket Contact

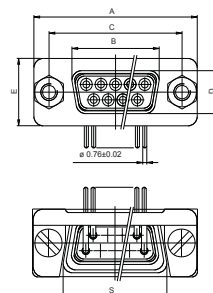


Standard D Sub Connector (Right Angle PC Tail Contact)

M2000 /24
Plug w/ Pin Contact, Right Angle PC Tail Contact



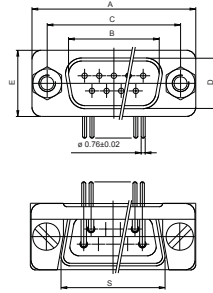
M2000 /23
Receptacle w/ Socket Contact, Right Angle PC Tail Contact



Standard D Sub Connector (Right Angle PC Tail Contact w/ Extra PC Tail Length)

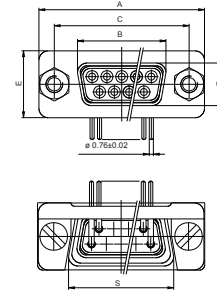
M2000 /24

Plug w/ Pin Contact, Right Angle PC Tail



M2000 /23

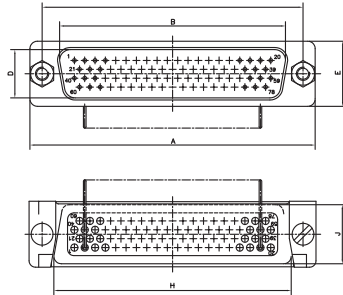
Receptacle w/ Socket Contact, Right Angle PC Tail



High Density D Sub Connector (Right Angle PC Tail Contact)

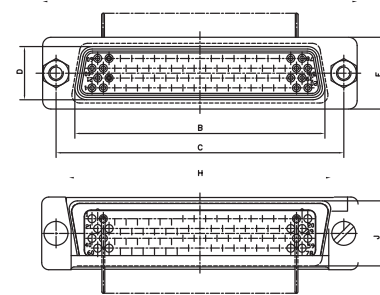
M2000 /24

Plug w/ Pin Contact



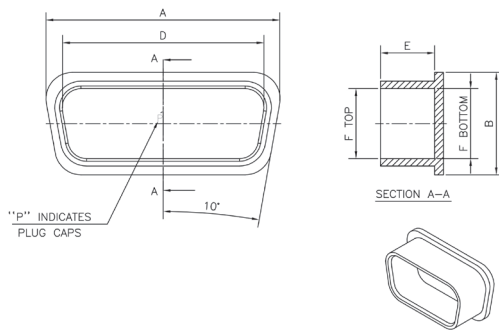
M2000 /23

Receptacles w/ Socket Contact

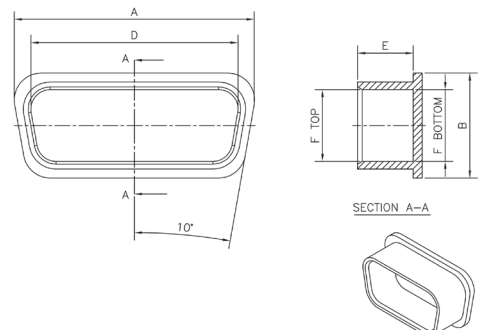


Dust Cover

Plug



Plastic Dust Cap Receptacles



AMPHENOL PCD PRODUCTS



BACKSHELLS



CABLE SOLUTIONS



CIRCULAR



GROUND BLOCKS



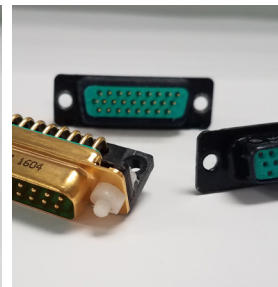
LUMINUS



MILITARY AUDIO/POWER



PEGASUS SERIES



RECTANGULAR



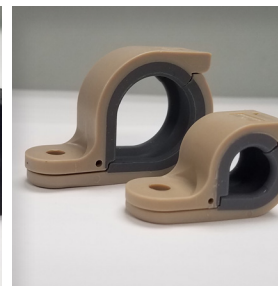
RUGGED SOLUTIONS



SIM



SOLARIS



SYSTEM ATTACHMENTS

Amphenol Pcd

www.amphenolpcd.com