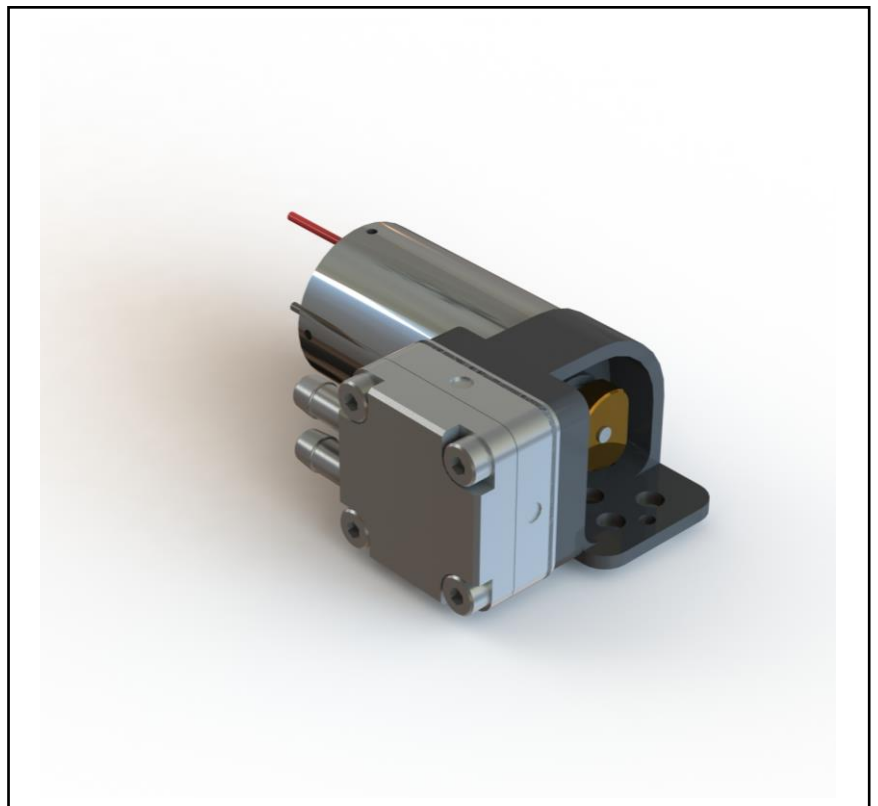


## Features

- Variable flow rate and low power consumption
- Small size only 39x28x17mm
- Useable with solar power, PSU or batteries
- Wide range of chemical resistance
- Light weight 46g

## RS PRO GAS COMPRESSOR PUMP

RS Stock No.: 817-0725



RS PRO is the own brand of RS. The RS PRO Seal of Approval is your assurance of professional quality, a guarantee that every part is rigorously tested, inspected, and audited against demanding standards. Making RS PRO the Smart Choice for our customers.

## Product Description

Available in two versions, using either a super-efficient 'coreless' DC motor or a long life 'brushless' motor that has its own inbuilt brushless controller it is an ideal fuel pump in any application where size and weight are your key criteria. The D260-LF series range of pumps are constructed from CNC machined 316 stainless steel with stainless steel fittings. They are fitted with a FKM diaphragm and 316 stainless steel valves enabling this pump range to resist most fuels, chemicals and solvents. The pump uses efficient hose barb connectors designed for 2.4mm ID semi-flexible tubing.

The D260-LF-VSS is suitable for applications such as : Fuel pumps, Analysis systems, Cooling systems, Precision flow, Battery + Solar operated systems.

## General Specifications

|                         |                                    |
|-------------------------|------------------------------------|
| Type                    | Gas Compressor Pump/Fuel pump      |
| Maximum Flow Rate       | 105ml/min (liquid) 350ml/min (air) |
| Input Connection        | 3.6mm Hose barb connector          |
| Input Connection Size   | 2.4mm ID semi-flexible tubing      |
| Output Connection Size  | 2.4mm ID semi-flexible tubing      |
| Maximum Vacuum/Pressure | -500/700 mBar (air)                |
| Wetted Materials        | 316 Stainless steel, FKM           |
| Coupling Type           | Direct drive                       |
| Head Type               | Single                             |
| Noise Level             | <50dB measured 1m from pump.       |
| Auto On/Off Switch      | No                                 |

## Mechanical Specifications

|            |            |
|------------|------------|
| Dimensions | 17x28x39mm |
| Weight     | 46g        |

## Electrical Specifications

|                |   |
|----------------|---|
| Connection     | Stripped wires (DC)                           |
| Supply Voltage | 2-4.5v  |
| Input Power    | 1.8-2.3W (@4.5V liquid) 0.4-0.6W (@ 4.5V air) |

## Protection Category

|                       |       |
|-----------------------|-------|
| Safety Category Level | S1    |
| IP Rating             | IP 41 |

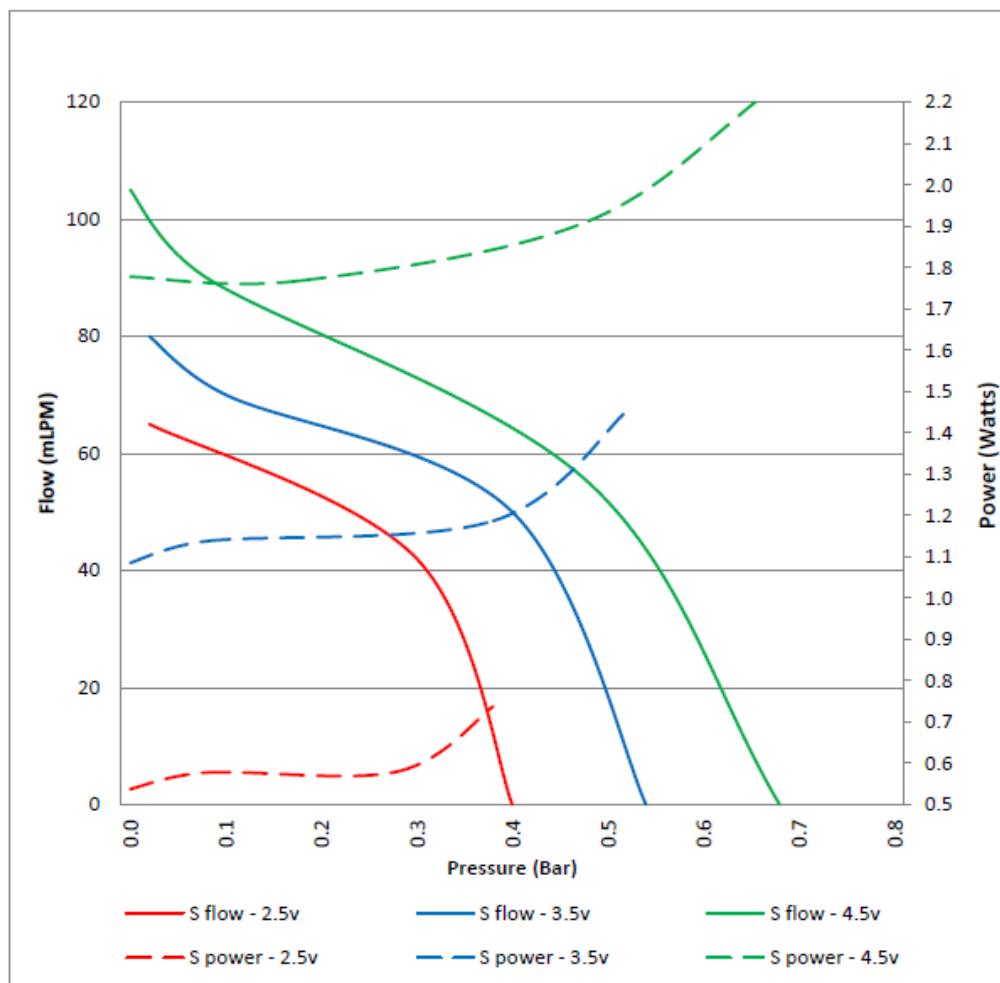
## Approvals

|                           |   |
|---------------------------|---|
| Compliance/Certifications | ISO 9001 Quality Control Standard   |
| Declarations              | TCS Declaration of Conformity - RoHS Directive 2011/65/EU, SVCH, CMRT, 3TG and REACH compliant. |

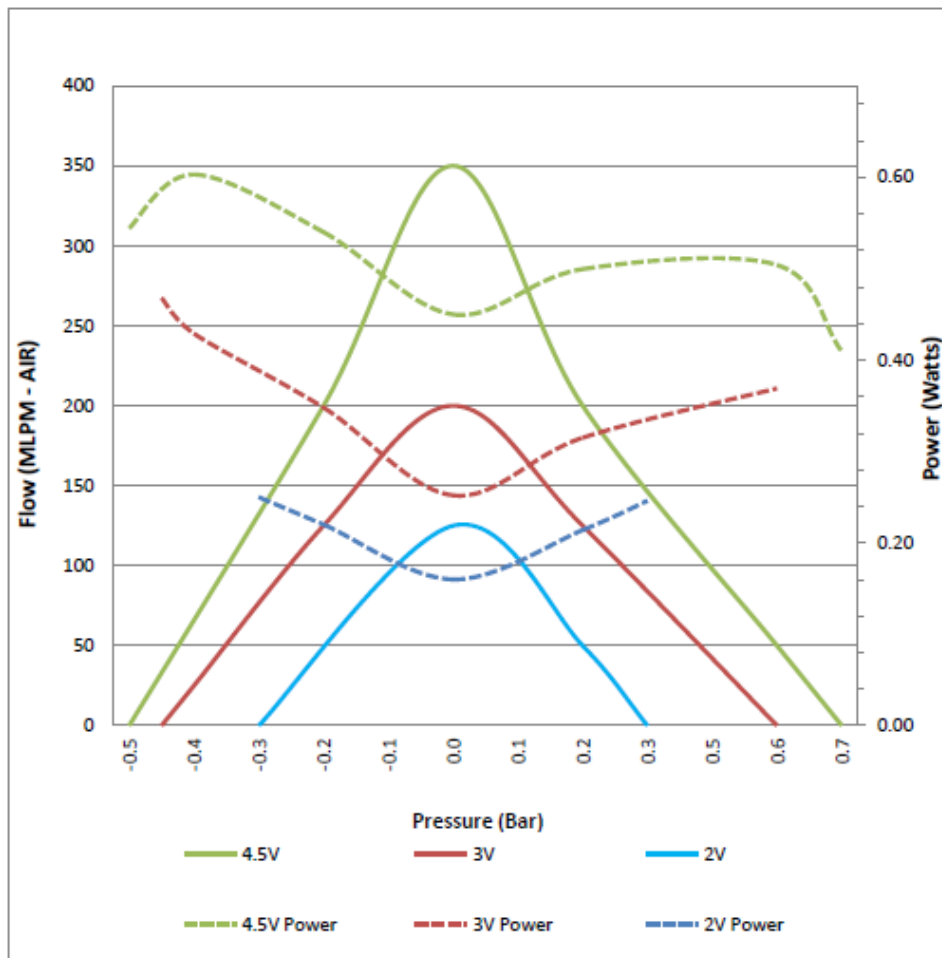
## Similar Products

| Stock No. | Brand  | Maximum Flow Rate | Input Connection | Input Power |
|-----------|--------|-------------------|------------------|-------------|
| 702-6898  | RS PRO | 400ml/min (air)   | DC               | 2-4.5V      |
| 817-0716  | RS PRO | 400ml/min (air)   | DC               | 3-6V        |
| 817-0728  | RS PRO | 75ml/min (liquid) | DC               | 3-6V        |

Performance data of D260S-LF-VSS conducted on deionised water.



Performance data of D260S-LF-VSS conducted on air.



CONNECTORS TO SUIT 2.4MM ID FLEXIBLE TUBING

