

01

0131

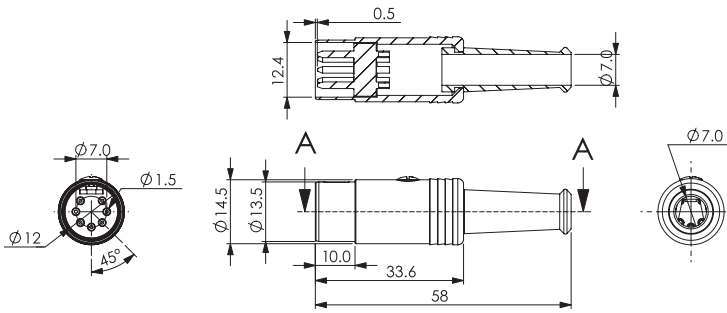
DIN circular connectors



DIN plug, straight version, shielded, with metal housing,  
bend protection and solder terminals

01

0131



**Environmental conditions**

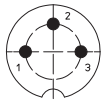
Temperature range -25 °C/+80 °C

**Materials**

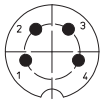
Insulating body	PA, V-0 according to UL94
Contact pin	CuZn, silver-plated
Strain relief	steel, nickel-plated
Housing	CuZn, nickel-plated
Bend protection sleeve	PVC
Screw	steel, nickel-plated

**Pin configurations, solder side view**

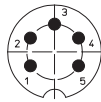
DIN 41524



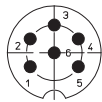
DIN 41524



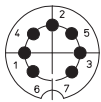
DIN 45322



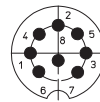
DIN 45322



DIN 45329



DIN 45326



0131 06

0131 07-1

0131 08-1

**Mechanical data**

Mating cycles

**Connectable conductors for solder area**

Section ≤ AWG 19 (0.65 mm<sup>2</sup>)  
Cable diameter ≤ 7,0 mm

**Electrical data (at T<sub>amb</sub> 20 °C)**

Rated current 4 A  
Rated voltage 100 V AC  
Rated impulse voltage 250 V AC RMS/60 s  
Insulation resistance ≥ 100 MΩ

**Associated products**

Counterparts  
 ☞ 0103 ☞ 0105 ☞ 010599  
 ☞ 0107 ☞ 0121 ☞ 0122

01

0131

Designation	Pole Number	PU (Pieces)	MDQ (Pieces)
0131 03	3	50	150
0131 04	4	50	150
0131 05	5	50	150
0131 05-1	5	50	150
0131 06	6	50	150
0131 07-1	7	50	150
0131 08-1	8	50	150

**Packaging:**

in individual plastic bags, in a cardboard box