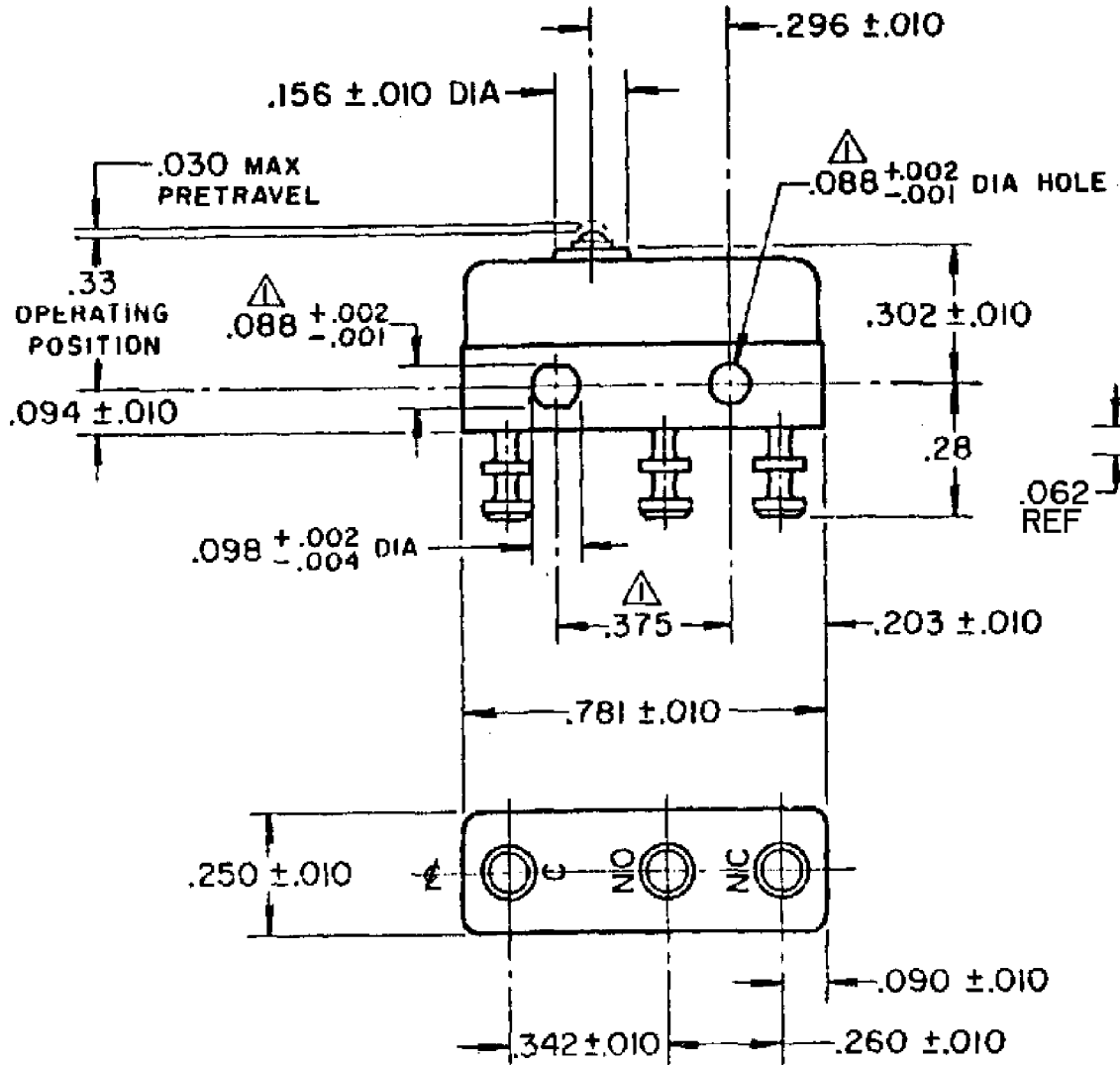
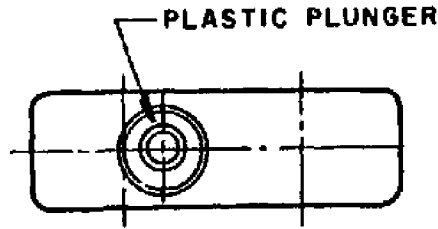


HONEYWELL PART NUMBER
41SM1-T2
PRODUCT CODE TYC0180



CHARACTERISTICS

OPERATING FORCE	3 - 5 OZ
RELEASE FORCE	1 OZ MIN
DIFFERENTIAL TRAVEL	.004 MAX
OVERTRAVEL	.005 MIN

ELECTRICAL DATA

CONTACT ARRANGEMENT		SPDT	
APPROVALS	KEMA, CE	11A 250V ~ T85 1E4 5A 30 Vdc T85 1E4	
	UL, CSA	11A 1/4 HP 125 250 VAC 5A 30 VDC 1/2 A 125 VDC	BRAND L212

DESIGN UNITS: INCH
TOLERANCES UNLESS NOTED:

NO PLACE	X	±
ONE PLACE	.X	±
TWO PLACE	.XX	±
THREE PLACE	.XXX	±
FOUR PLACE	.XXXX	±
ANGLES		±

THIRD ANGLE PROJ.