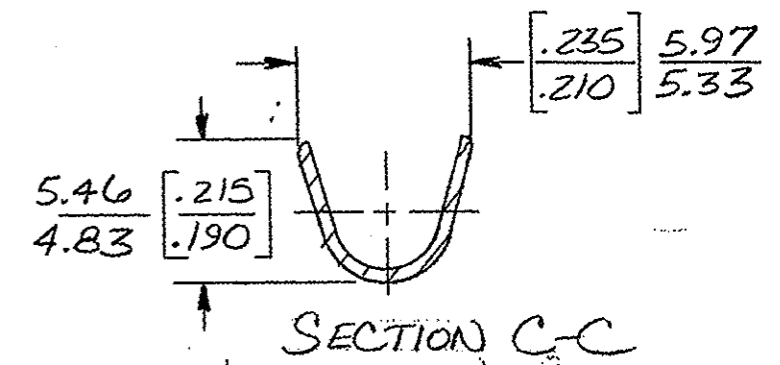
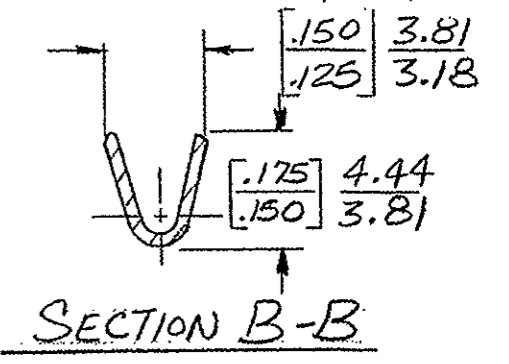
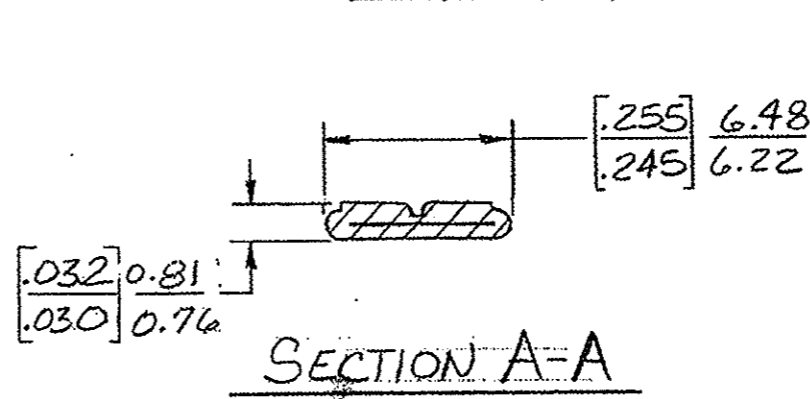
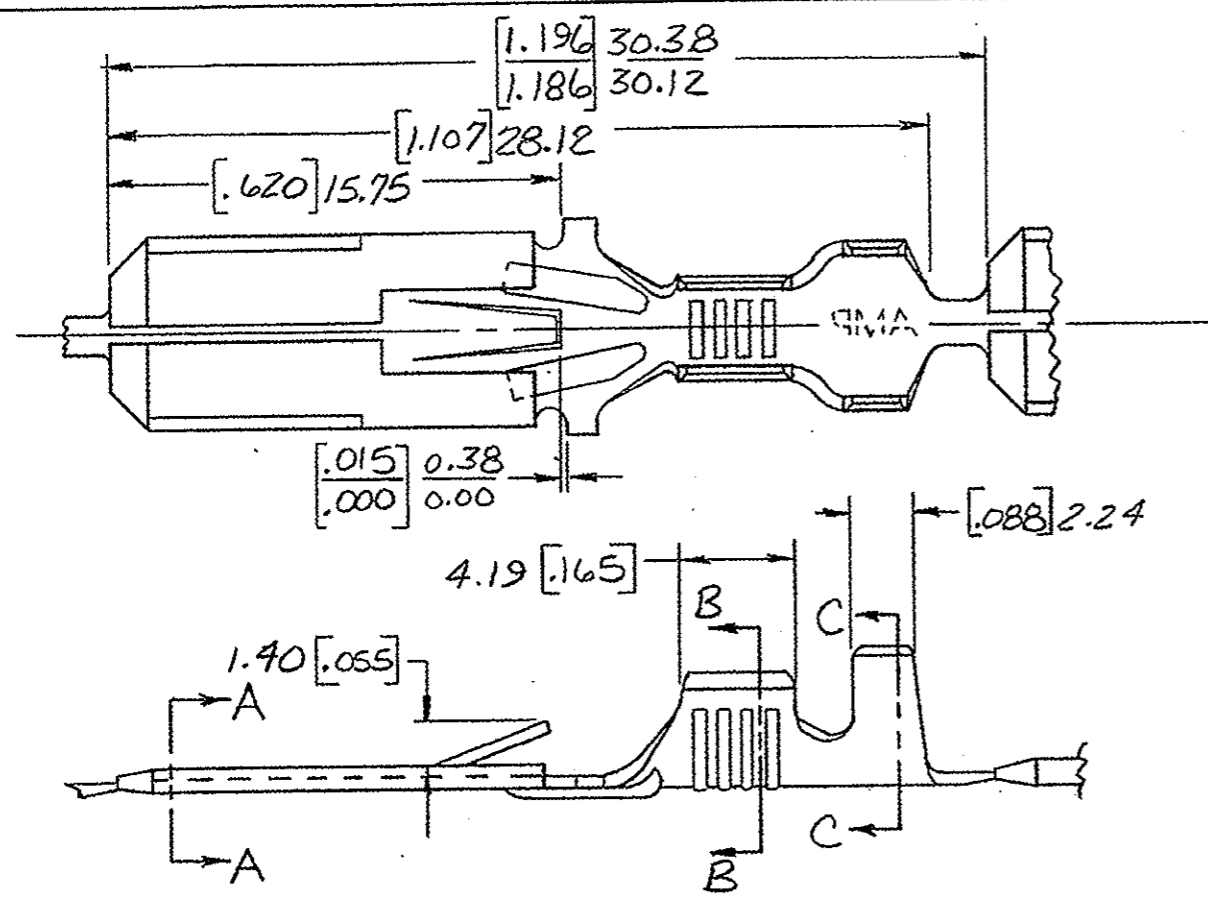


THIS DRAWING IS UNPUBLISHED. RELEASED FOR PUBLICATION, 19
 © COPYRIGHT 19 BY AMP INCORPORATED, HARRISBURG, PA. ALL INTERNATIONAL RIGHTS RESERVED. AMP PRODUCTS MAY BE COVERED BY U.S. AND FOREIGN PATENTS AND/OR PATENTS PENDING.

REVISIONS						
P	F	ZONE	LTR	DESCRIPTION	DATE	APPROVED
✓	✓		AN	REV AF-2585 & AF-2586	4-21-88	MSF
✓	✓		AP	REVISED AF-5658	11/14/88	MSF/CM
✓	✓		AR	ADDED - B AF-6009	3/14/89	MSF/CM
			AS	OBSOLETE AF-8092	8/19/92	MSF
			AT	REACTIVATED - 6 PER OG3A-0431-02	7-29-02	MSF/
			DG	P/N 42098-2 NOW IN PRE-TIN, E R-07-012321	21 SEP 02	HY



FINISH	MATERIAL	INSULATION RANGE	WIRE SIZE	PART NO
OBSOLETE	TIN	[.0150] 0.38 BRASS	[.120-.160] 3.05-4.06	18-14 0.8-2mm² 42098-8
	TIN	[.0150] 0.38 PHOS. BRZ.	[.120-.160] 3.05-4.06	18-14 0.8-2mm ² 42098-7
	PRE-TIN	[.0150] 0.38 BRASS	[.120-.160] 3.05-4.06	18-14 0.8-2mm ² 42098-6
OBSOLETE	NONE	[.0150] 0.38 PHOS. BRZ.	[.120-.160] 3.05-4.06	18-14 0.8-2mm² 42098-5
OBSOLETE	NICKEL	[.015] 0.38 PHOS. BRZ.	[.120-.160] 3.05-4.06	18-14 0.8-2mm² 42098-4
	SILVER	[.0150] 0.38 BRASS	[.120-.160] 3.05-4.06	18-14 0.8-2mm ² 42098-3
	PRE-TIN	[.0150] 0.38 BRASS	[.120-.160] 3.05-4.06	18-14 0.8-2mm ² 42098-2
	NONE	[.0150] 0.38 BRASS	[.120-.160] 3.05-4.06	18-14 0.8-2mm ² 42098-1

- 1 - DIM'S. IN BRACKETS ARE IN INCHES.
- 2 - CONTINUOUS STRIP ON REELS.
- 3 - FOREIGN PRODUCTION ONLY
- 4 - PAPER INTERLAY BETWEEN LAYERS

METRIC

UNLESS OTHERWISE SPECIFIED DIMENSIONS ARE IN INCHES. TOLERANCES ON: DECIMALS [±.015] 0.38 ANGLES	CONTRACT NO	AMP INCORPORATED Harrisburg, Pa.	
MATERIAL	DR <i>NR Rott</i> 2-25-83	NAME 250 SERIES FASTIN-FASTON TAB	
FINISH	CHK <i>G. Yetter</i> 3-1-83	SIZE B	FSCM NO 00779
	APPR <i>J. Liberman</i> 4/22/83	DRAWING NO 42098	
	APPR <i>V. Kondrasov</i> 4/21/83	SCALE	SHEET
	DSGN APPD	OTHER APPD	