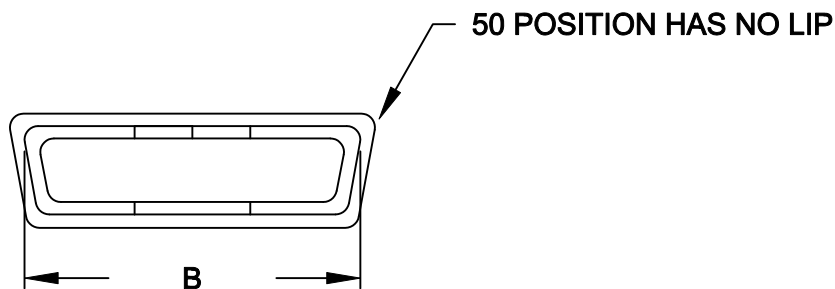
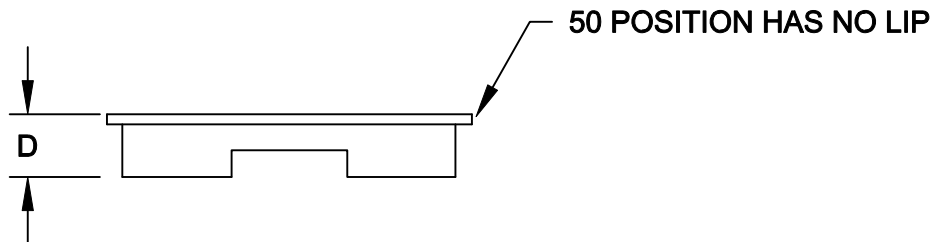
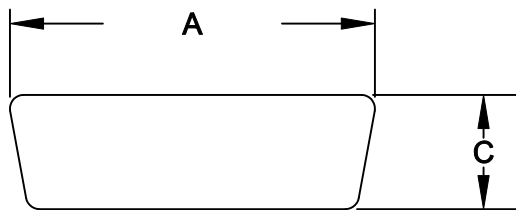


DESCRIPTION: DUST COVER MALE

DIMENSIONS

	A	B	C	D
9	.963	.843	.580	.262
	24.45	21.40	14.72	6.65
15	1.293	1.19	.580	.262
	32.85	30.19	14.72	6.65
25	1.822	1.71	.580	.262
	46.28	43.44	14.72	6.65
37	2.480	2.367	.591	.276
	63.00	60.1	15.00	7.00
50	2.264	2.264	.559	.319
	57.51	57.51	14.19	8.10



PART NUMBER

09	160-000-109R000
15	160-000-115R000
25	160-000-125R000
37	160-000-137R000
50	160-000-150R000

MATERIAL:  
 PLASTIC: PE, UL94HB  
 RoHS COMPLIANT



THESE DRAWINGS AND SPECIFICATIONS ARE THE PROPERTY OF NorComp AND SHALL NOT BE REPRODUCED, COPIED OR USED AS THE BASIS FOR THE MANUFACTURE OF SALE OF APPARATUS WITHOUT WRITTEN PERMISSION.

DRAWN:  
**PAM JENKINS**

DATE:  
**12-05-05**

CHECKED:

DATE:

**NorComp**

SCALE: SHEET **1** OF **1** REV **2**

DWG NO. **160-000-1YYR000**

# Mouser Electronics

Authorized Distributor

Click to View Pricing, Inventory, Delivery & Lifecycle Information:

[NorComp:](#)

[160-000-125R000](#) [160-000-109R000](#) [160-000-115R000](#) [160-000-137R000](#) [160-000-150R000](#)