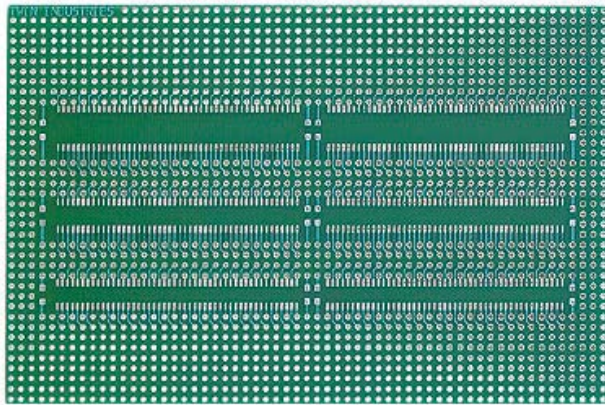




Twin Industries SMT adapter boards allow for easy prototyping and evaluation of fine-pitch SMT/SMD components and connectors. All pads breakout to dedicated plated holes. Ground plane on reverse side. Plated hole diameter=0.037".

FEATURES:

- Boards made with FR4 laminate, 0.062" thick
- Solder plating over copper
- Prototyping holes spaced on a 0.1" x 0.1" grid
- Supports SOIC packages

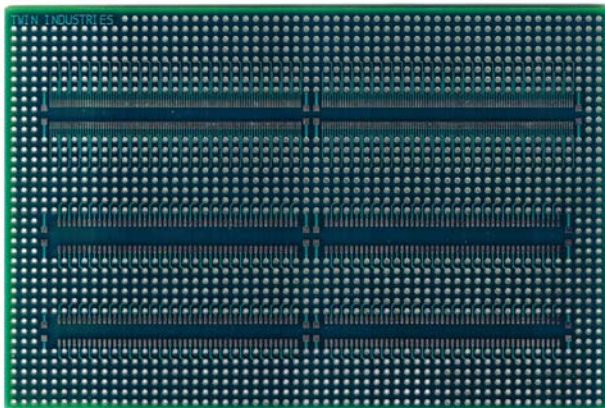


PART NUMBER

8100-SMT4

SOIC med, wide, plastic (0.050" spacing)

Board size: 4.0" x 6.0"



PART NUMBER

8100-SMT8

SOIC med, metric (0.050") & tiny
(0.025") spacing

Board size: 4.0" x 6.0"