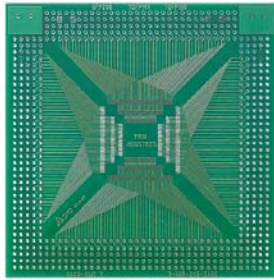




Twin Industries SMT adapter boards allow for easy prototyping and evaluation of fine-pitch SMT/SMD components and connectors. All pads breakout to dedicated plated holes. Ground plane on reverse side. Plated hole diameter=0.037".

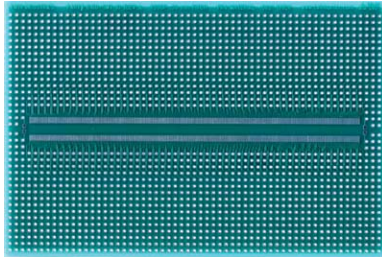
FEATURES:

- Boards made with FR4 laminate, 0.062" thick
- Solder plating over copper
- Prototyping holes spaced on a 0.1" x 0.1" grid
- Supports popular packages



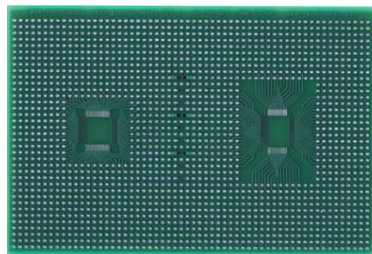
PART NUMBER- 8100-SMT7

QFP208, TQFP144, TQFP100, QFP240, TQFP128
(0.020" spacing)- Board size: 4.2" x 4.2"



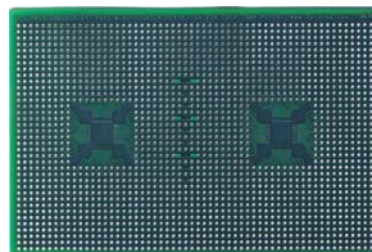
PART NUMBER- 8100-SMT10

TQFP Packages 0.50mm Pitch-Board dim: 6.0"x4.0"



PART NUMBER- 8100-SMT11

80 pin QFP Packages 0.50mm Pitch-Board dim: 6.0"x4.0"



PART NUMBER- 8100-SMT14

64 pin TQFP Packages 0.50mm Pitch-Board
dim: 6.0"x4.0"

For additional product information, please visit www.twinind.com

Contact information: 925-866-8946 (phone) 925-866-8947 (fax) Sales@twinind.com