

# PTFIX 18X2,5-G OG - Distribution block



3273456

<https://www.phoenixcontact.com/us/products/3273456>

Please be informed that the data shown in this PDF document is generated from our online catalog. Please find the complete data in the user documentation. Our general terms of use for downloads are valid.



Distribution block, Basic terminal block, nom. voltage: 450 V, nominal current: 24 A, number of connections: 18, connection method: Push-in connection, cross section: 0.14 mm<sup>2</sup> - 4 mm<sup>2</sup>, mounting type: adhesive, color: orange

## Your advantages

- Flexible use, thanks to DIN rail mounting, direct mounting or adhesive mounting
- Clear wiring, thanks to eleven different color variants
- Time-saving conductor connection, thanks to tool-free Push-in direct connection technology
- Time savings of up to 80 %, thanks to ready-to-mount blocks without manual bridging
- Space savings of up to 50 % on the DIN rail, thanks to transverse mounting

## Commercial data

|                                      |                     |
|--------------------------------------|---------------------|
| Item number                          | 3273456             |
| Packing unit                         | 1 pc                |
| Minimum order quantity               | 8 pc                |
| Sales key                            | BE09                |
| Product key                          | BEA115              |
| Catalog page                         | Page 440 (C-1-2019) |
| GTIN                                 | 4055626393032       |
| Weight per piece (including packing) | 34.53 g             |
| Weight per piece (excluding packing) | 34.53 g             |
| Customs tariff number                | 85369010            |
| Country of origin                    | PL                  |

# PTFIX 18X2,5-G OG - Distribution block



3273456

<https://www.phoenixcontact.com/us/products/3273456>

## Technical data

### Notes

|         |  |
|---------|--|
| General | the blocks can be bridged with one another via the conductor shaft, for corresponding plug-in bridges, see accessories |
|---------|--|

### General

|      |  |
|------|--|
| Note | The maximum load current of a single clamping unit must not be exceeded. |
|------|--|

### Product properties

|                       |                            |
|-----------------------|----------------------------|
| Product type          | Distributor terminal block |
| Number of connections | 18                         |
| Number of rows        | 1                          |
| Potentials            | 1                          |

### Insulation characteristics

|                      |     |
|----------------------|-----|
| Overvoltage category | III |
| Degree of pollution  | 3   |

### Electrical properties

|   |        |
|---|--------|
| Rated surge voltage                             | 6 kV   |
| Maximum power dissipation for nominal condition | 0.77 W |

### Connection data

|   |  |
|---|--|
| Number of connections per level                                   | 18   |
| Nominal cross section   | 2.5 mm <sup>2</sup>                          |
| Rated cross section AWG   | 12   |
| Stripping length  | 8 mm ... 10 mm                               |
| Internal cylindrical gage   | A3   |
| Connection in acc. with standard                                  | IEC 60998-2-2                                |
| Conductor cross section rigid                                     | 0.14 mm <sup>2</sup> ... 4 mm <sup>2</sup>   |
| Cross section AWG   | 26 ... 12 (converted acc. to IEC)            |
| Conductor cross section flexible                                  | 0.14 mm <sup>2</sup> ... 2.5 mm <sup>2</sup> |
| Conductor cross section, flexible [AWG]                           | 26 ... 14 (converted acc. to IEC)            |
| Conductor cross-section flexible (ferrule without plastic sleeve) | 0.14 mm <sup>2</sup> ... 2.5 mm <sup>2</sup> |
| Flexible conductor cross section (ferrule with plastic sleeve)    | 0.14 mm <sup>2</sup> ... 2.5 mm <sup>2</sup> |
| Nominal current   | 24 A   |
| Maximum load current  | 32 A   |
| Maximum total current   | 48 A   |
| Nominal voltage   | 450 V  |

### Connection cross sections directly pluggable

|                                      |  |
|--------------------------------------|--|
| Conductor cross section rigid        | 0.34 mm <sup>2</sup> ... 4 mm <sup>2</sup> |
| Conductor cross section, rigid [AWG] | 24 ... 12 (converted acc. to IEC)          |

# PTFIX 18X2,5-G OG - Distribution block



3273456

<https://www.phoenixcontact.com/us/products/3273456>

|   |  |
|---|--|
| Conductor cross-section flexible (ferrule without plastic sleeve) | 0.34 mm <sup>2</sup> ... 2.5 mm <sup>2</sup> |
| Flexible conductor cross section (ferrule with plastic sleeve)    | 0.34 mm <sup>2</sup> ... 2.5 mm <sup>2</sup> |

## Dimensions

|        |         |
|--------|---------|
| Width  | 46.9 mm |
| Height | 28.6 mm |
| Depth  | 22.7 mm |

## Material specifications

|   |             |
|---|-------------|
| Color   | orange      |
| Flammability rating according to UL 94                                  | V0          |
| Insulating material group   | I           |
| Insulating material   | PA          |
| Static insulating material application in cold                          | -60 °C      |
| Temperature index of insulation material (DIN EN 60216-1 (VDE 0304-21)) | 130 °C      |
| Relative insulation material temperature index (Elec., UL 746 B)        | 130 °C      |
| Fire protection for rail vehicles (DIN EN 45545-2) R22                  | HL 1 - HL 3 |
| Fire protection for rail vehicles (DIN EN 45545-2) R23                  | HL 1 - HL 3 |
| Fire protection for rail vehicles (DIN EN 45545-2) R24                  | HL 1 - HL 3 |
| Fire protection for rail vehicles (DIN EN 45545-2) R26                  | HL 1 - HL 3 |
| Calorimetric heat release NFPA 130 (ASTM E 1354)                        | 28 MJ/kg    |
| Surface flammability NFPA 130 (ASTM E 162)                              | passed      |
| Specific optical density of smoke NFPA 130 (ASTM E 662)                 | passed      |
| Smoke gas toxicity NFPA 130 (SMP 800C)                                  | passed      |

## Mechanical properties

### Mechanical data

|                 |    |
|-----------------|----|
| Open side panel | No |
|-----------------|----|

## Mechanical tests

### Attachment on the carrier

|        |  |
|--------|--|
| Result | Test passed  |
| Note   | When aligning several blocks, it is recommended to either place a DIN rail adapter underneath the connection point or a flange element between the blocks.<br><br>For versions with 6 or 7 connections, it is enough to place one DIN rail adapter centrally per block and place flange elements after every other block.<br><br>When using the DIN rail adapter PTFIX-NS35, an aligned block must not protrude by more than a half. |

## Environmental and real-life conditions

### Needle-flame test

|                  |      |
|------------------|------|
| Time of exposure | 30 s |
|------------------|------|

# PTFIX 18X2,5-G OG - Distribution block



3273456

<https://www.phoenixcontact.com/us/products/3273456>

|        |             |
|--------|-------------|
| Result | Test passed |
|--------|-------------|

## Oscillation/broadband noise

|                        |  |
|------------------------|--|
| Specification          | DIN EN 50155 (VDE 0115-200):2008-03            |
| Spectrum               | Service life test category 2, bogie-mounted    |
| Frequency              | $f_1 = 5 \text{ Hz}$ to $f_2 = 250 \text{ Hz}$ |
| ASD level              | 6.12 (m/s <sup>2</sup> )/Hz                    |
| Acceleration           | 3.12g  |
| Test duration per axis | 5 h  |
| Test directions        | X-, Y- and Z-axis                              |
| Result                 | Test passed                                    |

## Shocks

|                                |                                     |
|--------------------------------|-------------------------------------|
| Specification                  | DIN EN 50155 (VDE 0115-200):2008-03 |
| Pulse shape                    | Half-sine                           |
| Acceleration                   | 30g                                 |
| Shock duration                 | 18 ms                               |
| Number of shocks per direction | 3                                   |
| Test directions                | X-, Y- and Z-axis (pos. and neg.)   |
| Result                         | Test passed                         |

## Ambient conditions

|  |   |
|--|---|
| Ambient temperature (storage/transport)  | -25 °C ... 60 °C (for a short time, not exceeding 24 h, -60 °C to +70 °C) |
| Ambient temperature (assembly)           | -5 °C ... 70 °C   |
| Ambient temperature (actuation)          | -5 °C ... 70 °C   |
| Permissible humidity (storage/transport) | 30 % ... 70 %   |

## Standards and regulations

|                                  |               |
|----------------------------------|---------------|
| Connection in acc. with standard | IEC 60998-2-2 |
|----------------------------------|---------------|

## Mounting

|               |          |
|---------------|----------|
| Mounting type | adhesive |
|---------------|----------|

# PTFIX 18X2,5-G OG - Distribution block

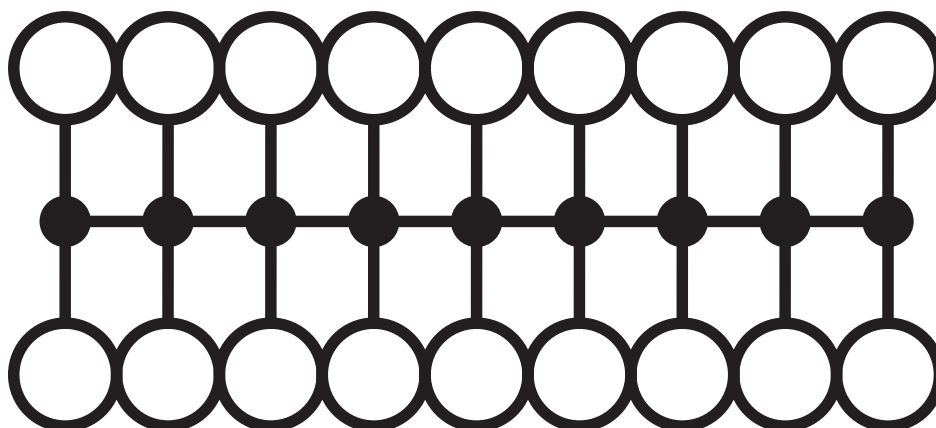


3273456

<https://www.phoenixcontact.com/us/products/3273456>

## Drawings

Circuit diagram



# PTFIX 18X2,5-G OG - Distribution block





3273456


<https://www.phoenixcontact.com/us/products/3273456>


## Approvals


To download certificates, visit the product detail page: <https://www.phoenixcontact.com/us/products/3273456>


|  <b>CSA</b><br>Approval ID: 13631 |                       |                       |                   |                      |
|--|-----------------------|-----------------------|-------------------|----------------------|
|  | Nominal voltage $U_N$ | Nominal current $I_N$ | Cross section AWG | Cross section $mm^2$ |
| Use group B  | 300 V                 | 20 A                  | 26 - 12           | -                    |
| Use group C  | 300 V                 | 20 A                  | 26 - 12           | -                    |
| Use group D  | 600 V                 | 5 A                   | 26 - 12           | -                    |

|  <b>IECEE CB Scheme</b><br>Approval ID: DE1-63085 |                       |                       |                   |                      |
|--|-----------------------|-----------------------|-------------------|----------------------|
|  | Nominal voltage $U_N$ | Nominal current $I_N$ | Cross section AWG | Cross section $mm^2$ |
|  | 450 V                 | 24 A                  | -                 | -                    |

|  <b>EAC</b><br>Approval ID: RU C-DE.BL08.B.00644 |  |  |  |  |
|---|--|--|--|--|
|---|--|--|--|--|

|  <b>LR</b><br>Approval ID: LR2002627TA |  |  |  |  |
|---|--|--|--|--|
|---|--|--|--|--|

|  <b>VDE Zeichengenehmigung</b><br>Approval ID: 40047798 |                       |                       |                   |                      |
|--|-----------------------|-----------------------|-------------------|----------------------|
|  | Nominal voltage $U_N$ | Nominal current $I_N$ | Cross section AWG | Cross section $mm^2$ |
|  | 450 V                 | 24 A                  | -                 | -                    |

|  <b>cULus Recognized</b><br>Approval ID: E60425 |                       |                       |                   |                      |
|--|-----------------------|-----------------------|-------------------|----------------------|
|  | Nominal voltage $U_N$ | Nominal current $I_N$ | Cross section AWG | Cross section $mm^2$ |
| Use group B  | 300 V                 | 20 A                  | 26 - 12           | -                    |
| Use group C  | 300 V                 | 20 A                  | 26 - 12           | -                    |
| Use group D  | 600 V                 | 5 A                   | 26 - 12           | -                    |

# PTFIX 18X2,5-G OG - Distribution block



3273456

<https://www.phoenixcontact.com/us/products/3273456>

## Classifications

### ECLASS

|             |          |
|-------------|----------|
| ECLASS-11.0 | 27141120 |
| ECLASS-13.0 | 27250118 |

### ETIM

|          |          |
|----------|----------|
| ETIM 9.0 | EC000897 |
|----------|----------|

### UNSPSC

|             |          |
|-------------|----------|
| UNSPSC 21.0 | 39121400 |
|-------------|----------|

# PTFIX 18X2,5-G OG - Distribution block



3273456

<https://www.phoenixcontact.com/us/products/3273456>

## Environmental product compliance

|            |   |
|------------|---|
| China RoHS | Environmentally friendly use period: unlimited = EFUP-e |
|            | No hazardous substances above threshold values          |



# PTFIX 18X2,5-G OG - Distribution block



3273456

<https://www.phoenixcontact.com/us/products/3273456>

## Accessories

**i** Note: Applying some accessories below might limit this product.

### FBS 2-5 - Plug-in bridge

3030161

<https://www.phoenixcontact.com/us/products/3030161>



Plug-in bridge, pitch: 5.2 mm, number of positions: 2, length: 23 mm, color: red

**i** Max. current carrying capacity: 24 A

### FBS 2-5 GN - Plug-in bridge

3032143

<https://www.phoenixcontact.com/us/products/3032143>



Plug-in bridge, pitch: 5.2 mm, number of positions: 2, color: green

**i** Max. current carrying capacity: 24 A

# PTFIX 18X2,5-G OG - Distribution block

3273456

<https://www.phoenixcontact.com/us/products/3273456>




## FBS 2-5 BU - Plug-in bridge

3036877

<https://www.phoenixcontact.com/us/products/3036877>



Plug-in bridge, pitch: 5.2 mm, number of positions: 2, color: blue

 Max. current carrying capacity: 24 A

---


## FBS 2-5 GY - Plug-in bridge

3038969

<https://www.phoenixcontact.com/us/products/3038969>



Plug-in bridge, pitch: 5.2 mm, number of positions: 2, color: gray

 Max. current carrying capacity: 24 A

# PTFIX 18X2,5-G OG - Distribution block



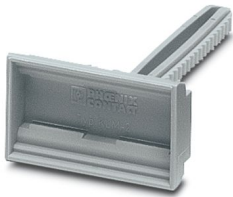
3273456

<https://www.phoenixcontact.com/us/products/3273456>

## KLM 2 - Terminal strip marker carrier

0807575

<https://www.phoenixcontact.com/us/products/0807575>



Terminal strip marker carrier, adjustable height, for CLIPFIX 15, CLIPFIX 35, and CLIPFIX 35-5 end brackets, can be marked using snap-in labels

---

## KLM 3-L - Terminal strip marker carrier

0814788

<https://www.phoenixcontact.com/us/products/0814788>



Terminal strip marker carrier, adjustable height, for CLIPFIX 15, CLIPFIX 35, and CLIPFIX 35-5 end brackets, can be marked using labels in 20 x 8 mm format

# PTFIX 18X2,5-G OG - Distribution block

3273456

<https://www.phoenixcontact.com/us/products/3273456>



## MPS-MT 1-S - Test plug

1944372

<https://www.phoenixcontact.com/us/products/1944372>

Test plug, consisting of 1.0 mm Ø test pin and 2.0 mm Ø socket



---

## PAI-4-N GY - Test adapter

3032871

<https://www.phoenixcontact.com/us/products/3032871>

4 mm test adapter, for terminal blocks with 5.2 mm, 6.2 mm and 8.2 mm pitch



# PTFIX 18X2,5-G OG - Distribution block



3273456

<https://www.phoenixcontact.com/us/products/3273456>

## MPS-MT - Test plug

0201744

<https://www.phoenixcontact.com/us/products/0201744>



Test plug, with solder connection up to 1 mm<sup>2</sup> conductor cross section, number of positions: 1, color: gray

---

## MPS-IH WH - Insulating sleeve

0201663

<https://www.phoenixcontact.com/us/products/0201663>

Insulating sleeve, color: white



# PTFIX 18X2,5-G OG - Distribution block

3273456

<https://www.phoenixcontact.com/us/products/3273456>



## MPS-IH RD - Insulating sleeve

0201676

<https://www.phoenixcontact.com/us/products/0201676>

Insulating sleeve, color: red



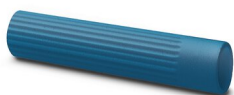
---

## MPS-IH BU - Insulating sleeve

0201689

<https://www.phoenixcontact.com/us/products/0201689>

Insulating sleeve, color: blue



# PTFIX 18X2,5-G OG - Distribution block

3273456

<https://www.phoenixcontact.com/us/products/3273456>



## MPS-IH YE - Insulating sleeve

0201692

<https://www.phoenixcontact.com/us/products/0201692>

Insulating sleeve, color: yellow



---

## MPS-IH GN - Insulating sleeve

0201702

<https://www.phoenixcontact.com/us/products/0201702>

Insulating sleeve, color: green



# PTFIX 18X2,5-G OG - Distribution block

3273456

<https://www.phoenixcontact.com/us/products/3273456>



## MPS-IH GY - Insulating sleeve

0201728

<https://www.phoenixcontact.com/us/products/0201728>

Insulating sleeve, color: gray



---

## MPS-IH BK - Insulating sleeve

0201731

<https://www.phoenixcontact.com/us/products/0201731>

Insulating sleeve, color: black





# PTFIX 18X2,5-G OG - Distribution block

3273456

<https://www.phoenixcontact.com/us/products/3273456>



## ISH 2,5/0,2 - Insulating sleeve

3002843

<https://www.phoenixcontact.com/us/products/3002843>



Insulating sleeve, color: white

---

## ISH 2,5/0,5 - Insulating sleeve

3002856

<https://www.phoenixcontact.com/us/products/3002856>



Insulating sleeve, color: gray

# PTFIX 18X2,5-G OG - Distribution block

3273456

<https://www.phoenixcontact.com/us/products/3273456>



## ISH 2,5/1,0 - Insulating sleeve

3002869

<https://www.phoenixcontact.com/us/products/3002869>

Insulating sleeve, color: black

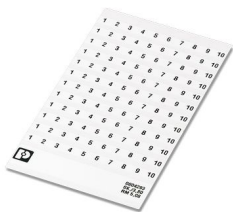


## SK 3,8 REEL P4,15 WH CUS - Marker card

0825990

<https://www.phoenixcontact.com/us/products/0825990>

Marker card, can be ordered: by card, white, labeled according to customer specifications, mounting type: adhesive, for terminal block width: 4.15 mm, lettering field size: continuous x 3.8 mm



# PTFIX 18X2,5-G OG - Distribution block



3273456

<https://www.phoenixcontact.com/us/products/3273456>

## TML (EX3,8)R - Marker strip

0801837

<https://www.phoenixcontact.com/us/products/0801837>



Marker strip, Roll, white, unlabeled, can be labeled with: THERMOMARK E.300 (D)/600 (D), THERMOMARK ROLL 2.0, THERMOMARK ROLL, THERMOMARK ROLL X1, THERMOMARK ROLLMASTER 300/600, THERMOMARK X1.2, mounting type: adhesive, lettering field size: continuous x 3.8 mm, Number of individual labels: 12

---

## TML (104X3,8)R - Marker strip

0801833

<https://www.phoenixcontact.com/us/products/0801833>



Marker strip, Roll, white, unlabeled, can be labeled with: THERMOMARK E.300 (D)/600 (D), THERMOMARK ROLL 2.0, THERMOMARK ROLL, THERMOMARK ROLL X1, THERMOMARK ROLLMASTER 300/600, THERMOMARK X1.2, mounting type: adhesive, for terminal block width: 104 mm, lettering field size: 104 x 3.8 mm, Number of individual labels: 2500

# PTFIX 18X2,5-G OG - Distribution block



3273456

<https://www.phoenixcontact.com/us/products/3273456>

## TML (104X2,8)R - Marker strip

0801832

<https://www.phoenixcontact.com/us/products/0801832>



Marker strip, Roll, white, unlabeled, can be labeled with: THERMOMARK E.300 (D)/600 (D), THERMOMARK ROLL 2.0, THERMOMARK ROLL, THERMOMARK ROLL X1, THERMOMARK ROLLMASTER 300/600, THERMOMARK X1.2, mounting type: adhesive, for terminal block width: 104 mm, lettering field size: 104 x 2.8 mm, Number of individual labels: 2500

---

## TML (EX2,8)R - Marker strip

0801836

<https://www.phoenixcontact.com/us/products/0801836>



Marker strip, Roll, white, unlabeled, can be labeled with: THERMOMARK E.300 (D)/600 (D), THERMOMARK ROLL 2.0, THERMOMARK ROLL, THERMOMARK ROLL X1, THERMOMARK ROLLMASTER 300/600, THERMOMARK X1.2, mounting type: adhesive, for terminal block width: 30000 mm, lettering field size: continuous x 2.8 mm, Number of individual labels: 14

# PTFIX 18X2,5-G OG - Distribution block



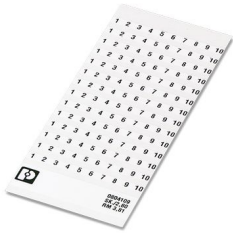
3273456

<https://www.phoenixcontact.com/us/products/3273456>

## SK 2,8 REEL P4,15 WH CUS - Marker card

8199987

<https://www.phoenixcontact.com/us/products/8199987>



Marker card, can be ordered: by card, white, labeled according to customer specifications, mounting type: adhesive, for terminal block width: 4.15 mm, lettering field size: continuous x 2.8 mm

---

## US-TML (104X3,8) - Marker for terminal blocks

0830768

<https://www.phoenixcontact.com/us/products/0830768>



Marker for terminal blocks, Card, white, unlabeled, can be labeled with: BLUEMARK ID COLOR, BLUEMARK ID, THERMOMARK PRIME, THERMOMARK CARD 2.0, THERMOMARK CARD, mounting type: adhesive, lettering field size: 104 x 3.8 mm, Number of individual labels: 22

# PTFIX 18X2,5-G OG - Distribution block



3273456

<https://www.phoenixcontact.com/us/products/3273456>

## US-TML (104X2,8) - Marker for terminal blocks

0830767

<https://www.phoenixcontact.com/us/products/0830767>



Marker for terminal blocks, Card, white, unlabeled, can be labeled with: BLUEMARK ID COLOR, BLUEMARK ID, THERMOMARK PRIME, THERMOMARK CARD 2.0, THERMOMARK CARD, mounting type: adhesive, lettering field size: 104 x 2.8 mm, Number of individual labels: 26

---

## SK U/3,8 WH:UNBEDRUCKT - Marker card

0803906

<https://www.phoenixcontact.com/us/products/0803906>



Marker card, Din A4, white, unlabeled, can be labeled with: PLOTMARK, CMS-P1-PLOTTER, Office printing systems, mounting type: adhesive, for terminal block width: 210 mm, lettering field size: 186 x 3.8 mm, Number of individual labels: 1440

# PTFIX 18X2,5-G OG - Distribution block

3273456

<https://www.phoenixcontact.com/us/products/3273456>



## SK U/2,8 WH:UNBEDRUCKT - Marker card

0803883

<https://www.phoenixcontact.com/us/products/0803883>



Marker card, Din A4, white, unlabeled, can be labeled with: PLOTMARK, CMS-P1-PLOTTER, Office printing systems, mounting type: adhesive, for terminal block width: 210 mm, lettering field size: 186 x 2.8 mm, Number of individual labels: 3600

---

## MM-TML (EX3,8)R C1 WH/BK - Label

1092026

<https://www.phoenixcontact.com/us/products/1092026>



Label, Roll, white/black, unlabeled, can be labeled with: THERMOFOX, THERMOMARK GO, THERMOMARK GO.K, mounting type: adhesive, lettering field size: continuous x 2.8 mm, Number of individual labels: 1

# PTFIX 18X2,5-G OG - Distribution block

3273456

<https://www.phoenixcontact.com/us/products/3273456>



## MPS-MT SN - Test plug

3212251

<https://www.phoenixcontact.com/us/products/3212251>



Test plug, with solder connection up to 1 mm<sup>2</sup> conductor cross section, tin-plated surface, number of positions: 1, color: silver

---

## SZF 1-0,6X3,5 - Screwdriver

1204517

<https://www.phoenixcontact.com/us/products/1204517>



Actuation tool, for ST terminal blocks, also suitable for use as a bladed screwdriver, size: 0.6 x 3.5 x 100 mm, 2-component grip, with non-slip grip

---

Phoenix Contact 2023 © - all rights reserved  
<https://www.phoenixcontact.com>

Phoenix Contact USA  
586 Fulling Mill Road  
Middletown, PA 17057, United States  
(+717) 944-1300  
[info@phoenixcon.com](mailto:info@phoenixcon.com)