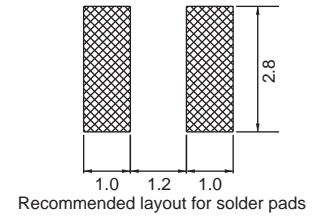
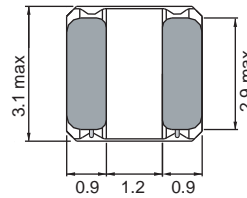
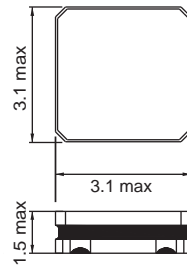
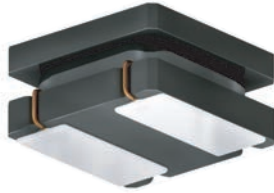
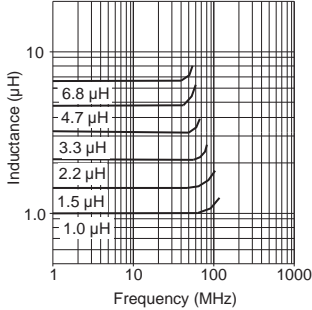


1212 FPS

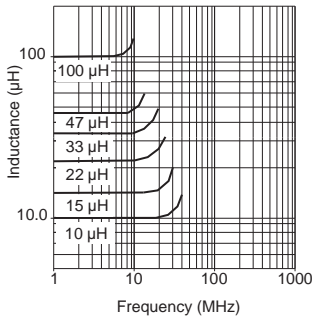
Shielded



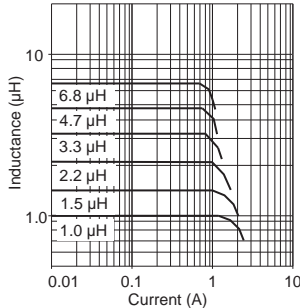
Typical Ls vs Frequency (f)



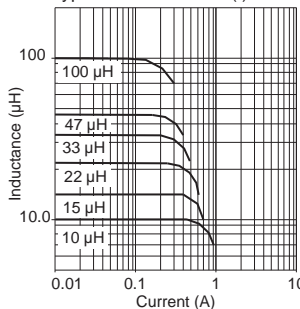
Typical Ls vs Frequency (f)



Typical Ls vs Current (I)



Typical Ls vs Current (I)



Part No	Inductance	f _L	ToI	SRF	DCR	Rated DC Current (A)			
	L (µH)	(MHz)	± (%)	min (MHz)	typ max	Isat typ	Isat max	I _{rms} typ	I _{rms} max
1212FPS-1R0X-01	1.0	1/0.1V	20,30	145	0.040 0.048	2.35	2.10	2.35	2.10
1212FPS-1R5X-01	1.5	1/0.1V	20,30	130	0.055 0.066	2.00	1.80	2.10	1.90
1212FPS-2R2X-01	2.2	1/0.1V	20,30	90	0.060 0.072	1.65	1.48	1.80	1.60
1212FPS-3R3X-01	3.3	1/0.1V	20,30	75	0.093 0.112	1.40	1.21	1.60	1.45
1212FPS-4R7X-01	4.7	1/0.1V	20,30	65	0.113 0.136	1.20	1.08	1.40	1.25
1212FPS-6R8X-01	6.8	1/0.1V	20,30	50	0.176 0.211	1.05	0.90	1.10	0.90
1212FPS-100X-01	10	1/0.1V	20,30	45	0.234 0.276	0.88	0.75	1.00	0.87
1212FPS-150X-01	15	1/0.1V	20,30	33	0.352 0.422	0.68	0.58	0.80	0.65
1212FPS-220X-01	22	1/0.1V	20,30	28	0.510 0.622	0.58	0.47	0.60	0.55
1212FPS-330X-01	33	1/0.1V	20,30	22	0.799 0.959	0.46	0.39	0.50	0.45
1212FPS-470X-01	47	1/0.1V	20,30	18	1.172 1.406	0.38	0.32	0.45	0.40
1212FPS-101X-01	100	1/0.1V	20,30	11	2.433 2.920	0.27	0.23	0.29	0.25

Core Material : Ferrite

Revision date : 06 Apr 2018

SPQ : Taped / Reel 2000 [-01]

Chip Inductors for Power Applications