

THREADED MOUNTING BRACKETS

THREADED MOUNTING BRACKETS

4-40 THREAD

CAT. NO. 612

MATERIAL:
.062 (1.57) thick Steel,
Zinc Plate

4-40 THREAD

CAT. NO. 621

MATERIAL:
.062 (1.57) thick Steel,
Zinc Plate

4-40 THREAD

CAT. NO. 616

MATERIAL:
.047 (1.19) thick Brass,
Tin Plate

6-32 THREAD

CAT. NO. 634

MATERIAL:
.032 (.81) thick Brass,
Nickel Plate

6-32 THREAD

CAT. NO. 614

MATERIAL:
.032 (.81) thick Brass,
Tin Plate

6-32 THREAD

CAT. NO. 630

MATERIAL:
.032 (.81) thick Brass,
Tin Plate

6-32 THREAD

CAT. NO. 4334

MATERIAL:
.062 (1.57) thick Steel,
Nickel Plate

6-32 THREAD

CAT. NO. 708

MATERIAL:
.062 (1.57) thick Steel,
Nickel Plate

6-32 THREAD

CAT. NO. 617

MATERIAL:
.062 (1.57) thick Steel,
Tin Plate

6-32 or 8-32 THREAD

CAT. NO.	THREAD
4332	6-32
4333	8-32

MATERIAL:
.062 (1.57) thick Brass,
Nickel Plate

8-32 THREAD

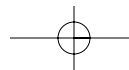
CAT. NO. 611

MATERIAL:
.037 (.94) thick Brass,
Tin Plate

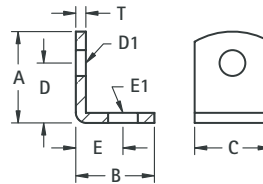
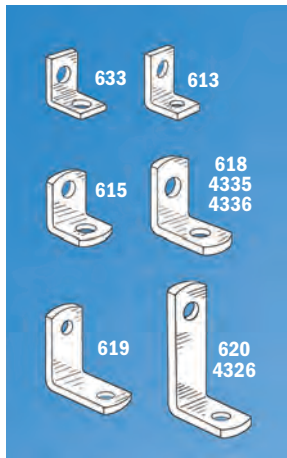
8-32 THREAD

CAT. NO. 631

MATERIAL:
.037 (.94) thick Steel,
Tin Plate



UNIVERSAL CLEAR HOLE BRACKETS



CAT. NO.	A	B	C	D	D HOLE DIAMETER	E	E HOLE DIAMETER	T	MATERIAL	FINISH
633	.375 (9.5)	.375 (9.5)	.281 (7.1)	.218 (5.5)	.140 (3.6)	.218 (5.5)	.140 (3.6)	.032 (.81)	Brass	Nickel
613	.390 (9.9)	.453 (11.5)	.375 (9.5)	.234 (5.9)	.147 (3.7)	.299 (7.6)	.128 (3.3)	.032 (.81)	Brass	Nickel
615	.420 (10.7)	.343 (8.7)	.281 (7.1)	.281 (7.1)	.144 (3.7)	.203 (5.2)	.128 (3.3)	.032 (.81)	Brass	Tin
4335	.562 (14.3)	.562 (14.3)	.500 (12.7)	.412 (10.5)	.120 (3.0)	.411 (10.4)	.120 (3.0)	.062 (1.57)	Steel	Nickel
4336	.562 (14.3)	.562 (14.3)	.500 (12.7)	.412 (10.5)	.144 (3.7)	.412 (10.5)	.144 (3.7)	.062 (1.57)	Steel	Nickel
618	.628 (16.0)	.628 (16.0)	.375 (9.5)	.378 (9.6)	.169 (4.3)	.378 (9.6)	.169 (4.3)	.050 (1.27)	Brass	Tin
619	.687 (17.4)	.687 (17.4)	.375 (9.5)	.500 (12.7)	.144 (3.7)	.500 (12.7)	.144 (3.7)	.032 (.81)	Steel	Tin
4326	1.013 (25.7)	.487 (12.4)	.312 (7.9)	.816 (20.7)	.140 (3.6)	.332 (8.4)	.140 (3.6)	.050 (1.27)	Steel	Nickel
620	1.156 (29.4)	.656 (16.7)	.375 (9.5)	.906 (23.0)	.169 (4.3)	.420 (10.7)	.169 (4.3)	.032 (.81)	Steel	Tin

BOARD BRACKETS

Originally designed for our line of standardized terminal boards; these brackets can also be used in other applications.

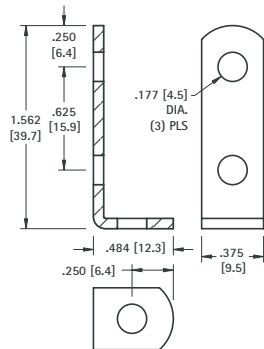
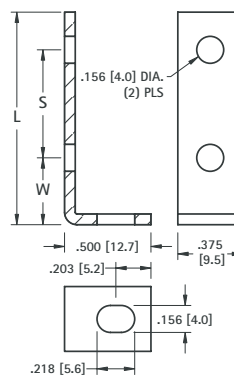
Choice of Steel or Aluminum

MATERIALS:

.062 (1.57) thick Steel, Nickel Plate

.062 (1.57) thick Aluminum

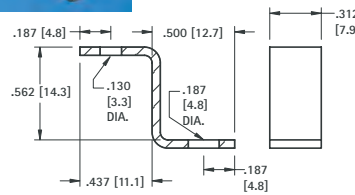
STEEL CAT. NO.	ALUMINUM CAT. NO.	W	L	S	For Use With Board No.'s (Refer to page 130)		
1556	622	.375 (9.5)	1.625 (41.3)	1.000 (25.4)	15032	15072	15092
1567	623	.375 (9.5)	2.125 (54.0)	1.500 (38.1)	15033	15073	15093
1568	624	.375 (9.5)	2.625 (66.7)	2.000 (50.8)	15034	15074	15094
1569	625	.375 (9.5)	3.125 (79.4)	2.500 (63.5)	15035	15075	15095
1570	626	.281 (7.1)	1.187 (30.1)	.750 (19.1)	15022	15024	15030
1571	627	.281 (7.1)	1.625 (41.3)	1.187 (30.1)	15036	15076	15096



CAT. NO. 1564

MATERIAL:

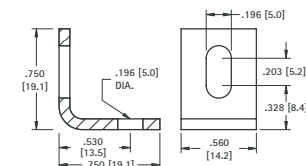
.062 (1.57) thick Steel, Nickel Plate



CAT. NO. 4325

MATERIAL:

.050 (1.27) thick Steel, Nickel Plate



CAT. NO. 4337

MATERIAL:

.080 (2.03) thick Aluminum

THREADED PC MOUNT BRACKETS

- Snaps in for wave soldering
- Reduces assembly time
- Easily mount into predrilled or punched holes
- Stable no rock design

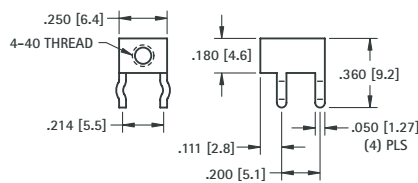


SNAP-IN PC MOUNT



For screw selection refer to pages 79 and 123

4-40 THREAD

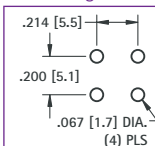


MATERIAL:

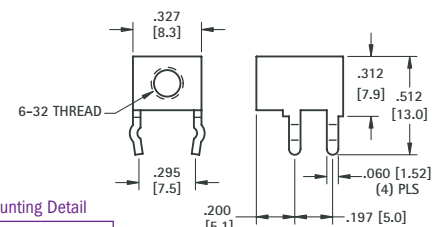
.032 (.81) thick Brass, Tin Plate

CAT. NO. 7774

Mounting Detail



6-32 THREAD

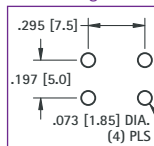


MATERIAL:

.032 (.81) thick Brass, Tin Plate

CAT. NO. 7779

Mounting Detail



Marking

MOUNTING BRACKETS

D.P.

O.D.