

# Overview

There are two versions of this product, the two are the same in software functions, and the differences in hardware are as follows:



- RS485 TO ETH (B): Common Ethernet connector, 9~24V wide voltage power supply via terminal block.
- RS485 TO POE ETH (B): Hardware upgrade version, can support PoE network port power supply, can also support 6~36V wide voltage via terminal block, with electrical isolation.

## RS485 TO POE ETH (B) PoE Ethernet port + Electrical isolation



RS485 to Ethernet serial server

## RS485 TO ETH (B) Common Ethernet port



[More](#)

Introduction

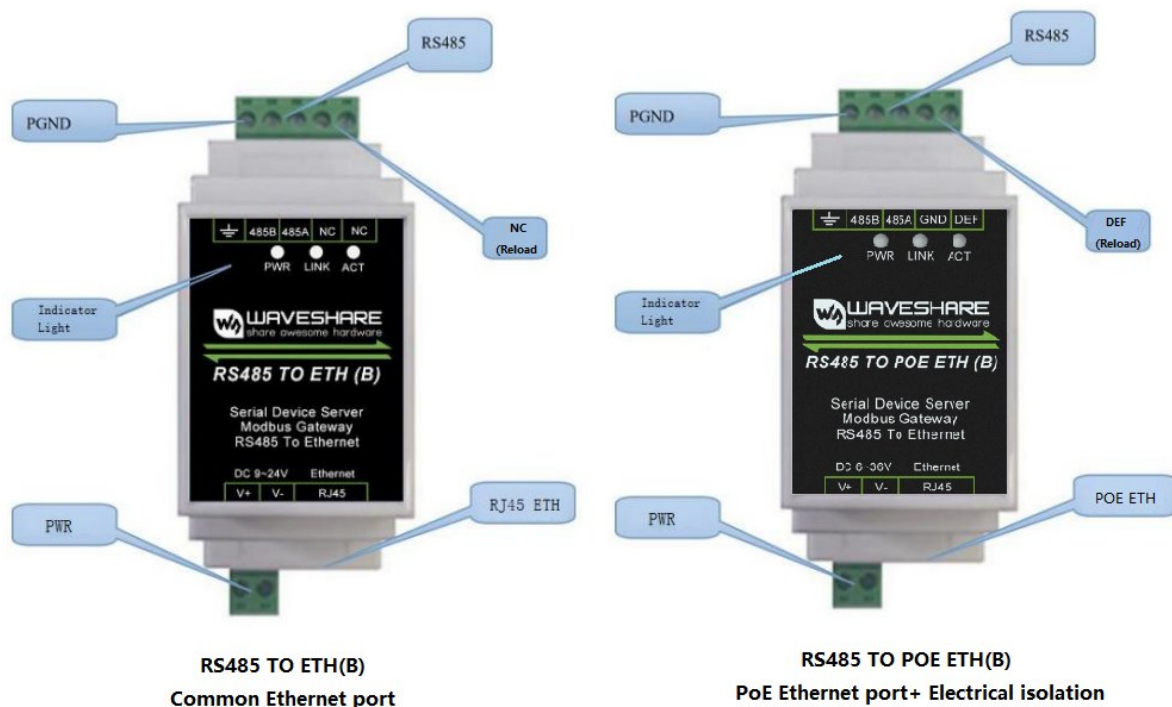
This is an RS485 device data collector/IoT gateway specially designed for the industrial environment, which combines serial server, Modbus gateway, MQTT gateway, RS485 to JSON, and other functions. It has an RS485 interface and an Ethernet interface. It adopts the rail-type installation, which is compact and easy to install. It is very suitable for the collection of various RS485 instruments and sensors in the industrial field, including the collection of the local network or the autonomous collection of uploading to the cloud server.

## Parameters

Model	RS485 TO ETH (B)	RS485 TO POE ETH (B)
<b>Product Types</b>	Serial server, Modbus gateway, MQTT gateway	
<b>Basic Functions</b>	Realize RS485 to Ethernet bidirectional transparent transmission	
<b>Communication Interface</b>	RS485 × 1, Network Port × 1	
<b>Power Supply</b>	Screw Terminal DC 9~24V	Screw terminal DC 6~36V or PoE port
<b>Isolation Protection</b>	No Isolation	Power isolation, signal isolation protection
<b>Communication Port</b>		
<b>Ethernet</b>	Normal Network Port	PoE port, support IEEE 802.3af standard
	10 / 100M self-adaptive RJ45 port, 2 KV grade anti-surge protection	
<b>Serial Port</b>	RS485	Isolated RS485
<b>UART Parameter</b>		
<b>Baud Rate</b>	300 ~ 115200 bps	
<b>Parity Bit</b>	None, odd parity, even parity, mark, space	
<b>Data Bit</b>	5 ~ 9 bit	
<b>Flow Control</b>	No Flow Control	
<b>Software</b>		
<b>Protocol</b>	Ethernet, IP, TCP, UDP, HTTP, ARP, ICMP, DHCP, DNS	
<b>Config Way</b>	Host computer configuration, WEB browser, device management function library	
<b>Communication Way</b>	TCP/IP direct communication, virtual serial port mode	
<b>Working Mode</b>	TCP server, TCP client (the TCP server also coexists), UDP, UDP multicast	
<b>Others</b>		

<b>Operating Temperature</b>	-40°C ~ 85°C
<b>Humidity Range</b>	5% ~ 95% relative humidity
<b>Dimensions</b>	L × W × H: 87 × 36 × 59 mm

## Hardware Description



## Software Features

- Support TCP server, TCP client, UDP mode, and UDP multicast. When acting as a TCP client, it also supports TCP server-side functions. Supports 30 TCP connections as a TCP server and 7 destination IPs as a TCP client.
- The baud rate supports 1200~115200bps, the data bit supports 5~9 bits, and the check digit can be no check, odd check, even check, mark, or space.
- Support the function of sending MAC address when the device is connected, which is convenient for cloud management of the device.
- Provides a secondary development kit DLL development library for searching and configuring devices on the computer side.
- Support Web browser configuration, support DHCP to obtain IP dynamically, and DNS protocol to connect domain name server address.
- Support cloud remote search for devices, the configuration of device parameters, and device program upgrades.
- Support remote viewing of the device's TCP connection status, and serial port data sending and receiving status through software. The virtual serial port supports the data monitoring function.

## Advanced Software Function

- Support Modbus gateway function, support Modbus RTU to Modbus TCP. It can support storage-type Modbus, and can automatically collect device data and store it; it also supports a non-storage mode Modbus gateway.
- Support multi-host function: In the query mode of one question and one answer, the support network port allows multiple computers to access the same serial device at the same time.
- Support MQTT gateway function.
- Support JSON to Modbus RTU and 645-meter protocol, support HTTP POST, and HTTP GET format to upload data.
- Support NTP protocol to obtain network time, which is used for serial output, and the latter is used for protocol content upload.
- Support custom heartbeat package and registration package function: It is convenient to communicate with the cloud and identify devices.
- It supports the function that password authentication is required to establish a connection through TCP to ensure connection security.
- It supports the function of data submission and delivery in HTTP mode, and the cloud can directly use the HTTP GET command to interact with the serial port data of the device.

## Application

- As an IoT gateway as a communication bridge between devices and the cloud.
- Power, Smart Meter, and Energy Monitoring.
- Remote monitoring and program download of various automation PLCs.
- Various configuration software and equipment communication interfaces.
- Access control security field equipment networking.

## Quick Test

### Hardware Connection

- Here RS485 TO ETH (B) is taken as an example, and RS485 TO POE ETH (B) is connected in the same way.

Generally speaking, the serial server only needs to connect the power supply, serial port, and network cable. Among them, the power supply can use the field 2-wire power supply, which can be directly connected to the positive and negative terminals of the power supply. The serial port needs to be connected according to the user's serial port device. Connect 485 positive to 485A and 485 negative to 485B. The Ethernet port is connected to a common network cable, which can be directly connected to the computer or connected to the network through a switch.

[RS485 TO ETH \(B\)010.jpg](#)

[RS485 TO ETH \(B\)011.jpg](#)

## Software Installation

Vircom can be used to configure parameters such as device IP and create virtual serial ports. If you don't need the virtual serial port function, you can just download the free version configuration software.

- [VirCom](#)
- [Virtual serial port driver](#)

The driver installation needs to be decompressed. Double-click the software to install. If the virtual serial port in Vircom is not displayed, restart it and check it again.

## Examples

### TCP Communication Test

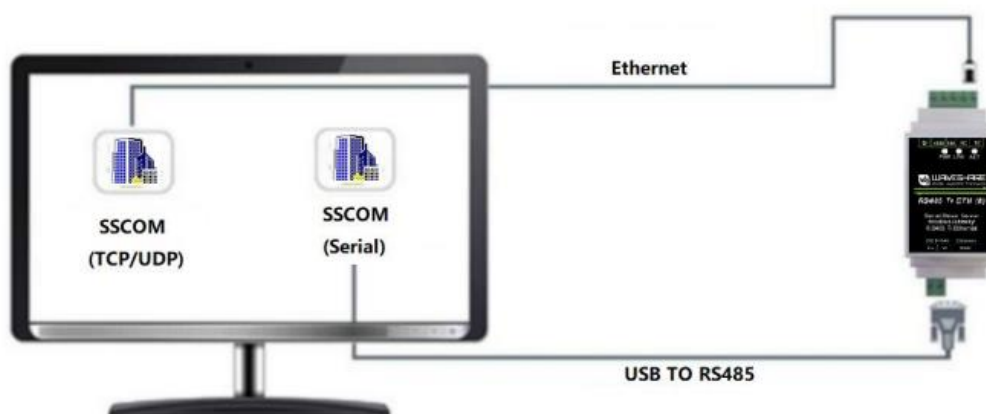
---

#### Software Preparation

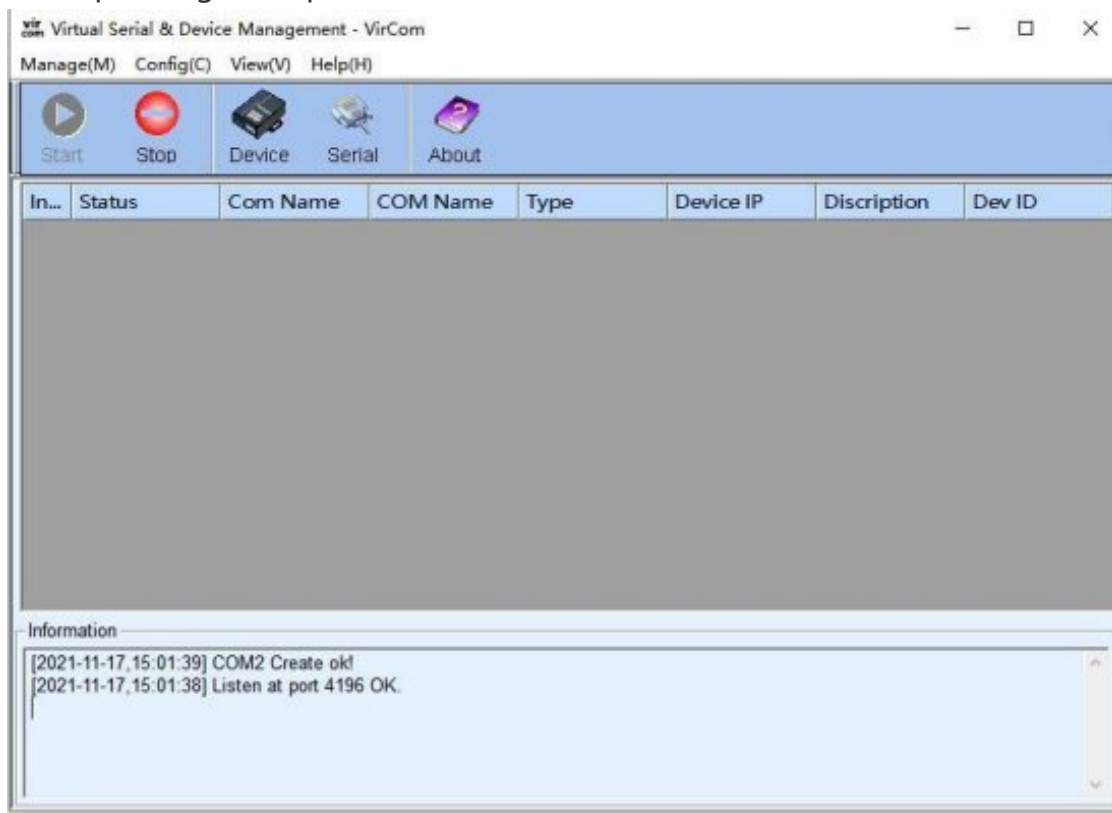
- [VirCom](#)
- [Sscm5.13.1](#)

#### Operating Steps

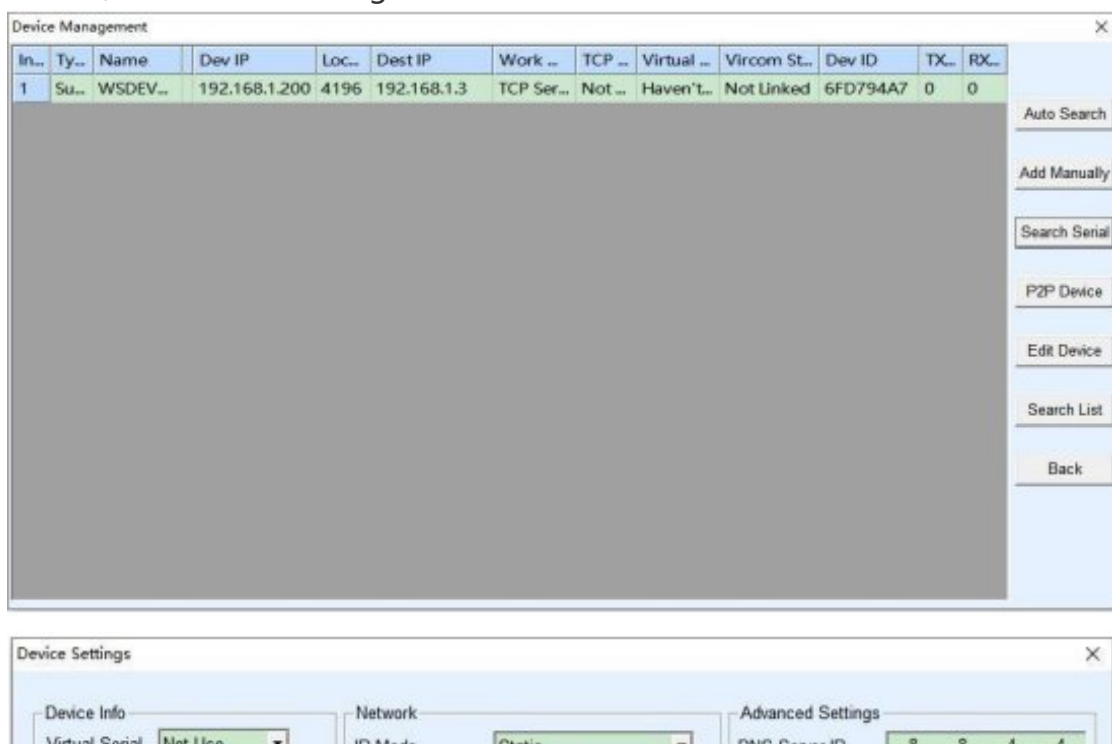
After Vircom is installed and the device hardware connection is finished, the software is run as shown in the figure, and then you can click "Device Management" as shown in the figure. With Vircom, it is very convenient to search and configure device parameters in different network segments, as long as the device and the computer running Vircom are under the same switch. The following tests also require a [USB TO RS485 device](#).

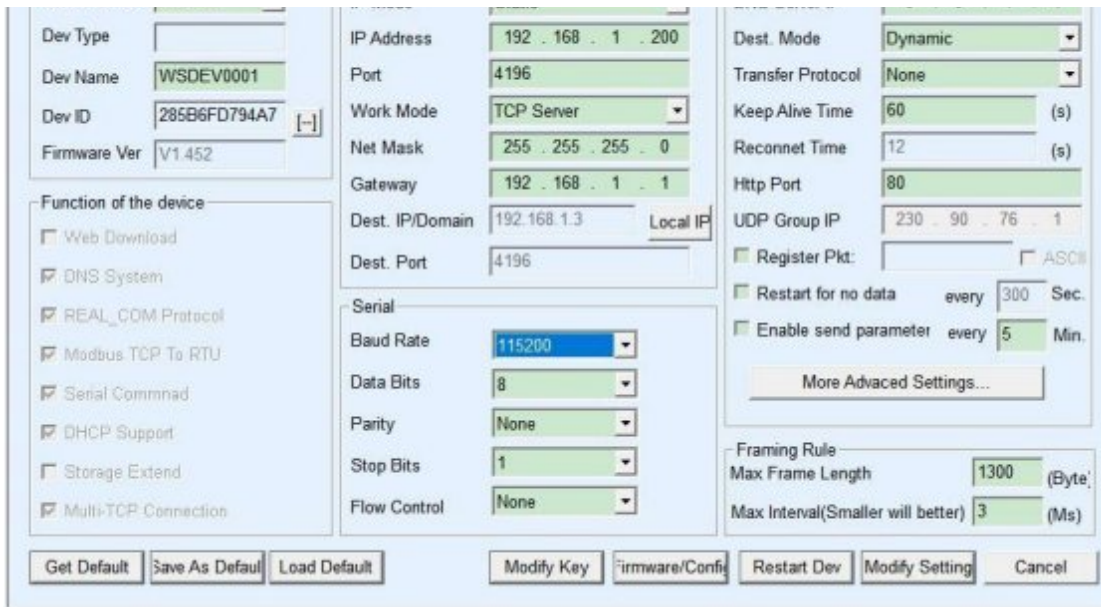


The serial port to the Ethernet port and the Ethernet port to the serial port data transparent forwarding function of the serial port server. Assuming that the COM port (USB TO RS485) of the PC is now connected to the serial port of the serial port server, then open the serial port debugging assistant window and open the corresponding COM port, as shown below:



In addition, open another serial port debugging assistant window and use it as a TCP client mode, fill in the destination IP as the IP of the serial port server (currently 192.168.1.200), the destination port as 4196, and then click the "Open" button, as shown in the figure below:





In the serial debugging assistant SSCOM2 set as TCPClient, enter "TCPClient: Waveshare Test" and click send, then the data will be transferred to the RS485 interface through the serial server's network port, and then sent to the USB TO RS485, and then displayed in the serial debugging assistant SSCOM1 out; conversely, enter "USB TO RS485: Waveshare Test" in SSCOM1, click send, you can also send to SSCOM2, and display it.

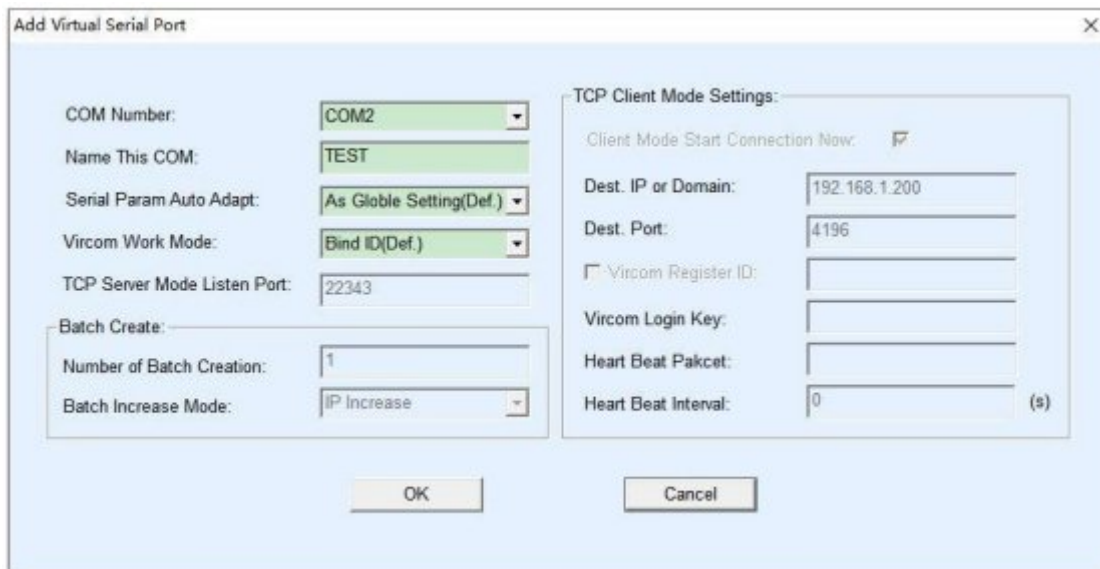
## Virtual Serial Port Test

The SSCOM2 in the figure communicates directly with the serial port server through TCP. In order to allow the user's already developed serial port software to communicate with the serial port server, a virtual serial port needs to be added between the user program and the serial port server. As shown in the figure, Vircom, and user programs run on one computer, Vircom virtualizes a COM port and makes this COM port correspond to the serial port server. When the user program opens COM communication, it can be sent to the user's serial device through the Vircom serial server. The steps to do this are shown below:

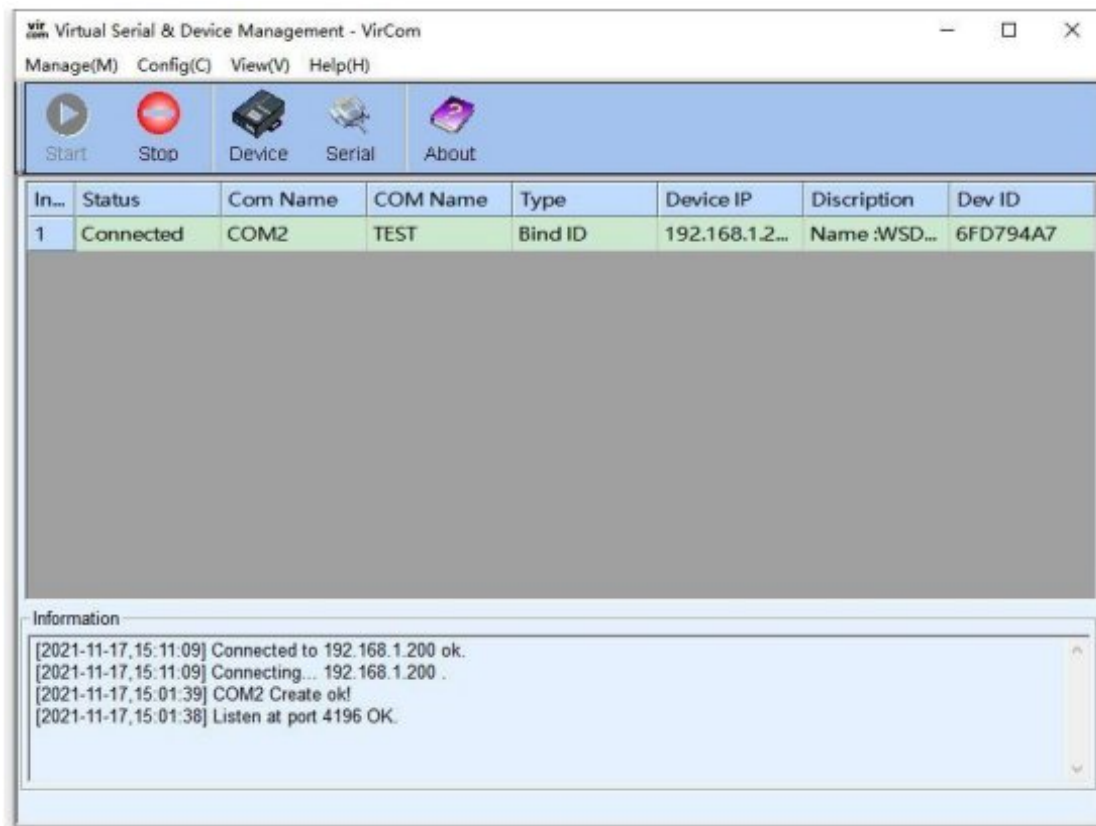


Click the "UART management" in the Vircom interface, click "add", and then choose

COM2. Among them, COM5 is the COM port that did not exist in the computer.



Then enter the device management, and double-click the device that needs to be bound to COM2. As shown in the figure, select COM2 in the "Virtual Serial Port" list in the upper left corner. Then click "Modify Settings", click "Restart Device", and return to the main interface of Vircom. It can be seen that COM2 has been connected to the device whose IP is 192.168.1.200. In this case, COM2 can be used instead of SSCOM2 for communication.

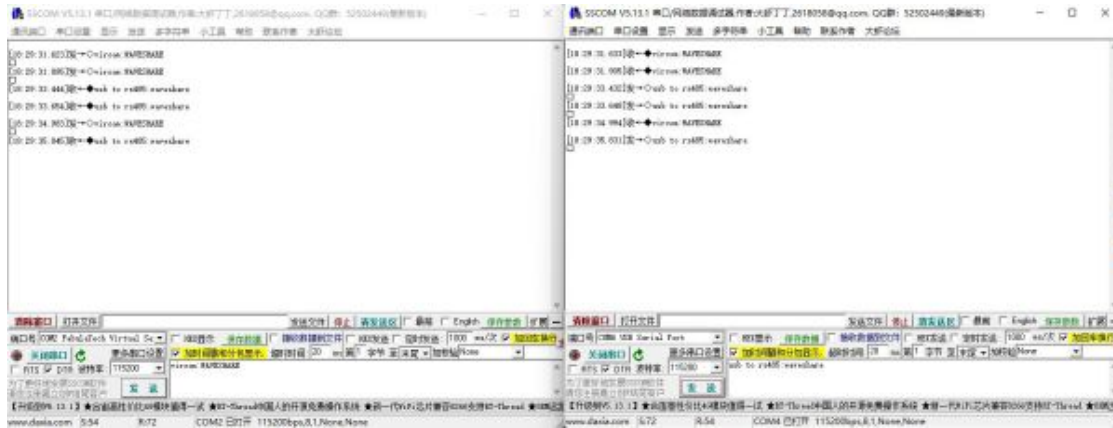


Open SSCOM to simulate the user's serial port program, open COM2 (the virtual serial port above), open another SSCOM to simulate a serial port device, and open COM3 (hardware serial port). At this time, the data link sent by COM2 is as follows: COM2 -> Vircom -> the Ethernet port of the serial server -> the serial port of the



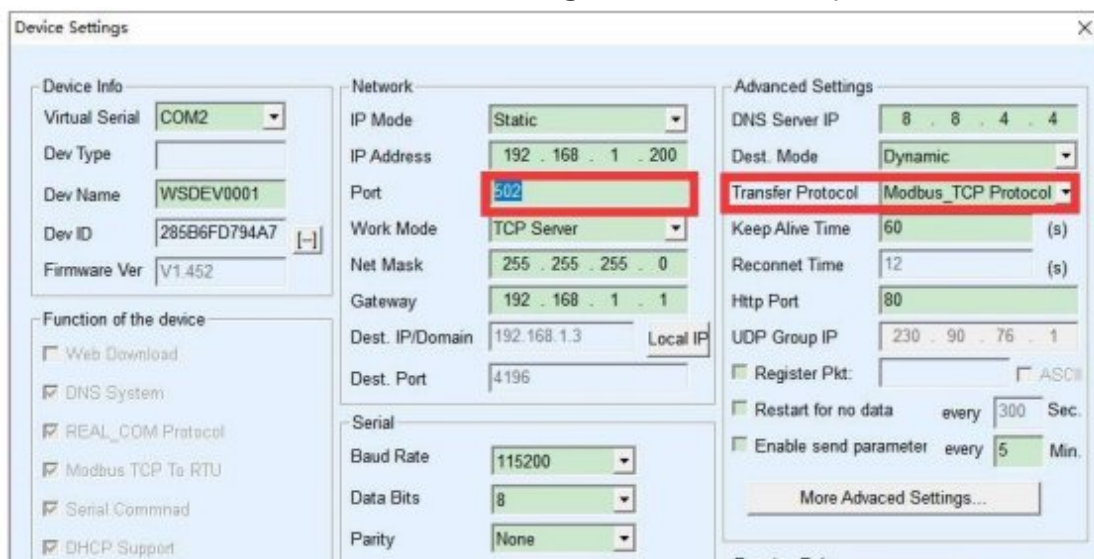
serial server -> COM3.

Conversely, COM3 to COM2 can also transmit data: COM3 -> the serial port of the serial server -> the Ethernet port of the serial server -> Vircom -> COM2. As shown in the figure below, both parties send and receive data. If COM4 is replaced with the user serial device, then COM5 can realize the communication with the user device.



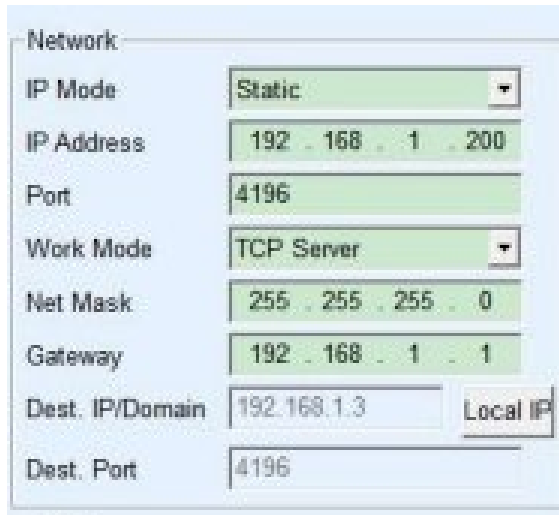
## MODBUS TCP Test

By default, the data between the serial port and the Ethernet port is transparently transmitted. If you need to convert Modbus TCP to RTU, you need to select the conversion protocol as "Modbus TCP <--> RTU" in the device settings dialog box, as shown in the figure below. At this time, the device port automatically changes to 502. At this time, the user's Modbus TCP tool is connected to the IP port 502 of the serial server and the sent Modbus TCP command will be converted into an RTU command and output from the serial port. For example, if the serial port server network port receives the Modbus TCP command of 00 00 00 00 00 0601 03 00 00 0a, the serial port outputs the command of 01 03 00 00 00 0a c5 cd. Note: The serial port may send multiple 01 03 00 00 00 0a c5 cd commands because the default Modbus adopts the storage mode, which will automatically train the query commands. How to switch to non-storage mode will be explained later.





If the user's Modbus TCP software is used as a slave station (Slave), it is necessary to select the conversion protocol, then change the working mode to the client, the destination IP to the IP of the computer where the Modbus TCP software is located, and the destination port to 502, as shown in the figure below.



## WEB Configuration

Using Vircom, you can search and configure device parameters in different network segments. For Web configuration, you must first ensure that the computer and the serial server are in the same IP segment, and you need to know the IP address of the serial server in advance. But web configuration can be done on any computer without Vircom.

1. Enter the IP address of the serial server in the browser, such as <http://192.168.1.200>.



2. Enter a password in Password: There is no login password set by default in the factory, you can enter a password at will, and click the Login button to log in. After

setting the password to log in, the settings at "Modify webpage login password" will take effect:

The screenshot shows the Waveshare configuration web interface. At the top left is the Waveshare logo with the tagline "share awesome hardware". To the right are "Logout" and "Chinese" buttons. The main content is organized into several sections:

- Device Information:** A table with fields for Device Name (w550ev0001), Firmware Version (V1.452), and Device MAC (28-5B-6F-D7-94-A7).
- Network Settings:** Fields for Device IP (192.168.1.200), Device Port (4196), Device Web Port (88), Work Mode (TCP Server), Subnet Mask (255.255.255.0), Gateway (192.168.1.1), Destination IP/DNS (192.168.1.3), Destination Port (4196), and IP mode (Static).
- Serial Settings:** Fields for Baudrate (115200), Databits (8), Parity (None), Stopbits (1), and Flow control (None).
- Advanced Settings:** Fields for No-Data-Restart (Disable), No Data Restart Time (300 second), Reconnect-time (12), and a range of 5-1270.
- Multi-Host Settings:** Fields for Protocol (None), Instruction Time out (0), Enable Multi-host (No), and RS485 Conflict Time Gap (0).
- Modify Web Login Key:** Fields for New Key and Input Key Again, with a Submit button below.

3. The serial server parameters can be modified on the web page that appears. For the relevant parameters, please refer to Table 4 for the meaning of the parameters.
4. After modifying the parameters, click the "Submit Modification" button.
5. If configuring and downloading MQTT and Jetson Modbus firmware overwrites the webpage file of the configuration interface, resulting in the failure to open the configuration webpage, please follow the steps below to re-download the webpage file:

- [Configure web file](#) to RS485 TO ETH (B):

The screenshot shows the "Webpage directly download mode" configuration interface. It includes the following sections:

- Webpage directly download mode:** A dropdown menu set to "Webpage directly in local PC:" with a text input field containing "E:\FAQ-QUECTEL\RS485 TO ETH B\2043\_waveshare\_web\_zx".
- Special configs:** A "Clear all" button and four buttons: ".MB config", "MQTT config", "JSON config", and "Reg packet".
- Code file download mode:** A dropdown menu set to "Code file download mode:" with a text input field containing "C:\firmware.bin".
- Download through the network:** Radio button selected. Fields for Device IP address or domain (192.168.10.61) and Download port (Don't modify) (1092).
- Download through serial port:** Radio button unselected. Fields for Serial port (COM1) and Baudrate (115200).
- Device modular/type:** A dropdown menu set to "2003".
- Flash size:** A dropdown menu set to "256" KB.
- DevID:** A text input field containing "285FCAD56BAD" and a "Bind ID" button.

Please close the opened webpage of the module in the browser, before start download.

Download

## Resource

### Documentation

- [User Manual](#)

### Software

- [Vircom](#)
- [Virtual serial port control](#)
- [SSCOM](#)
- [TCP/IP/UDP debug tool](#)
- [Modbus Slave](#)

### Certificate

- [CE EMC](#)

### Related Application

- [RS485 TO ETH \(B\) Connect Alibaba Cloud And EMQX](#)

## FAQ

**Question:** RS485 TO ETH (B) LINK is yellow, what should I do if I cannot access the network?

**Answer:**

- Set static IP, for example:

RS485 TO ETH (B) set to 192.168.1.200 port number 1111.

The computer is set to 192.168.1.199 port number 1111.

- Tested with the TCP server shared by the Internet community: 120.79.100.197 port number 10002.
- If it still doesn't work, please reset to factory settings.

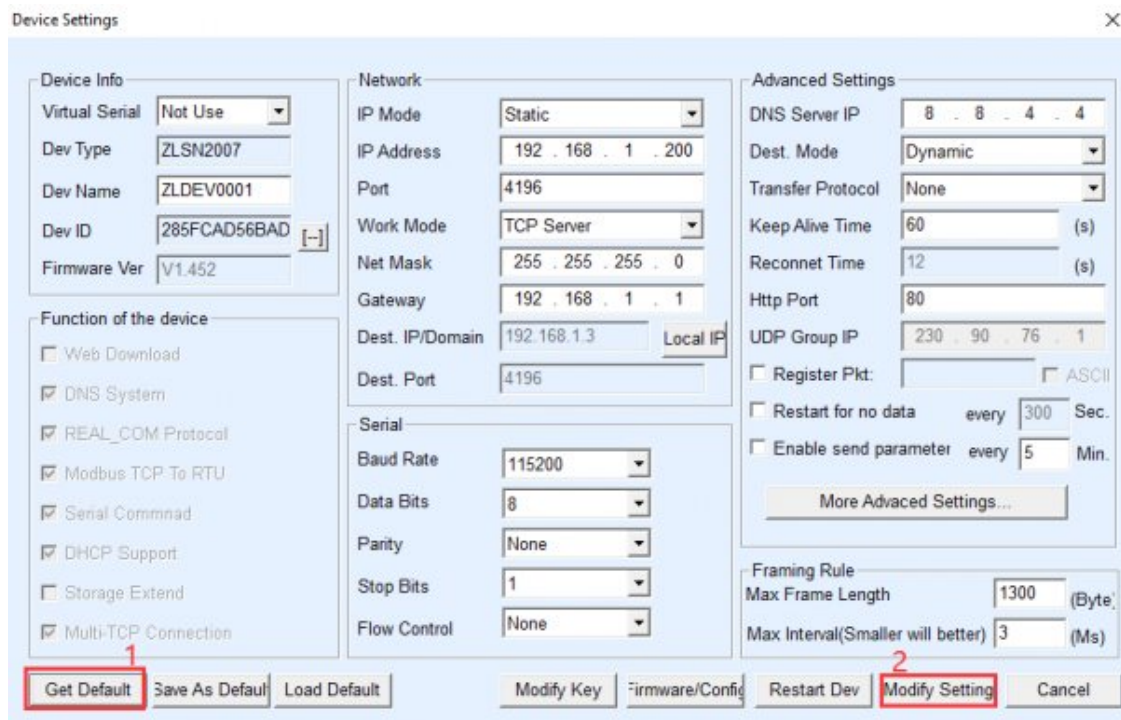
## Question:RS485 TO ETH (B) How to restore factory settings?

### Answer:

1) Short the NC pin for 5 seconds:



2) Get the default parameters and modify the settings:



## Question:What is the power of RS485 TO ETH (B)?

### Answer:

The detailed data is as follows:

	Input Voltage (V)	Input Current (A)	Power
Specifications	9V	0.020	0.18W

Specifications	12V	0.015	0.18W
	24V	0.008	0.19W

**Question:**What should I do if the web configuration interface cannot be opened?

**Answer:**

Configuration and download other firmware such as MQTT and Jetson Modbus cover the configuration interface web page file, you need to re-download [2043\\_waveshare\\_web\\_zx.zip configuration interface web file](#) to RS485 TO ETH (B):

Webpage directly download mode  
 Webpage directly in local PC:  
 ...

Special configs:

Code file download mode  
 Select code file:  
 ...

Download through the network:  Device IP address or domain:  
 Download port (Don't modify):

Download through serial port:  Serial port:  
 Baudrate:

Device modual/type:  DevID:

Flash size:  KB

Please close the opened webpage of the modual in the browser, before start download.

## Technical Support

If you need technical support or have any feedback/review, please click the **Submit Now** button to submit a ticket, Our support team will check and reply to you within 1 to 2 working days. Please be patient as we make every effort to help you to

**Submit Now**

resolve the issue.

Working Time: 9 AM - 6 AM GMT+8 (Monday to Friday)