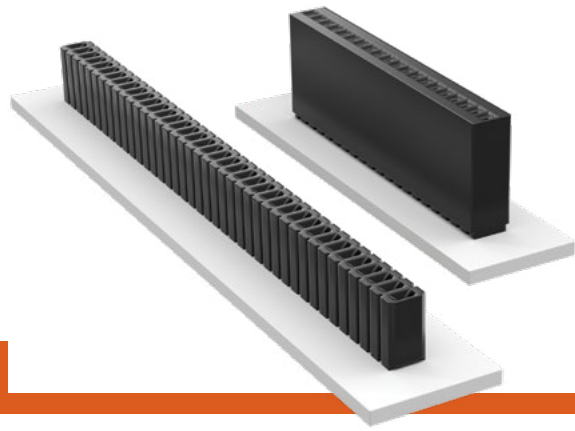


# THROUGH-HOLE MICRO SOCKETS

(1.27 mm) .050" PITCH • SLM/SMS SERIES



## SLM

**Mates:**  
HTMS, TMS, MTMS, DWM,  
HDWM, FTR, HMTMS

## SMS

**Mates:**  
HTMS, TMS, MTMS,  
DWM, HDWM, FTR, TML,  
ZML, HMTM

### SPECIFICATIONS

**Insulator Material:**  
SLM: Black Glass Filled Polyester  
SMS: Black LCP

**Contact Material:**  
Phosphor Bronze

**Plating:**  
Au or Sn over  
50 μ" (1.27 μm) Ni

**Current Rating (SLM/TMS):**  
5.2 A per pin  
(2 pins powered)

**Current Rating (SMS/TMS):**  
5.0 A per pin  
(2 pins powered)

**Operating Temp Range:**  
-55 °C to +125 °C with Gold  
-55 °C to +105 °C with Tin

**Insertion Depth:**  
SLM: (2.03 mm) .080"  
to (3.05 mm) .120"  
SMS: (3.43 mm) .135" to  
(6.35 mm) .250" with  
(0.38 mm) .015" wipe

### PROCESSING

**Lead-Free Solderable:**  
SLM: No, Lead Wave Only  
SMS: Yes

### ALSO AVAILABLE

Other Platings  
(MOQ Required)

**Note:**  
Some lengths, styles and  
options are non-standard,  
non-returnable.

SLM	-	1	NO. PINS PER ROW	-	01	PLATING OPTION	-	ROW OPTION
-----	---	---	------------------	---	----	----------------	---	------------

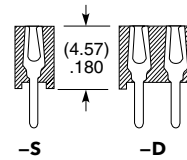
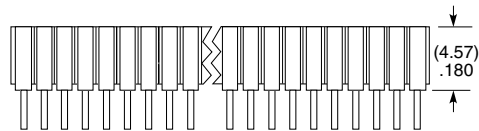
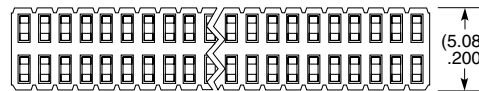
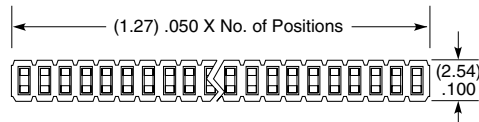
01 thru 50

**-L**  
= 10 μ" (0.25 μm) Gold on contact,  
Matte Tin on tail

**-G**  
= 20 μ" (0.51 μm) Gold on contact,  
Gold flash on balance

**-S**  
= Single Row

**-D**  
= Double Row



SMS	-	1	NO. PINS PER ROW	-	LEAD STYLE	PLATING OPTION	-	ROW OPTION
-----	---	---	------------------	---	------------	----------------	---	------------

01 thru 50

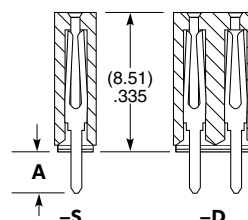
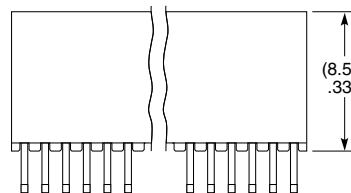
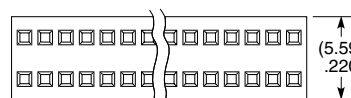
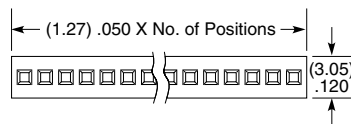
Specify  
LEAD  
STYLE  
from  
chart

**-L**  
= 10 μ" (0.25 μm) Gold on contact,  
Matte Tin on tail

**-G**  
= 20 μ" (0.51 μm) Gold on contact,  
Gold flash on balance

**-S**  
= Single Row

**-D**  
= Double Row



LEAD STYLE	A
-01	(2.54) .100
-02	(4.83) .190

# Mouser Electronics

Authorized Distributor

Click to View Pricing, Inventory, Delivery & Lifecycle Information:

## Samtec:

[SLM-115-01-G-S](#) [SLM-112-01-S-S](#) [SLM-103-01-S-S](#) [SLM-109-01-S-S](#) [SLM-107-01-S-S](#) [SLM-107-01-G-S](#) [SLM-115-01-L-S](#) [SLM-110-01-S-S](#) [SLM-114-01-T-D](#) [SLM-113-01-G-D](#) [SLM-126-01-G-S](#) [SLM-115-01-S-D](#) [SLM-125-01-S-S](#) [SLM-116-01-G-S](#) [SLM-121-01-G-S](#) [SLM-114-01-G-D](#) [SLM-124-01-S-S](#) [SLM-101-01-S-S](#) [SLM-106-01-T-S](#) [SLM-130-01-S-S](#) [SLM-108-01-S-S](#) [SLM-132-01-G-D](#) [SLM-115-01-S-S](#) [SLM-117-01-G-D](#) [SLM-102-01-L-S](#) [SLM-104-01-G-S](#) [SLM-140-01-G-D](#) [SLM-109-01-G-S](#) [SLM-108-01-T-S](#) [SLM-105-01-L-S](#) [SLM-125-01-G-D](#) [SLM-110-01-G-S](#) [SLM-120-01-F-D](#) [SLM-125-01-G-S](#) [SLM-108-01-G-D](#) [SLM-103-01-T-D](#) [SLM-132-01-S-S](#) [SLM-104-01-S-D](#) [SLM-110-01-F-D](#) [SLM-132-01-T-S](#) [SLM-108-01-L-S](#) [SLM-118-01-S-S](#) [SLM-134-01-G-S](#) [SLM-124-01-G-S](#) [SLM-105-01-G-D](#) [SLM-112-01-T-S](#) [SLM-118-01-G-S](#) [SLM-110-01-S-D](#) [SLM-143-01-G-S](#) [SLM-109-01-T-S](#) [SLM-114-01-G-S](#) [SLM-105-01-G-S](#) [SLM-109-01-S-D](#) [SLM-106-01-S-S](#) [SLM-112-01-L-S](#) [SLM-103-01-G-D](#) [SLM-116-01-G-D](#) [SLM-130-01-G-D](#) [SLM-111-01-S-D](#) [SLM-103-01-T-S](#) [SLM-104-01-G-D](#) [SLM-106-01-S-D](#) [SLM-104-01-S-S](#) [SLM-111-01-G-D](#) [SLM-120-01-S-D](#) [SLM-112-01-G-S](#) [SLM-106-01-G-D](#) [SLM-107-01-G-D](#) [SLM-110-01-T-S](#) [SLM-130-01-L-S](#) [SLM-113-01-G-S](#) [SLM-102-01-G-D](#) [SLM-115-01-T-S](#) [SLM-120-01-S-S](#) [SLM-105-01-S-D](#) [SLM-106-01-L-S](#) [SLM-105-01-S-S](#) [SLM-111-01-S-S](#) [SLM-115-01-G-D](#) [SLM-108-01-S-D](#) [SLM-108-01-G-S](#) [SLM-108-01-T-D](#) [SLM-104-01-L-S](#) [SLM-114-01-F-D](#) [SLM-114-01-S-D](#) [SLM-106-01-G-S](#) [SLM-118-01-T-S](#) [SLM-127-01-S-D](#) [SLM-112-01-G-D](#) [SLM-110-01-T-D](#) [SLM-123-01-G-S](#) [SLM-104-01-T-S](#) [SLM-114-01-S-S](#) [SLM-125-01-S-D](#) [SLM-130-01-S-D](#) [SLM-132-01-G-S](#) [SLM-110-01-G-D](#) [SLM-103-01-G-S](#) [SLM-102-01-S-S](#) [SLM-116-01-S-D](#)