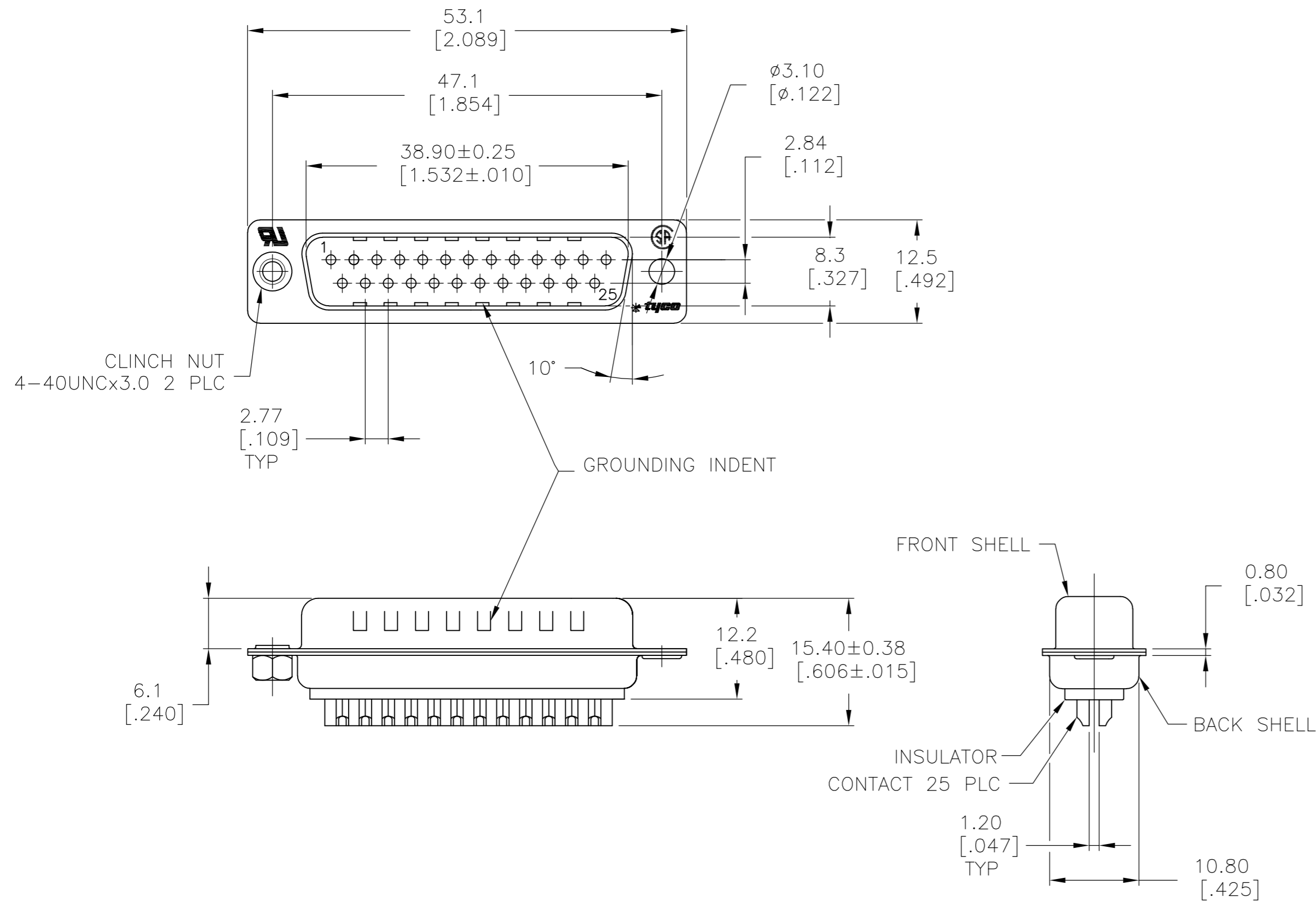


THIS DRAWING IS UNPUBLISHED. RELEASED FOR PUBLICATION  
 © COPYRIGHT BY TYCO ELECTRONICS CORPORATION. ALL RIGHTS RESERVED.

LOC		DIST		REVISIONS			
P	LTR	DESCRIPTION		DATE	DWN	APVD	
BD	00	T		REVISED PER ECO-08-025671	16OCT08	HMR	JO



- 1 MATERIAL:  
 FRONT INSULATOR: PBT, 30 %GF, UL94V-0, BLACK COLOR  
 BACK INSULATOR: PBT, 30 %GF, UL94V-0, BLACK COLOR  
 CONTACT: BRASS  
 FRONT SHELL: STEEL  
 BACK SHELL: STEEL  
 CLINCH NUTS: BRASS
- 2 FINISH:  
 CONTACT: GOLD PLATING 0.00002[.0000008] MIN ON CONTACT AREA 0.00229 [.000090] MIN TIN-LEAD PLATING ALL OVER 0.00127[.000050] MIN NICKEL
- 3 CONTACT: GOLD PLATING 0.00076[.000030] MIN ON CONTACT AREA 0.00229 [.000090] MIN TIN-LEAD PLATING ALL OVER 0.00127[.000050] MIN NICKEL
- 4 SHELL: TIN 0.0241[.000095] MIN FULL SHELL
- 5 SHELL: BLUE ZINC: 0.00508[.000200] - 0.00762[.000300] OVER ENTIRE SHELL
- 6 CONTACT: GOLD PLATING 0.00002[.0000008] MIN ON CONTACT AREA 0.00229 [.000090] MIN TIN-COPPER PLATING ALL OVER 0.00127[.000050] MIN NICKEL
- 7 CLINCH NUTS: NICKEL PLATING .00305-.00508[.000120-.000200]
- 8 SPECIFICATION  
 ELECTRICAL CHARACTERISTICS: CURRENT RATING: 3 AMPERES  
 DIELECTRIC WITHSTANDING VOLTAGE: AC 1000V r.m.s  
 INSULATION RESISTANCE: 5000 MEGOHMS MINIMUM AT DC 500V  
 CONTACT RESISTANCE: 10 MILLIOHMS MAXIMUM.
- 9 ROHS 2002/95/EC COMPLIANT
- 10 PLUG ASSEMBLY MATES WITH ANY 25 POSITION RECEPTACLE IN AMPLIMITE SERIES  
 SOLDER CUP WILL ACCOMMODATE 20 MAX AWG WIRE.
- 11 CONTACT: GOLD PLATING 0.00076[.000030] MIN ON CONTACT AREA 0.00229[.000090] MIN TIN-COPPER ALL OVER 0.00127[.000050] MIN NICKEL PLATING

STANDARD	NO	YES	CLINCH NUTS	GROUNDING INDENTS	CONTACTS	SHELLS	PART NO.
STANDARD	NO	NO	CLINCH NUTS	GROUNDING INDENTS	CONTACTS	SHELLS	5-747912-4
STANDARD	YES	YES	CLINCH NUTS	GROUNDING INDENTS	CONTACTS	SHELLS	5-747912-7
STANDARD	NO	YES	CLINCH NUTS	GROUNDING INDENTS	CONTACTS	SHELLS	5-747912-5
STANDARD	NO	YES	CLINCH NUTS	GROUNDING INDENTS	CONTACTS	SHELLS	5-747912-2
SUPERSEDED TO 5-747912-2	NO	YES	CLINCH NUTS	GROUNDING INDENTS	CONTACTS	SHELLS	747912-8
SUPERSEDED TO 5-747912-7	STANDARD	YES	CLINCH NUTS	GROUNDING INDENTS	CONTACTS	SHELLS	747912-7
SUPERSEDED TO 5-747912-5	STANDARD	NO	CLINCH NUTS	GROUNDING INDENTS	CONTACTS	SHELLS	747912-5
SUPERSEDED TO 5-747912-4	STANDARD	NO	CLINCH NUTS	GROUNDING INDENTS	CONTACTS	SHELLS	747912-4
SUPERSEDED TO 5-747912-2	STANDARD	NO	CLINCH NUTS	GROUNDING INDENTS	CONTACTS	SHELLS	747912-2

THIS DRAWING IS A CONTROLLED DOCUMENT.		DWN M.BINNER 03MAR03	Tyco Electronics Corporation Harrisburg, PA 17105-3608	
DIMENSIONS: mm [INCHES]		CHK R.BENDORF 05MAR03	NAME PLUG ASSEMBLY, SOLDER CUP, SIZE 3, 25 POSN, HD-20, AMPLIMITE	
TOLERANCES UNLESS OTHERWISE SPECIFIED: 0 PLC ± - 1 PLC ± 0.25 2 PLC ± 0.13 3 PLC ± 0.05 4 PLC ± - ANGLES ± 4°		APVD R.BENDORF 05MAR03	PRODUCT SPEC	
MATERIAL 1		FINISH SEE TABLE	APPLICATION SPEC	RESTRICTED TO
CUSTOMER DRAWING		WEIGHT -	SCALE A2 00779 C=747912	SCALE 2:1
			SHEET 1 OF 1	REV T