

Number of contacts : 55 – 220 signal (77 – 308 fully shielded); or customised

Contact spacing : 2.00 mm

Working current : 1.5 ADC (Signal) max.

Test voltage $U_{r.m.s.}$: AC 750 V min.

Contact resistance : 20 mΩ max.

Insulation resistance: 10 GΩ min.

Temperature range : – 55 °C ... + 125 °C

Durability as per IEC 61076-4-101 : Performance level 2 = 250 mating cycles in total.

First 125 mating cycles, then 4 days gas test using 0.5 ppm SO₂ and 0.1 ppm H₂S (at 25 ± 2 °C and 75 ± 3 % humidity).
Measurement of contact resistance.

The remaining 125 mating cycles are subject to measurement of contact resistance and visual inspection. No abrasion of the contact finish through to the base material. No functional impairment.

Performance level 1 = 500 mating cycles in total.

First 250 mating cycles, then 10 days gas test using 0.5 ppm SO₂ and 0.1 ppm H₂S (at 25 ± 2 °C and 75 ± 3 % humidity).
Measurement of contact resistance.

The remaining 250 mating cycles are subject to measurement of contact resistance and visual inspection. No abrasion of the contact finish through to the base material. No functional impairment.

Press-in force* : 100 N/pin max.

Parameters like hole dimension, board thickness and hole surface influence the resulting press-in force.

Typical measurements

| Board finish | Press-in force (N/pin) |
|--------------|------------------------|
| tin | 40 |
| bare copper | 35 |
| gold | 33 |

Retention force : 20 N/pin min.

Mating force : 0.75 N/pin max.

Withdrawal force : 0.15 N/pin min.

Materials

Mouldings : Thermoplastic resin, glass-fibre filled, UL 94-V0

Contacts : Copper alloy

Contact surface : Au/Ni

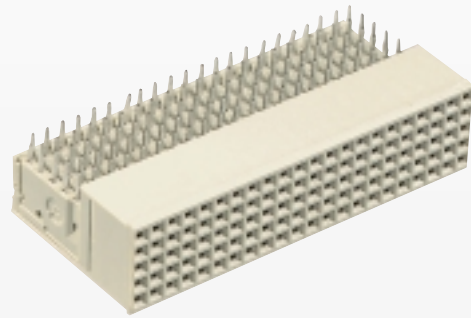
Packaging : Tube (standard) or cardboard box

Approvals

Underwriters

Laboratories Inc.® :  us with their respective ratings documented in file E 102079

VDE, IECQ, CECC : Technology approval certificate, no. 127250 and no. 127244



Types with 5+2 rows

Female connectors, angled

| Identification | No. of contacts | Contact length [mm] | | Part number |
|--|-----------------|---------------------|------------------|---|
| | | | termination side | |
| Type B | 95 | 3.4 | | 17 25 095 1101 17 25 095 2101 |
| Type B, with pre-installed upper shield | 95 | 3.4 | | 17 25 095 1102 17 25 095 2102 |
| Lower shield for type B connectors with 95 contacts | | | | 17 25 000 4102 |
| Type B | 110 | 3.4 | | 17 24 110 1101 17 24 110 2101 |
| Type B, with pre-installed upper shield | 110 | 3.4 | | 17 24 110 1102 17 24 110 2102 |
| Lower shield for type B connectors with 110 contacts | | | | 17 24 000 4102 |
| Type B | 125 | 3.4 | | 17 22 125 1101 17 22 125 2101 |
| Type B, with pre-installed upper shield | 125 | 3.4 | | 17 22 125 1102 17 22 125 2102 |
| Lower shield for type B connectors with 125 contacts | | | | 17 22 000 4102 |

| Contact positions | X ₁ | X ₂ |
|-------------------|----------------|---------------------------|
| 19 | 37.9 | 18 x $\frac{2}{2}$ (= 36) |
| 22 | 43.9 | 21 x $\frac{2}{2}$ (= 42) |
| 25 | 49.9 | 24 x $\frac{2}{2}$ (= 48) |

Dimensions [mm]

