

Series 803 Mighty Mouse ¼ Turn Bayonet PC Tail and Solder Cup Receptacle 803-005 and 803-015 Ordering Information



Printed Circuit Board/ Solder Cup Receptacles feature low profile shells for minimum protrusion inside enclosures and integral standoffs for board washout. Contacts are non-removable.

Water Immersion, Unmated Specify 803-005 connectors for applications where open face water immersion is not a requirement. For MIL-STD-810 Method 512G immersion requirements, specify 803-015 watertight connectors. These 803-015 connectors are specially sealed ("MOD-518") and are 100% tested to maintain a helium leak rate of 1×10^{-4} cc/second at one atmosphere pressure differential from -40°C to +70°C.

NOTE: mated connectors are not submersible.

How To Order

Sample Part Number	803-005	-02	ZN	6-7	S	N
Series	803-005 = Receptacle, Solder Cup or PCB Contacts 803-015 = Receptacle, Solder Cup or PCB Contacts; Watertight					
Shell Style (See Table I)	-02 = Flange Mount -07 = Jam Nut (See Page					
Shell Material and Finish	C = Aluminum / Black Anodize (Non-Conductive); RoHS Compliant M = Aluminum / Electroless Nickel; RoHS Compliant MT = Aluminum / Nickel-PTFE RoHS Compliant NF = Aluminum / Cadmium with Olive Drab Chromate ZNU = Aluminum / Zinc-Nickel with Black Chromate Z1 = Stainless Steel / Passivated; RoHS Compliant					
Shell Size - Insert Arrangement	See Contact Arrangements Page F-2					
Contact Type	P = Pin, PC Tail S = Socket PC Tail		E = Pin, Solder Cup F = Socket, Solder Cup			
Shell Key Positions (See Table II)	N = Normal X = Pos. X Y = Pos. y Z = Pos. Z					

F

Table I: Shell Style

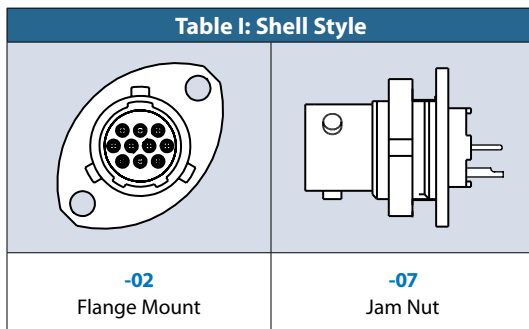


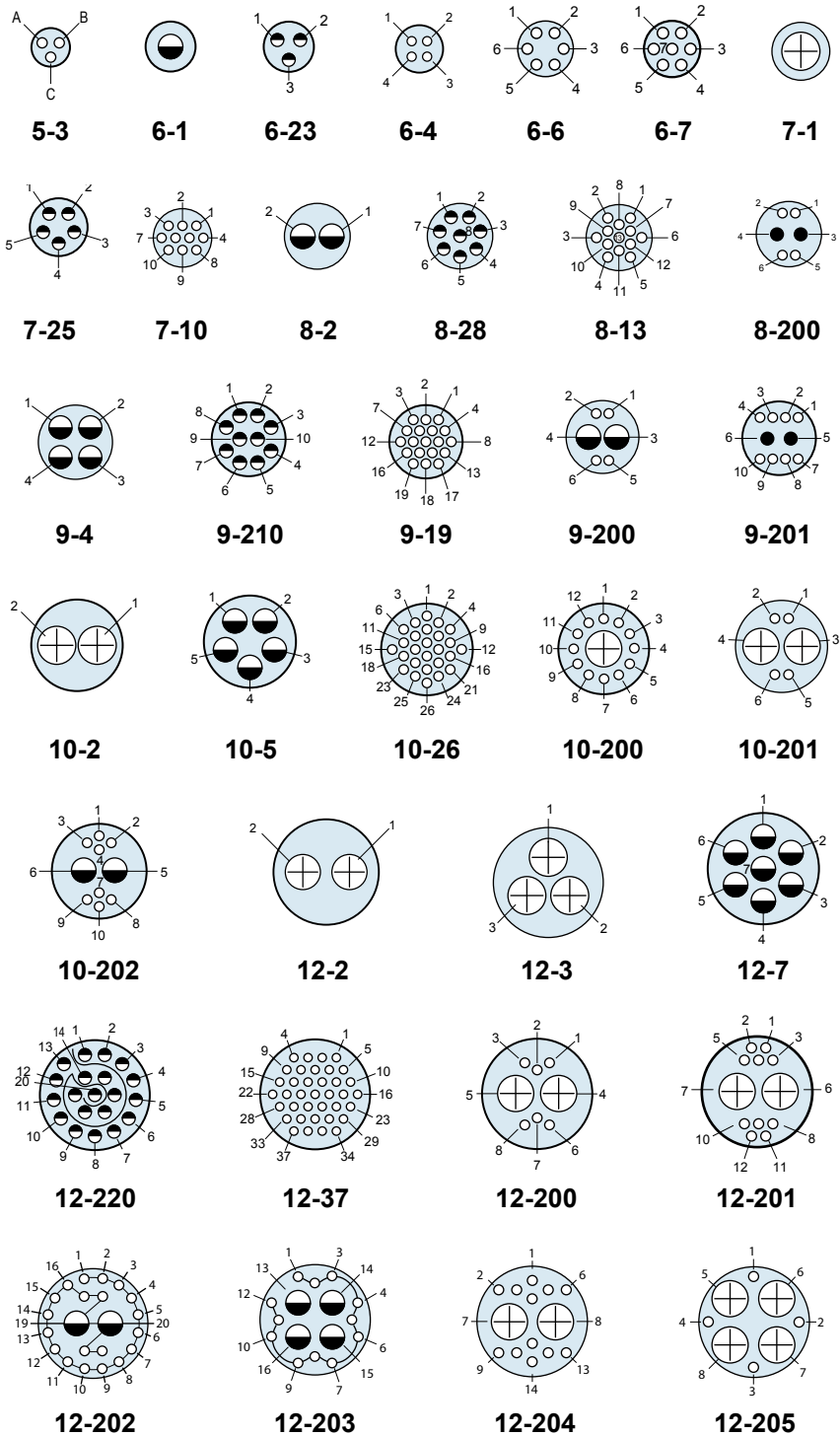
Table II: Alternate Key Positions

Pos.	A°	B°
N	150°	210°
X	75°	210°
Y	95°	230°
Z	140°	275°

Dimensions in Inches (millimeters) are subject to change without notice.

Contact Arrangements					
Contact Arr.	No. of Contacts				
	#23	#20	#20HD	#16	#12*
5-3	3				
6-1				1	
6-23			3		
6-4	4				
6-6	6				
6-7	7				
7-1					1
7-25			5		
7-10	10				
8-2				2	
8-28			8		
8-13	13				
8-200	4	2			
9-4				4	
9-210			10		
9-19	19				
9-200	4			2	
9-201	8	2			
10-2					2
10-5				5	
10-26	26				
10-200	12				1
10-201	4				2
10-202	8			2	
12-2					2
12-3					3
12-7				7	
12-220			20		
12-37	37				
12-200	6				2
12-201	10				2
12-202	20			2	
12-203	12			4	
12-204	12				2
12-205	4				4
14-5					5
14-12				12	

Mating Face View of Pin Connector (Socket connector numbers are reversed)



*All arrangements with #12 contacts available with keyed Twinax contacts. Use mode code -688

Contact Legend

#23 ◯ #20HD ● #20 ● #16 ◐ #12 ⊕

Dimensions in Inches (millimeters) are subject to change without notice.

Series 803 Mighty Mouse 1/4 Turn Bayonet Couplings Contact Arrangements



Series 803

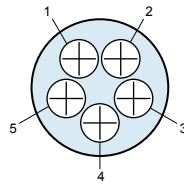
Contact Arrangements					
Contact Arr.	No. of Contacts				
	#23	#20	#20HD	#16	#12*
14-235			35		
14-55	55				
14-204	40			2	
14-205	32			4	
14-206	34				2
14-207	20				4

*All arrangements with #12 contacts available with keyed Twinax contacts. Use mode code -688

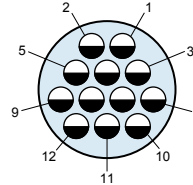
Contact Legend

#23° #20HD● #20● #16● #12⊕

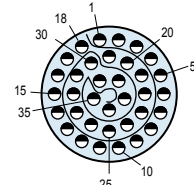
Mating Face View of Pin Connector (Socket connector numbers are reversed)



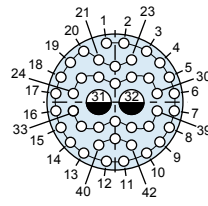
14-5



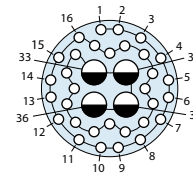
14-12



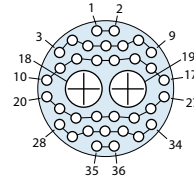
14-235



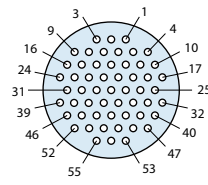
14-204



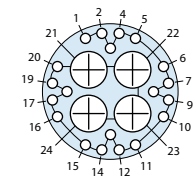
14-205



14-206

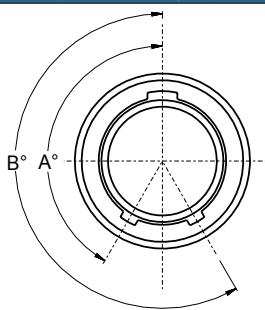


14-55



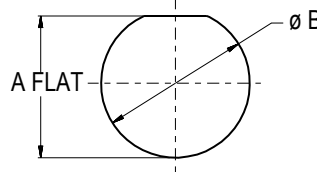
14-207

Series 803 Plug Key Positions



Pos.	A°	B°
N	150°	210°
X	75°	210°
Y	95°	230°
Z	140°	275°

Jam Nut Panel Cutout



Shell Size	A Flat		Ø B	
	In. ± .002	mm. ± 0.05	In.	mm.
5	.355	9.02	.382	9.70
6	.415	10.54	.445	11.30
7	.541	13.74	.572	14.53
8	.601	15.27	.635	16.13
9	.601	15.27	.643	16.33
10	.729	18.52	.760	18.29
12	.850	21.59	.885	22.48
14	1.031	26.19	1.072	27.23

Dimensions in Inches (millimeters) are subject to change without notice.



Mouser Electronics

Authorized Distributor

Click to View Pricing, Inventory, Delivery & Lifecycle Information:

Glenair:

[803-005-02M9-19PX](#) [803-005-07M7-10PN](#) [803-005-02M9-19SY](#) [803-005-02M9-19SZ](#) [803-005-07M9-19EN](#) [803-005-02M9-19PN](#) [803-005-07ZNU7-10PN](#) [803-005-07ZNU9-19PN](#) [803-005-07ZNU8-13PN](#) [803-005-07ZNU6-7PN](#)
[803-005-07ZNU9-19SN](#) [803-005-07M12-37EZ](#)