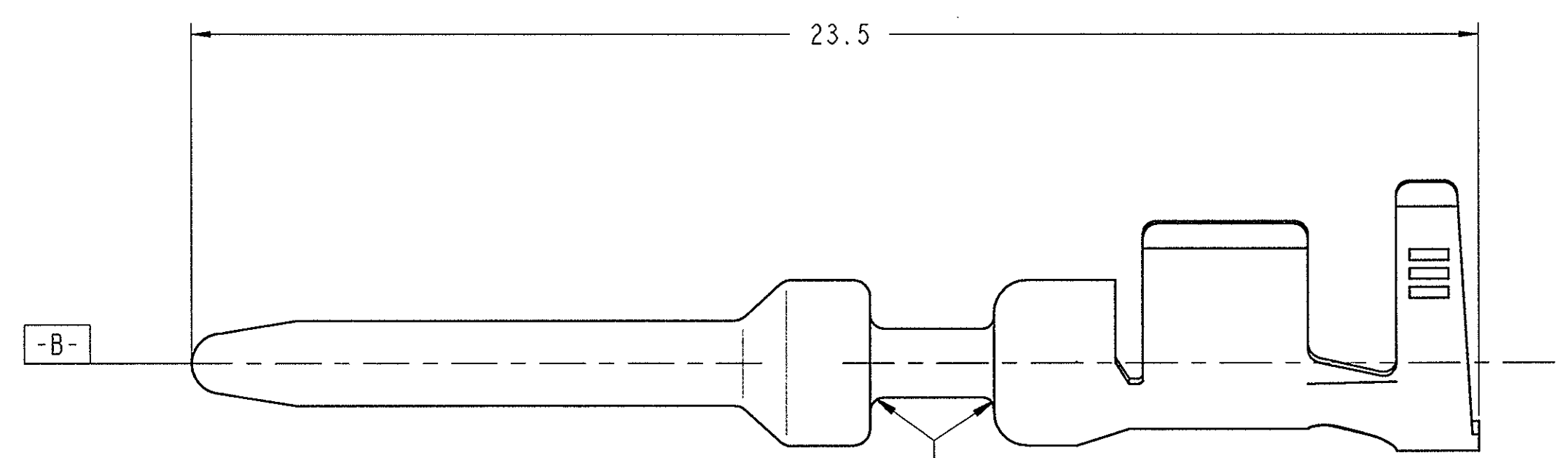


LOC	DIST	REVISIONS			
P	LYR	DESCRIPTION	DATE	DWN	APVD
A		EG00-2904-01	04OCT2001	SS	JE
A1		EG00-3314-01	08NOV2001	CLD	JE
A2		REVISED FOR ECR-06-018431	28SEPT2006	M. P.	R. M.



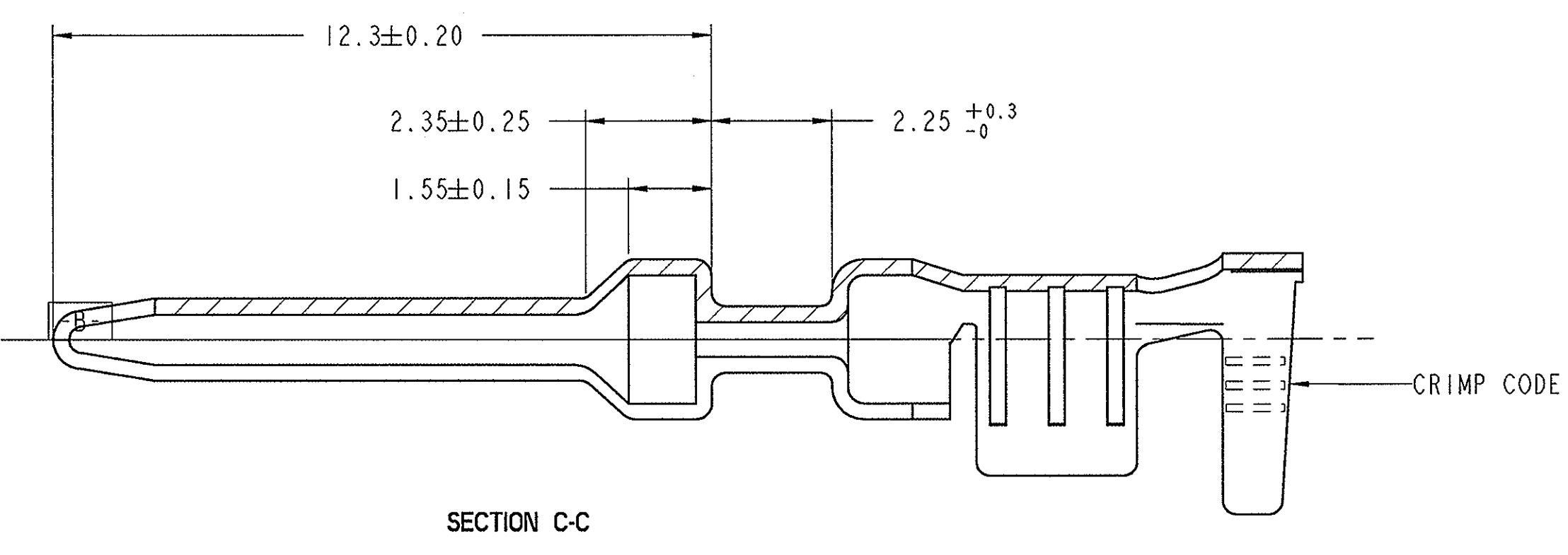
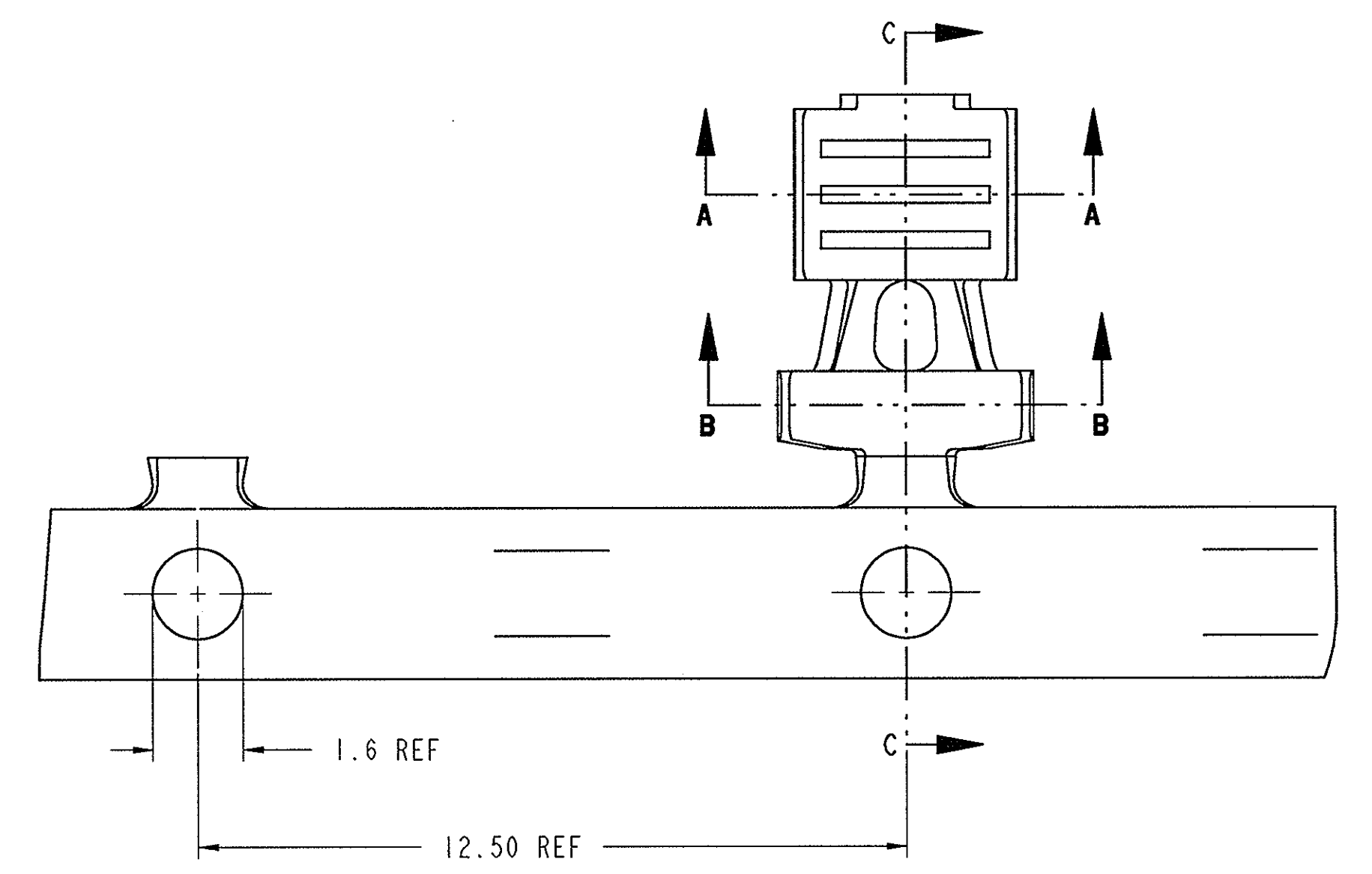
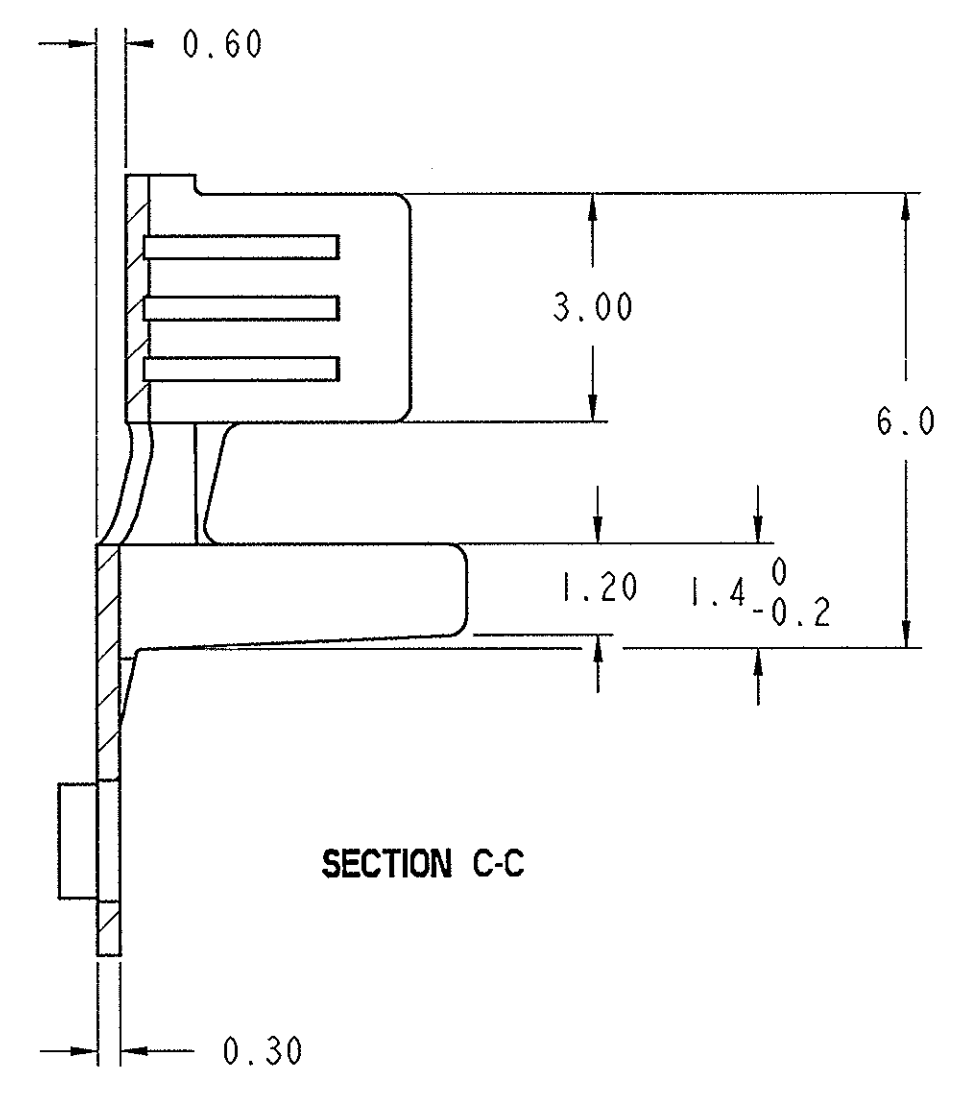
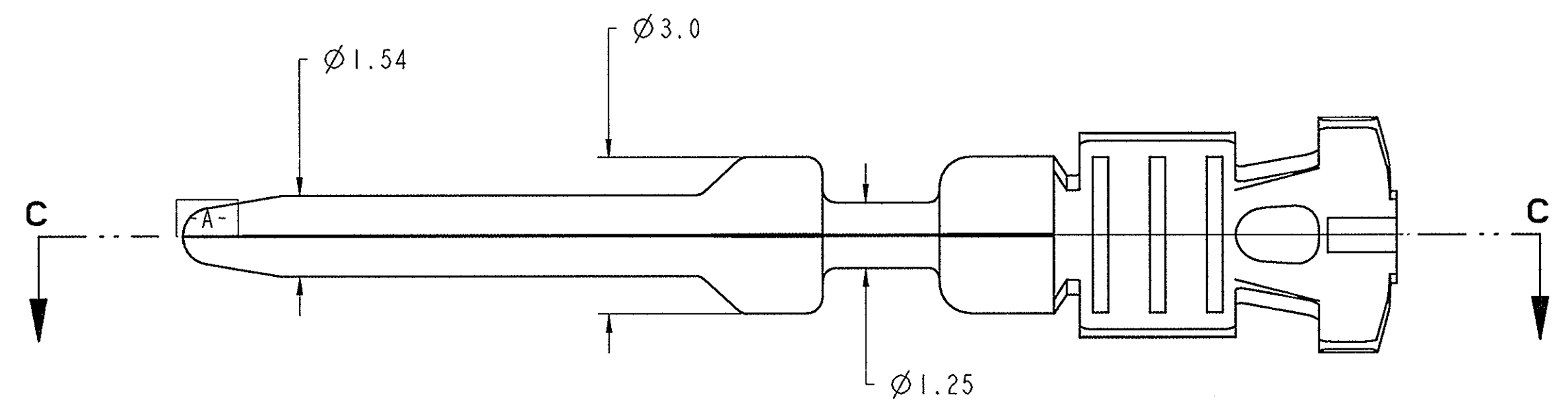
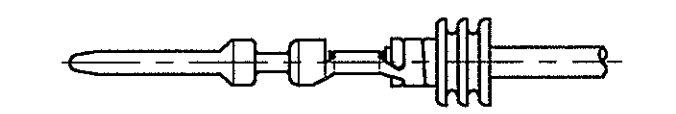
NECK DOWN AREA OF TERMINAL MUST NOT BREAK-OFF OR FRACTURE WHEN FRONT OF TERMINAL IS BENT IN ANY DIRECTION TO AN ANGLE OF 20° MIN. OFF THE CENTERLINE OF TERMINAL.

CRIMP TYPE	CRIMP AREA DIMENSION						CRIMP CODE
	Bc	Dc	Hc	Bi	Di	Hi	
c	3.70	1.80	3.90	4.70	2.60	4.90	[Symbol]
	±0.15	REF	±0.15	±0.15	REF	±0.15	
b	2.60	1.20	2.90	3.60	2.00	4.00	[Symbol]
	±0.15	REF	±0.15	±0.15	REF	±0.15	
d	2.00	0.80	2.20	2.80	1.60	3.00	[Symbol]
	±0.15	REF	±0.15	±0.15	REF	±0.15	

FULL SIZE VIEWS  
SCALE 1.000



FULL ASSY VIEW  
WATERPROOF  
SCALE 2.000

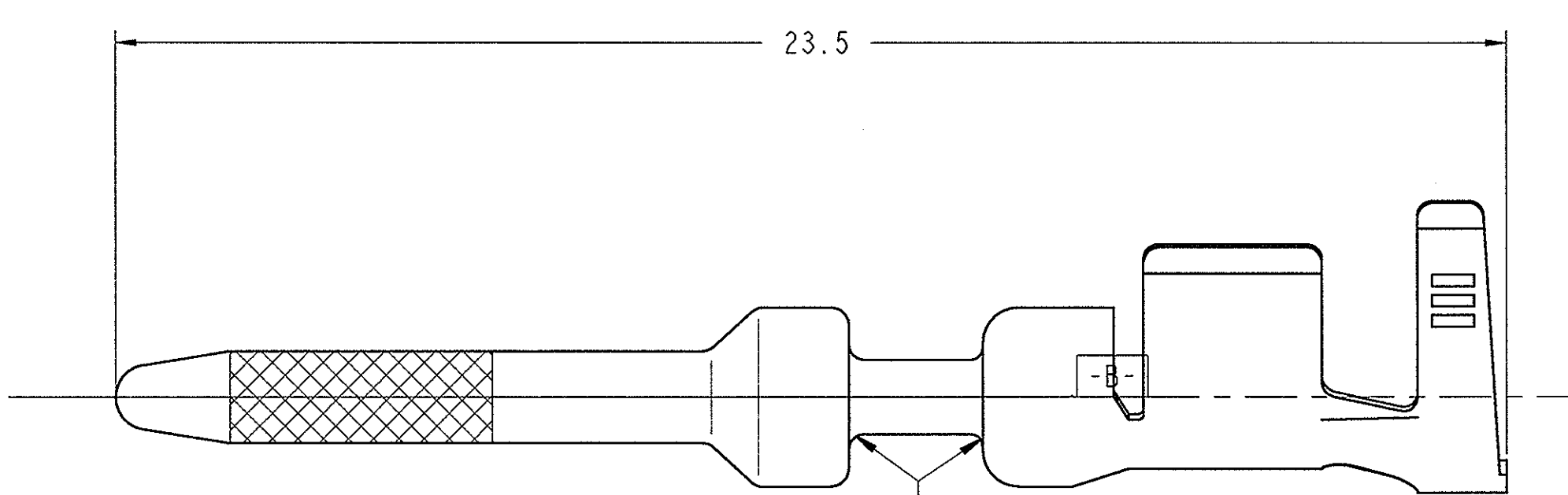


- 1 SUPERSEDES 2-1437709-2
- 2 SUPERSEDES 2-1437709-3
- 3 SUPERSEDES 2-1437709-4

PART AS SUPPLIED							COMPONENTS		MATERIALS	COMPONENTS SUPPLIED APART		TO FIT IN CAVITY	
P/N	DESCRIPTION	WATERPROOF	WIRE CROSS SEC. AREA	CRIMP CODE	CRIMP SPEC.	WEIGHT	TERMINAL	WIRE SEAL	TERMINAL	WIRE SEAL	TYPE	DESCRIPTION	
1-1437709-1	TERMINAL MALE TIN PLT.	YES	0.22-0.35mm <sup>2</sup>	[Symbol]	AC/T/18/95	0.302gr.	I	SEE SHEET	DIN 17670 (CuSn6) TIN PLATED BRIGHT	1-1437713-1 (0.22-0.35) BLACK	AC/T/20/95	CAVITY TERMINAL MALE	
1-1437709-2	TERMINAL MALE TIN PLT.		0.50-1.00mm <sup>2</sup>	[Symbol]		0.322gr.	I	1-1437713-2 (0.50-1.00) RED					
1-1437709-3	TERMINAL MALE TIN PLT.		1.50-2.50mm <sup>2</sup>	[Symbol]		0.343gr.	I	1-1437713-3 (1.50) BLUE					
1-1437709-1	TERMINAL MALE TIN PLT.	NO	0.22-0.35mm <sup>2</sup>	[Symbol]	AC/T/18/95	0.302gr.	I	NOT USED					
1-1437709-2	TERMINAL MALE TIN PLT.		0.50-1.00mm <sup>2</sup>	[Symbol]		0.322gr.	I						
1-1437709-3	TERMINAL MALE TIN PLT.		1.50-2.50mm <sup>2</sup>	[Symbol]		0.343gr.	I						

DIMENSIONS:		TOLERANCES UNLESS OTHERWISE SPECIFIED:		DWN: S. Storch 02OCT2001		tyco Electronics AMP GmbH	
mm		0 PLC ±0.3		CHK: J. Evans 08NOV2001		D - 64625 Bensheim	
[Symbol]		1 PLC ±0.1		APVD: J. Evans 08NOV2001		I,6 SYSTEM TERMINAL MALE TIN PLATED	
MATERIAL:		2 PLC ±		PRODUCT SPEC:		SIZE: CAGE CODE: DRAWING NO: RESTRICTED TO	
		3 PLC ±		APPLICATION SPEC:		A1 00779 C-1418070	
		4 PLC ±		WEIGHT:		SCALE: 10:1 SHEET 1 OF 2 REV A2	
		ANGLES FINISH:		CUSTOMER DRAWING:			

LOC		DIST		REVISIONS			
A	1	P	LTR	DESCRIPTION	DATE	DWN	APVD
		-	-	- SEE SHEET 1 -	-	-	-

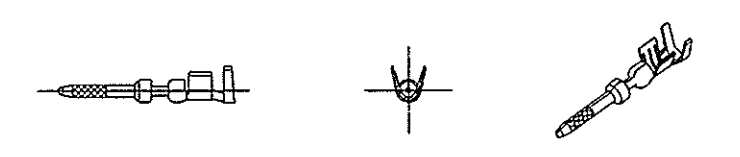


NECK DOWN AREA OF TERMINAL MUST NOT BREAK-OFF OR FRACTURE WHEN FRONT OF TERMINAL IS BENT IN ANY DIRECTION TO AN ANGLE OF 20° MIN. OFF THE CENTERLINE OF TERMINAL.

CRIMP TYPE	CRIMP AREA DIMENSION						CRIMP CODE		
	Bc	Dc	Hc	Bi	Di	Hi			
I	c	3.70 ±0.15	1.80 REF	3.90 ±0.15	4.70 ±0.15	2.60 REF	4.90 ±0.15	≡	
	b	2.60 ±0.15	1.20 REF	2.90 ±0.15	3.60 ±0.15	2.00 REF	4.00 ±0.15		≡
	a	2.00 ±0.15	0.80 REF	2.20 ±0.15	2.80 ±0.15	1.60 REF	3.00 ±0.15		

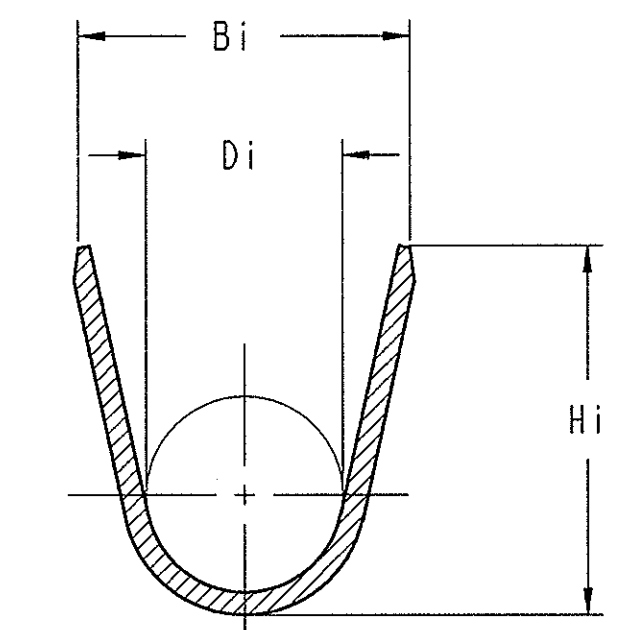
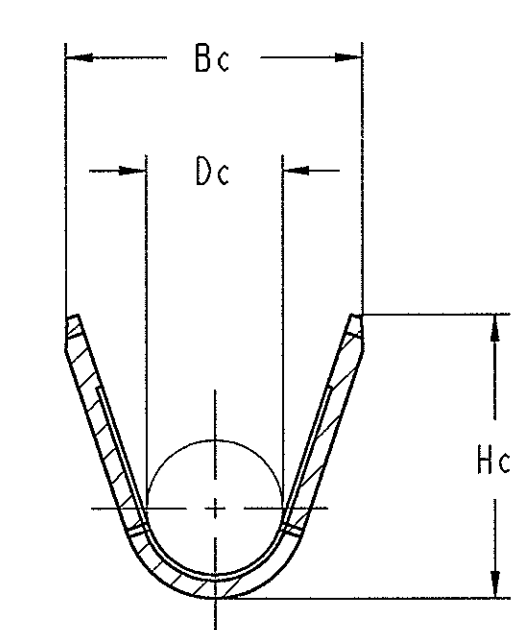
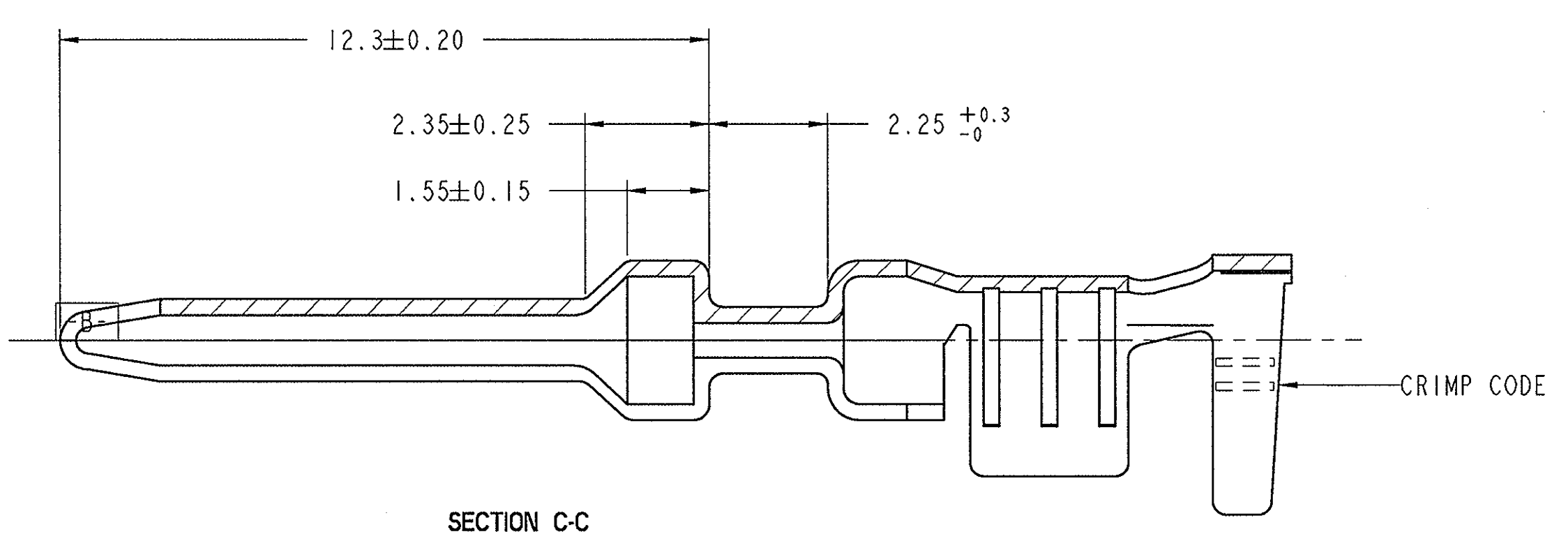
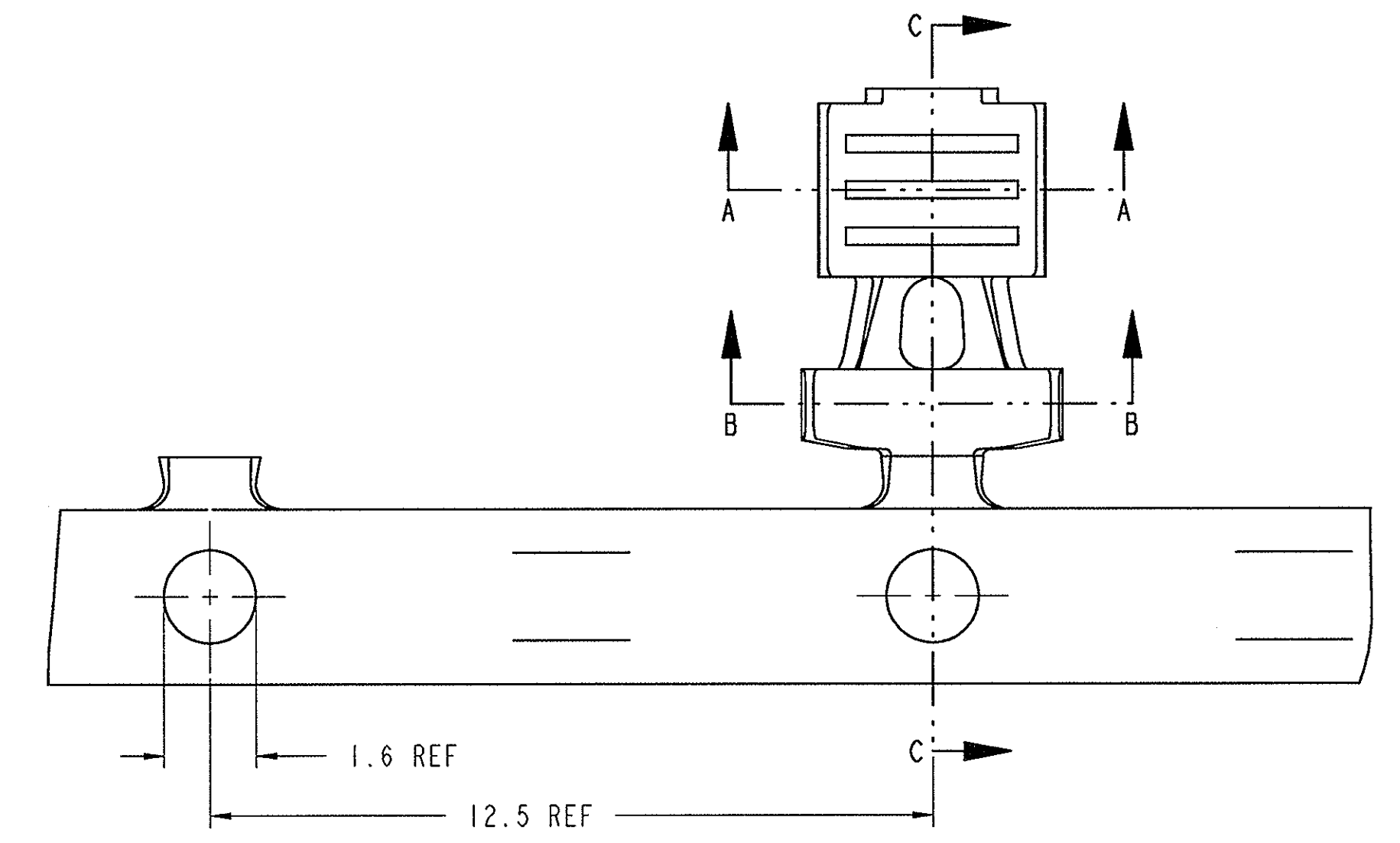
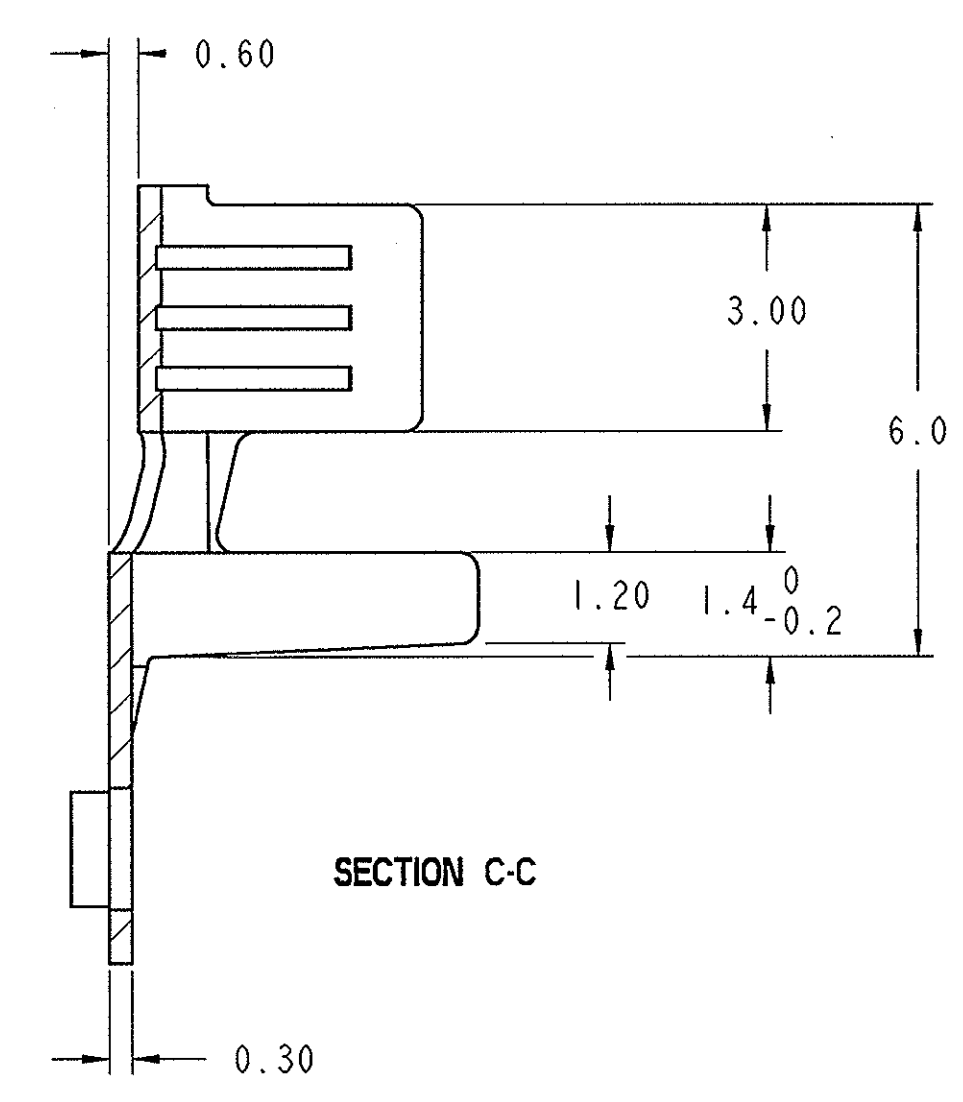
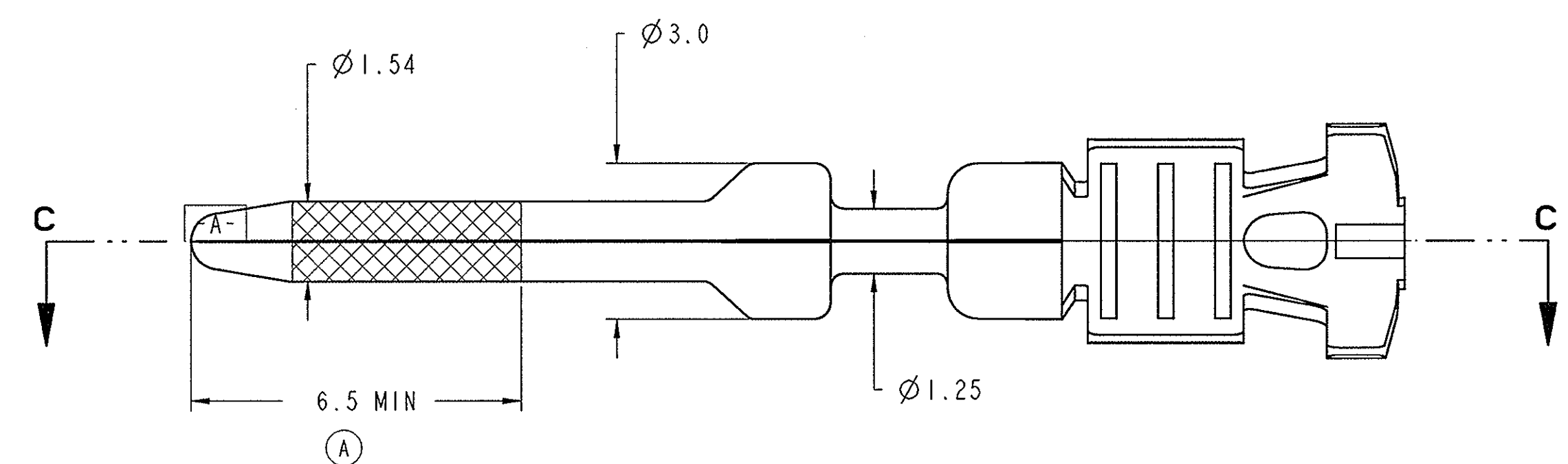
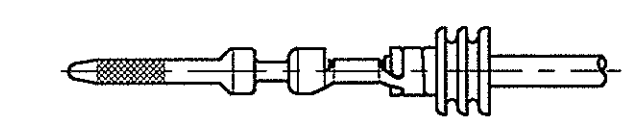
FULL SIZE VIEWS

SCALE 1.000



FULL ASSY VIEW  
WATERPROOF

SCALE 2.000



⚠ SUPERSEDES I-1437709-8

PART AS SUPPLIED							COMPONENTS		MATERIALS	COMPONENTS SUPPLIED APART		TO FIT IN CAVITY	
P/N	DESCRIPTION	WATERPROOF	WIRE CROSS SEC. AREA	CRIMP CODE	CRIMP SPEC.	WEIGHT	TERMINAL	WIRE SEAL	TERMINAL	WIRE SEAL	TYPE	DESCRIPTION	
0-1437709-6	TERMINAL MALE GOLD PLT.	YES	0.22-0.35mm <sup>2</sup>	≡	AC/T/18/95	0.302gr.	I	SEE SHEET	DIN 17670 (CuSn6) GOLD PLATED AT LOCATION	I-1437713-1 (0.22-0.35) BLACK	AC/T/20/95	CAVITY TERMINAL MALE	
0-1437709-7	TERMINAL MALE GOLD PLT.		0.50-1.00mm <sup>2</sup>	≡			I-1437713-2 (0.50-1.00) RED						
0-1437709-6	TERMINAL MALE GOLD PLT.	NO	0.22-0.35mm <sup>2</sup>	≡	AC/T/18/95	0.302gr.	I	NOT USED	ⓐ TIN PLATED MATTE	I-1437713-3 (1.50) BLUE			
0-1437709-7	TERMINAL MALE GOLD PLT.		0.50-1.00mm <sup>2</sup>	≡									

DIMENSIONS: mm		TOLERANCES UNLESS OTHERWISE SPECIFIED:		DWN S.Storch 020C2001		tyco Electronics AMP GmbH	
0 PLC	±	0.3	±	CHR J.Evans 08NOV2001	tyco Electronics D - 64625 Bensheim		
1 PLC	±	0.1	±	APVD J.Evans 08NOV2001	NAME		
2 PLC	±	0.1	±	PRODUCT SPEC	I,6 SYSTEM TERMINAL MALE GOLD PLATED		
3 PLC	±	0.1	±	APPLICATION SPEC	SIZE CAGE CODE DRAWING NO		
4 PLC	±	0.1	±	WEIGHT	A1 00779 C=1418070		
ANGLES	±	1°	±	CUSTOMER DRAWING	RESTRICTED TO		
MATERIAL					SCALE 10:1 SHEET 2 OF 2 REV A2		