

Rittal – The System.

Faster – better – everywhere.

Lock insert – SZ 2460.650

Date : Apr 27, 2021

ENCLOSURES

POWER DISTRIBUTION

CLIMATE CONTROL

IT INFRASTRUCTURE

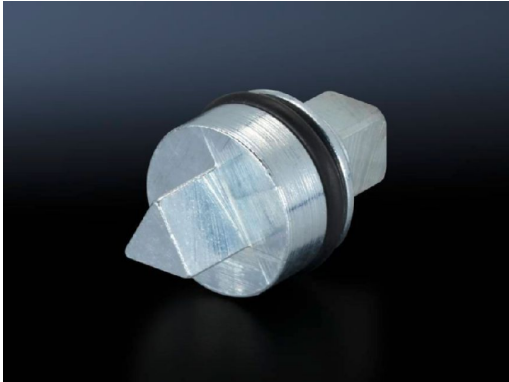
SOFTWARE & SERVICES

FRIEDHELM LOH GROUP



Lock insert – SZ 2460.650

created: 27.04.2021 build on www.rittal.com/uk-en



Product description

Design: A

Material: Die-cast zinc

Product description

To fit:

- Enclosure type: AX with cam
- Enclosure type: AX with 3-point lock system
- Enclosure type: KXE-Box
- Enclosure type: PC enclosure keyboard drawer or fold-out tray
- Enclosure type: TP desk section and console
- Enclosure type: TP universal console
- Enclosure type: One-piece console - console cover
- Enclosure type: One-piece console TP - Console door
- Enclosure type: EB
- Enclosure type: BG with cam
- Enclosure type: AE with cam
- Enclosure type: Based on AE with cam
- Enclosure type: Wall-mounted enclosure AE with cam
- Enclosure type: AE with 3-point lock
- Enclosure type: Based AE with 3-point lock
- Enclosure type: Wall-mounted enclosure AE with 3-point lock

Dimensions: Length: 27 mm

Installation in handle system:

- Comfort handle AX
- Mini-comfort handle AX
- Ergoform-S handle Standard
- Ergoform-S handle Standard for KS plastic enclosures
- Adjacent door latch

Lock insert: 6.5 mm triangular (CNOMO)

| | |
|--------------------------------------|---|
| Packs of: | 1 pc(s). |
| Weight/pack: | 0.02 kg |
| Copper weight (kg per piece): | 0 |
| EAN: | 4028177220331 |
| Customs tariff number: | 83024900 |
| ETIM 7.0: | EC000743 |
| ETIM 6.0: | EC000743 |
| eCl@ss 8.0/8.1: | 27409218 |
| eCl@ss 6.0/6.1: | 27409218 |
| Product description: | SZ Lock insert, version A, Die-cast zinc, 6.5 mm triangular, L: 27 mm |
| Approvals | |
| Certificates: | NA |