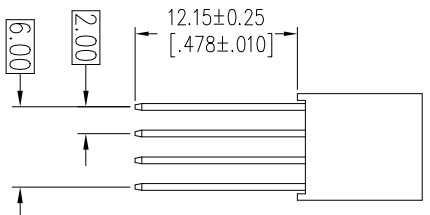
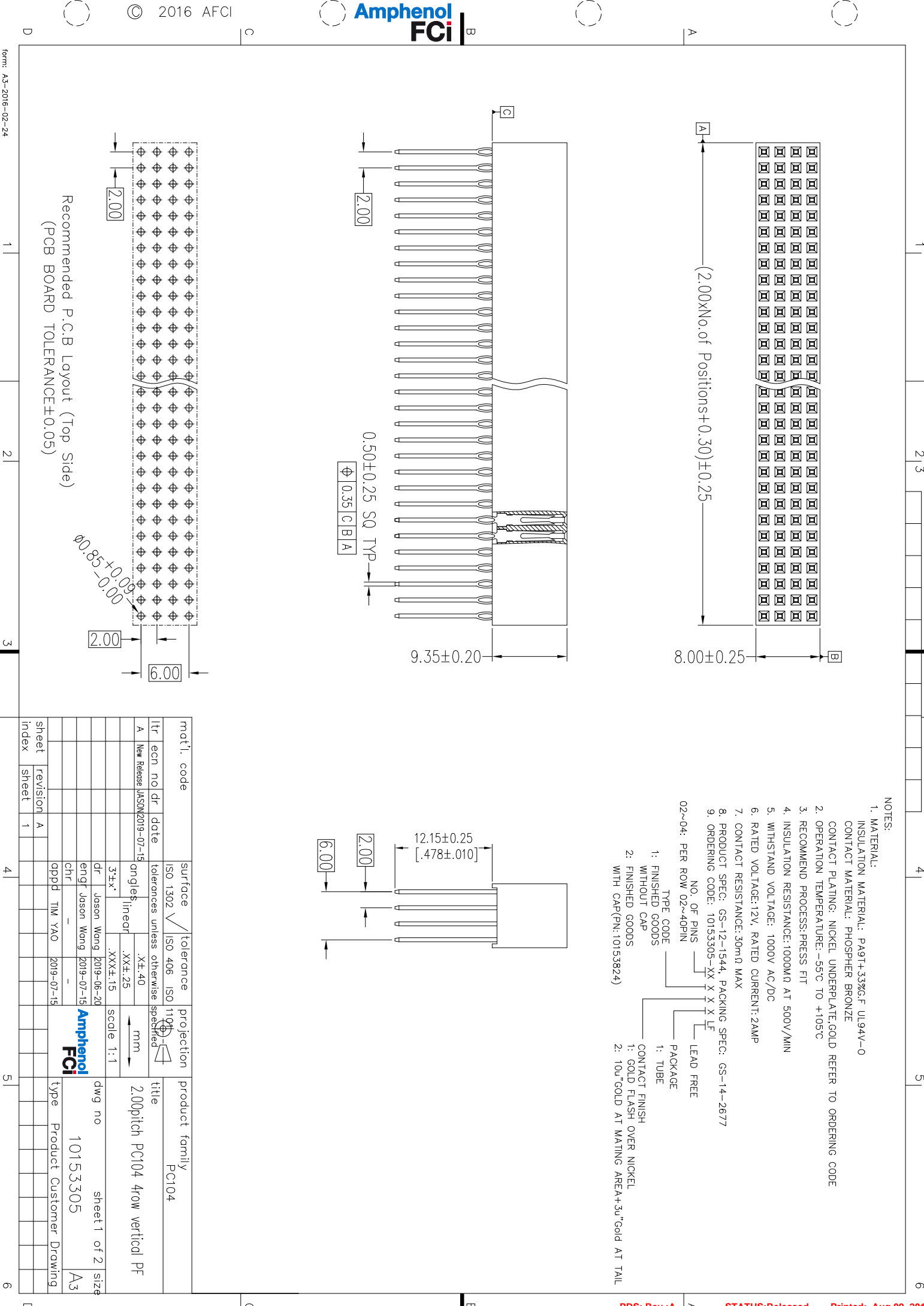


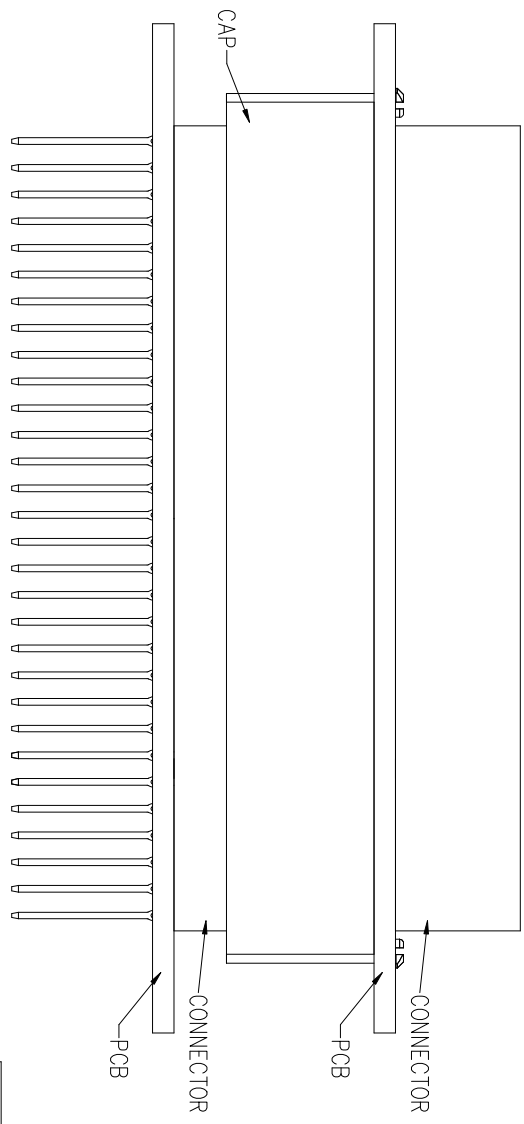
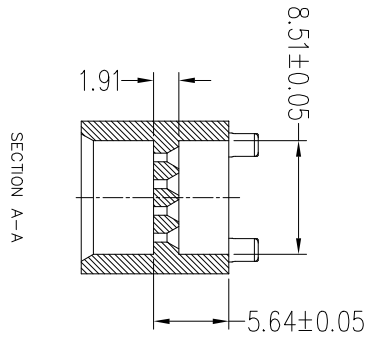
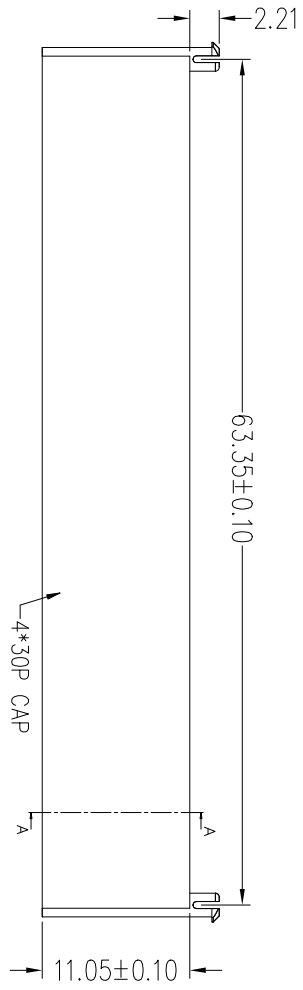
Recommended P.C.B Layout (Top Side)
(PCB BOARD TOLERANCE ± 0.05)

- NOTES:
- MATERIAL:
INSULATION MATERIAL: PA9T+33%GF UL94V-0
CONTACT MATERIAL: PHOSPHER BRONZE
CONTACT PLATING: NICKEL UNDERPLATE, GOLD REFER TO ORDERING CODE
 - OPERATION TEMPERATURE: -55°C TO +105°C
 - RECOMMEND PROCESS: PRESS FIT
 - INSULATION RESISTANCE: 1000MΩ AT 500V/MIN
 - WITHSTAND VOLTAGE: 1000V AC/DC
 - RATED VOLTAGE: 12V, RATED CURRENT: 2AMP
 - CONTACT RESISTANCE: 30mΩ MAX
 - PRODUCT SPEC: GS-12-1544, PACKING SPEC: GS-14-2677
 - ORDERING CODE: 10153305-XX X X X LF
NO. OF PINS
02~04: PER ROW 02~40PIN
- TYPE CODE
1: FINISHED GOODS WITHOUT CAP
2: FINISHED GOODS WITH CAP(PN:10153824)
- LEAD FREE
PACKAGE
1: TUBE
CONTACT FINISH
1: GOLD FLASH OVER NICKEL
2: 10u" GOLD AT MATING AREA+3u" Gold AT TAIL



mat'l. code	surface	tolerance	projection	product family
1tr ecn no dr date	ISO 1302	ISO 406 ISO	110°	PC104
A New Release JASON 2019-07-15	tolerances unless otherwise specified	.XX±.25	mm	2.00pitch PC104 4row vertical PF
angles ineqr .XXX±.15	scale 1:1			
3±x'	dr Jason Wang 2019-06-20			
	engr Jason Wang 2019-07-15			
	chr -			
	qppd TIM YAO 2019-07-15			
sheet revision A				
index sheet 1				





- 1. CAP IS OPTIONAL
- 2. MATED WITH 10153305-301XXLF
- 3. ORDERING CODE: 10153824-XX X LF
- NO. OF PINS
- 30: PER ROW 30PIN
- LEAD FREE
- PACKAGE
- 1: TUBE

MATED STATUS

mat'l. code	surface	tolerance	projection	product family
ISO 1302	ISO 406	ISO 1104	PC104	
tolerances unless otherwise specified				
angles	linear	mm	title	
3±x°	.XXX±.15	scale 1:1	2.00pitch PC104 4row vertical PF	
dr Jason Wang 2019-06-20			dwg no	
engf Jason Wang 2019-07-15			10153305	
chr -			sheet 2 of 1	
qppd TIM YAO 2019-07-15			size	
			A3	
sheet revision A			type	
index sheet 2			Product Customer Drawing	