

**MICRO SWITCH**

FREERPORT, ILLINOIS, U.S.A.  
A DIVISION OF HONEYWELL

FED. MFG. CODE 91929

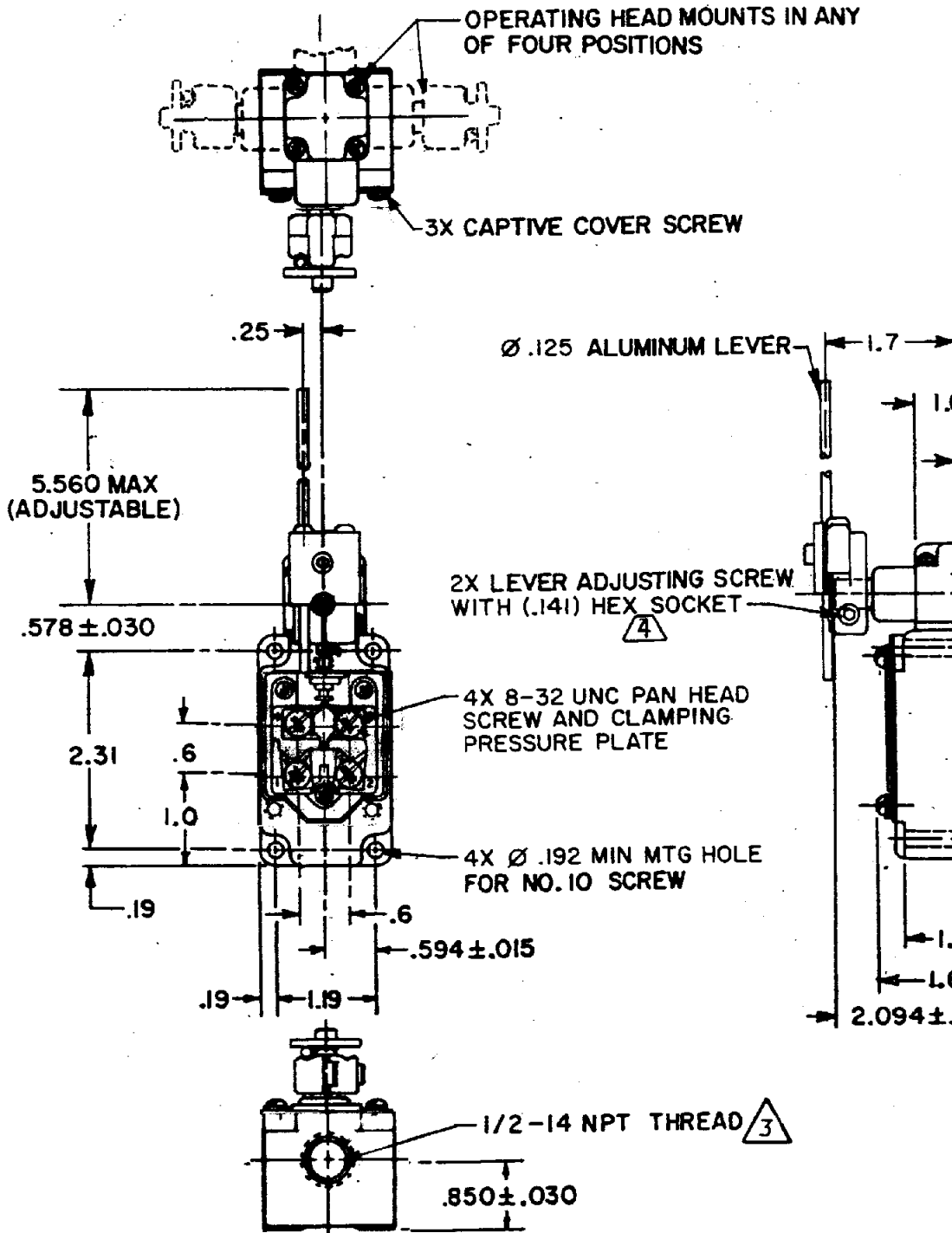
**SWITCH-ENCLOSED**

CATALOG L

ILS10

REPLACES	ILS10	
	M	DRAWING NUMBER
	13	ISSUE
CHECK	24 JAN 94	24 JAN 94
	D W	D W
CHECK	06 JAN 94	06 JAN 94
	J D B	J D B
REVISIONS	A CO-77031 J D B 22 DEC 93	
PO-92891-A	DRAWN	

RELEASE NO.



THIS DRAWING COVERS A PROPRIETARY ITEM AND IS THE PROPERTY OF MICRO SWITCH, A DIVISION OF HONEYWELL REGULATOR CO. THIS DRAWING IS NOT TO BE COPIED OR USED WITHOUT THE APPROVAL OF MICRO SWITCH.

CHARACTERISTICS	ELECTRICAL DATA	SCALE
OPERATING TORQUE-----1.7 IN-LB MAX	CONTACT ARRANGEMENT (SEE CIRCUIT DIAGRAM)	DO NOT SCALE
FULL OVERTRAVEL TORQUE --- 2.4 IN-LB MAX		18A-120, 240, OR 480 VAC; 1/3 HP - 120 VAC 3/4 HP - 240 VAC; 0.8A - 115 VDC; 0.4A - 230 VDC .1A - 550 VDC PILOT DUTY: 600 VAC MAX
RELEASE TORQUE-----0.35 IN-LB MIN		DIMENSIONS TO CENTER UNLESS OTHERWISE SPECIFIED
PRETRAVEL-----20° MAX		TOLERANCES
DIFFERENTIAL TRAVEL-----12° MAX		ONE PLACE
OVERTRAVEL-----30° MIN		TWO PLACES
RELEASE TRAVEL-----5° MIN		THREE PLACES
SWITCH-BASIC REPLACEMENT-----2 MIN		ANGLES
		WEIGHTS