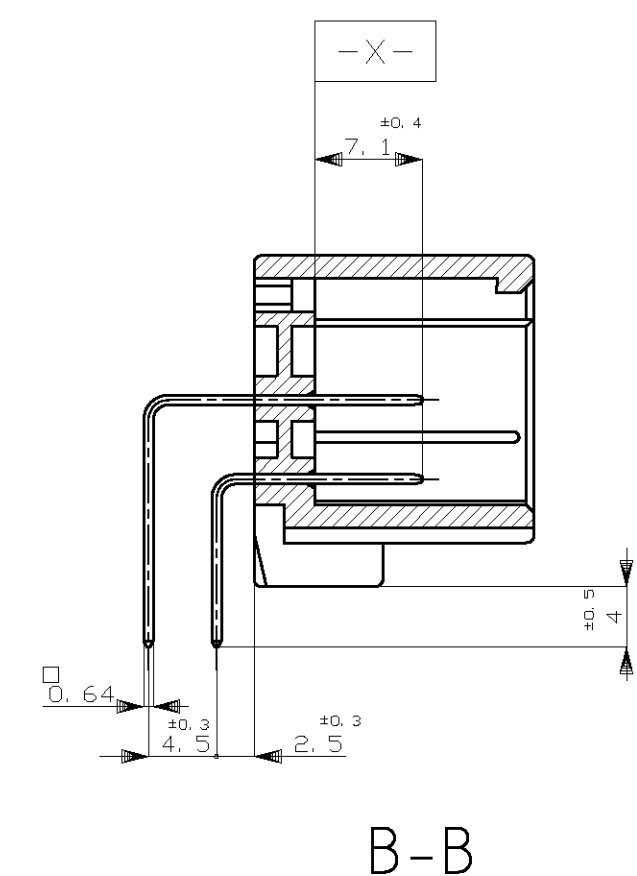
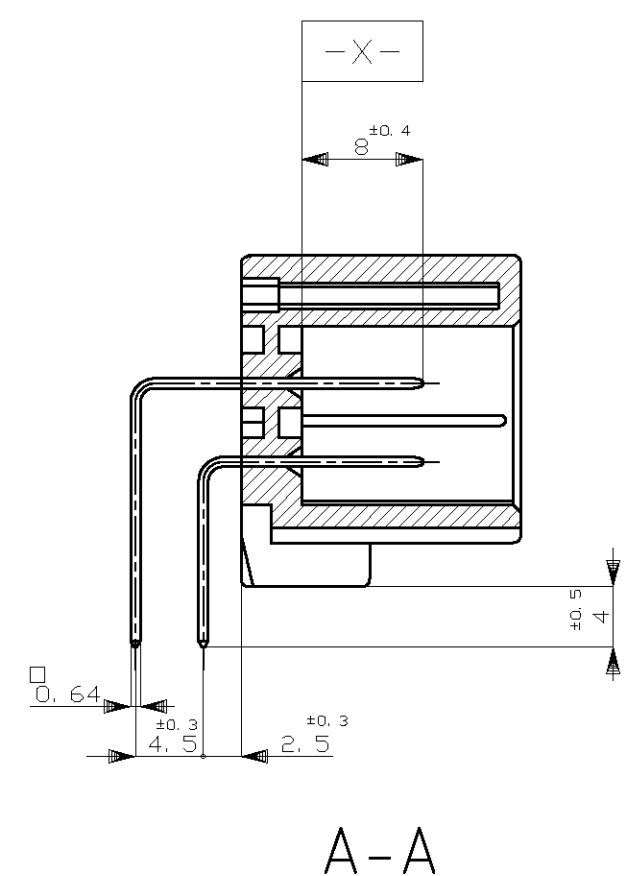
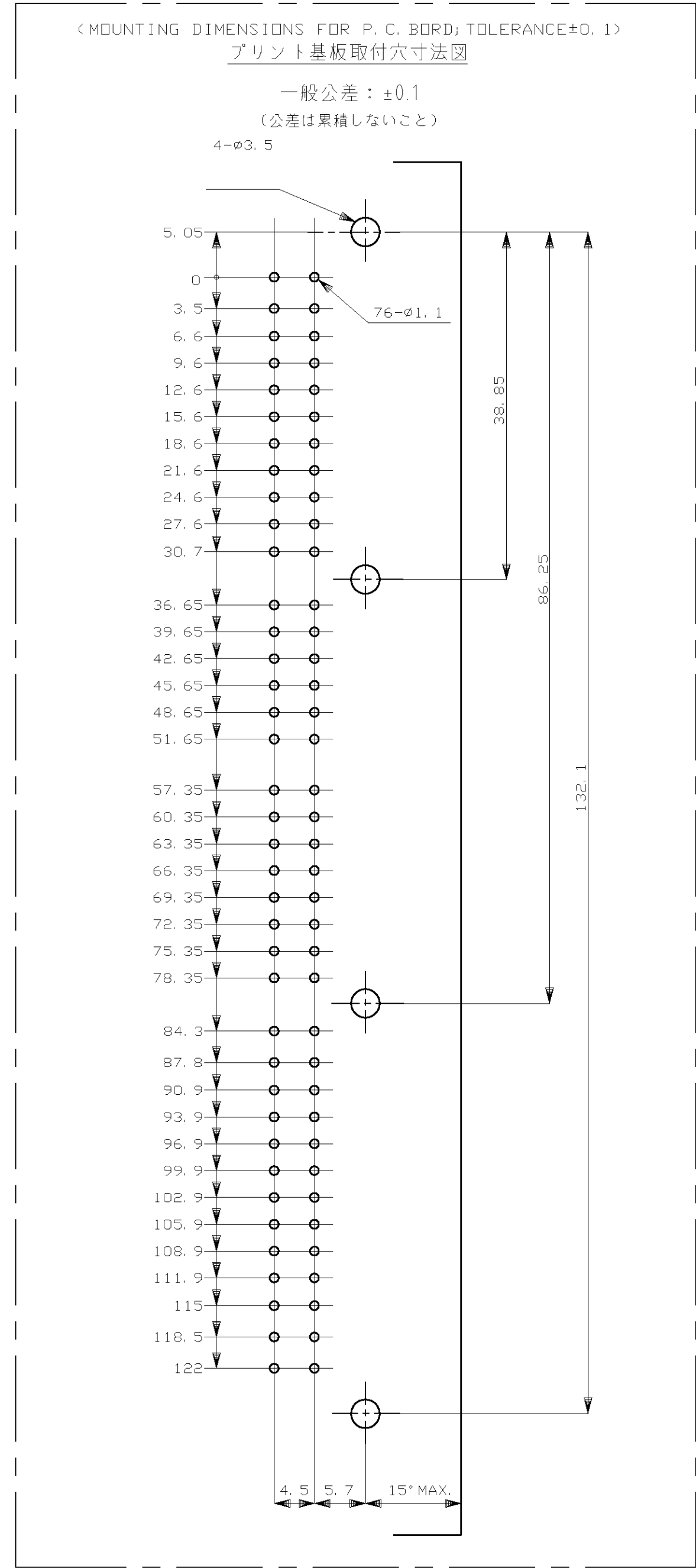
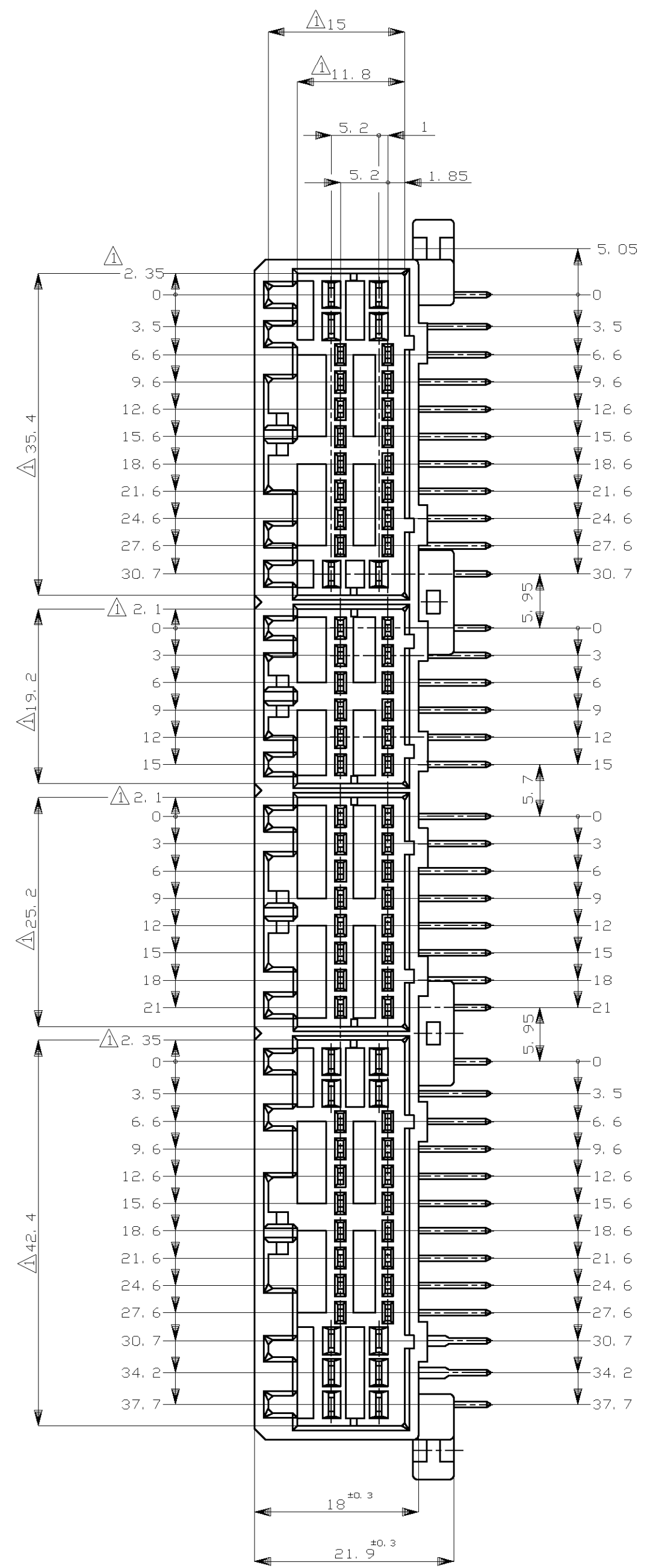
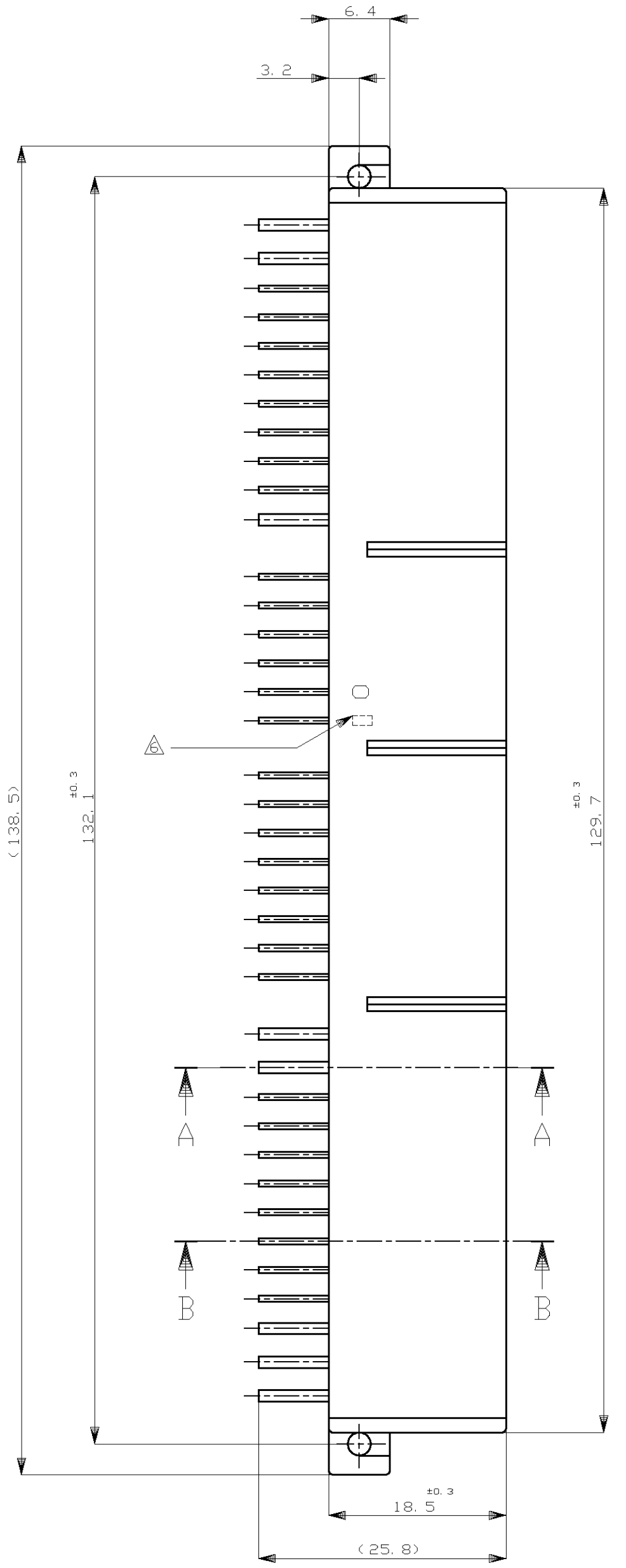
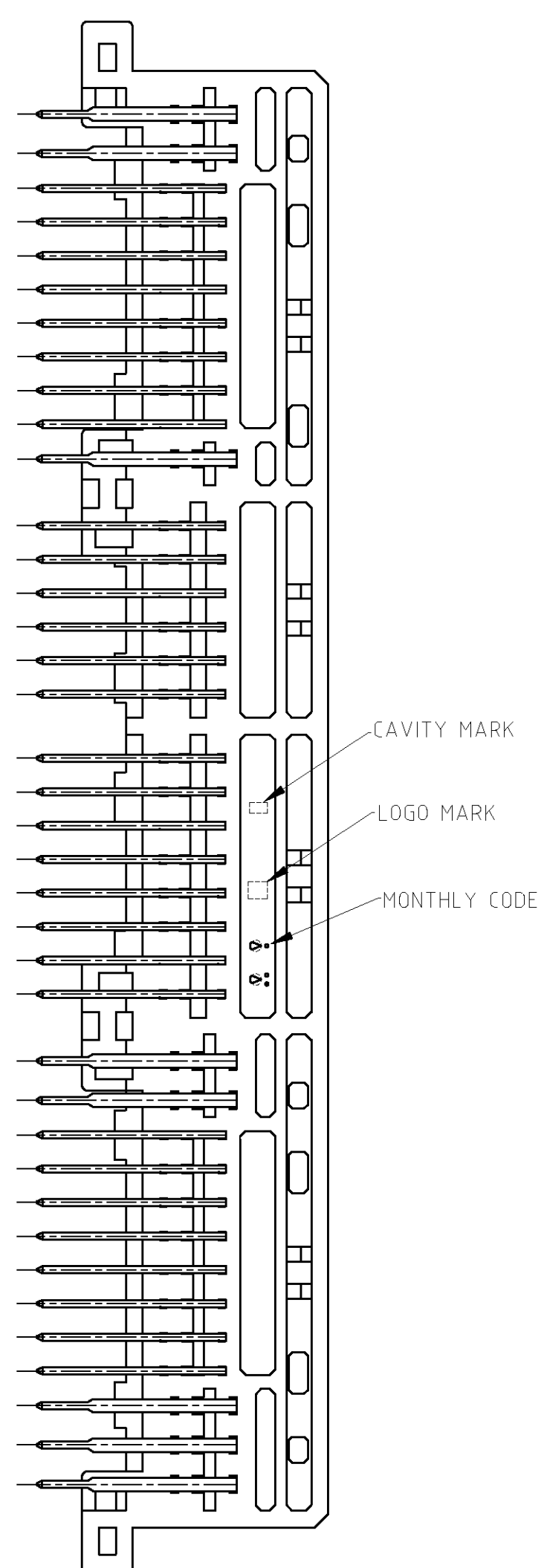
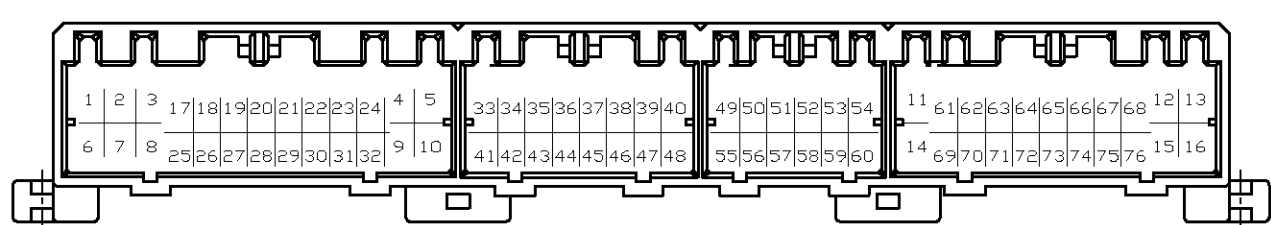


REVISED		DESCRIPTION	DATE	DN	APPD
H2	REVISED	ECR-09-006982	26MAR09	TS	KB



- △ MUST BE KEPT BETWEEN [X] AND 2
- 2. THE MATING PLUG HSG. PART NUMBER: 174516, 174515, 174514, 174913
- 3. RECOMMENDED MOUNTING SCREW: 3mm DIA, 6mm LENGTH (MAX.)  
 PAN HEAD CLASS 2 TAPPING SCREW SPECIFIED IN JIS B1115, B1122  
 (TIGHTENING TORQUE: 4kg-cm MAX.)
- 4. APPLICABLE PRODUCT SPEC NO.: 108-5280
- △ CIRCUIT NUMBER  
 POWER CIRCUIT NO. ①~⑩  
 SIGNAL CIRCUIT NO. ⑪~⑰
- △ INDICATED PREFIX AND ID MARK OF PRODUCT P/N BY COLOR HOT MARK  
 (APPLICABLE 0-174915-6 [0], 2-174915-7 [2],  
 3-174915-6 [3], 4-174915-1 [4], 5-174915-7 [7])
- △ [-X-] 面から2mmの範囲で測定
- 2. 嵌合相手ハウジング型番 174516, 174515, 174514, 174913
- 3. 推奨取付ねじ: JIS B1115, B1122 タッピングねじ, なべ2種  
 呼び径3, 長さ6mm以下 (締付けトルク: 4kg-cm 以下)
- 4. 適用製品規格番号: 108-5280
- △ 回路番号:  
 パワー回路 ①~⑩  
 シグナル回路 ⑪~⑰
- △ 適用製品型番のアプレフィックス及びIDマークを  
 カラーホットマークにて表示  
 (適用製品型番 0-174915-6 [0], 2-174915-7 [2],  
 3-174915-6 [3], 4-174915-1 [4], 5-174915-7 [7])



PLC	TIN-LEAD	SELECTIVE GOLD	PLC	HOUSING COLOR	PART NUMBER
6	TIN-LEAD PRE-TIN × 73	SELECTIVE GOLD × 3	12, 13, 14	GRAY 灰	6-174915-6
5	TIN-LEAD PRE-TIN × 16	SELECTIVE GOLD × 60	17~76	YELLOW 黄	5-174915-7
4	TIN-LEAD PRE-TIN × 67	SELECTIVE GOLD × 9	13, 16, 69~75	WHITE 白	4-174915-1
3	TIN-LEAD PRE-TIN × 62	SELECTIVE GOLD × 14	49~54, 61~68	GRAY 灰	3-174915-6
2	TIN-LEAD PRE-TIN × 54	SELECTIVE GOLD × 22	33~40, 49~54, 61~68	YELLOW 黄	2-174915-7
0	PRE-TINNED × 76			GRAY 灰	174915-6

THIS DRAWING IS A CONTROLLED DOCUMENT.

DN: S. FUJITA 17NOV08  
 CIR: K. BETSUJI 17NOV08  
 APD: K. BETSUJI 17NOV08

Tyco Electronics Corporation  
 Kawasaki, Japan

76POSITION CAP HOUSING ASSY  
 040/070 SERIES HYBRID I/O CONNECTOR

SIZE: A1  
 CODE: 00779  
 DRAWING NO: 174915

SCALE: 2:1 SHEET 1 OF 1 REV. H2