

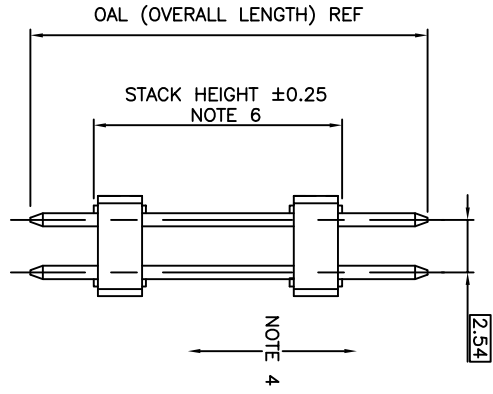
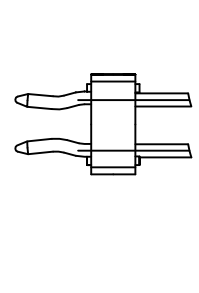
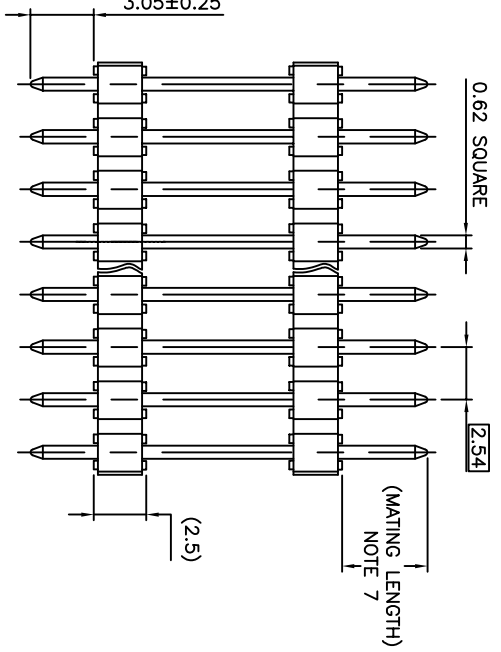
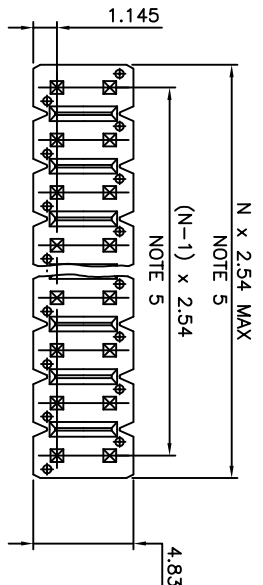
RoHS COMPATIBLE PRODUCT NUMBER
54122-XXXXXXXXXXLF

LEADED PRODUCT NUMBER
54122-XXX-XX-XXXX

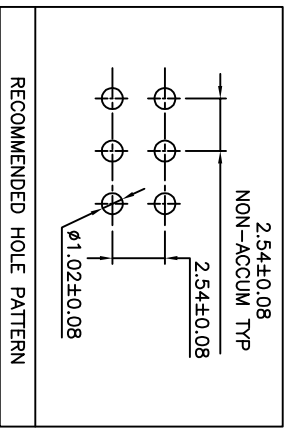
AS AVAILABLE

- PLATING
- 0.76µm GOLD/GXT ON CONTACT AREA
2µm MIN MATTE TIN ON TAIL
OVER 1.27µm Ni MIN
 - 2µm MIN MATTE TIN
OVER 1.27µm Ni MIN
 - 0.25µm GOLD/GXT ON CONTACT AREA
2µm MIN MATTE TIN ON TAIL
OVER 1.27µm Ni MIN
 - 0.38µm GOLD/GXT ON CONTACT AREA
2µm MIN MATTE TIN ON TAIL
OVER 1.27µm Ni MIN
- NOTES:
- HOUSING MAT'L : HIGH TEMPERATURE THERMOPLASTIC. UL94V-0 COLOR: BLACK
 - PIN MATERIAL : PHOSPHOR BRONZE
 - STANDARD PACKAGING IN POLYBAG
 - 9N MIN RETENTION IN EITHER DIRECTION
 - TO DETERMINE DIMENSIONS :
N = NUMBER OF POSITIONS PER ROW
EXAMPLE : 8 POS PER ROW, N x 2.54 = 20.32mm
 - XXXX = MILLIMETERS
SPECIFY MILLIMETERS
5.0mm MIN TO 60.00mm MAX AVAILABLE
OAL 65.0MM MAX AVAILABLE.
EXAMPLE FOR STACK HEIGHT: 1 2 5 0 = 12.5mm
 - MATING LENGTH = (OAL)-(3.05)-(STACK HEIGHT)
 - RETENTION IS APPLIED TO TWO ADJACENT PINS AT EACH END OF THE PRODUCT SEE SCHEMA 1 OMIT FROM PRODUCT NUMBER IF THIS FEATURE IS NOT APPLICABLE
 - RoHS COMPATIBLE PRODUCT SPECIFICATIONS

OAL	PIN STYLE
11.17	29
12.2	01
13.5	02
15.9	03
16.56	15
16.76	04
17.65	05
18.91	06
20.50	28
20.96	07
22.40	19
23.5	08
26.04	09
26.42	14
28.00	18
28.58	10
29.70	31
30.48	20
31.12	11
32.15	21
33.66	12
34.00	13
36.20	16
37.30	22
38.40	23
40.00	30
42.30	24
43.00	25
47.00	26
52.00	27



- PLATING:
 - "LF" MEANS THE PRODUCT IS LEAD-FREE, 2µm MINIMUM MATTE TIN OVER 1.27µm MINIMUM NICKEL UNDERPLATE.
- MANUFACTURING PROCESS COMPATIBILITY
 - THE HOUSING WILL WITHSTAND EXPOSURE TO 260°C ±5°C SOLDER BATH TEMPERATURE FOR 5 SECONDS IN A WAVE SOLDER APPLICATION WITH A 1.6mm MIN THICK CIRCUIT BOARD.
- LABELLING:
 - MEETS PACKAGING SPECS AS PER GS-14-920
 - THIS PRODUCT MEETS EUROPEAN UNION DIRECTIVES AND OTHER COUNTRY REGULATIONS AS DESCRIBED IN GS-47-0004.



mat'l. code	surface	tolerance	projection	product family
SEE NOTES	ISO 1302	ISO 406 ISO 1001	mm	BERGSTIK
tr ecn no dr date	tolerances unless otherwise specified	xxx ±0.3	mm	title
R F-222281 AMA 15.10.20	angles	linear xxx ±0.13	scale 4:1	UNSHR.HEADER
S F-26104 LMU 17.02.16	linear xxx ±0.05			STR DR TMT
L B-15673 LMU 13.02.14 dr	DLE	01.01.24		dwg no
M B-18962 LMU 14.09.29 engf	JM.C	01.01.24		54122
N B-19782 AMA 14.12.16 chr	JM.C	01.01.24		sheet 1 of 1
P B-205981 AMA 15.03.30 dppd	JF.N	01.01.24		A3
sheet revision				size
index sheet				type
				CUSTOMER
				Drawing