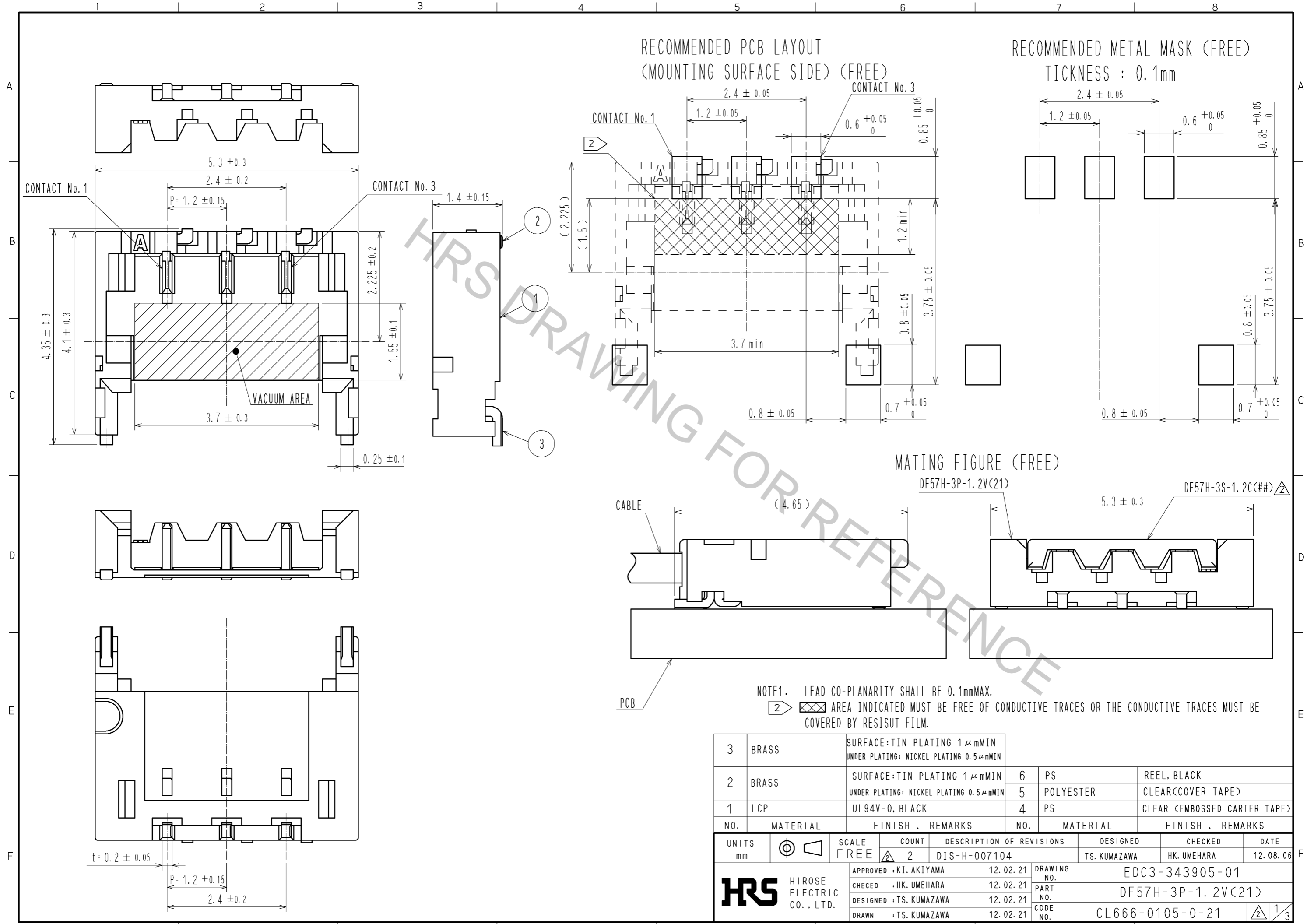


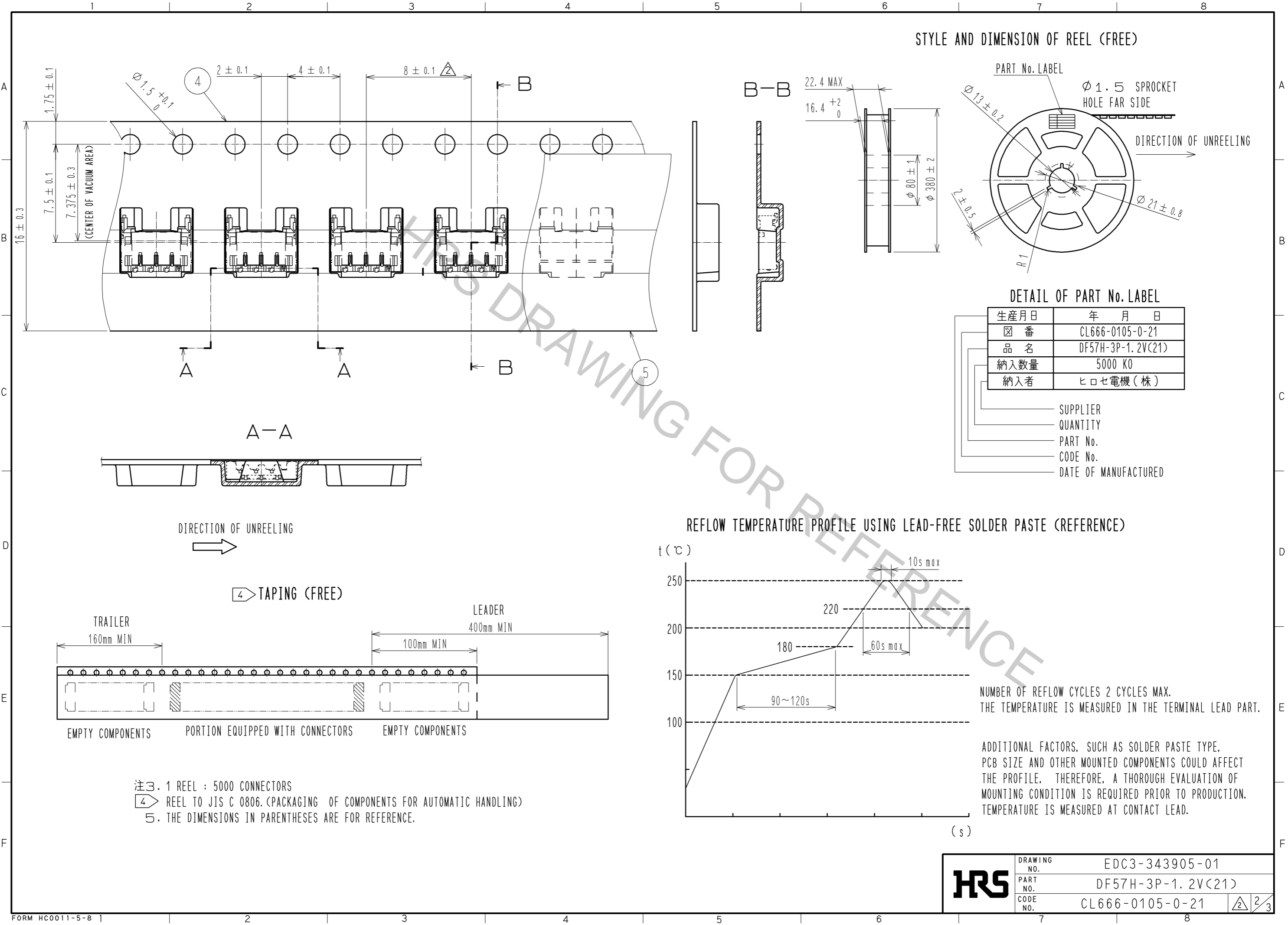
May.1.2017 Copyright 2017 HIROSE ELECTRIC CO., LTD. All Rights Reserved.



NOTE1. LEAD CO-PLANARITY SHALL BE 0.1mmMAX.
 ② AREA INDICATED MUST BE FREE OF CONDUCTIVE TRACES OR THE CONDUCTIVE TRACES MUST BE COVERED BY RESIST FILM.

3	BRASS	SURFACE: TIN PLATING 1 μmMIN UNDER PLATING: NICKEL PLATING 0.5 μmMIN	6	PS	REEL, BLACK
2	BRASS	SURFACE: TIN PLATING 1 μmMIN UNDER PLATING: NICKEL PLATING 0.5 μmMIN	5	POLYESTER	CLEAR(COVER TAPE)
1	LCP	UL94V-0, BLACK	4	PS	CLEAR (EMBOSSED CARRIER TAPE)
NO.	MATERIAL	FINISH, REMARKS	NO.	MATERIAL	FINISH, REMARKS
UNITS: mm		SCALE: FREE	COUNT: 2	DESCRIPTION OF REVISIONS: DIS-H-007104	
DESIGNED: TS. KUMAZAWA		DESIGNED: TS. KUMAZAWA	DESIGNED: TS. KUMAZAWA	DESIGNED: TS. KUMAZAWA	DESIGNED: TS. KUMAZAWA
CHECKED: HK. UMEHARA		CHECKED: HK. UMEHARA	CHECKED: HK. UMEHARA	CHECKED: HK. UMEHARA	CHECKED: HK. UMEHARA
APPROVED: KI. AKIYAMA		APPROVED: KI. AKIYAMA	APPROVED: KI. AKIYAMA	APPROVED: KI. AKIYAMA	APPROVED: KI. AKIYAMA
DRAWING NO. EDC3-343905-01			PART NO. DF57H-3P-1.2V(21)		
CODE NO. CL666-0105-0-21			DATE: 12.08.06		

May.1.2017 Copyright 2017 HIROSE ELECTRIC CO., LTD. All Rights Reserved.

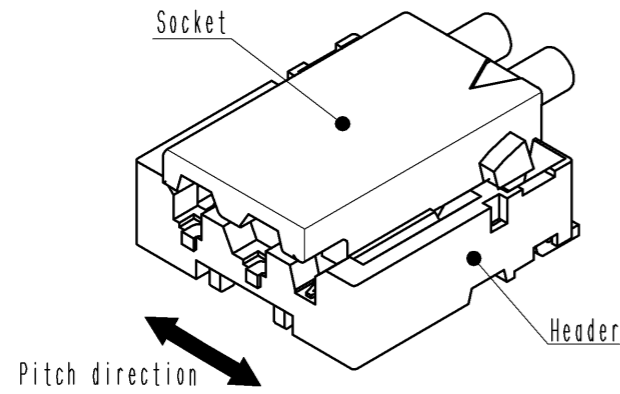


HRS	DRAWING NO.	EDC3-343905-01
	PART NO.	DF57H-3P-1.2V(21)
	CODE NO.	CL666-0105-0-21
		\triangle 2/3

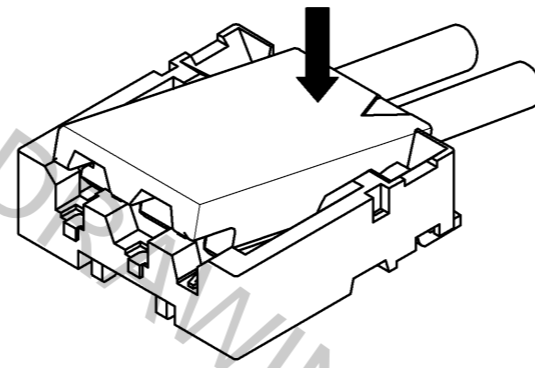
DF57 Series Mating / Unmating Operation Instruction (For DF57 series)

Mating

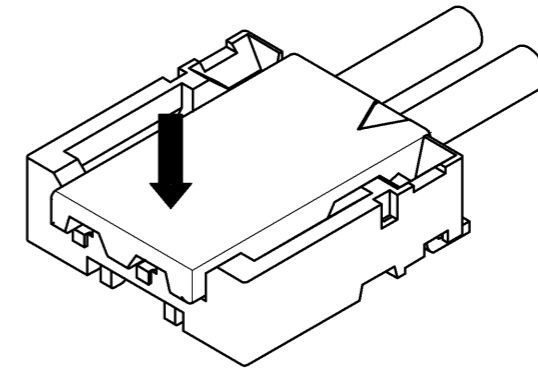
① By positioning the convexity of the socket sides to the header concavity, align the centers of the socket and the header in pitch direction.



② Slightly press the socket down at cable side to tilted angle.

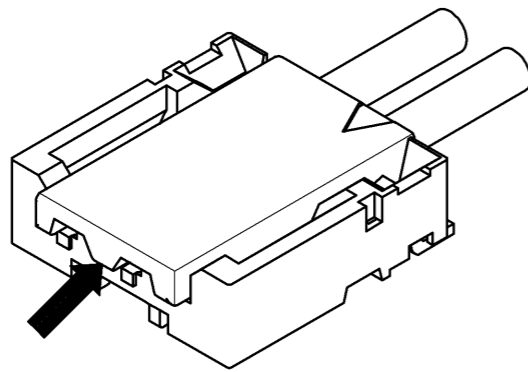


③ Press down at the lever side with stabilizing the cable side to insert. Mating completes.

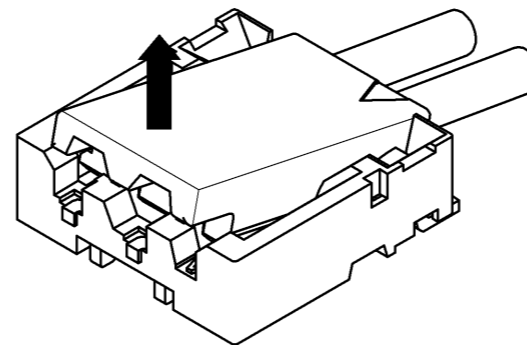


Unmating

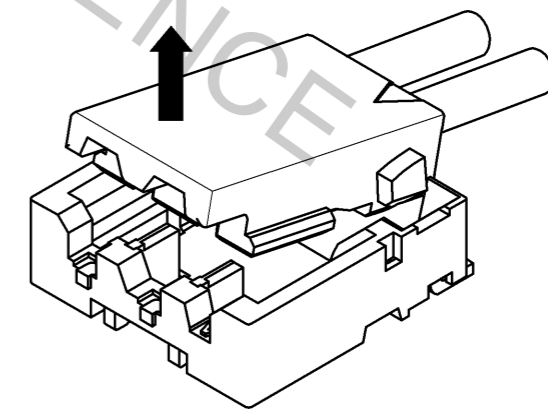
① Hook the lever with finger nail.



② Lift up to the upper direction and friction lock is released.



③ Lift up to the upper direction and positive lock is released. Removal completes.



HRS

DRAWING NO.	EDC3-343905-01
PART NO.	DF57H-3P-1.2V(21)
CODE NO.	CL666-0105-0-21

3/3