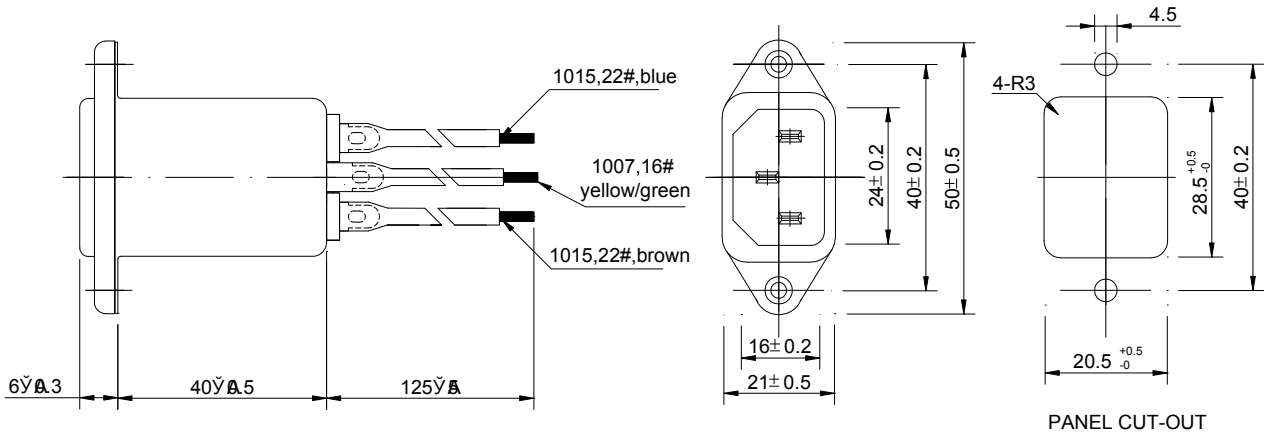


DL-1DZX2 Specification

1. Outline Drawing and Dimensions: (mm)



2. Specification:

Rated Voltage : 125/250VAC

Rated Current : 1A

Leakage current(250V/50Hz) ≤ 0.3mA

Climatic Category : HPF(25/085/21)

Test Voltage : (1min)

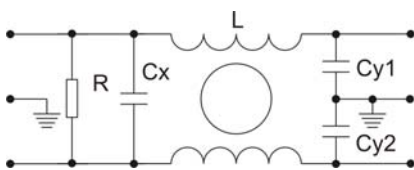
line to ground : 1500VAC

line to line : 1500VDC

Insulation Resistance :

line to ground : ≥ 3000MΩ

3. Circuit Diagram :



L	Cx	Cy1,Cy2	R
2×5mH	0.1uF	2200pF	1MΩ

4. Insertion Loss in dB: (Measured in 50Ω system , as IEC/CISPR NO.17)

