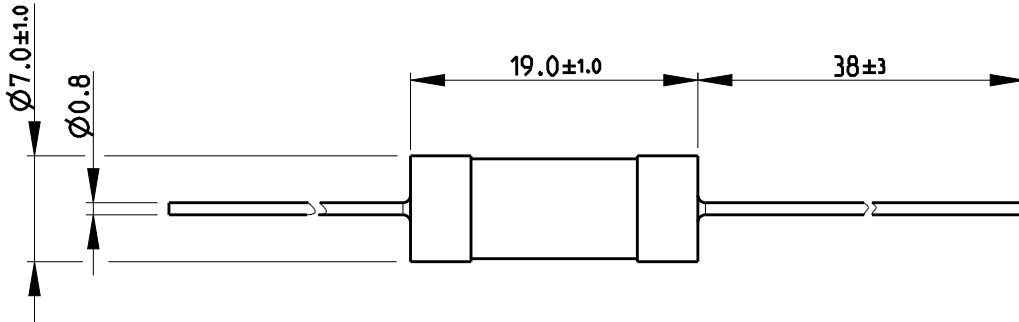


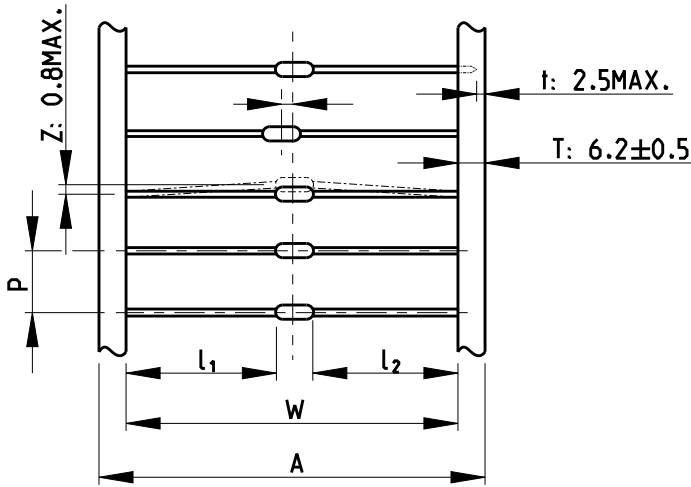
LOC	DIST	REVISIONS					
E	B	P	LTR	DESCRIPTION	DATE	DWN	APVD
			BA1	REVISED PER ECO-11-005150	29MAR2011	RK	HMR
			BA2	REVISED PER ECR-18-014264	07SEP2018	SR	CB

FOR FURTHER INFORMATION SEE DATA SHEET FOR CCR SERIES-CERAMIC COMPOSITION RESISTORS

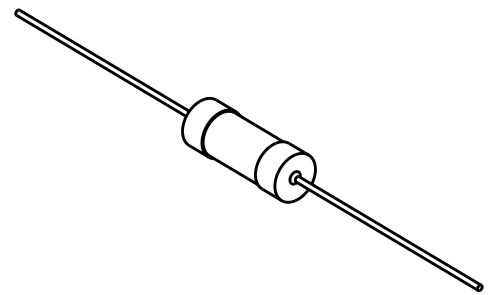


NOTE:  
DIMENSIONS SHOWN ABOVE ONLY REFER TO PRODUCT SUPPLIED AS BULK.  
FOR TAPED OPTION REFER TO TABLE AND DIAGRAM BELOW.

TAPE PACKAGING GRAPHIC



RoHS Compliant



SCALE 1:1

PACKAGING STYLE	DIMENSIONS(mm)				
	W	P	A	l <sub>1</sub> -l <sub>2</sub>	ACCUMULATED TOLERANCE
CCR1/2	52±1	5.08±0.38	65±1.0	1.0Max.	101.6±2mm/Px20
CCR1/CCR2	63±1	10.16±0.80	-	1.0Max.	203.2±3mm/Px20

2008

RELEASED FOR PUBLICATION

ALL RIGHTS RESERVED.

THIS DRAWING IS UNPUBLISHED.

© COPYRIGHT 2008

DIMENSIONS: mm		DWN SUBHASH.M 19-Sep-08	MATERIAL	FINISH
TOLERANCES UNLESS OTHERWISE SPECIFIED:		CHK PRAKASH.S 19-Sep-08	TE Connectivity	
0 PLC	±0.2	APVD STEPHEN.P 19-Sep-08		
1 PLC	±0.1	PRODUCT SPEC	NAME CERAMIC COMPOSITION RESISTORS SERIES CCR2	
2 PLC	±	APPLICATION SPEC	SIZE	CAGE CODE
3 PLC	±		A 4	00779
4 PLC	±		DRAWING NO	RESTRICTED TO
ANGLES	±5°	WEIGHT	C-1623720	
CUSTOMER DRAWING			SCALE	SHEET
			2:1	1 OF 1
			REV	BA2

# Mouser Electronics

Authorized Distributor

Click to View Pricing, Inventory, Delivery & Lifecycle Information:

[TE Connectivity:](#)

[CCR2220RKB](#)