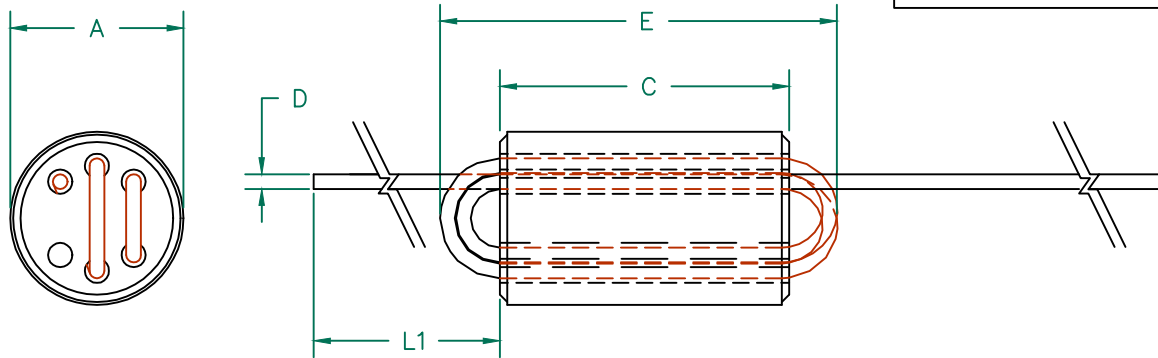
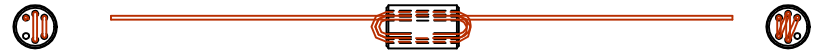


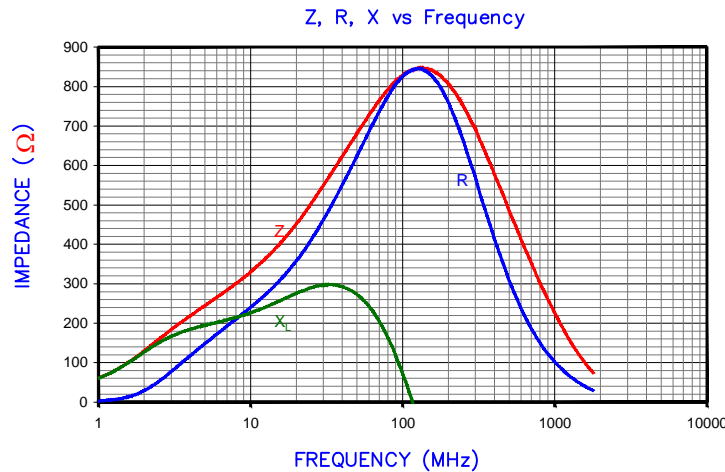
SCALE DRAWING: 1:1



ELECTRICAL TESTING

TEST:	Z	Z
FREQUENCY	25 MHz	100 MHz
NOMINAL	538 Ω	835 Ω
MINIMUM	- Ω	626 Ω

RoHS



AGILENT E4991A RF Impedance/Material Analyzer
HP 16194A Test Fixture

DIMENSIONS:

A	<u>6.00</u> [.236]	±	<u>0.20</u> [.008]
B	<u>86.46</u> [3.404]	±	<u>6.35</u> [.250]
C	<u>10.00</u> [.394]	±	<u>0.25</u> [.010]
D	<u>0.51</u> [.020]	±	TYP.
E	<u>14.61</u> [.575]	±	MAX.
L1	<u>38.10</u> [1.50]	±	<u>3.18</u> [.125]

NOTES: UNLESS OTHERWISE SPECIFIED

1. WIRE: 2-1/2 TURNS, 24 AWG 0.51 [.020] DIA,
2. PLATING: 100% TIN 5μ ± 2μ [200 μin ± 80μin]
3. REF. STEWARD CORE P/N 28C0236-000.
4. SOLDERABILITY:
 - A. LEADS SOLDERABILITY CONFORMS TO MIL-STD-202F, METHOD 208F.
5. WEIGHT/1000 1.22 kgs. 2.7 lbs.

DIMENSIONS ARE IN mm [INCHES]				This print is the property of Laird Tech. and is loaned in confidence subject to return upon request and with the understanding that no copies shall be made without the written consent of Laird Tech. All rights to design or invention are reserved.			
P	N	M	L				
P	UPDATE COMPANY LOGO	04/27/15	QIU	PROJECT/PART NUMBER:		REV	DRAWN BY:
N	UPDATE COMPANY LOGO	12/16/08	JRK	28C0236-0BW-10		P	DJB
M	UPDATE COMPANY LOGO	04/16/07	JRK	DATE:	08/06/90	SCALE:	4:1
L	REV A DIM & TOLS ADD ROHS SYMBOL	03/08/07	JRK	CAD #	28C0236-0BW-10-P	TOOL #	C0236
K	CORRECT REV BLOCK mm [INCHES]	10/20/06	JRK	MATERIAL:		NiZn Ferrite	
J	CORRECT NOTE 5	07/07/05	JRK				
REV	DESCRIPTION	DATE	INT				