



# xPico® 270

802.11ac Wi-Fi® + Bluetooth®  
Embedded IoT Gateway



## THE APEX OF INDUSTRIAL WI-FI

### High-performance Wi-Fi, Ethernet and Bluetooth Connectivity

The xPico® 270 gateway delivers dual-band 802.11ac Wi-Fi connectivity management and enterprise security for optimal device performance and communication within noisy industrial settings. In addition to high-performance Wi-Fi, the compact xPico 270 embedded gateway simplifies the deployment of robust Ethernet, Bluetooth and Bluetooth Low Energy (BLE) connectivity without writing complex drivers. Its industry-leading compact SMT footprint fits it into any design and can operate in extreme environments.

### Intelligent Networking and Advanced IoT Communication Engine

Simplify embedded application development and accelerate time to market with the xPico 270 gateway's built-in network communications engine and flexible system integration modes. Completely offload IoT communications from your embedded microcontroller when operating as a network co-processor or use it as a wireless microcontroller with the provided SDK.

Field-tested *TruPort*® Serial technology supports transparent pass-through of hundreds of proprietary serial and standard Fieldbus protocols and *TruPort*® Socket technology enables complete control over multiple connections via TCP, UDP or TLS. Configure and control the gateway operation from the host microcontroller side using command mode or the network side with Web Service APIs and XML configuration data.





### Lantronix InfiniShield™ Security - Comprehensive Device Security Framework

The xPico 270 embedded IoT gateway includes a comprehensive suite of built-in device security applications that offer robust and secure connections, data-at-rest protection for keys, configuration, secure boot and secure firmware-over-the-air (FOTA) updates, user role-based access control and fine-grained policy-based network service control.

### Remotely Manage Your Connected Machines with the MACH10® IoT Platform

Add scalable remote device management and data access from your machines via pre-integrated MACH10® IoT software components. Provision xPico 270 gateways and connected machines with mobile apps for iOS and Android.

### xPico® 270 Key Benefits

-  Faster Time to Market
-  Industrial-grade Security
-  Robust Data Handling
-  Highest Integration

### xPico® 270 Highlights

- Dual-band Wi-Fi (802.11 a/b/g/n/ac) and Ethernet
- Enterprise Wi-Fi Security (EAP/802.1X)
- Dual-mode Bluetooth Classic and Bluetooth Low Energy (BLE) 4.2
- Automatic network connection management
- Concurrent Soft AP + client mode for direct wireless service access without disrupting machine field operations
- Enables operation as network co-processor or wireless MCU
- Pre-integration with MACH10® IoT platform
- Global Certification (FCC, RED, IC, ETSI, Japan, AU/NZS, China, Taiwan, India, Mexico)
- Industrial-grade design for operation in extreme environments (-40 C to +85 C)

## Features and Specifications

### Network

#### Wireless LAN Specifications

- IEEE 802.11 a/b/g up to 54 Mbps; 802.11 n (1x1) up to 150 Mbps; 802.11ac up to 433 Mbps
- 20, 40 and 80 MHz channel width with optional SGI
- Dual Band 2.4 GHz and 5 GHz
- Supports IEEE 802.11 d/h/i
- Bluetooth/WLAN Coexistence

#### Ethernet Specifications

- IEEE 802.3 MAC, 10BaseT and 100BaseT (RMII)

#### Bluetooth Specifications

- Compliant to Bluetooth Core Specification version 4.2 (BR/EDR/BLE)
- BLE Central and Peripheral Roles
- Support for Generic Access Profile (GAP), Generic Attribute Profile (GATT), Device ID Profile, Serial Port Profile (SPP)

#### Data Communication

- TruPort<sup>®</sup> Serial Technology— TCP and UDP Server Mode, TCP and UDP Client Mode, Multi-host Connect; TLS Client and Server
- TruPort<sup>®</sup> Socket— Multi-host Client and Server Modes, HTTP(S), Sockets, TLS
- Authenticated SMTP Support— Send email directly from device
- Modbus TCP to Modbus RTU/ASCII gateway

#### Security and Authentication

- InfiniShield™ Security Software
  - Secure Boot, Secure Firmware-Over-the-Air (FOTA) Updates
  - Secure Key Storage, Encrypted Configuration
  - Secure Connections with SSL/TLS, HTTPS
  - Software Controlled Network Service Ports Enable/Disable
  - Role Based Access Control
- AES/CCMP and TKIP encryption, WPA/WPA2 Personal
- WPA2 Enterprise (EAP-TLS, EAP-TTLS, EAP-PEAP, EAP-FAST)
- SSLv3/TLS 1.2 with PKI and X.509 Certificates (up to 4096-bit Keys)
- AES Algorithm, 256-bit, 192-bit, 128-bit

#### Management Interfaces

- Lantronix MACH10™ IoT Software Platform, REST, MQTT
- Lantronix Discovery Protocol (77FE)
- Serial Port, Internal Web Server (HTTP/HTTPS)
- XML Configuration and XML Status (CLI, API)
- Secure Firmware Upgrade via HTTP, MACH10 Gateway Manager
- Remote management with Lantronix Gateway Central™

#### Protocol Support

- DHCP Client, Server (Soft AP), HTTP Server/Client
- IPv4, TCP/IP, UDP/IP, ARP, ICMP, Auto-IP, DNS

#### Wireless Features

- Concurrent Soft AP + STA (Client), Client, Soft AP
- Up to 5 simultaneous client connections to Soft AP interface
  - Up to 4 in Concurrent Mode
- Connect to multiple WLAN networks, WLAN QuickConnect
- Ethernet to Wi-Fi Client Bridge (Single Host Mode), Auto-MAC ID

#### Operating Conditions

- Operating Temp: -40°C to +85°C; Storage Temp: -40°C to + 85°C
- Vibration (Operational): 40G; Non-operational Shock: 65G
- Storage Humidity: 10% to 85% relative humidity, non-condensing
- 12 Programmable I/O Pins
- System Pins: RESET, DEFAULT, WAKE

#### Host Interfaces

- Serial: UART Port TTL
  - Data Rates: 9600 bps to 4 Mbps (software selectable)
  - Control signals: DTR/DCD; Flow Control: RTS/CTS; XON/XOFF
- USB (Host)
- 12 Programmable I/O Pins
- System Pins: RESET, DEFAULT, WAKE

#### Power

- Input Voltage: 3.3VDC
- Max Current Consumption (Boot Peak): 600 mA (Preliminary)

#### Dimensions & Packaging

- Dimensions: 17mm x 25mm x 2mm (LGA); 22mm x 35.5mm x 2.73 mm (Edge Card)
- For LGA: Tape and Reel MSL3
- For Edge Connector: Tray

#### Certifications & Compliance (Planned for Product Release)

- Type Approvals: USA (FCC Part 15), Canada (IC RSS), EU (RED), Japan (MIC), China (SRRC), AU/NZS, India, Taiwan, Mexico
- Safety: IEC 62368, EN 62368, EN 62311, UL 60950
- RoHS, REACH

#### Warranty

- 5-Year Limited

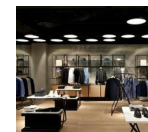
#### xPico 270 is Ideal for :



Industrial Automation



Medical Devices



Responsive Retail



Resource Management

#### Product Variants

Part Number	Description
XPC270100B	xPico 270 Embedded IoT Gateway, 802.11 a/b/g/n/ac Wi-Fi, Ethernet, Bluetooth, Dual u.fl Antenna, Ind. Temp, LGA, T&R 250
XPC270300B	xPico 270 Embedded IoT Gateway, 802.11 a/b/g/n/ac Wi-Fi, Ethernet, Bluetooth, Dual u.fl Antenna, Ind. Temp, Edge Connector, Tray
XPC270100S	xPico 270 Embedded IoT Gateway, 802.11 a/b/g/n/ac Wi-Fi, Ethernet, Bluetooth, Dual u.fl Antenna, Ind. Temp, LGA, T&R 25-pack
XPC270300S	xPico 270 Embedded IoT Gateway, 802.11 a/b/g/n/ac Wi-Fi, Ethernet, Bluetooth, Dual u.fl Antenna, Ind. Temp, Edge Connector, Single
XPC270300EK	xPico 270 Embedded IoT Gateway, Evaluation Kit, Wi-Fi, Bluetooth 4.2 + Ethernet

#### Ordering Information

##### United States

Call: 1.800.422.7055  
 sales@lantronix.com

##### Asia/Pacific

Call: +852 3428.23.38  
 asiapacific\_sales@lantronix.com

##### Europe

Call: +31 (0) 76.52.3.6.74.4  
 emea@lantronix.com

##### Japan

Call: +81.3.6277.8802  
 japan\_sales@lantronix.com



#### Learn More About xPico 270

For contact information, go to [www.lantronix.com](http://www.lantronix.com)

# Mouser Electronics

Authorized Distributor

Click to View Pricing, Inventory, Delivery & Lifecycle Information:

[Lantronix:](#)

[XPC270300EK](#)