

Xiamen Lineyi Electronics

P/N: SMA-KE-G , (SMA straight, PCB socket, gold plating)

Features:

Working temperature: -61~ 165 degree centigrade

Vibration: MIL-STD-202, method 213

Impedance: 50 ohms

Frequency: DC-12.4GHz

Current: 335V Max

Withstand current: 1000V rms

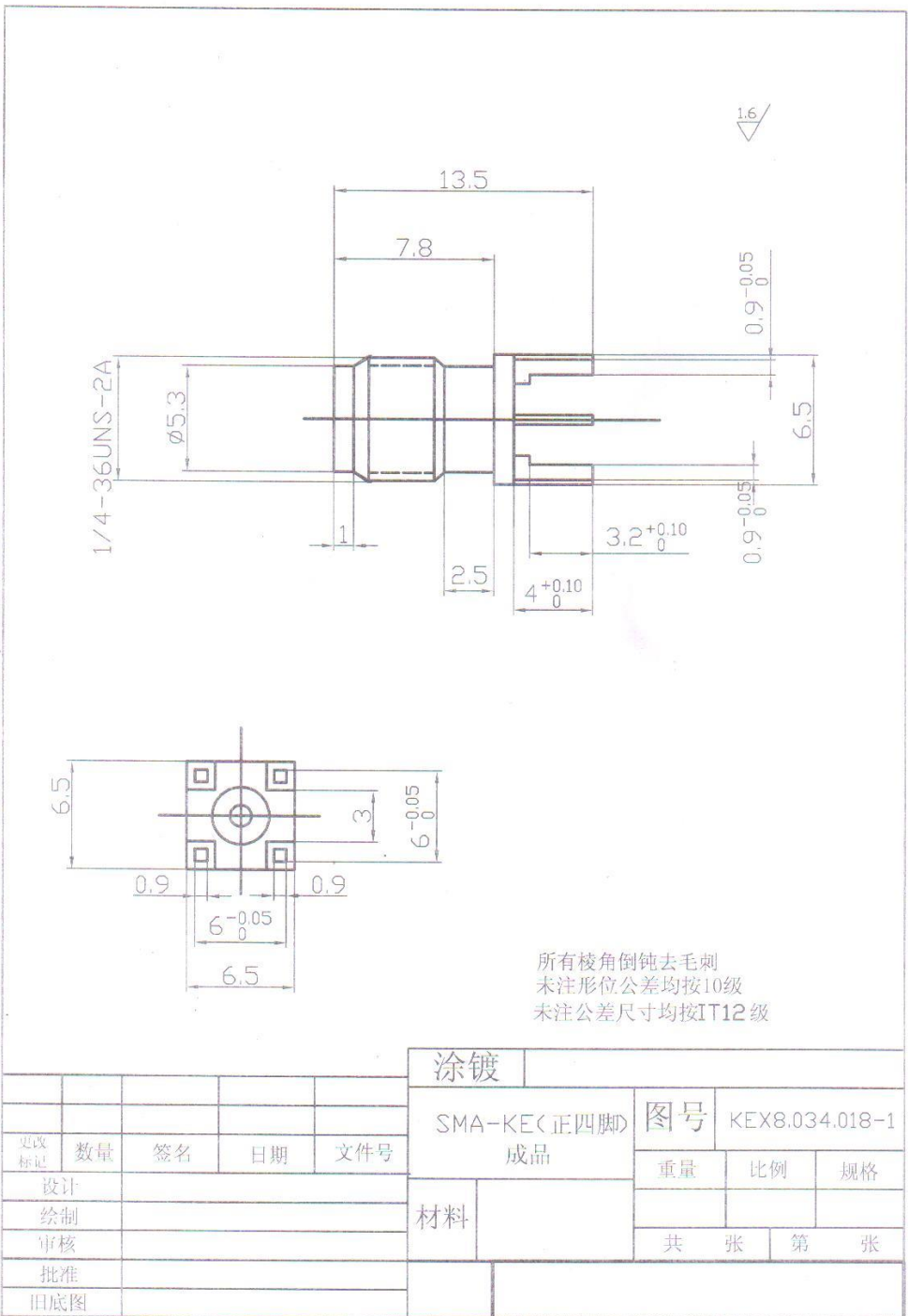
Contact resistance: inner conductor ≤ 3 mohms

Outer conductor ≤ 2 mohms

Insulation resistance: ≥ 500 mohms

Durability: ≥ 300 cycles

Gold plating



所有棱角倒钝去毛刺
未注形位公差均按10级
未注公差尺寸均按IT12级

| | | | | | | | | | |
|----------|----|----|----|-----|-------------------|--|----|----------------|----|
| | | | | | 涂镀 | | | | |
| | | | | | SMA-KE(正四脚) 成品 | | 图号 | KEX8.034.018-1 | |
| 更改 标记 | 数量 | 签名 | 日期 | 文件号 | 材料 | | 重量 | 比例 | 规格 |
| 设计 | | | | | | | 共 | 张 | 第 |
| 绘制 | | | | | | | | | |
| 审核 | | | | | | | | | |
| 批准 | | | | | | | | | |
| 旧底图 | | | | | | | | | |