



2N7002KW

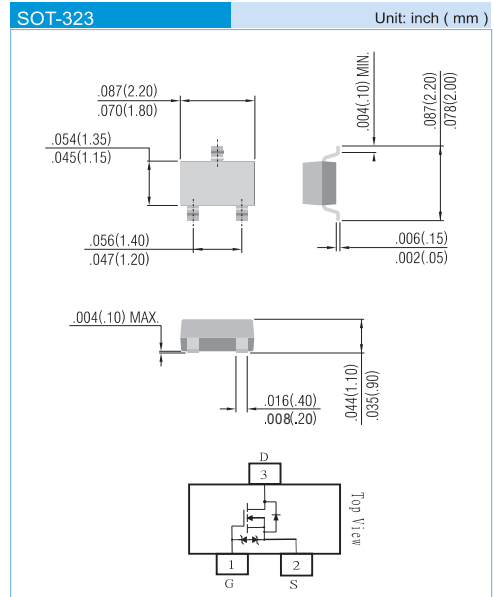
60V N-Channel Enhancement Mode MOSFET - ESD Protected

FEATURES

- $R_{DS(ON)}, V_{GS}@10V, I_{DS}@500mA=3\Omega$
- $R_{DS(ON)}, V_{GS}@4.5V, I_{DS}@200mA=4\Omega$
- Advanced Trench Process Technology
- High Density Cell Design For Ultra Low On-Resistance
- Very Low Leakage Current In Off Condition
- Specially Designed for Battery Operated Systems, Solid-State Relays Drivers : Relays, Displays, Lamps, Solenoids, Memories, etc.
- ESD Protected 2KV HBM
- Lead free in compliance with EU RoHS 2011/65/EU directive
- Green molding compound as per IEC61249 Std. . (Halogen Free)

MECHANICAL DATA

- Case: SOT-323 Package
- Terminals: Solderable per MIL-STD-750, Method 2026
- Approx weight: 0.0002 ounce, 0.005 gram
- Marking: K72



Maximum RATINGS and Thermal Characteristics ($T_A=25^{\circ}\text{C}$ unless otherwise noted)

| PARAMETER | Symbol | Limit | Units |
|---|-----------------|--------------|-----------------------------|
| Drain-Source Voltage | V_{DS} | 60 | V |
| Gate-Source Voltage | V_{GS} | ± 20 | V |
| Continuous Drain Current | I_D | 115 | mA |
| Pulsed Drain Current ¹⁾ | I_{DM} | 800 | mA |
| Maximum Power Dissipation | P_D | 200 120 | mW |
| Operating Junction and Storage Temperature Range | T_J, T_{STG} | -55 to + 150 | $^{\circ}\text{C}$ |
| Junction-to Ambient Thermal Resistance(PCB mounted) ²⁾ | $R_{\theta JA}$ | 625 | $^{\circ}\text{C}/\text{W}$ |

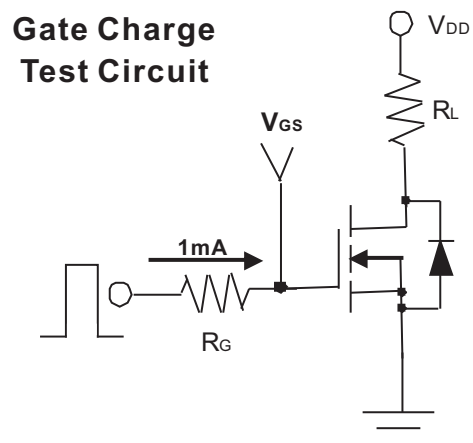
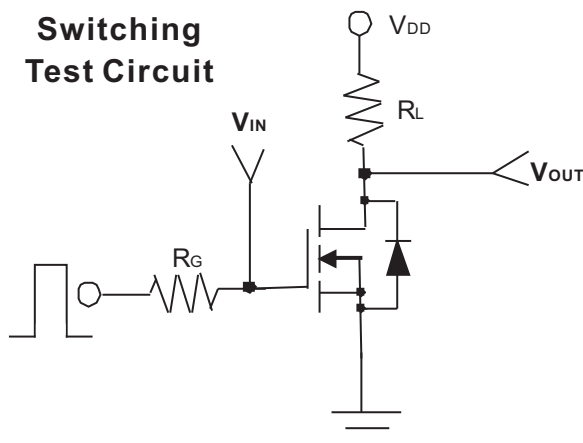
Note: 1. Maximum DC current limited by the package
 2. Surface mounted on FR4 board, $t \leq 10$ sec
 3. Pulse width $\leq 300\mu\text{s}$, Duty cycle $\leq 2\%$



2N7002KW

ELECTRICAL CHARACTERISTICS

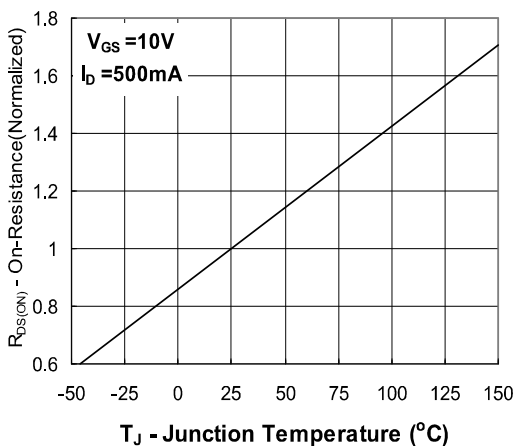
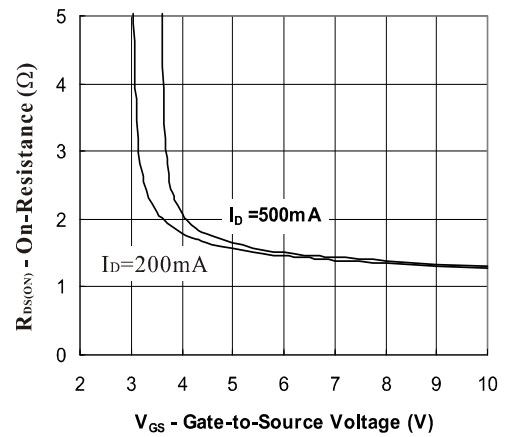
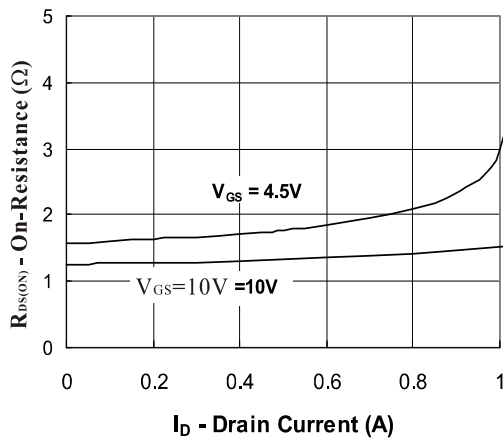
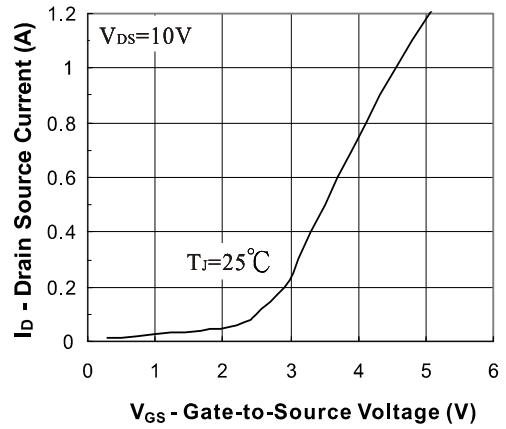
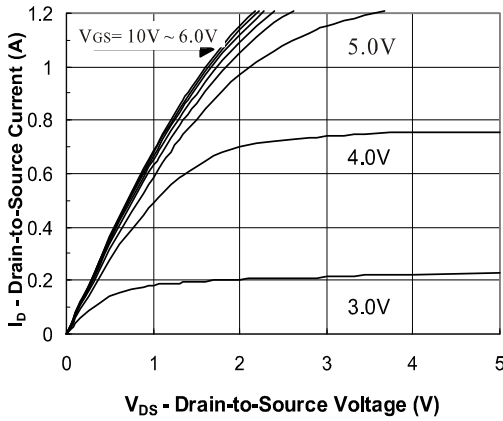
| Parameter | Symbol | Test Condition | Min. | Typ. | Max. | Units |
|----------------------------------|--------------|---|------|------|------|-------|
| Static | | | | | | |
| Drain-Source Breakdown Voltage | BV_{DSS} | $V_{GS}=0V, I_D=10\mu A$ | 60 | - | - | V |
| Gate Threshold Voltage | $V_{GS(th)}$ | $V_{DS}=V_{GS}, I_D=250\mu A$ | 1 | - | 2.5 | V |
| Drain-Source On-State Resistance | $R_{DS(on)}$ | $V_{GS}=4.5V, I_D=200mA$ | - | - | 4.0 | Ω |
| Drain-Source On-State Resistance | $R_{DS(on)}$ | $V_{GS}=10V, I_D=500mA$ | - | - | 3.0 | |
| Zero Gate Voltage Drain Current | I_{DSS} | $V_{DS}=60V, V_{GS}=0V$ | - | - | 1 | μA |
| Gate Body Leakage | I_{GSS} | $V_{GS}=\pm 20V, V_{DS}=0V$ | - | - | ±10 | μA |
| Forward Transconductance | g_{fs} | $V_{DS}=15V, I_D=250mA$ | 100 | - | - | mS |
| Dynamic | | | | | | |
| Total Gate Charge | Q_g | $V_{DS}=15V, I_D=200mA$ $V_{GS}=4.5V$ | - | - | 0.8 | nC |
| Turn-On Delay Time | t_{on} | $V_{DD}=30V, R_L=150\Omega$ $I_D=200mA, V_{GEN}=10V$ $R_G=10\Omega$ | - | - | 20 | ns |
| Turn-Off Delay Time | t_{off} | | - | - | 40 | |
| Input Capacitance | C_{iss} | $V_{DS}=25V, V_{GS}=0V$ $f=1.0MHz$ | - | - | 35 | pF |
| Output Capacitance | C_{oss} | | - | - | 10 | |
| Reverse Transfer Capacitance | C_{rss} | | - | - | 5 | |
| Source-Drain Diode | | | | | | |
| Diode Forward Voltage | V_{SD} | $I_S=200mA, V_{GS}=0V$ | - | 0.82 | 1.3 | V |
| Continuous Diode Forward Current | I_S | - | - | - | 115 | mA |
| Pulsed Diode Forward Current | I_{SM} | - | - | - | 800 | mA |





2N7002KW

Typical Characteristics Curves ($T_A=25^\circ\text{C}$, unless otherwise noted)





2N7002KW

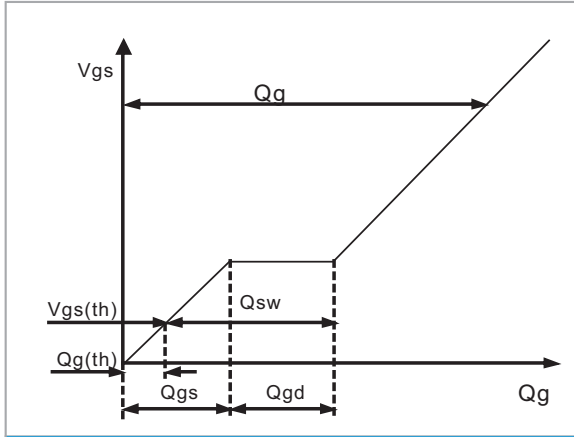


Fig.6 - Gate Charge Waveform

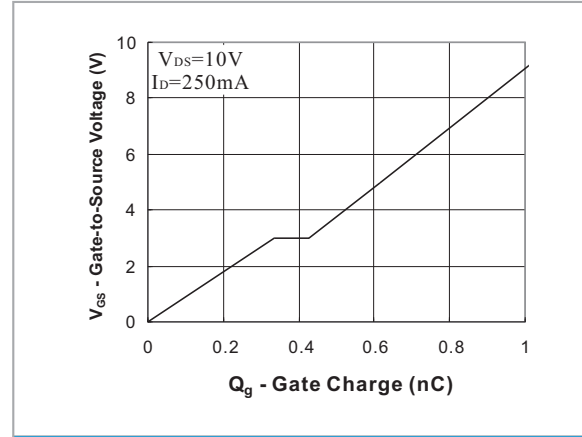


Fig.7 - Gate Charge

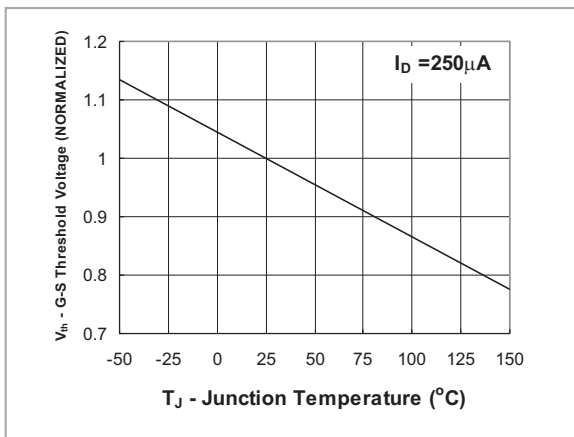


Fig.8 - Threshold Voltage vs Temperature

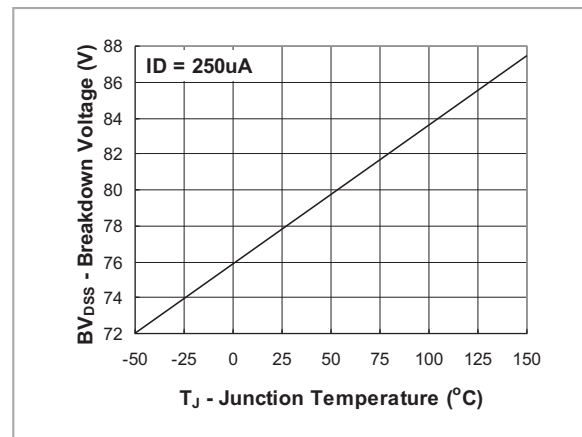


Fig.9 - Breakdown Voltage vs Junction Temperature

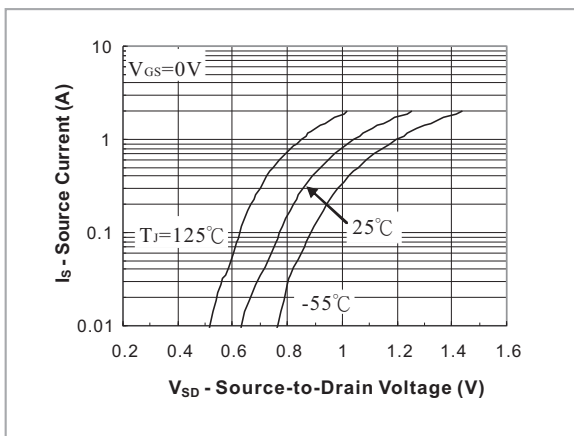


Fig.10 - Source-Drain Diode Forward Voltage

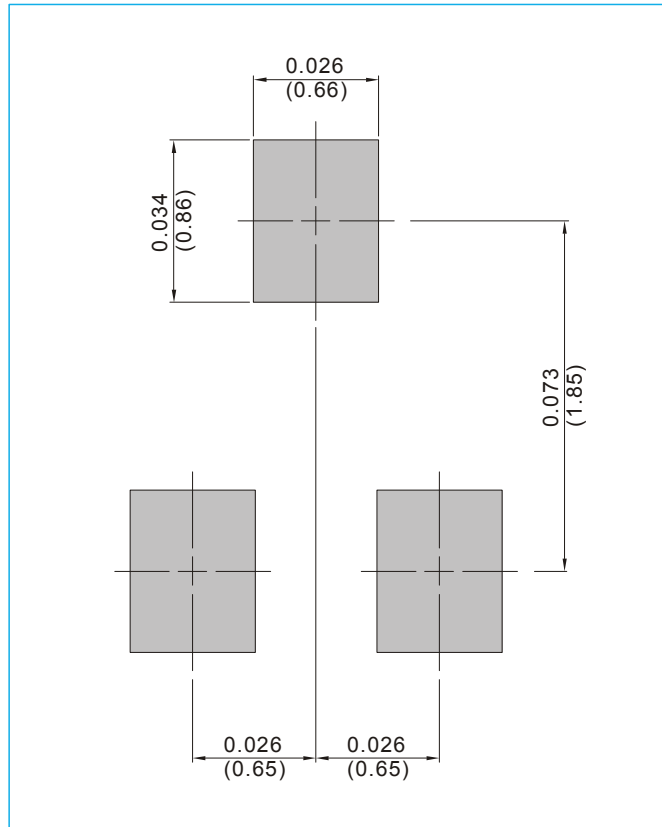


2N7002KW

MOUNTING PAD LAYOUT

SOT-323

Unit : inch(mm)



ORDER INFORMATION

- Packing information
T/R - 12K per 13" plastic Reel
T/R - 3K per 7" plastic Reel



2N7002KW

Part No_packing code_Version

2N7002KW_R1_00001

2N7002KW_R2_00001

For example :

RB500V-40_R2_00001



| Packing Code XX | | | | Version Code XXXXX | | |
|--------------------------------------|----------------------|----------------------------------|----------------------|---------------------------|----------------------|---------------------------------------|
| Packing type | 1 st Code | Packing size code | 2 nd Code | HF or RoHS | 1 st Code | 2 nd ~5 th Code |
| Tape and Ammunition Box (T/B) | A | N/A | 0 | HF | 0 | serial number |
| Tape and Reel (T/R) | R | 7" | 1 | RoHS | 1 | serial number |
| Bulk Packing (B/P) | B | 13" | 2 | | | |
| Tube Packing (T/P) | T | 26mm | X | | | |
| Tape and Reel (Right Oriented) (TRR) | S | 52mm | Y | | | |
| Tape and Reel (Left Oriented) (TRL) | L | PANASERT T/B CATHODE UP (PBCU) | U | | | |
| FORMING | F | PANASERT T/B CATHODE DOWN (PBCD) | D | | | |



2N7002KW

Disclaimer

- Reproducing and modifying information of the document is prohibited without permission from Panjit International Inc..
- Panjit International Inc. reserves the rights to make changes of the content herein the document anytime without notification. Please refer to our website for the latest document.
- Panjit International Inc. disclaims any and all liability arising out of the application or use of any product including damages incidentally and consequentially occurred.
- Panjit International Inc. does not assume any and all implied warranties, including warranties of fitness for particular purpose, non-infringement and merchantability.
- Applications shown on the herein document are examples of standard use and operation. Customers are responsible in comprehending the suitable use in particular applications. Panjit International Inc. makes no representation or warranty that such applications will be suitable for the specified use without further testing or modification.
- The products shown herein are not designed and authorized for equipments requiring high level of reliability or relating to human life and for any applications concerning life-saving or life-sustaining, such as medical instruments, transportation equipment, aerospace machinery et cetera. Customers using or selling these products for use in such applications do so at their own risk and agree to fully indemnify Panjit International Inc. for any damages resulting from such improper use or sale.
- Since Panjit uses lot number as the tracking base, please provide the lot number for tracking when complaining.

Mouser Electronics

Authorized Distributor

Click to View Pricing, Inventory, Delivery & Lifecycle Information:

[Panjit:](#)

[2N7002KW_R2_000A2](#) [2N7002KW_R1_00001](#) [2N7002KW_R2_10001](#) [2N7002KW_R2_00001](#)
[2N7002KW_R1_000A2](#) [2N7002KW_R1_10001](#)