

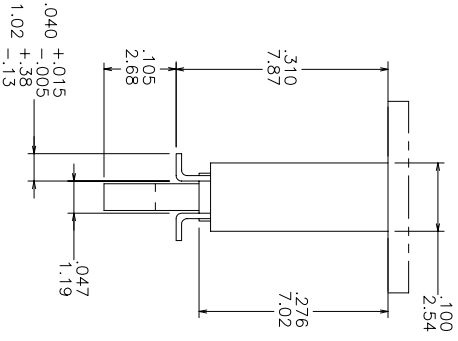
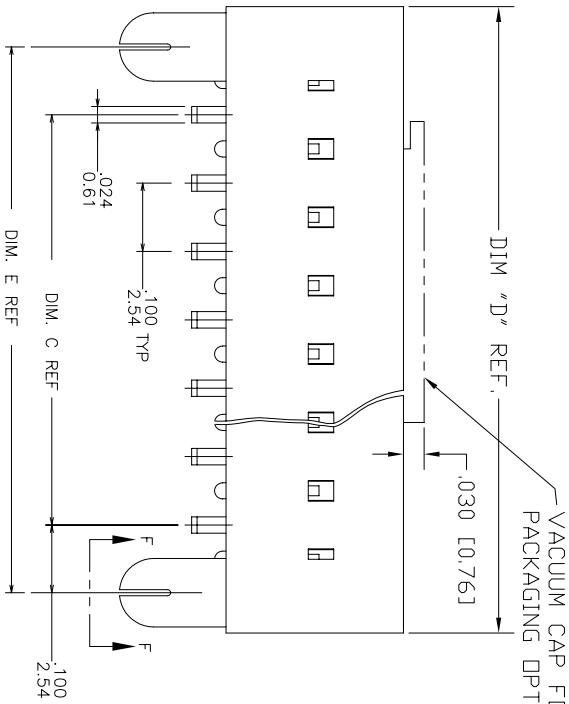
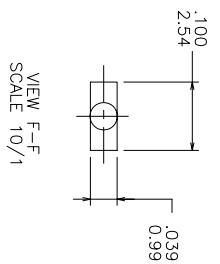
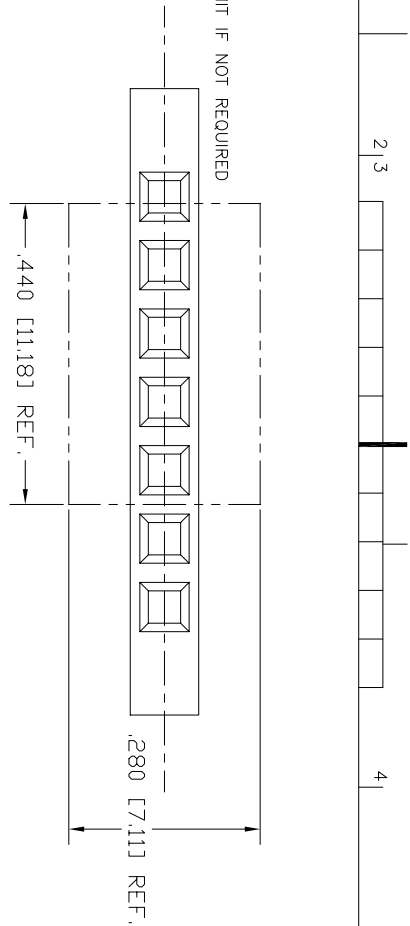


FCIconnect.com

Copyright FCI

PRODUCT NUMBER  
 68617-XXX-LF  
 SEE TABLE

LEAD FREE OPTION  
 PACKAGING OPTION NOTE 10.0MIL IF NOT REQUIRED  
 NO. OF POSITIONS PER ROW  
 PLATING CODE  
 BASE PART NUMBER



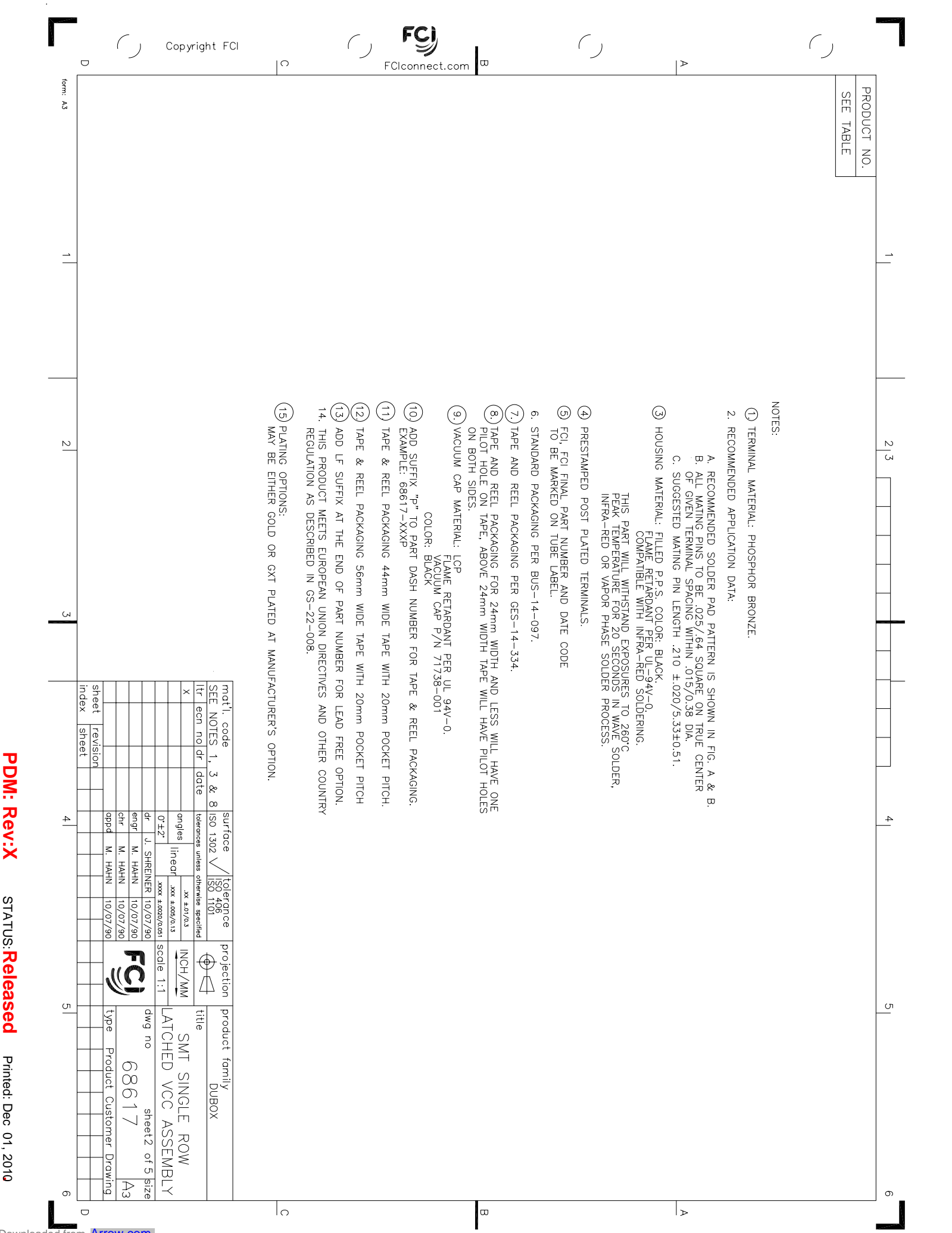
mat'l. code	surface	tolerance	projection	product family
SEE NOTES 1, 3 & 8	ISO 1302	ISO 4106	INCH/MM	DUBOX
tr ecn no dr dot	tolerance unless otherwise specified	xxx ±.01/.03		
R V20732 GIP 04/17/02	drangles	xxx ±.005/0.13	Scale 1:1	title
S V21654 GIP 10/15/02	lineof			SMT SINGLE ROW
T V03-0309 HTB 04/28/03 0±Z	xxxx ±.0020/0.051			LATCHED VCC ASSEMBLY
U V05-0463 DPU 06/28/05 dr	J. SHREINER 10/07/90			dwg no
V M06-0237 MN 06/17/08 engr	M. HAHN 10/07/90			68617
W M06-0433 AGS 10/31/06 chr	M. HAHN 10/07/90			sheet 1 of 5 size
X M07-0198 MHT 4/24/07 appd	M. HAHN 10/07/90			A3
sheet revision	X X X X X			Product Customer Drawing
index sheet	1 2 3 4 5			

PRODUCT NO.  
SEE TABLE

NOTES:

- ① TERMINAL MATERIAL: PHOSPHOR BRONZE.
2. RECOMMENDED APPLICATION DATA:
  - A. RECOMMENDED SOLDER PAD PATTERN IS SHOWN IN FIG. A & B.
  - B. ALL MATING PINS TO BE .025/.64 SQUARE ON TRUE CENTER OF GIVEN TERMINAL SPACING WITHIN .015/0.38 DIA.
  - C. SUGGESTED MATING PIN LENGTH .210 ±.020/5.33±0.51.
- ③ HOUSING MATERIAL: FILLED P.P.S. COLOR: BLACK.  
FLAME RETARDANT PER UL-94V-0  
COMPATIBLE WITH INFRA-RED SOLDERING.  
THIS PART WILL WITHSTAND EXPOSURES TO 260°C  
PEAK TEMPERATURE FOR 20 SECONDS IN WAVE SOLDER,  
INFRA-RED OR VAPOR PHASE SOLDER PROCESS.
- ④ PRESTAMPED POST PLATED TERMINALS.
- ⑤ FCI FINAL PART NUMBER AND DATE CODE TO BE MARKED ON TUBE LABEL.
6. STANDARD PACKAGING PER BUS-14-097.
- ⑦ TAPE AND REEL PACKAGING PER GES-14-334.
- ⑧ TAPE AND REEL PACKAGING FOR 24mm WIDTH AND LESS WILL HAVE ONE PILOT HOLE ON TAPE, ABOVE 24mm WIDTH TAPE WILL HAVE PILOT HOLES ON BOTH SIDES.
- ⑨ VACUUM CAP MATERIAL: LCP  
FLAME RETARDANT PER UL 94V-0.  
COLOR: BLACK  
VACUUM CAP P/N 71738-001
- ⑩ ADD SUFFIX "P" TO PART DASH NUMBER FOR TAPE & REEL PACKAGING.  
EXAMPLE: 68617-XXXXP
- ⑪ TAPE & REEL PACKAGING 44mm WIDE TAPE WITH 20mm POCKET PITCH.
- ⑫ TAPE & REEL PACKAGING 56mm WIDE TAPE WITH 20mm POCKET PITCH
- ⑬ ADD LF SUFFIX AT THE END OF PART NUMBER FOR LEAD FREE OPTION.
14. THIS PRODUCT MEETS EUROPEAN UNION DIRECTIVES AND OTHER COUNTRY REGULATION AS DESCRIBED IN GS-22-008.
- ⑮ PLATING OPTIONS:  
MAY BE EITHER GOLD OR GXT PLATED AT MANUFACTURER'S OPTION.

mat'l. code	surface	tolerance	projection	product family
SEE NOTES 1, 3 & 8	ISO 1302	ISO 1101	INCH/MM	DUBOX
X	dr	xxx ±.01/0.3	Scale 1:1	SMT SINGLE ROW
	angles	xxx ±.005/0.13		LATCHED VCC ASSEMBLY
	dr	xxxx ±.0020/0.051		sheet 2 of 5 size
	engr			68617
	chr			Product Customer Drawing
	qppd			A3
sheet index	revision			



PRODUCT NO NOTE 13	PLATING CONTACT AREA NOTE 15	PLATING SOLDER TAIL	MATERIAL REF.
68617-2XX	15u" / .38u Au OR GXT MIN OVER 50u" / 1.27u Ni MIN	100u" / 160u" SN 2.54u / 4.06u	NOTE 3 & 4
68617-3XX	30u" / .76u Au OR GXT MIN OVER 50u" / 1.27u Ni MIN	100u" / 160u" SN 2.54u / 4.06u	NOTE 3 & 4
68617-6XX	30u" / .76u Au OR GXT MIN OVER 50u" / 1.27u Ni MIN	100u" / 160u" SN 2.34u / 4.06u	NOTE 3 & 4
68617-8XX	30u" / .76u Au MIN OVER 50u" / 1.27u Ni MIN	100u" / 160u" SN 2.54u / 4.06u	NOTE 3 & 4

OBSOLETE	
----------	--

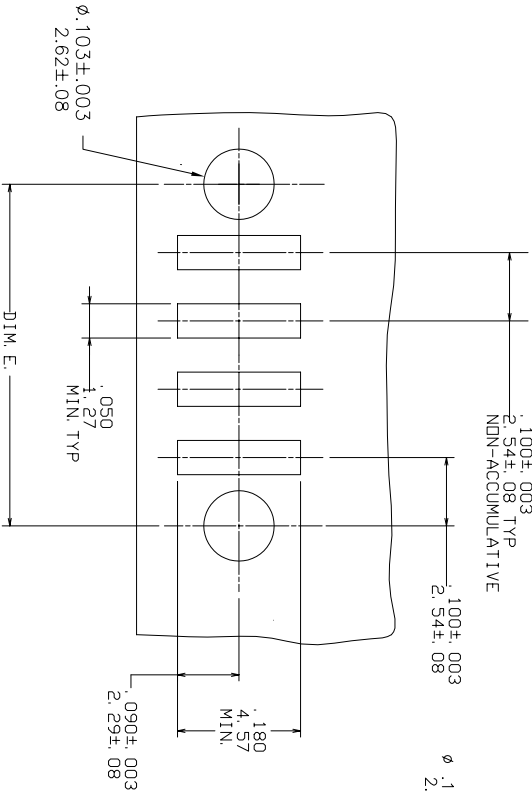


FIGURE A  
TOP ENTRY  
.025/.64 SQ PIN

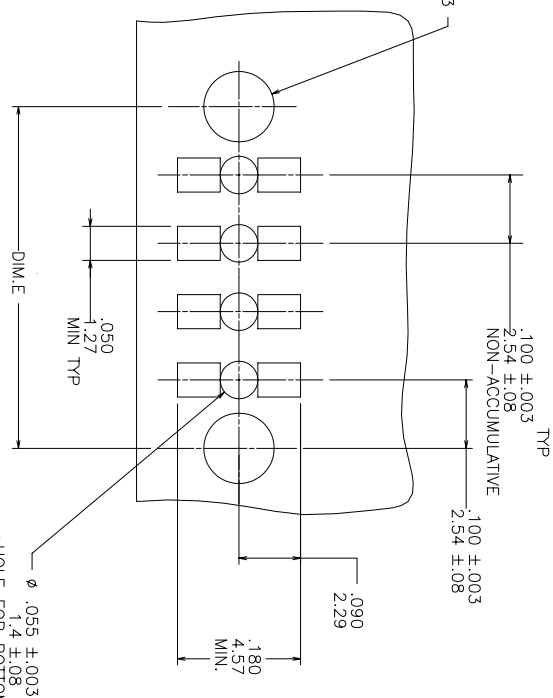


FIGURE B  
BOTTOM ENTRY (THROUGH PWB)  
.025/.64 SQ PIN

HOLE FOR BOTTOM ENTRY  
.025/.64 SQUARE PIN.

mat'l. code	surface	tolerance	projection	product family
	ISO 1302	ISO 1101	INCH/MM	DUBOX
tr	ecm no	dr	date	title
X				SMT SINGLE ROW LATCHED VCC ASSEMBLY
	angles	line of	scale	dwg no
	0 ± 2°	xxxx x.xxxx/0.051	1:1	68617
	dr	J. SHREINER	10/07/90	sheet 3 of 5 size
	enfr	M. HAHN	10/07/90	A3
	chr	M. HAHN	10/07/90	
	oppd	M. HAHN	10/07/90	
sheet	revision			
index	sheet			



type	Product Customer Drawing
------	--------------------------

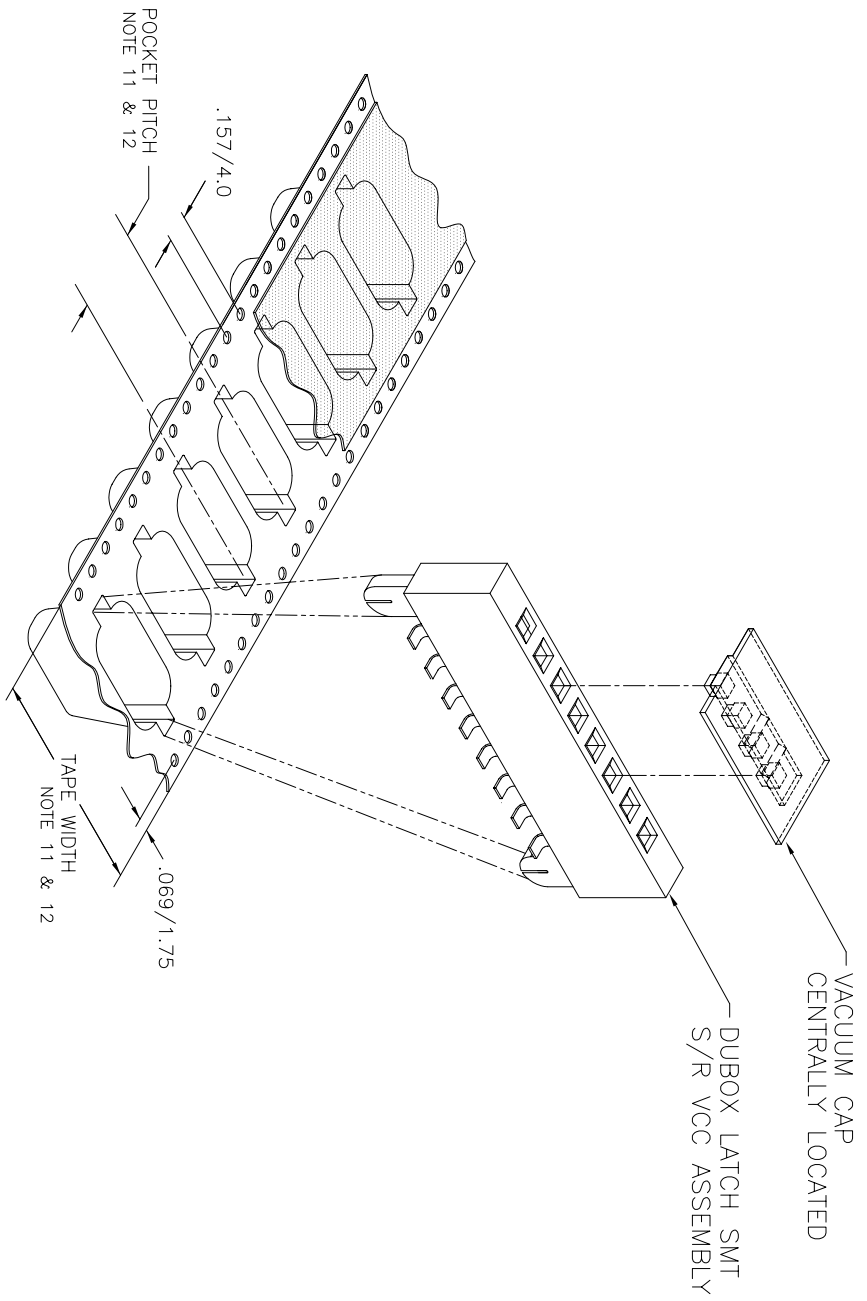


FCIconnect.com

Copyright FCI

form: A3

PRODUCT NO.  
SEE TABLE



TAPE AND REEL PACKAGING ONLY

mat'l. code	surface	tolerance	projection	product family
ISO 1302	ISO 406	ISO 1101	DUBOX	
ISO 1101	tolerances unless otherwise specified	XX ±.01/.03	INCH/MM	title
ISO 1101	0° ±.2°	.XXX ±.005/.013	scale 1:1	SMT SINGLE ROW
ISO 1101	linecd	.XXX ±.005/.013		LATCHED VCC ASSEMBLY
ISO 1101	dr	J. SHREINER		dwg no
ISO 1101	engr	M. HAHN		68617
ISO 1101	chr	M. HAHN		Sheet 4 of 5 size
ISO 1101	pppd	M. HAHN		A3
ISO 1101	sheet	revision		Product Customer Drawing
ISO 1101	index	sheet		

PRODUCT NO NOTE 13	NO. OF POS.	DIM C	DIM D	DIM E	TAPE & REEL PACKAGING	LF OPTION
68617-Y02	1 X 2	.100/2.54	.417/10.59	.300/7.62	NO	↕
-Y03	1 X 3	.200/5.08	.517/13.13	.400/10.16	NO	
-Y04	1 X 4	.300/7.62	.617/15.67	.500/12.70	NO	
-Y05	1 X 5	.400/10.16	.717/18.21	.600/15.24	NO	
-Y06	1 X 6	.500/12.70	.817/20.75	.700/17.78	NO	
-Y07	1 X 7	.600/15.24	.917/23.29	.800/20.32	NO	
-Y08	1 X 8	.700/17.78	1.017/25.83	.900/22.86	NO	
-Y09	1 X 9	.800/20.32	1.117/28.37	1.000/25.40	NO	
-Y10	1 X 10	.900/22.86	1.217/30.91	1.100/27.94	NO	
-Y11	1 X 11	1.000/25.40	1.317/33.45	1.200/30.48	NO	
-Y12	1 X 12	1.100/27.94	1.417/35.99	1.300/33.02	NO	
-Y13	1 X 13	1.200/30.48	1.517/38.53	1.400/35.56	NO	
-Y14	1 X 14	1.300/33.02	1.617/41.07	1.500/38.10	NO	
-Y15	1 X 15	1.400/35.56	1.717/43.61	1.600/40.64	NO	
-Y16	1 X 16	1.500/38.10	1.817/46.15	1.700/43.18	NO	
-Y17	1 X 17	1.600/40.64	1.917/48.69	1.800/45.72	NO	
-Y18	1 X 18	1.700/43.18	2.017/51.23	1.900/48.26	NO	
-Y19	1 X 19	1.800/45.72	2.117/53.77	2.000/50.80	NO	
-Y20	1 X 20	1.900/48.26	2.217/56.31	2.100/53.34	NO	
-Y21	1 X 21	2.000/50.80	2.317/58.85	2.200/55.08	NO	
-Y22	1 X 22	2.100/53.34	2.417/61.39	2.300/58.42	NO	
-Y23	1 X 23	2.200/55.88	2.517/63.93	2.400/60.96	NO	
-Y24	1 X 24	2.300/58.42	2.617/66.47	2.500/63.50	NO	
-Y25	1 X 25	2.400/60.96	2.717/69.01	2.600/66.04	NO	
-Y26 THRU -Y50					NO	
-Y07P	1 X 7	.600/15.24	.917/23.29	.800/20.32	YES	
-Y08P	1 X 8	0.700/17.78	1.017/25.83	0.900/22.86	YES	
-Y09P	1 X 9	.800/20.32	1.117/28.37	1.000/25.40	YES	
68617-Y12P	1 X 12	1.100/27.94	1.417/35.99	1.300/33.02	YES	

OBsolete  
NOTE 10 & 11  
NOTE 10 & 11

PRODUCT NO	NO. OF POS.	DIM C	DIM D	DIM E	TAPE & REEL PACKAGING	LF OPTION
68617-Y02	1 X 2	.100/2.54	.417/10.59	.300/7.62	NO	↕

mat'l. code	surface	tolerance	projection	product family
	ISO 1302	ISO 406		DUBOX
lit ecn no	date	tolerances unless otherwise specified	INCH/MM	title
X		0+/-2"	scale 1:1	SMT SINGLE ROW LATCHED VCC ASSEMBLY
		angles		dwg no
		linecd		68617
		xxxx #.005/0.13		sheet 5 of 5 size
		xxxx #.005/0.051		A3
		dr J. SHREINER		type Product Customer Drawing
		engr M. HAHN		
		chr M. HAHN		
		pppd M. HAHN		
sheet	revision			
index	sheet			