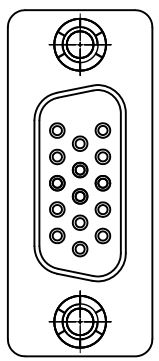
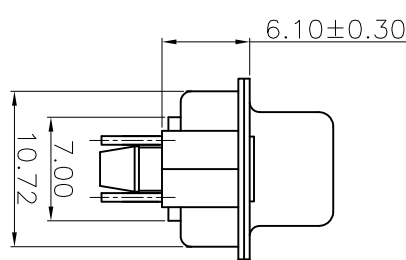


FOR 15P



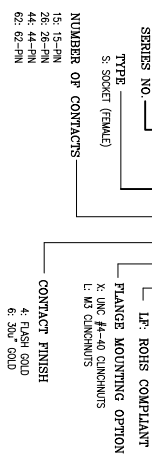
FOR 26/44/62P



REMARK:

- CHARACTERISTICS:
 RATED VOLTAGE: 250V
 RATED CURRENT: 2.5AMP
 CONTACT RESISTANCE: 25mohms MAX. INITIAL, 40mohms MAX. AFTER
 INSULATION RESISTANCE: 5000mohms MIN. at 500V DC
 DIELECTRIC STRENGTH: 750Vrms
 OPERATING TEMPERATURE RANGE: -55° C~105° C
 INSERTION/EXTRACTION FORCE PER CONTACT: 5N Max./0.2N Min.
 MATING/UNMATING CYCLES: 200MATING MIN FOR GOLD-FLASH 500MATING MIN FOR 30u" GOLD.
- MATERIAL:
 INSULATORS: THERMOPLASTIC G.F.(U94V-0) BLACK
 CONTACTS: COPPER ALLOY GOLD(G/F or 30u") TOP OVER CONTACT AREA, 100u" Min MATTE TIN TOP OVER SOLDER AREA, 50u" Min NICKEL UNDER PLATE.
 SHELL: CARBON STEEL, 100u" Min NICKEL TOP OVER, 50u" Min COPPER UNDER PLATE.
 HARPOON: COPPER ALLOY, 100u" Min MATTE TIN PLATED.

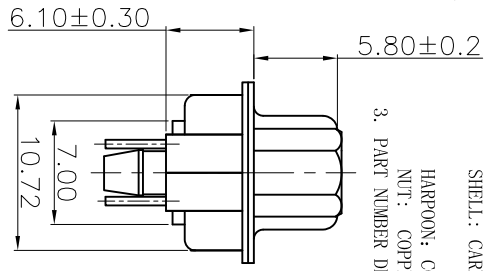
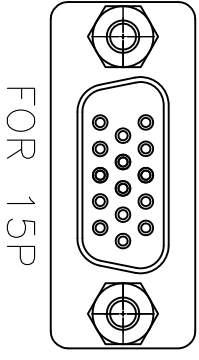
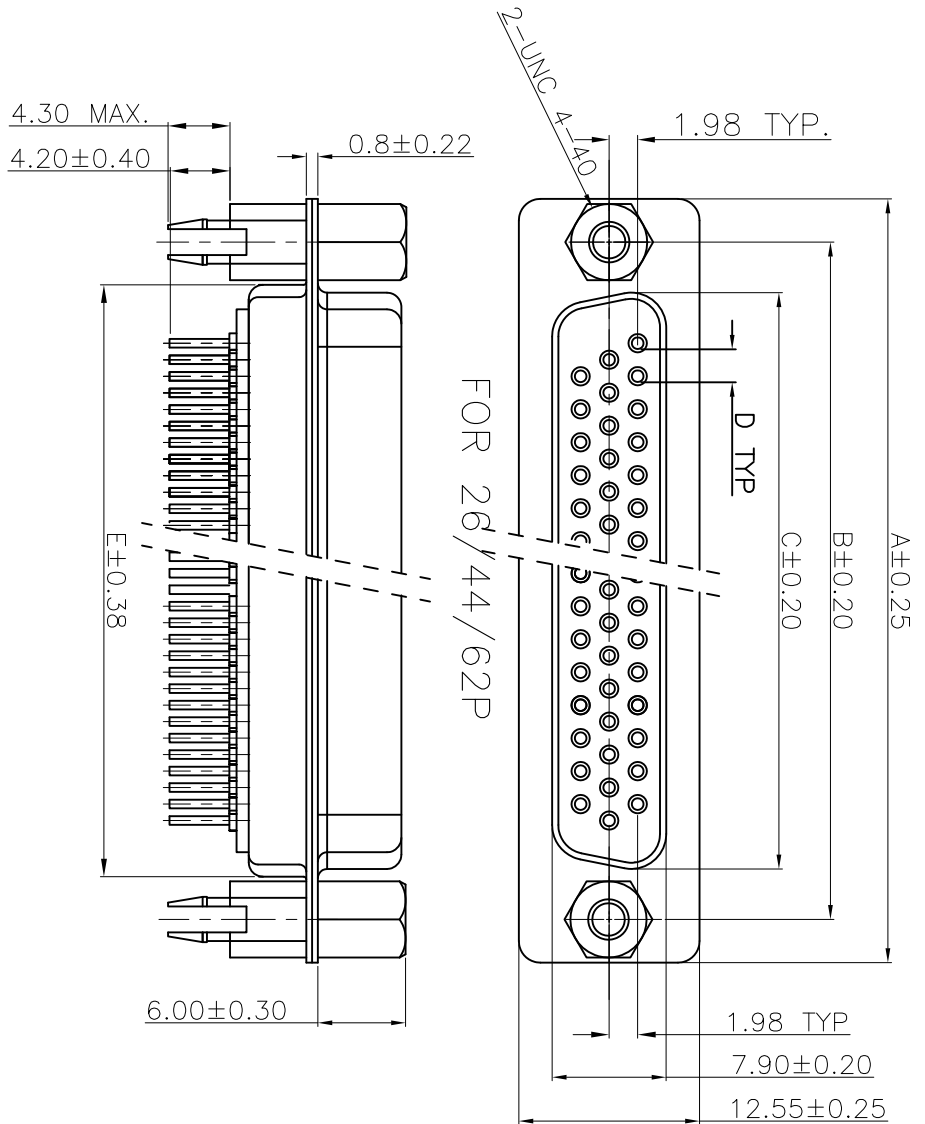
3. PART NUMBER DESCRIPTION: 10090929-S XX X X LP



POS.	A	B	C	D	E
15	30.81	24.99	16.33	2.29	19.10
26	39.24	33.32	24.66	2.29	27.75
44	53.04	47.04	38.38	2.29	41.30
62	69.32	63.50	54.84	2.41	57.40

POS.	A	B	C	D	E
15	30.81	24.99	16.33	2.29	19.10
26	39.24	33.32	24.66	2.29	27.75
44	53.04	47.04	38.38	2.29	41.30
62	69.32	63.50	54.84	2.41	57.40

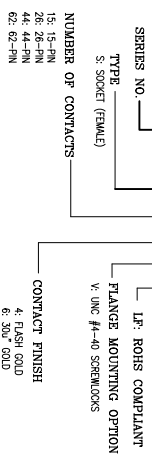
mat'l. code		ecn no		dr		ddate		lineor		angles		tolerances unless otherwise specified		projection		title		product family		code	
A T09-1156		J.H		J.H		12/10/09				0° ±2°		.XX ± 0.38		MM		H/D D-SUB FEMALE STRAIGHT		D-SUB		TMN	
B T10-0164		J.H		J.H		10/19/10						.XXX ± 0.10		1:1		A4		10090929		1 of 5	
sheet	revision	sheet	revision	1	2	3	4	5	dr	engr	chr	appr	JASON HSU	JASON HSU	GARY HSEH	JOSEPH HSA	10/19/10	10/19/10	10/19/10	10/19/10	10/19/10



REMARK: 1. CHARACTERISTICS:
 RATED VOLTAGE: 250V
 RATED CURRENT: 2.5AMP
 CONTACT RESISTANCE: 25mohms MAX. INITIAL, 40mohms MAX. AFTER, INSULATION RESISTANCE: 5000Mohms MIN. at 500V DC DIELECTRIC STRENGTH: 750VRMS OPERATING TEMPERATURE RANGE: -55° C~105° C INSERTION/EXTRACTION FORCE PER CONTACT: 5N Max./0.2N Min. MATTING/UMMATTING CYCLES: 200MATTINGS MIN FOR GOLD-FLASH 500MATTINGS MIN FOR 30u" GOLD.

2. MATERIAL:
 INSULATORS: THERMOPLASTIC G.F (U194V-0) BLACK
 CONTACTS: COPPER ALLOY, GOLD(G/F or 30U") TOP OVER CONTACT AREA, 100u" Min MATTE TIN TOP OVER SOLDER AREA, 50u" Min NICKEL UNDER PLATE.
 SHELL: CARBON STEEL, 100u" Min NICKEL TOP OVER, 50u" Min COPPER UNDER PLATE.
 HARPOON: COPPER ALLOY, 100u" Min MATTE TIN PLATED.
 NUT: COPPER ALLOY, 50u" Min NICKEL PLATED.

3. PART NUMBER DESCRIPTION: 10090929-S XX X X LP

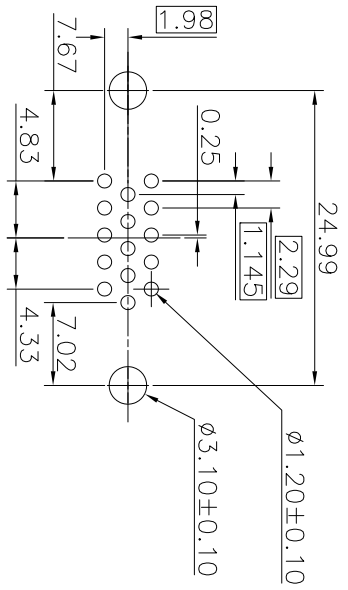


POS.	A	B	C	D	E
15	30.81	24.99	16.33	2.29	19.10
26	39.24	33.32	24.66	2.29	27.75
44	53.04	47.04	38.38	2.29	41.30
62	69.32	63.50	54.84	2.41	57.40

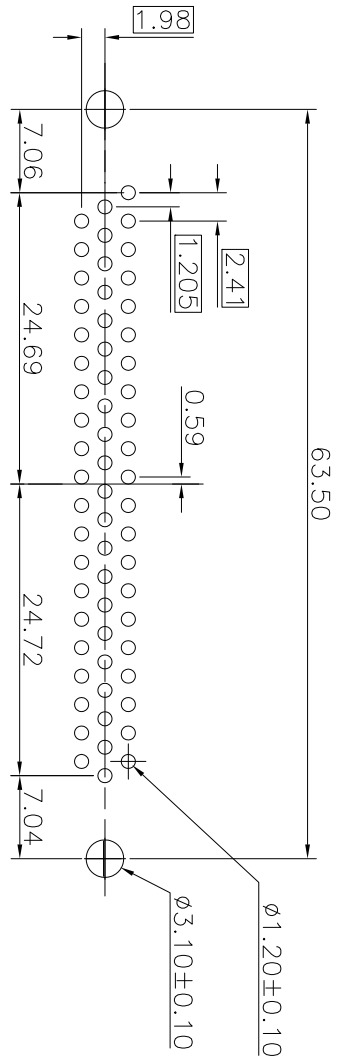
mat'l. code		tolerances unless otherwise specified	
ltr	ecn no	dr	ddate
B			
lineor		.XX ± 0.25	
angles		° ±2°	
dr	JASON HSU	10/19/10	
enfr	JASON HSU	10/19/10	
chr	GARY HSIEH	10/19/10	
appl	JOSEPH HSA	10/19/10	

CUSTOMER COPY		title	
projection		H/D D-SUB FEMALE STRAIGHT	
scale	MM	product family	D-SUB
size	A4	dwg no	10090929
code		code	TWN
sheet		sheet	2 of 5

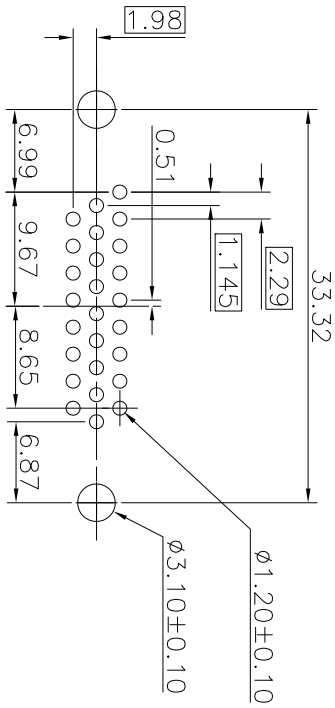
sheet index	revision sheet	code	code
1	2		
3			
4			



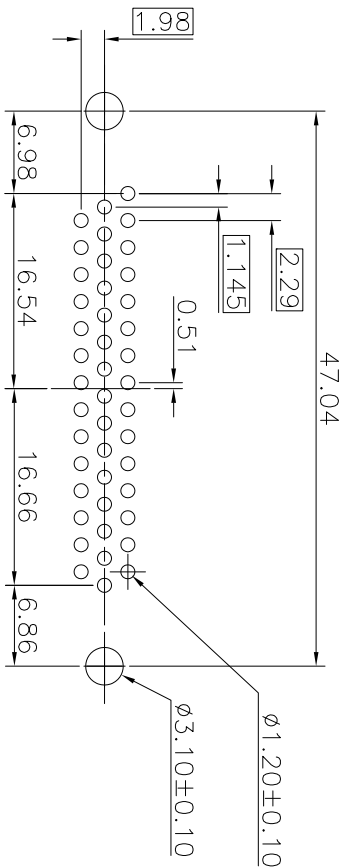
P.C.B LAYOUT(FOR 15P)



P.C.B LAYOUT(FOR 62P)



P.C.B LAYOUT(FOR 26P)



P.C.B LAYOUT(FOR 44P)

mat'l. code		tolerances unless otherwise specified		CUSTOMER COPY		FCI		www.fciconnect.com	
ltr	ecm no	dr	ddate	lineor	angles	projection	title	H/D	D-SUB FEMALE STRAIGHT PCB
B				.XX ± 0.38	0° ± 2°	MM		product family	D-SUB
				.XXX ± 0.10				size/ dwg no	10090929
								code	TMM
								sheet	3 of 5
sheet	revision			dr	JASON HSU	10/19/10			
index	sheet			engr	GARY HSEH	10/19/10			
				chr	JOSEPH HSA	10/19/10			
				appd					

1 | 2

3

4

ACAD

PDM: Rev:B

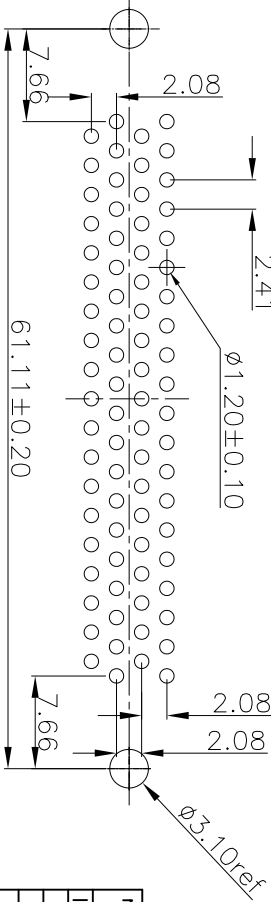
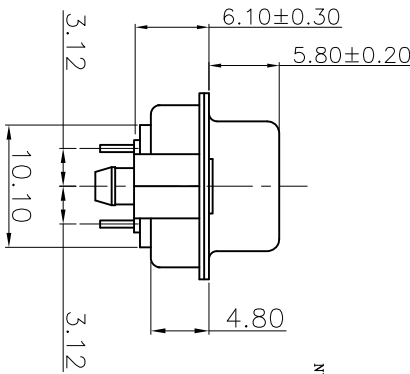
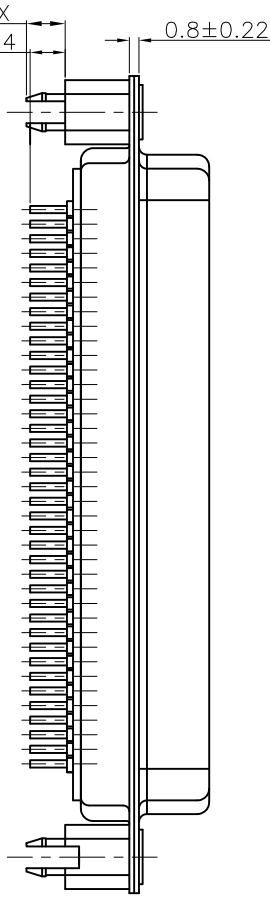
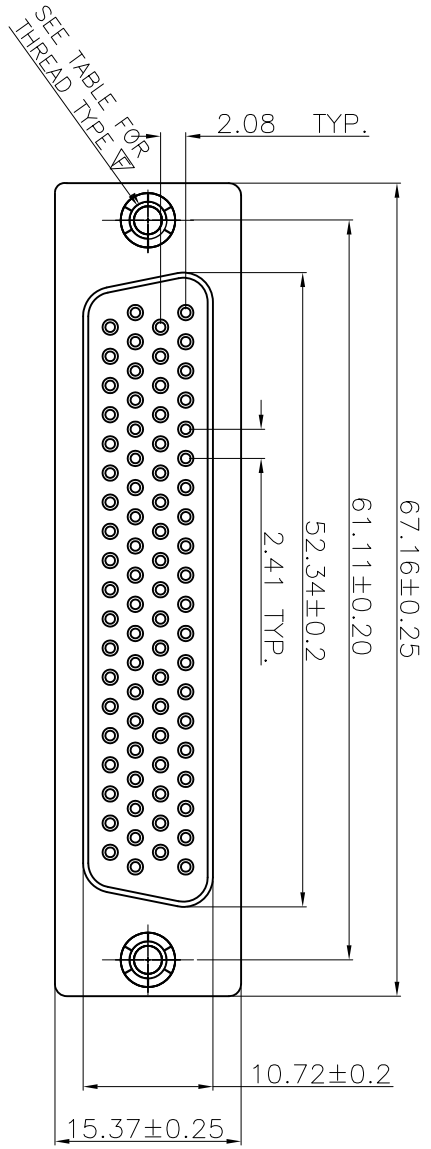
STATUS: Released

Printed: Nov 02, 2010

1 | 2

3

4



P.C.B LAYOUT

REMARK:

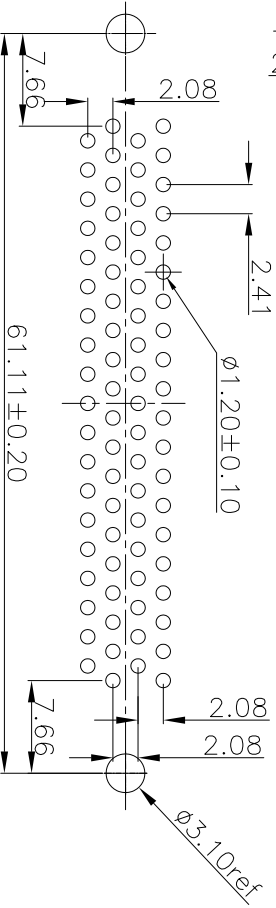
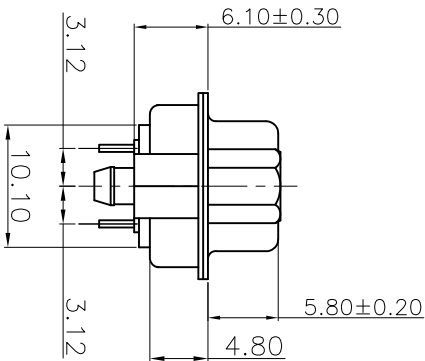
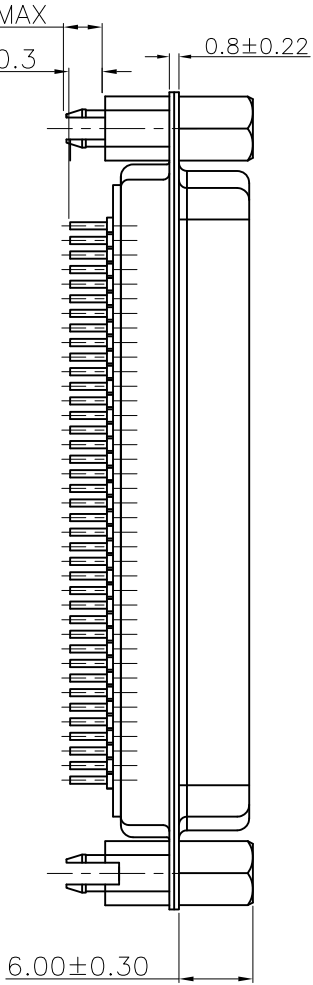
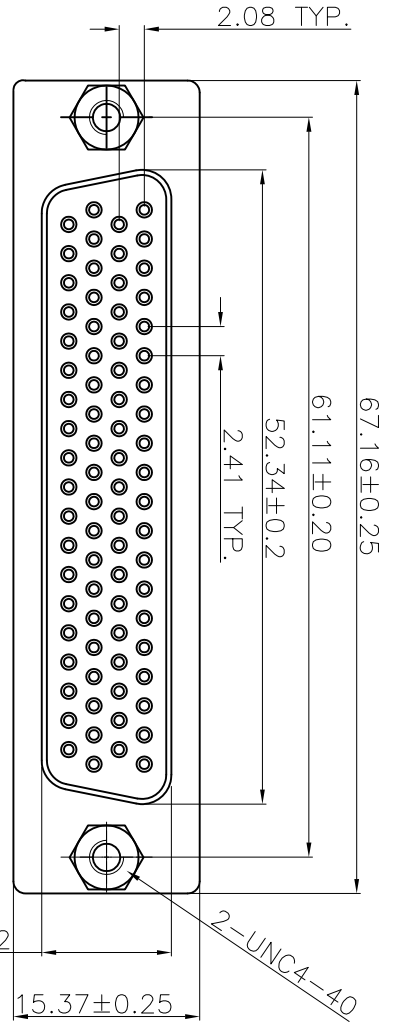
- CHARACTERISTICS:
 RATED VOLTAGE: 250V
 RATED CURRENT: 2.5AMP
 CONTACT RESISTANCE: 35mohms MAX. INITIAL,
 50mohms MAX. AFTER
 INSULATION RESISTANCE: 5000Mohms MIN.at 500V DC
 DIELECTRIC STRENGTH: 750V/MS
 OPERATING TEMPERATURE RANGE: -55° C~+105° C
 INSERTION/EXTRACTION FORCE PER CONTACT: 5N Max./0.2N Min.
 MATING/DMATING CYCLES: 200MATTINGS MIN FOR GOLD-FLASH
 500MATTINGS MIN FOR 30u" GOLD.
- MATERIAL:
 INSULATORS: THERMOPLASTIC G.F.(U194V-0) BLACK
 CONTACTS: COPPER ALLOY, (GOLD/G/F or 300") TOP OVER CONTACT
 AREA, 100u" Min MATTE TIN TOP OVER SOLDER AREA,
 50u" Min NICKEL UNDER PLATE.
 SHELL: CARBON STEEL, 100u" Min NICKEL TOP OVER,
 50u" Min COPPER UNDER PLATE.
 HARPOON: COPPER ALLOY, 100u" Min MATTE TIN PLATED.
- PART NUMBER DESCRIPTION: **10090929-S XX X X LP**

TYPE _____ L.F: ROHS COMPLIANT
 S: SOCKET (FEMALE) X: UNC #4-40 CLINCHNUTS
 NUMBER OF CONTACTS: 78-78-PIN L: M3 CLINCHNUTS
 CONTACT FINISH: 4: FLASH GOLD
 6: 30u" GOLD

POS.	PART NO.	THREAD TYPE
78	10090929-S78*LLF	M3X0.5
78	10090929-S78*XLF	UNC #4-40

mat'l. code	tolerances unless otherwise specified	CUSTOMER COPY	title
ltr	.XX ± 0.38	projection	H/D D-SUB FEMALE STRAIGHT
B	.XX ± 0.25	angles	product family D-SUB
	.XXX ± 0.10		size/ dwg no 10090929
	0° ±2°		code TMN
			sheet 4 of 5

sheet index	revision sheet	code
1	2	3
4	5	6



P.C.B LAYOUT

REMARK:
 1. CHARACTERISTICS:
 RATED VOLTAGE: 250V
 RATED CURRENT: 2.5AMP
 CONTACT RESISTANCE: 35mohms MAX. INITIAL, 50mohms MAX. AFTER.
 INSULATION RESISTANCE: 5000Mohms MIN. at 500V DC
 DIELECTRIC STRENGTH: 750VRMS
 OPERATING TEMPERATURE RANGE: -55° C~+105° C
 INSERTION/EXTRACTION FORCE PER CONTACT: 5N Max./0.2N Min.
 MATING/UNMATING CYCLES: 200MATING MIN FOR GOLD-PLASH 500MATING MIN FOR 30µ" GOLD.
 2. MATERIAL:
 INSULATORS: THERMOPLASTIC G. F.(UL94V-0) BLACK
 CONTACTS: COPPER ALLOY, GOLD(G/F or 30U") TOP OVER CONTACT AREA, 100µ" Min MATTE TIN TOP OVER SOLDER AREA, 50µ" Min NICKEL UNDER PLATE.
 SHELL: CARBON STEEL, 100µ" Min NICKEL TOP OVER, 50µ" Min COPPER UNDER PLATE.
 HARPOON: COPPER ALLOY , 100µ" Min MATTE TIN PLATED.
 NITS: COPPER ALLOY , 50µ" Min NICKEL PLATED.
 3. PART NUMBER DESCRIPTION:
10090929-S-XX X X LP
 SERIES NO. _____
 TYPE (FORM) _____
 S. SOCKET (FORM) _____
 NUMBER OF CONTACTS _____
 CONTACT FINISH _____
 4. FLASH GOLD _____
 6. 30µ" GOLD _____
 7. 75-9H _____
 8. _____
 9. _____
 10. _____
 11. _____
 12. _____
 13. _____
 14. _____
 15. _____
 16. _____
 17. _____
 18. _____
 19. _____
 20. _____
 21. _____
 22. _____
 23. _____
 24. _____
 25. _____
 26. _____
 27. _____
 28. _____
 29. _____
 30. _____
 31. _____
 32. _____
 33. _____
 34. _____
 35. _____
 36. _____
 37. _____
 38. _____
 39. _____
 40. _____
 41. _____
 42. _____
 43. _____
 44. _____
 45. _____
 46. _____
 47. _____
 48. _____
 49. _____
 50. _____
 51. _____
 52. _____
 53. _____
 54. _____
 55. _____
 56. _____
 57. _____
 58. _____
 59. _____
 60. _____
 61. _____
 62. _____
 63. _____
 64. _____
 65. _____
 66. _____
 67. _____
 68. _____
 69. _____
 70. _____
 71. _____
 72. _____
 73. _____
 74. _____
 75. _____
 76. _____
 77. _____
 78. _____
 79. _____
 80. _____
 81. _____
 82. _____
 83. _____
 84. _____
 85. _____
 86. _____
 87. _____
 88. _____
 89. _____
 90. _____
 91. _____
 92. _____
 93. _____
 94. _____
 95. _____
 96. _____
 97. _____
 98. _____
 99. _____
 100. _____

PART NO.: 10090929-S78*VLF

mat'l. code	tolerances unless otherwise specified			CUSTOMER COPY	title
B	.XX ± 0.38	.XX ± 0.25	.XXX ± 0.10	projection	H/D D-SUB FEMALE STRAIGHT
ltr	ecn no	dr	ddate	angles	product family
				0° ±2°	D-SUB
					size/ dwg no
					10090929
					code
					TMN
					sheet
					5 of 5
					revision
					sheet
					index