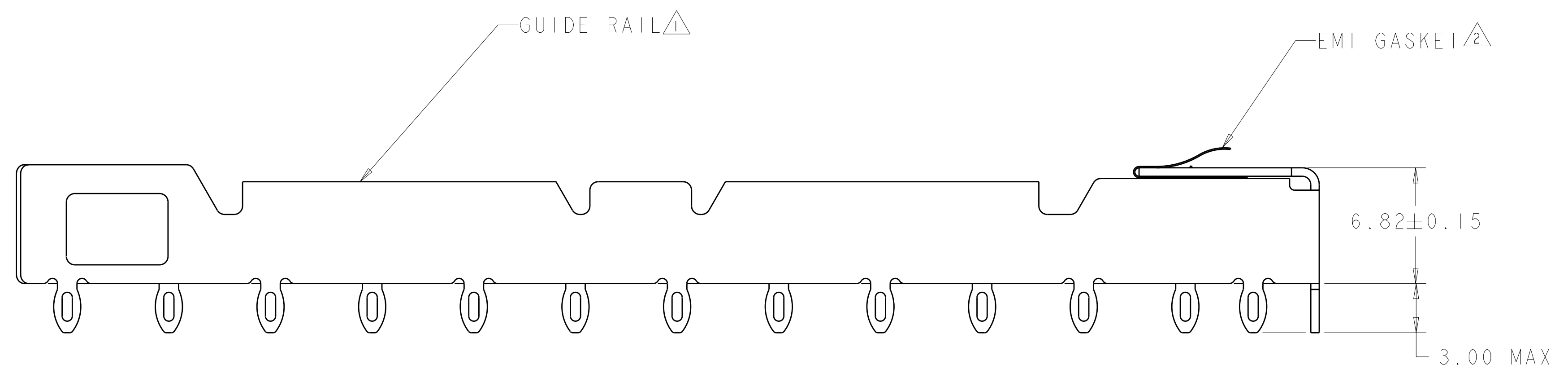
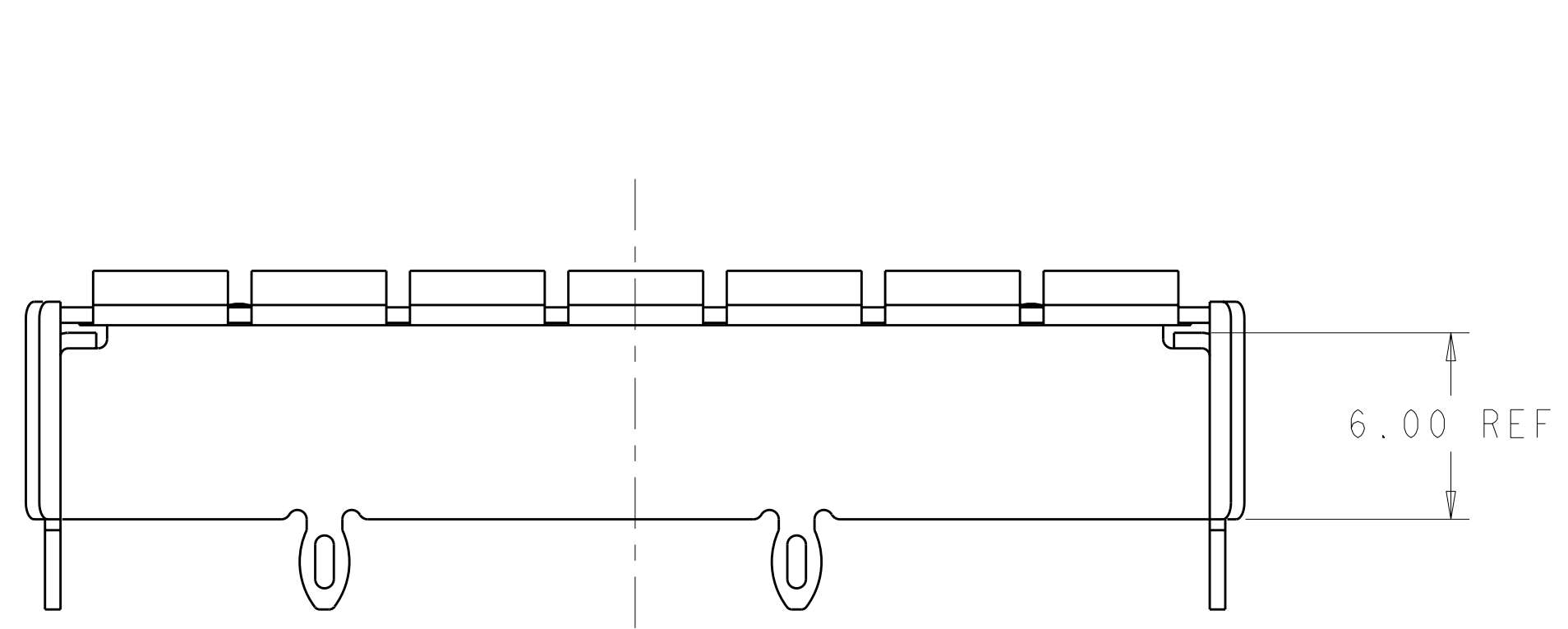
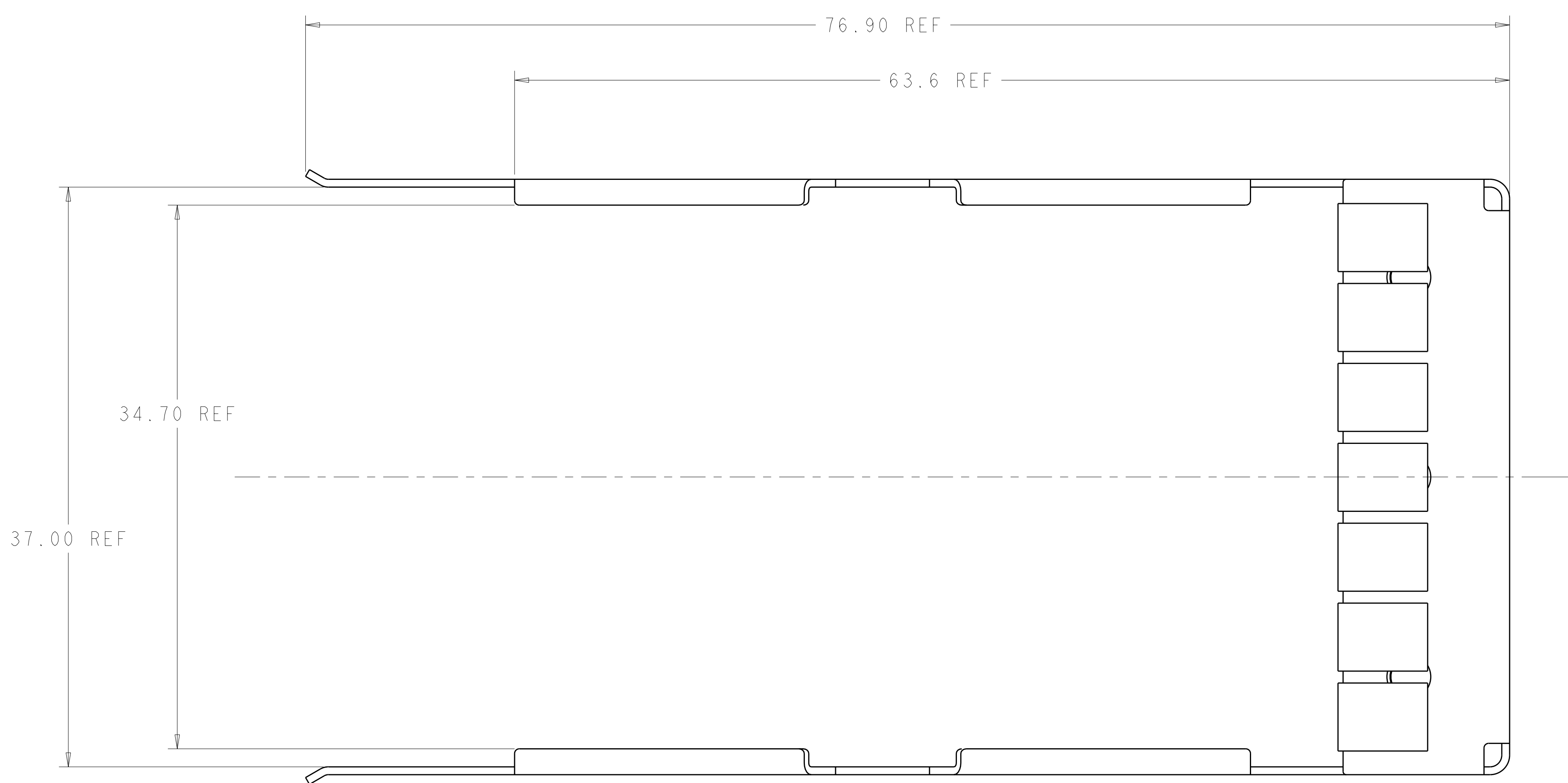


LOC	DIST	REV	DATE	BY	CHK	APPV
AG	00					

REV	DATE	DESCRIPTION	DATE	BY	CHK	APPV
5	11JUL2006	Ø 1.55±0.02 WAS Ø 1.45 ±0.02				
A	11APR07	RELEASED PER ECO-07-007698				

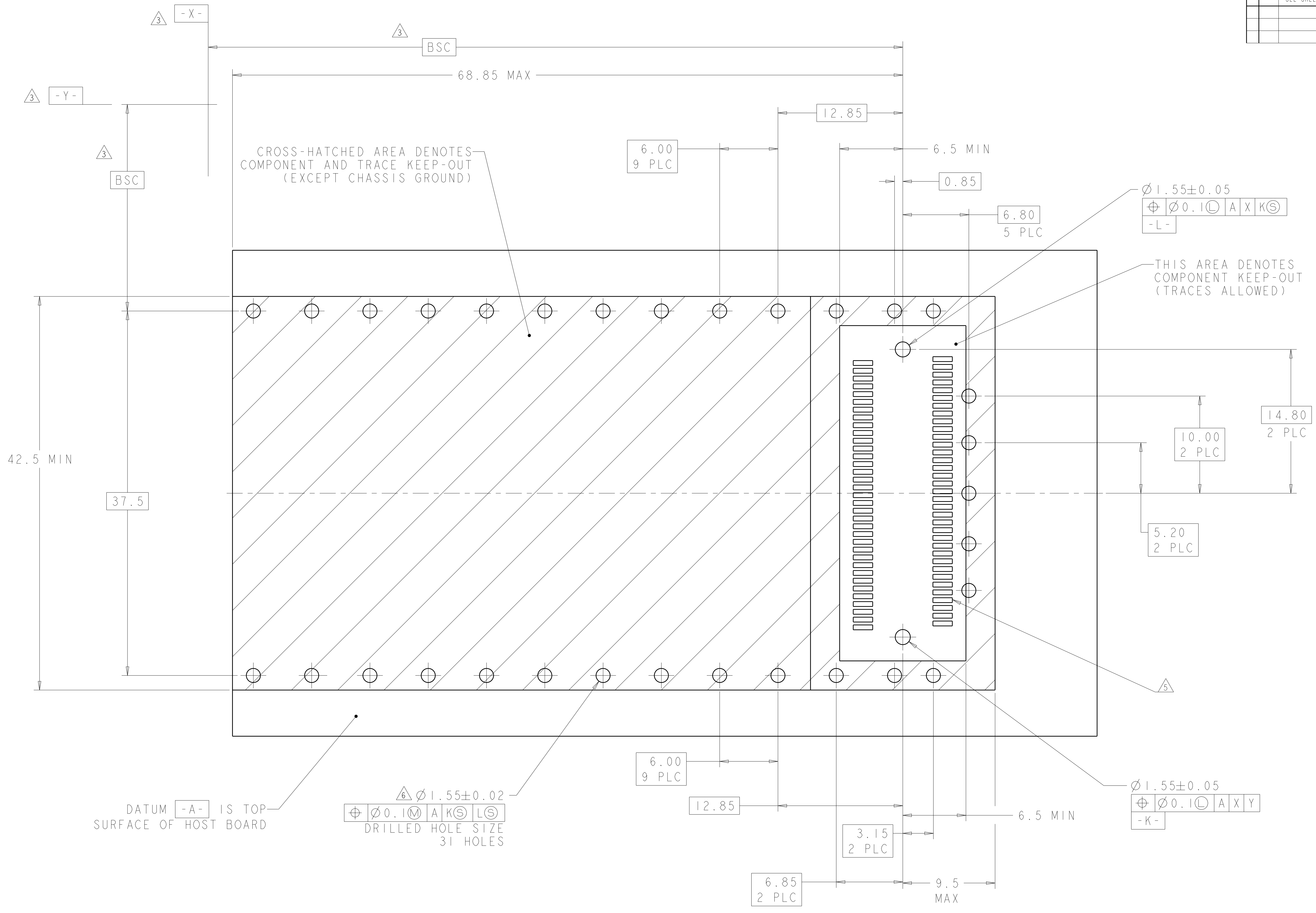
- △ GUIDE RAIL MATERIAL: COPPER ALLOY  
 GUIDE RAIL FINISH: 0.4 MICROMETERS MIN THK TIN COATING
- △ EMI GASKET MATERIAL: COPPER ALLOY  
 EMI GASKET PLATING: 2 MICROMETERS MIN THK TIN PLATE
- △ DATUMS X AND Y AND BSC DIMENSIONS TO BE ESTABLISHED BY CUSTOMER
- 4. DESIGN ACCEPTS MODULES THAT ARE COMPLIANT WITH X2 SPECIFICATION REV 2.0b
- △ SEE CUSTOMER DRAWING 1367337-1 FOR CONNECTOR PAD DIMENSIONS
- △ RECOMMENDATION FOR P.C. BOARD HOLES:  
 COPPER UNDERPLATE, 25-50 MICROMETERS THICK, FOLLOWED BY ANY OF THESE SURFACE FINISHES:
  - A. HASL SnPb: 35 MICROMETERS MAX THK
  - B. GALVANIC Au: 4-5 MICROMETERS Ni + 0.1-0.5 MICROMETERS Au
  - C. OSP: 0.2-0.5 MICROMETERS THK
  - D. IMMERSION Sn: 0.5 MICROMETERS MIN THK
  - E. IMMERSION Au: 4-5 MICROMETERS Ni + 0.1-0.5 MICROMETERS Au
  - F. IMMERSION Ag: 0.1-0.3 MICROMETERS
- 7. BARE EDGES PERMITTED
- 8. 3.0 MIN PRINTED CIRCUIT BOARD THICKNESS FOR BELLY TO BELLY APPLICATION
- 9. BEZEL REQUIREMENTS PER X2 MSA
- 10. REFERENCE INSTRUCTION SHEET 408-8997 FOR ADDITIONAL INSTRUCTIONS.



1367608-1  
 PART NUMBER

DIMENSIONS: mm 		TOLERANCES UNLESS OTHERWISE SPECIFIED: 9 PLC ±0.5 1 PLC ±0.2 5 PLC ±0.1 4 PLC ± ANGLES ± FINISH ±		DWN P. KERLIN 04MAR2004 CHK E. BRIGHT 04MAR2004 APVD - NAME PRODUCT SPEC APPLICATION SPEC WEIGHT CUSTOMER DRAWING		Tyco Electronics Harrisburg, PA 17105-3608 RAIL ASSY, GUIDE, X2 BELLY TO BELLY SIZE CAGE CODE DRAWING NO RESTRICTED TO A 00779 C=1367608 SCALE 5:1 SHEET 1 OF 3 REV A	
-----------------------	--	---	--	--	--	--	--

LOC		DIST		REVISIONS			
P	LTN	DESCRIPTION	DATE	DWN	APVD		
-	-	SEE SHEET 1	-	-	-		



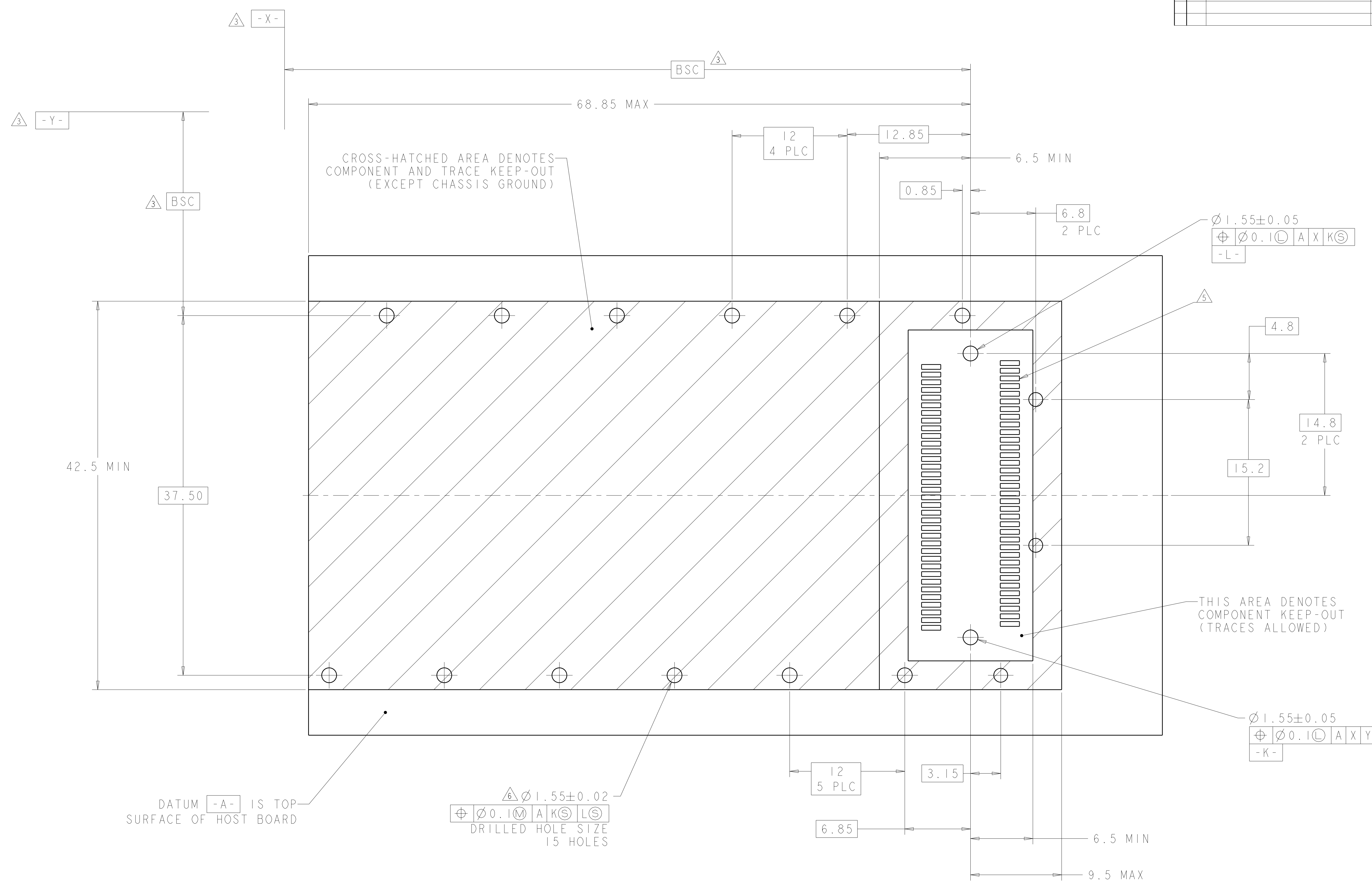
## RECOMMENDED P.C. BOARD LAYOUT FOR BELLY TO BELLY X2

DIMENSIONS:		TOLERANCES UNLESS OTHERWISE SPECIFIED:		MATERIAL:		FINISH:		MATERIAL:		FINISH:	
mm	9 PLC	±0.5	±0.2	-	-	-	-	-	-	-	-
	1 PLC	±0.2	±0.1	-	-	-	-	-	-	-	-
	2 PLC	±0.1	±0.1	-	-	-	-	-	-	-	-
	3 PLC	±0.1	±0.1	-	-	-	-	-	-	-	-
	4 PLC	±0.1	±0.1	-	-	-	-	-	-	-	-
	5 PLC	±0.1	±0.1	-	-	-	-	-	-	-	-
	6 PLC	±0.1	±0.1	-	-	-	-	-	-	-	-
	7 PLC	±0.1	±0.1	-	-	-	-	-	-	-	-
	8 PLC	±0.1	±0.1	-	-	-	-	-	-	-	-
	9 PLC	±0.1	±0.1	-	-	-	-	-	-	-	-
	10 PLC	±0.1	±0.1	-	-	-	-	-	-	-	-
	11 PLC	±0.1	±0.1	-	-	-	-	-	-	-	-
	12 PLC	±0.1	±0.1	-	-	-	-	-	-	-	-
	13 PLC	±0.1	±0.1	-	-	-	-	-	-	-	-
	14 PLC	±0.1	±0.1	-	-	-	-	-	-	-	-
	15 PLC	±0.1	±0.1	-	-	-	-	-	-	-	-
	16 PLC	±0.1	±0.1	-	-	-	-	-	-	-	-
	17 PLC	±0.1	±0.1	-	-	-	-	-	-	-	-
	18 PLC	±0.1	±0.1	-	-	-	-	-	-	-	-
	19 PLC	±0.1	±0.1	-	-	-	-	-	-	-	-
	20 PLC	±0.1	±0.1	-	-	-	-	-	-	-	-
	21 PLC	±0.1	±0.1	-	-	-	-	-	-	-	-
	22 PLC	±0.1	±0.1	-	-	-	-	-	-	-	-
	23 PLC	±0.1	±0.1	-	-	-	-	-	-	-	-
	24 PLC	±0.1	±0.1	-	-	-	-	-	-	-	-
	25 PLC	±0.1	±0.1	-	-	-	-	-	-	-	-
	26 PLC	±0.1	±0.1	-	-	-	-	-	-	-	-
	27 PLC	±0.1	±0.1	-	-	-	-	-	-	-	-
	28 PLC	±0.1	±0.1	-	-	-	-	-	-	-	-
	29 PLC	±0.1	±0.1	-	-	-	-	-	-	-	-
	30 PLC	±0.1	±0.1	-	-	-	-	-	-	-	-
	31 HOLES	±0.1	±0.1	-	-	-	-	-	-	-	-

LOC	DIST	REV	DATE	BY	APPD
AG	00				

REVISIONS		DATE	BY	APPD
1	SEE SHEET 1			



DATUM **-A-** IS TOP SURFACE OF HOST BOARD

$\Delta \varnothing 1.55 \pm 0.02$   
 $\varnothing 0.10 \text{ (M) A X K (S) L (S)}$   
 DRILLED HOLE SIZE  
 15 HOLES

## RECOMMENDED P.C. BOARD LAYOUT FOR SINGLE SIDE MOUNTED X2

<small>THIS DRAWING IS UNPUBLISHED. RELEASED FOR PUBLICATION BY TYCO ELECTRONICS CORPORATION. ALL RIGHTS RESERVED.</small>		DWN: P. KERLIN 04MAR2004 CHK: E. BRIGHT 04MAR2004 APVD: -	<b>tyco</b> Electronics Tyco Electronics Harrisburg, PA 17105-3608
DIMENSIONS: mm 	TOLERANCES UNLESS OTHERWISE SPECIFIED: 9 PLC ±0.5 1 PLC ±0.2 5 PLC ±0.1 4 PLC ± ANGLES ± FINISH -	PRODUCT SPEC APPLICATION SPEC WEIGHT CUSTOMER DRAWING	NAME: RAIL ASSY, GUIDE, X2 BELLY TO BELLY SIZE: A   00779   C=1367608 SCALE: 5:1 SHEET 3 OF 3 REV A

# Mouser Electronics

Authorized Distributor

Click to View Pricing, Inventory, Delivery & Lifecycle Information:

[TE Connectivity:](#)

[1367608-1](#)