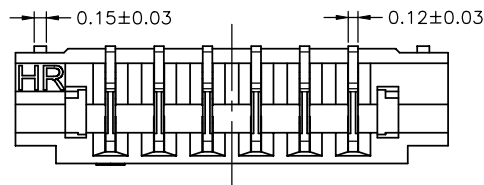
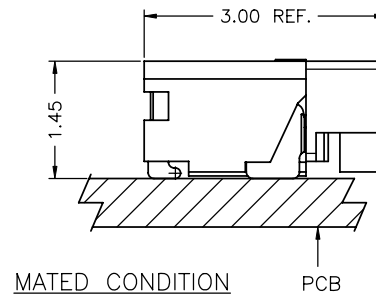
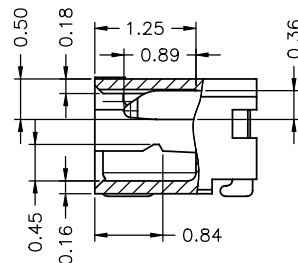
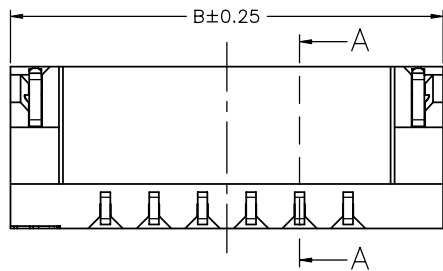
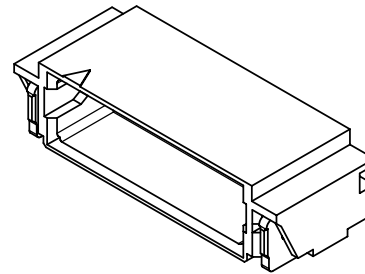
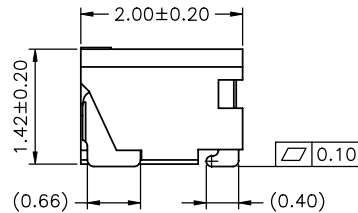
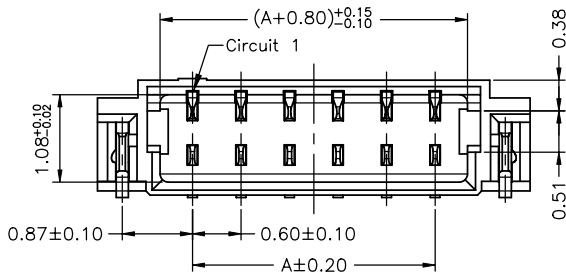
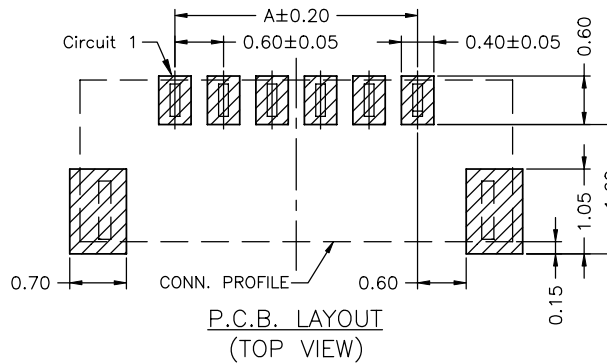


(TOP VIEW)



P/N LEGEND

A0601 WR-S-XP N L B XX X 00 R
① ② ③ ④ ⑤ ⑥ ⑦ ⑧ ⑨ ⑩ ⑪

- ① Series No.
- ② Connector type: WR=Right angle
- ③ Mounting type: S=SMT
- ④ No. of circuits
- ⑤ N=Halogen Free
- ⑥ Material: L=LCP
- ⑦ Color: B=Black
- ⑧ Plating code for contacts:
T1=Matte Tin-plated; G1=Gold-flash
- ⑨ Plating code for solder tabs:
T=Matte Tin-plated; G=Gold-flash
- ⑩ Option code: 00=Standard
- ⑪ R=Tape & Reel(Without Cap or Mylar)

SPECIFICATIONS

Current Rating: 0.2A AC,DC
Voltage Rating: 30V AC,DC
Temperature Range: -25°C ~ +85°C
Contact Resistance: 30mΩ Max.
Insulation Resistance: 100MΩ Min.
Withstanding Voltage: 200V AC/minute
Pin Material: Phosphor Bronze/Matte Tin-plated or Gold-flash
Solder Tabs: Phosphor Bronze/Matte Tin-plated or Gold-flash
Material: LCP,UL94V-0
Color: Black

Circuit No.	Dimensions	
	A	B
02P	0.60	2.95
04P	1.80	4.15
05P	2.40	4.75
06P	3.00	5.35
08P	4.20	6.55
10P	5.40	7.75
16P	9.00	11.35
20P	11.40	13.75
22P	12.60	14.95



燦達電子工業股份有限公司
JOINT TECH ELECTRONIC IND. CO., LTD.

UNIT: mm SCALE: 1:1 SHEET: 1 of 2

DRAWN BY: 陳敏 2012.05.02
APPROVED BY: 董正一 2012.05.02

GENERAL TOLERANCE

X. X±0.25 ANGLE±
X. XX±0.15
X. XXX±0.05

TITLE:
**0.60mm PITCH
90° WAFER-SMT TYPE**
DRAW NO.: A0601WR-S-XPXXXXXXX REV. A0

REV.	DESCRIPTION	DATE	NAME
A0	NEW RELEASE	2012.05.02	陳敏