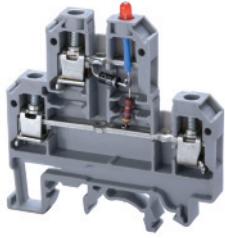


CDL4U(E)LD4*

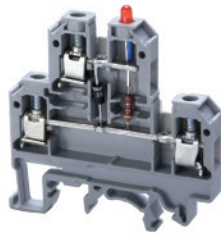


AC/ DC voltage indicator with LED

6 mm		
54 x 55.5 mm		
24V~, 48 V~		
9 mm		
Polyamide 6.6		
22-10 AWG	0.2-4 sq.mm	22-10 AWG
300 V	500 V	600 V
25 A	32 A	35 A
7 lb-in	0.5 Nm	7 lb-in



CDL4U(E)LD1/LD2

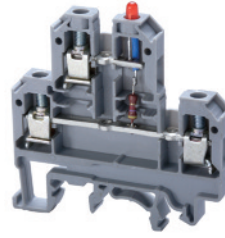


DC voltage indicator with LED

6 mm		
54 x 55.5 mm		
24 V-		
9 mm		
Polyamide 6.6		
22-10 AWG	0.2-4 sq.mm	22-10 AWG
300 V	500 V	600 V
25 A	32 A	35 A
7 lb-in	0.5 Nm	7 lb-in



CDL4U(E)L1/L2*



DC voltage indicator with LED

6 mm		
54 x 55.5 mm		
6 V-, 24 V-, 60 V-		
9 mm		
Polyamide 6.6		
22-10 AWG	0.2-4 sq.mm	22-10 AWG
300 V	500 V	600 V
25 A	32 A	35 A
7 lb-in	0.5 Nm	7 lb-in



CDL4U(O)

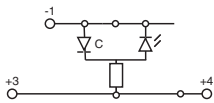


Electronic Component Carrier

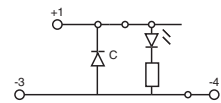
6 mm		
54 x 55.5 mm		
9 mm		
Polyamide 6.6		
22-10 AWG	0.2-4 sq.mm	22-10 AWG
300 V	500 V	600 V
25 A	32 A	35 A
7 lb-in	0.5 Nm	7 lb-in



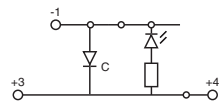
Cat. No.	Std. Pk.
CDL4U(E)LD4*	50
EPCDL4U	50
CA702	50
CA802	50
CA727/2	100
CA727/3	100
CA727/4	100
CA727/10	10
CA703/1	100
CA704/1	100
CA705/1	100
CA732/10	100
CA732/10-A	100
CA732/100	10
CA607/S/Q	100
MT2	100



Cat. No.	Std. Pk.
CDL4U(E)LD1	50
CDL4U(E)LD2	50
EPCDL4U	50
CA702	50
CA802	50
CA727/2	100
CA727/3	100
CA727/4	100
CA727/10	10
CA703/1	100
CA704/1	100
CA705/1	100
CA732/10	100
CA732/10-A	100
CA732/100	10
CA607/S/Q	100
MT2	100

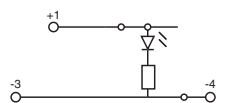


LD1

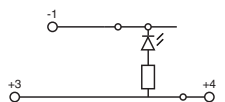


LD2

Cat. No.	Std. Pk.
CDL4U(E)L1*	50
CDL4U(E)L2*	50
EPCDL4U	50
CA702	50
CA802	50
CA727/2	100
CA727/3	100
CA727/4	100
CA727/10	10
CA703/1	100
CA704/1	100
CA705/1	100
CA732/10	100
CA732/10-A	100
CA732/100	10
CA607/S/Q	100
MT2	100

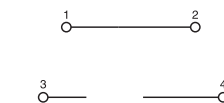


L1



L2

Cat. No.	Std. Pk.
CDL4U(O)	100
EPCDL4U	50
CA702	50
CA802	50
CA727/2	100
CA727/3	100
CA727/4	100
CA727/10	10
CA703/1	100
CA704/1	100
CA705/1	100
CA732/10	100
CA732/10-A	100
CA732/100	10
CA607/S/Q	100
MT2	100



* Add required voltage to part number as a suffix i.e. CDL4U(E)LD5/110 is for 110V.

Mouser Electronics

Authorized Distributor

Click to View Pricing, Inventory, Delivery & Lifecycle Information:

[Altech:](#)

[CDL4U\(E\)L1](#) [CDL4U\(E\)L2](#) [CDL4U\(O\)](#) [CDL4U\(E\)LD1](#) [CDL4U\(E\)LD2](#)